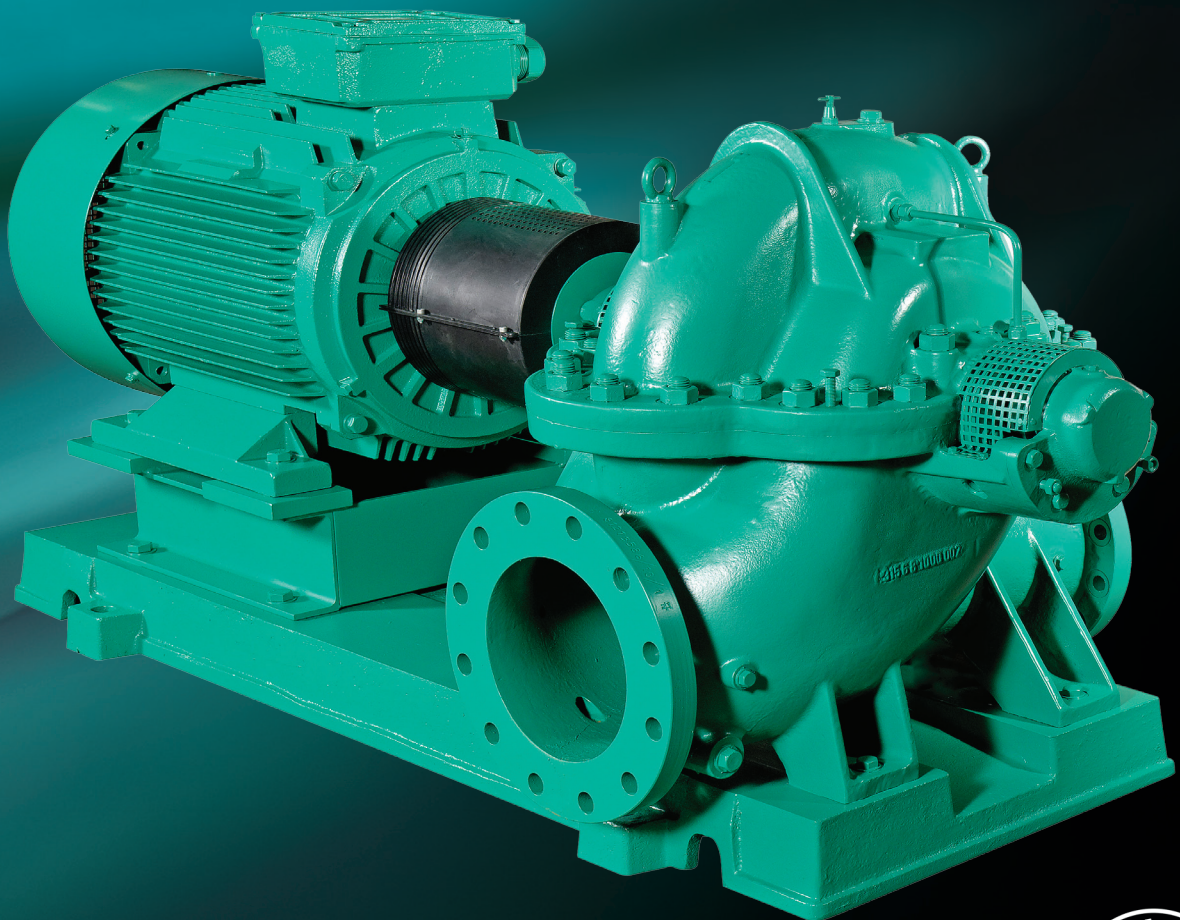


Wilo SCP
Horizontal Split Case Pumps

Product Brochure

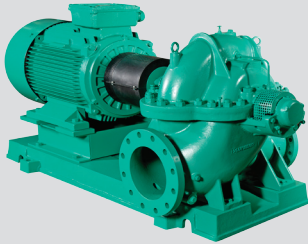


Wilo SCP

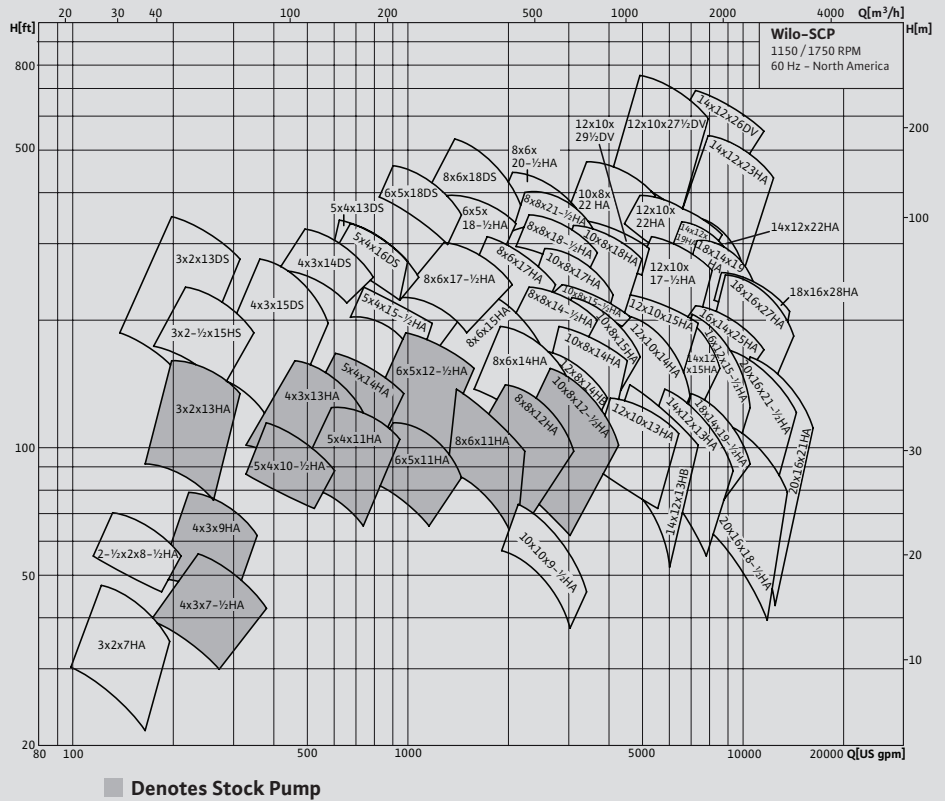
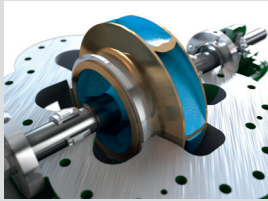
Horizontal Split Case Pumps

- Applications Include:
- » Heating and Cooling Systems
 - » Transfer and Pressure Boosting
 - » Boiler Feed/Condensate
 - » Municipal Water Supply
 - » Irrigation
 - » Industrial Applications

Wilo SCP



63 Models!
Up to 2,000 HP!



- » Horizontally split casing allows replacement of bearings and mechanical seal without disturbing the system piping
- » Regreaseable double row bearing on non-drive end
- » Double suction design available for maximum efficiencies
- » Internal flush system for extended seal life
- » 9 different material specs available
- » Available in sizes up to 2,000HP
- » 8 different seal types available
- » Heads up to 750 feet
- » Hydraulically balanced double-suction impeller for minimal axial thrust
- » Flows up to 17,000 USGPM
- » Tongue & groove neck ring design eliminates seizing of rotating assembly
- » Temperature range of 18°F to 250°F (-8°C to 120°C)

WILO USA LLC

Toll-Free: 866-945-6872
Web: www.wilo-usa.com
Email: info@wilo-usa.com

WILO Canada Inc.

Toll-Free: 866-945-6236
Web: www.wilo-canada.com
Email: info@wilo-canada.com

