



THE RIGHT PUMP FOR  
TOUGH JOBS

# SK/SKX SHREDDER PUMPS



In the deep,  
below the  
surface, a pump  
EATS EVERYTHING...

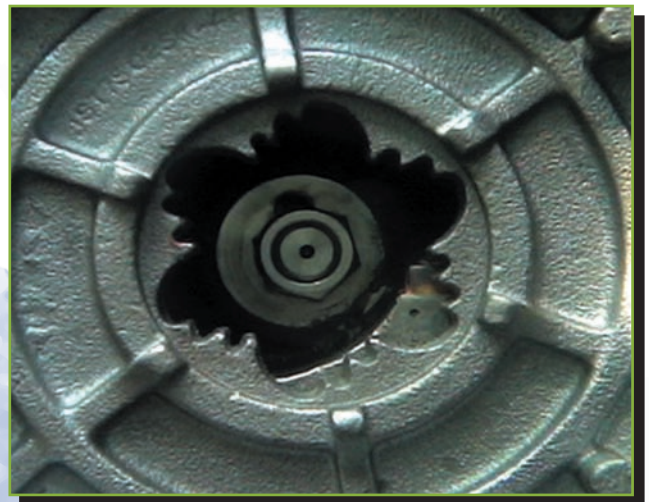


# BJM SUBMERSIBLE SHREDDER PUMPS



# BJM Shredder Pumps are designed and built to “EAT”, destroying solids by tearing, breaking and ripping them to pieces.

- A “mouth” of hardened teeth on the pump suction plate traps solids.
- A BJM Fang™ impeller with hard sharpened tungsten carbide “tooth” on the leading edge of the open vane non-clog impeller shreds the solids against the suction plate “teeth”.



The BJM Shredder Pump is more than a chopper or cutter pump that cuts solids between the edge of an impeller and a cutter bar like an axe. BJM's Shredder Pump **CONTINUOUSLY** rips solids apart with 360 degree shredding action.

This makes the BJM Shredder Pump capable of “eating” almost any solid.

## BJM Shredder Pumps “eat” raw sewage and ...

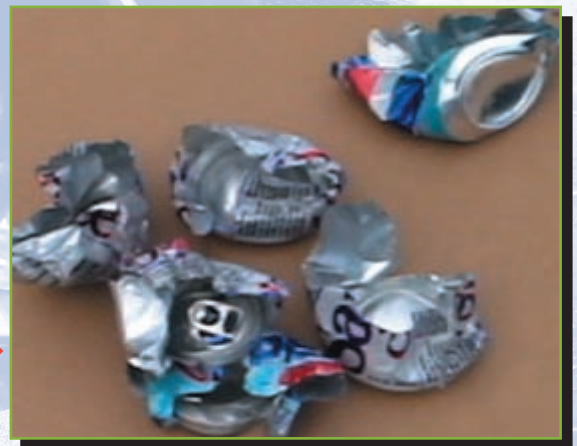


### Plastics

- beverage containers
- ← children's toys
- tampon applicators
- eating utensils
- condoms

### Metals

- beer cans
- soda cans →
- bottle caps
- wire



### Food Wastes

- fish, meats, poultry
- whole fruits
- ← vegetables

### Fibrous Solids

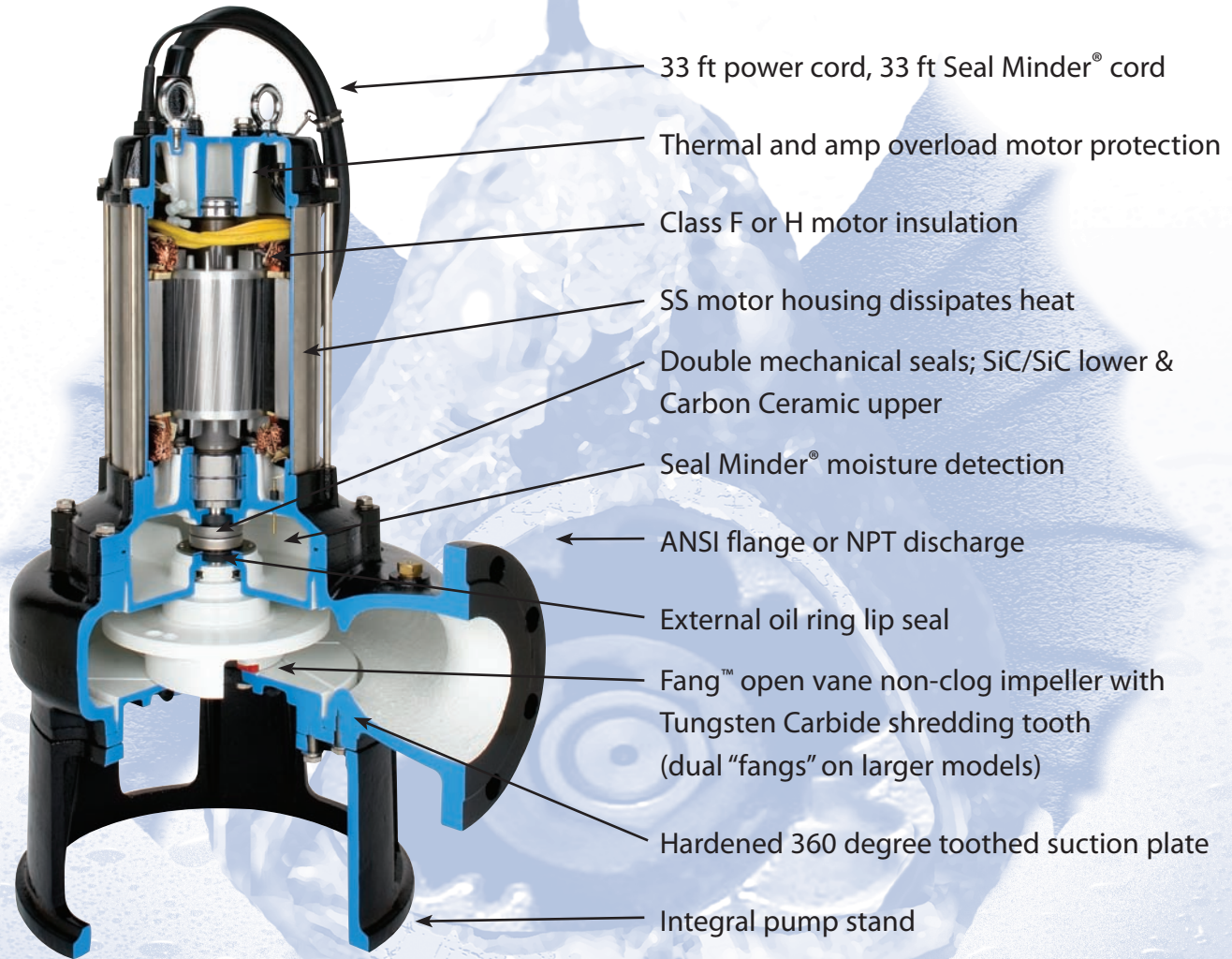
- diapers
- sanitary pads
- gloves →
- elastic undergarments
- towels





# The unique construction and solids handling of the BJM Shredder Pump makes it the choice for wastewater and industrial applications.

## Standard features on all SK and SKX Shredder Pumps



## A CHOICE of CONSTRUCTION

SK SHREDDER PUMPS: CAST IRON and 304 Stainless Steel for NON-CORROSIVE APPLICATIONS.

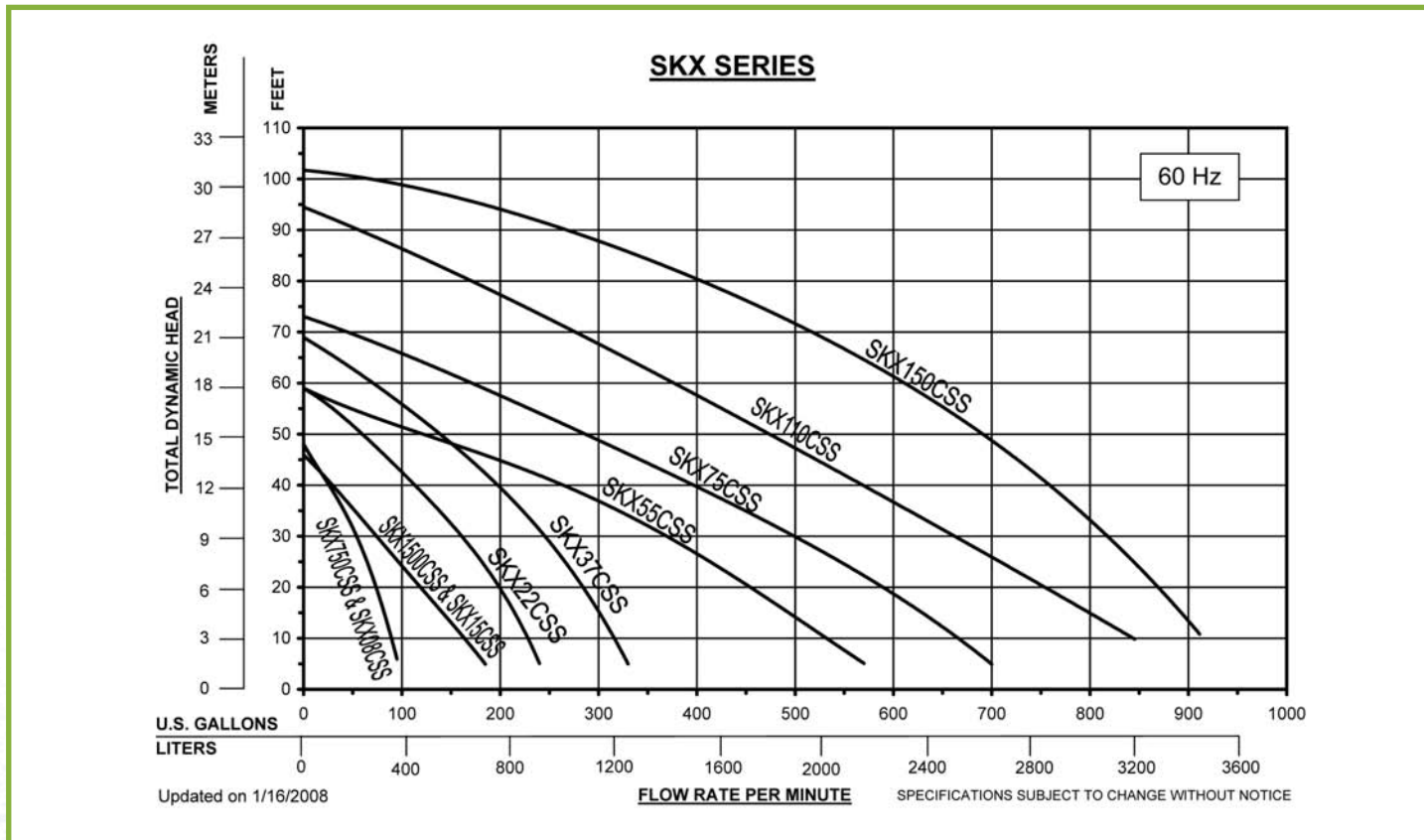
- Schools
- Sports centers
- Shopping malls
- Airports
- Bus stations
- Trailer parks
- Amusement parks
- Dairies
- Feed lots
- Bottling plants
- Camp grounds
- Industrial Parks

SKX SHREDDER PUMPS: ALL 316 Stainless Steel and Viton® for CORROSIVE LIQUIDS OR APPLICATIONS WHERE CAST IRON OXIDATION CONTAMINATES THE PUMPED LIQUID.

- Aquariums
- Aquatic Parks
- Research centers
- Hospitals
- Food packaging
- Meat processors
- Spill containment
- Wash down

High Temperature Shredder also available for up to 200deg F. See BJM's Fahrenheit Series.





**Note:** When selecting a shredder; shredding capability increases with higher motor torque. Size the pump to apply as much motor HP as possible.

MODEL	DISCH. SIZE	H.P.	VOLT	PHASE	RPM	RATED AMPS	MAX SOLIDS	MAX HEAD	MAX GPM	WEIGHT LBS	HEIGHT	WIDTH	CABLE
SKX750C	2"	1	115/230	1	3450	14/7	2"	48'	95	75	21.25"	13.5"	33'
SK1500C/SKX1500C	3"	2	230	1	3450	14	2.5"	46'	185	104	21.5"	13.5"	33'
SK08C/SKX08C	2"	1	230/460	3	3450	3/1.5	2"	48'	95	69	21.25"	13.5"	33'
SK15C/SKX15C	3"	2	230/460	3	3450	6/3	2.5"	46'	185	95	20.5"	13.5"	33'
SK22C/SKX22C	3"	3	230/460	3	3450	9/4.5	2.5"	59'	240	125	21.8"	15.3"	33'
SK37C/SKX37C	3" or 4"	5	230/460	3	1750	14/7	3"	69'	330	136	22.5"	15.3"	33'
SK55C/SKX55C	4"	7.5	230/460	3	1750	21/10.5	3.5"	59'	570	398	30"	29.5"	33'
SK75C/SKX75C	4"	10	230/460	3	1750	30/15	3.5"	73'	700	414	31.2"	29.5"	33'
SK110C/SKX110C	6"	15	230/460	3	1750	39.6/19.8	3.5"	94'	845	610	35.6"	35.2"	33'
SK150C/SKX150C	6"	20	460	3	1750	25.7	3.5"	101'	911	630	37.6"	35.2"	33'

## SHREDDER PUMP SLIDE RAIL ASSEMBLIES

CI MODEL	SS MODEL	SIZE	PUMP SIZES
SR50-1	SRX50SS-1	2"	08C
SR80-ANSI	SRX80SS-ANSI	3"	1500C, 15C, 22C, 37C
SR100-ANSI	SRX100SS-ANSI	4"	*1500C, *15C, *22C, *37C, 55C, 75C
SR150-ANSI	SRX150SS-ANSI	6"	*55C, *75C, 110C, 150C

**\*Note:** Some pumps will need an adapter to fit rails larger than their rated discharge size.

SPECIFICATIONS SUBJECT TO CHANGE WITHOUT NOTICE.

<p>123 Spencer Plain Road P.O. Box 1138 Old Saybrook, CT 06475</p> <p>Tel: (860)-399-5937 Toll Free: (877)-BJM-PUMP Fax: (860)-399-7784 Web: <a href="http://www.bjmpumps.com">www.bjmpumps.com</a></p>	<p>Distributor:</p>
---	---------------------