

GUIDE RAIL SYSTEMS

Effluent and Sewage

FEATURES

A10-30, 3" X 4" RAIL SYSTEM:

Connects to any pump with a 3", 150# ANSI flanged discharge. Outlet is a 4" flanged discharge.

A10-40, 4" X 4" RAIL SYSTEM:

Connects to any pump with a 4", 150# ANSI flanged discharge. Outlet is a 4" flanged discharge.

A10-60, 4" X 6" RAIL SYSTEM:

Connects to any pump with a 4", 150# ANSI flanged discharge. Outlet is a 6" flanged discharge.

ALL MODELS:

Cast iron construction for standard applications.

Optional bronze pump adapter for applications requiring a non-sparking disconnect.

Standard kit contains a Base, a Pump Adapter with all required bolts and fittings and the Upper Guide Rail Positioning Bracket.

Optional intermediate guide rail brackets are available in either steel or brass for non-sparking applications.

Guide rails are not supplied - they may be sourced locally - 2" stainless steel guide rails recommended.

Spare pump adapter kits are available for those who want a back-up pump/adapter ready for an emergency quick change.



Wastewater

3" AND 4" DISCHARGE GUIDE RAIL SYSTEM

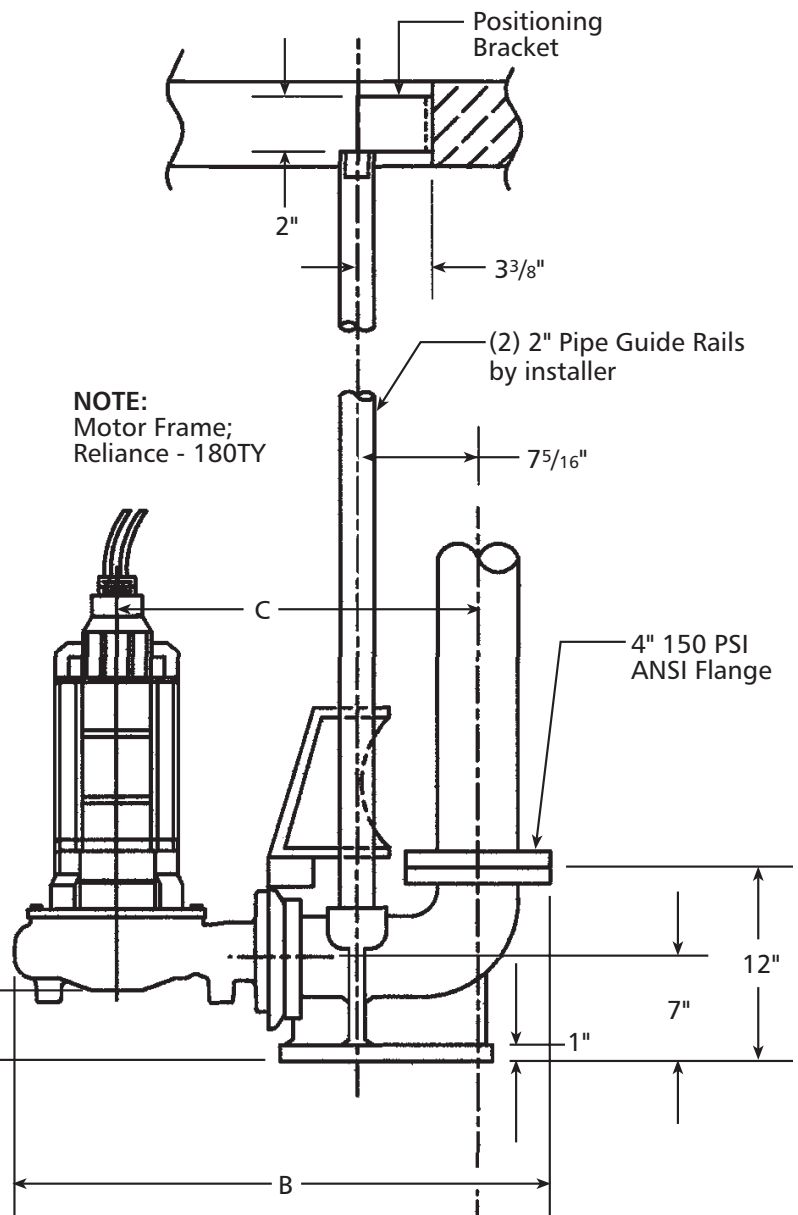
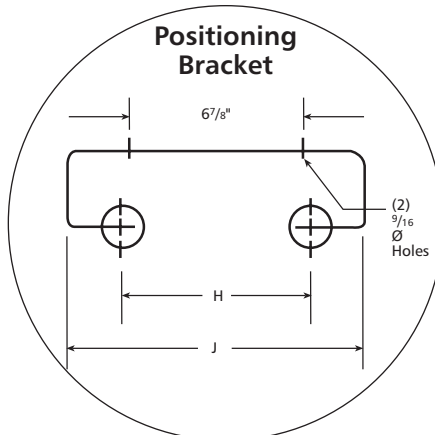
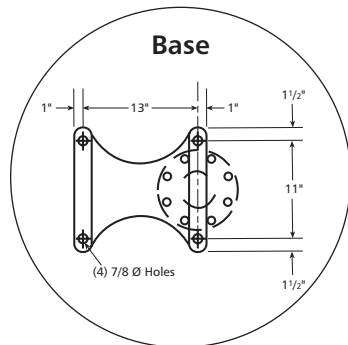
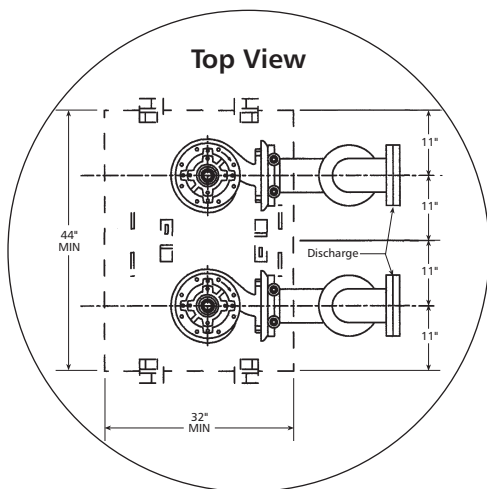
- Heavy duty cast iron construction.
- Twin guide rails provide positive alignment with base.
- No sealing devices required – pump weight provides sufficient force for proper seal.
- Self cleaning design. When pump flange engages base, the shearing action wipes the sealing surfaces clean.

System Components Include:

- Base with integral cast elbow.
- Pump adapter – guide assembly with fasteners.
- Upper guide rail positioning bracket. Carbon steel bracket available as an option in stainless steel.

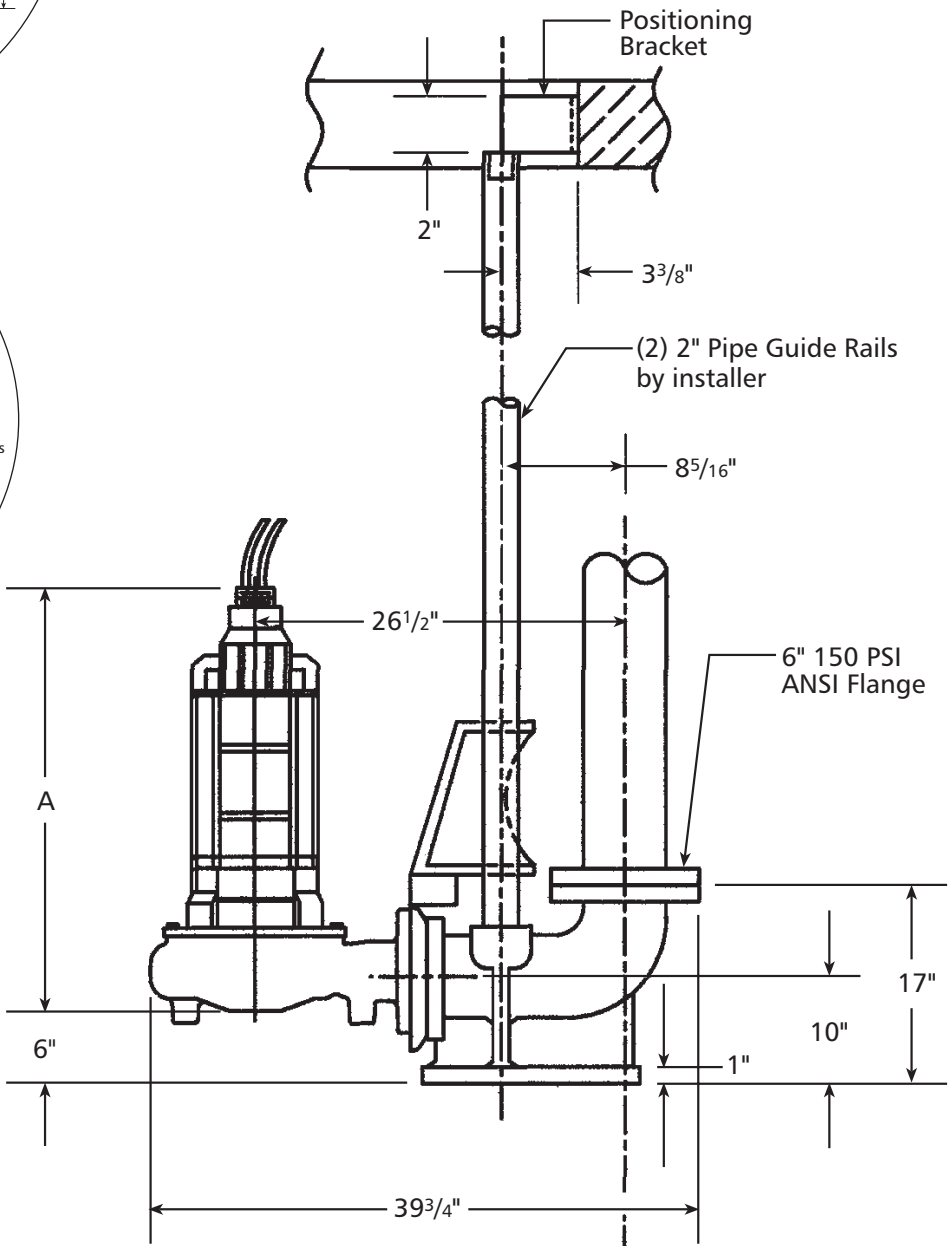
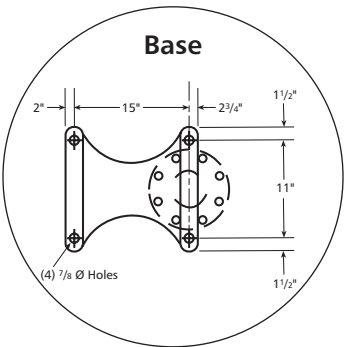
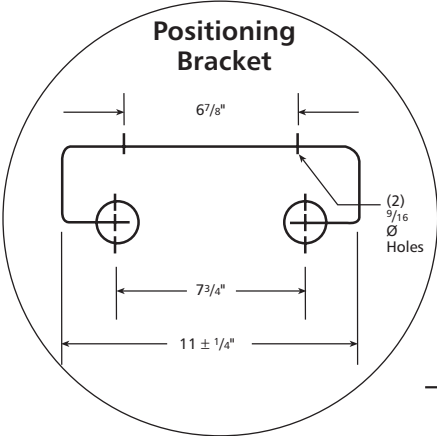
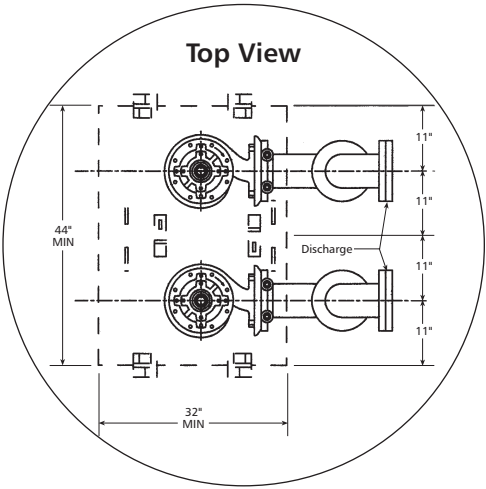
NOTE: Guide rails not furnished by CentriPro. Lifting chains and bails ordered separately. Intermediate bracket available as seen on page 4 for pits over 11 feet.

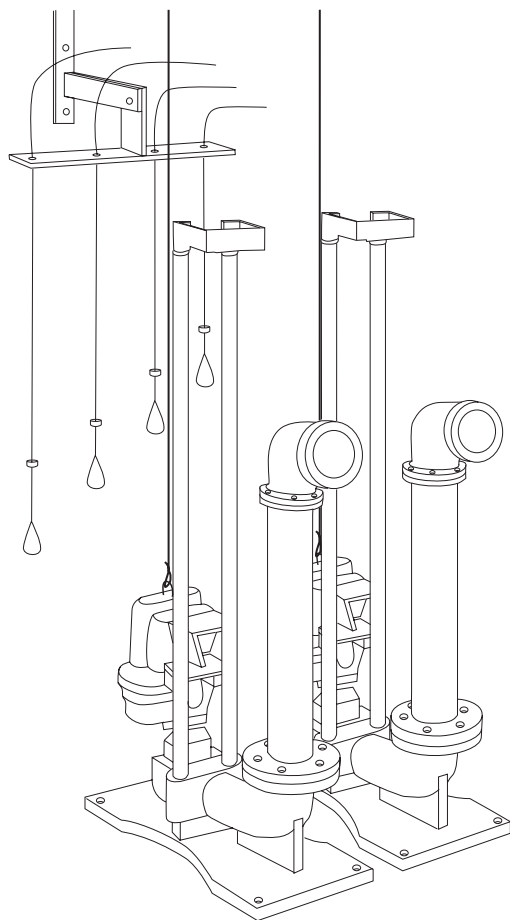
Pump Discharge	Part Number	A	B Max.	C	H	J	Weight
3"	A10-30	4 ⁹ / ₁₆	33 ³ / ₈	22 ¹ / ₂	6 ³ / ₄	11 ± 1/4	170 lbs.
4"	A10-40	3 ¹³ / ₁₆	34 ¹ / ₄	23	7 ³ / ₄	12 ± 1/4	185 lbs.



4" DISCHARGE GUIDE RAIL SYSTEM

Frame	Pump Discharge	Part Number	A	Weight
210	4"	A10-60	37 ³ / ₄	185 lbs.
250	4"	A10-60	43 ¹ / ₈	185 lbs.





PUMP ADAPTER KITS

1K340 – for A10-30 iron
 1K341 – for A10-40 / A10-60 iron
 1K447 – for A10-30B brass
 1K448 – for A10-40B / A10-60B brass

Part numbers are for repairs, component is included in the A10-30, 40 accessory.

INTERMEDIATE GUIDE RAIL BRACKET

A10-30 (B) standard	4K436
A10-40 (B), 60 (B) standard	4K437
A10-30 304 SS	4K631
A10-40 304 SS	4K632

*Used on pits over 11 feet for extra support.
 Must be purchased separately.*

MINIMUM BASIN DIAMETER

	Minimum	Recommended
Simplex	36"	42"
Duplex	48"	60"

Pump Discharge Size	Order Number	ANSI Flanged Discharge Size	Material of Positioning Bracket	Used On These Pumps
3"	A10-30	4" 150 lb. ANSI	Carbon Steel	3WDA, 3DWS, 3WS, 3888D3, 3SD 3GV, 3MV, 3MK
3"	A10-30SS		Stainless Steel	
4"	A10-40		Carbon Steel	
4"	A10-40SS		Stainless Steel	
4"	A10-40SS	6" 150 lb. ANSI	Carbon Steel	4WDA, 4DWS, 4DWN, 4WS, 3888D4, 4SD, 4NS 4GV, 4MV, 4MK
4"	A10-60SS			
3" XP	A10-30B			
4" XP	A10-40B			
4" XP	A10-60B	6" 150 lb. ANSI		3XWC, 3SDX, 3GVX, 3MVX, 3MKX 4XWC, 4XWN, 4SDX, 4GVX, 4MVX, 4MKX 4XWC, 4XWN, 4XD, 4SDX, 4GVX, 4MVX, 4MKX

* For 6MK units, see Conery base elbow CBE6060.