

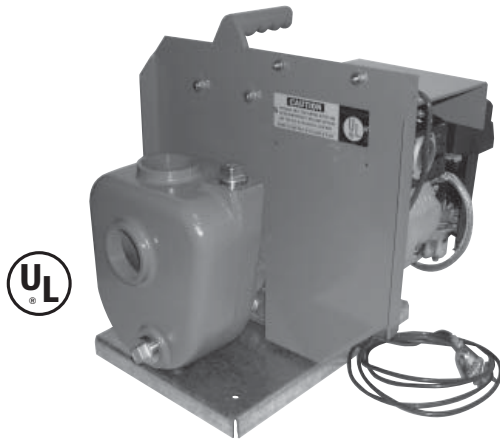
ITT

Commercial Water

Goulds Pumps

2AM32-P

Gasoline Engine Driven Self-Priming
Petroleum Pump



FEATURES

- Convenient carrying handle or chassis mounting provides maximum portability.
- Shielded ignition and spark plug minimize the potential for stray electrical sparks.
- Convenient ON/OFF control switch.
- Dual element air cleaner large capacity, semi-dry.
- Advance technology OHC Subaru EX series engine. Quiet, efficient, easy starting and reliable.
- Low emissions, meets: EPA Phase II and Carb Tier II regulations.
- Spark-arresting muffler reduces the possibility of sparks due to carbon particles in the exhaust.
- Anti-sparking aluminum impeller lessens the chances for internal sparks.
- Stainless steel seal with Viton elastomers helps assure long life and effective sealing.
- Grounding cable reduces possibility of static electricity build-up.
- Rugged cast iron or ductile iron construction helps assure long life.
- Optional 2 wheel hand cart with pneumatic tires.



Goulds Pumps is a brand of ITT Corporation.

www.goulds.com

Engineered for life



ITT

GOULDS PUMPS Commercial Water

TYPICAL APPLICATIONS

- Transfer Services
- Petroleum Handling
- Fueling Systems
- Tank Car Loading/Unloading
- Bulk Plant Services
- Sump Services
- Water Circulation

APPLICATION

This pump is designed to pump petroleum products such as diesel fuel, jet fuel or gasoline in well-ventilated areas where the lack of electricity makes it impossible to use pumps driven by explosion-proof electric motors.

PUMP SPECIFICATIONS

- Size: 2" (50.8 mm) NPT Suction and discharge connections
- Flows to: 140 GPM (cu. m/hr.)
- Heads to: 90 feet (76 m)
- Weight: 67 lbs.

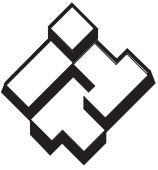
MODEL 2AM32-P — 4.5 HP						
CAPACITIES IN U.S. GALLONS PER MINUTE CONTINUOUS SERVICE (Governed Throttle)						
Total Head (INCLUDING FRICTION)		Total-Static-Suction Lift in feet				
FEET	PSI	5'	10'	15'	20'	25'
20	8.6	127	107	—	—	—
25	10.8	127	107	91	—	—
30	13.0	125	107	91	74	—
35	15.2	117	107	91	74	50
40	17.3	111	106	90	74	50
50	21.6	95	95	90	74	50
60	26.0	78	78	78	73	50
70	30.3	58	58	58	58	50
75	32.5	50	50	50	50	50



WARNING: This pump is designed for petroleum products in a non-combustible, well ventilated area. To reduce the risk of fire or explosion, do not operate near open flames, sparks or any other ignition source. Do not operate the unit in an explosive atmosphere or unventilated area. Always connect the grounding wire to the nearest grounding point on the tank to be filled. Shut off and allow the engine to cool before refueling.



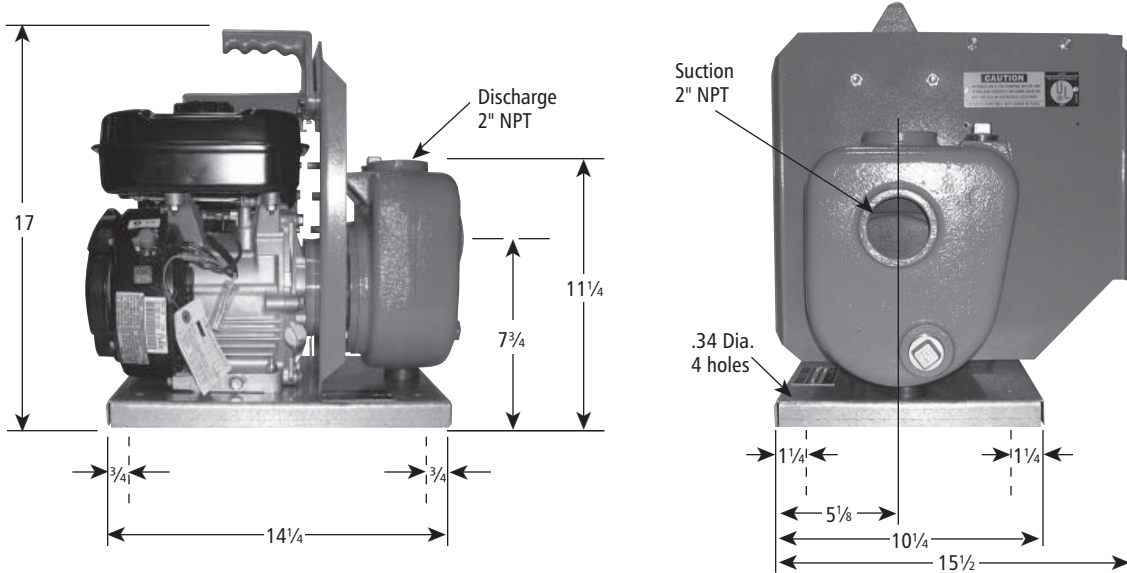
Shown with optional chassis.



ITT

GOULDS PUMPS Commercial Water

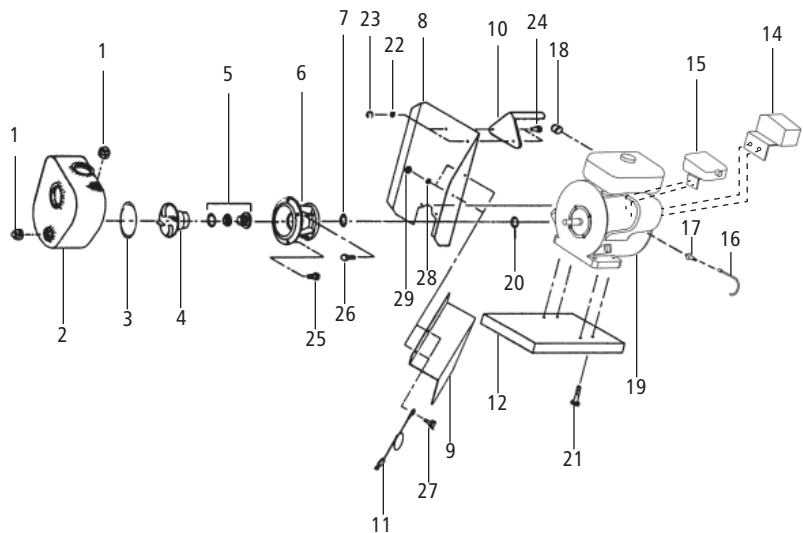
DIMENSIONS AND WEIGHTS



All dimensions are in inches. For reference only.

COMPONENTS LIST

Item No.	Part Description
1	Pipe Plug
2	Casing
3	Gasket - O-ring
4	Impeller - Open
5	Seal Assembly
6	Bracket
7	Slinger
8	Splash Deflector
9	Muffler Guard
10	Handle
11	Ground Cable
12	Base
14	Air Cleaner
15	Spark Arresting Muffler
16	Shield - Spark Plug Wire
17	Spark Plug
18	Rotary Ignition Switch
19	Engine Assembly (includes engine, plus items 14-18)
20	Gasket - O-ring
21	Capscrew
24	Capscrew
25	Capscrew
26	Capscrew
27	Capscrew
28	Lockwasher
29	Nut





ITT

Commercial Water



Goulds Pumps and the ITT Engineered Blocks Symbol are registered trademarks and tradenames of ITT Corporation.

SPECIFICATIONS ARE SUBJECT TO CHANGE WITHOUT NOTICE.

2AM32P May, 2007
© 2007 ITT Corporation

Engineered for life