

# SUBMERSIBLE SOLIDS HANDLING PUMPS

Models H4H, H4HX, H3H, H3HX, H4Q, H4QX

---



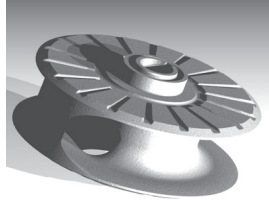
 **HYDROMATIC®**

# Submersible Solids Handling Pumps

## H SERIES – NO CLOG, NO LOSS

### Dependable HYDROMATIC® submersible solids handling pumps

In our continuing tradition of excellence, Hydromatic has developed the H Series line of No Clog-No Loss submersible pumps. The enhanced performance of the H Series pumps is made possible by employing an improved mono-vane impeller geometry. This superior geometry helps to eliminate clogs while not affecting performance. H Series pumps yield steeper, non-overloading performance and improved efficiencies.

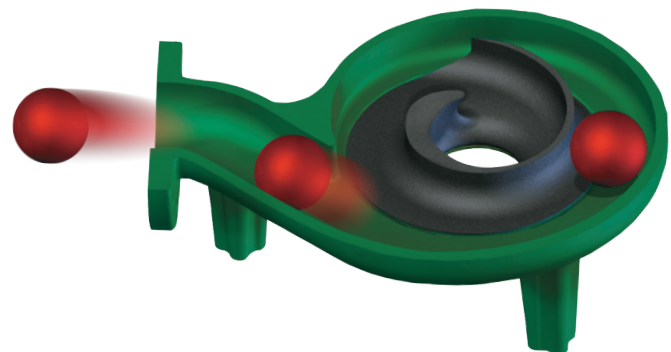


Hydromatic is one of the oldest manufacturers of submersible pumps in the world. Years of engineering improvements, real world field applications, and experience have solidified Hydromatic as the premier brand on the market today. Dependable Hydromatic pumps provide years of reliable service.

Complete technical support and ongoing engineering assistance plus an available 5-year warranty ensures peace of mind for users of Hydromatic pumps.



### Can your pump pass this?

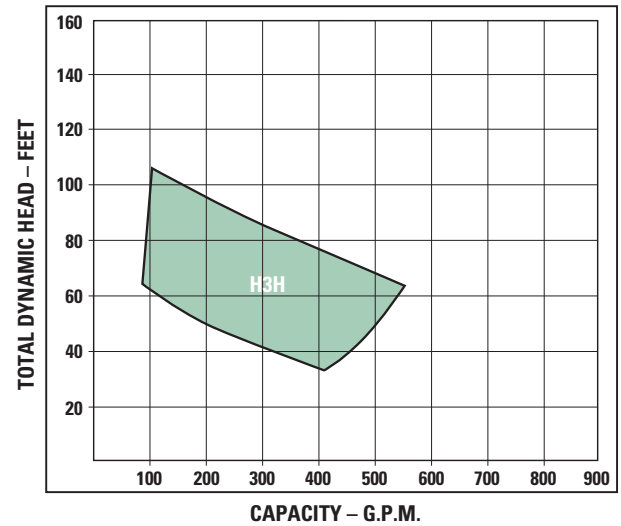


H Series pumps pass a full 3" diameter nondeformable spherical solid per the Ten States Standards

# Submersible Solids Handling Pumps

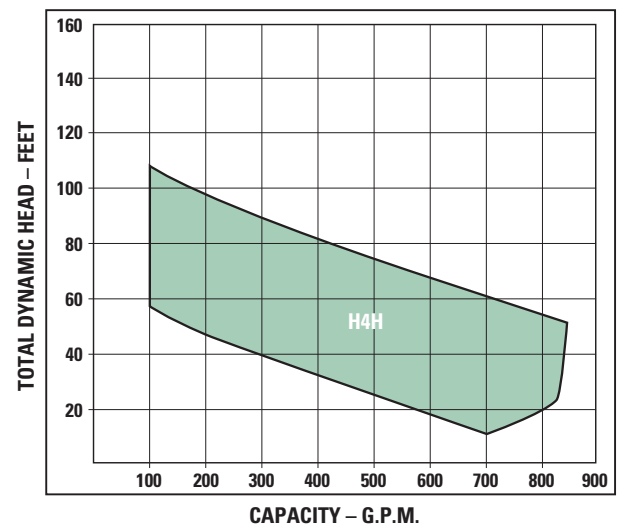
## H3H, H3HX

- 3" discharge
- Passes a full 3" diameter nondeformable spherical solid per the Ten States Standards
- Performance
  - Steep non-overloading curve
  - Flows to 575 GPM, heads to 105 ft.
  - Highly efficient
- Design that will not clog
  - Streamlined impeller vane at inlet
  - Smooth flow path
- Can easily be converted to an H4H pump to meet future lift station demands



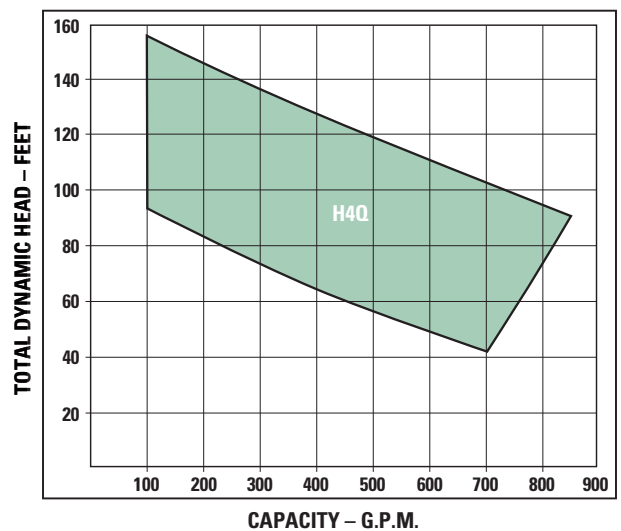
## H4H, H4HX

- 4" discharge
- Passes a full 3" diameter nondeformable spherical solid per the Ten States Standards
- Performance
  - Steep non-overloading curve
  - Flows to 850 GPM, heads to 105 ft.
  - Highly efficient
- Design that will not clog
  - Streamlined impeller vane at inlet
  - Smooth flow path
- H4H wet end can be retrofitted to Hydromatic S4P motor end



## H4Q, H4QX

- 4" discharge
- Passes a full 3" diameter nondeformable spherical solid per the Ten States Standards
- Performance
  - Steep non-overloading curve
  - Flows to 800 GPM, heads to 145 ft.
  - Highly efficient
- Design that will not clog
  - Streamlined impeller vane at inlet
  - Smooth flow path
- Integrated pump-out vanes
  - Keeps seal area clear of debris
  - Balances pressure distribution
  - Provides material for integrated balancing



# Submersible Solids Handling Pumps



**Pentair  
Water™**

USA

740 East 9th Street, Ashland, Ohio 44805  
Tel: 419-289-3042 Fax: 419-281-4087

[www.hydomatic.com](http://www.hydomatic.com)

- Your Authorized Local Distributor -

CANADA

269 Trillium Drive, Kitchener, Ontario, Canada N2G 4W5  
Tel: 519-896-2163 Fax: 519-896-6337