



cast iron submersible high temperature effluent pump



The HT7 Series Pump is a rugged, submersible cast iron pump with a non-clog, semi-open impeller. It has solids handling capability to 3/4" and is designed to handle liquids to 200°F (93°C). Unit has a 1/2 HP single phase motor complete with power cord. 2" NPT vertical discharge is standard.

APPLICATIONS

- Boiler Blow Down Pits
- Condensate Pits
- Hot Water Sumps

ORDERING INFORMATION

Catalog Number	HP	Max. Load Amps	Volts	Phase/Cycles	Automatic	Cord Length	Switch Type	Mechanical Switch Setting	
								On	Off
HT750120T	1/2	12.0	115	1/60	*	20'	Tethered	17.8"	8.8"
PW217-280	HT7 Control Box with High Temp Float Switch								

***Control box is necessary for the HT7, and is not included with the pump. You must order it separately.**

In order to provide the best products possible, specifications are subject to change.

HT7 SERIES

SPECIFICATIONS

Volute Casing – Cast iron

Upper and Lower Motor Housing – Cast iron

Impeller – Cast iron

Mechanical Seal – Type 6A or equal, Buna-N elastomers, silicon carbide sealing faces, stainless steel metal parts

Bearings – Ball type, oil lubricated

Exterior Hardware and Nameplate – Stainless steel

Motor – 1/2 HP, 3450 RPM, 115 Volt single phase, 60 Hz. Class F insulation. Oil-filled. Built-in thermal overload protection with automatic reset. Stainless steel motor shaft and impeller lock nut.

Power Cord – 20' UL Listed, oil and water resistant 16-4 SOOW-A/SOOW with stainless steel cord connector

Maximum Liquid Temperature Limits – 200°F (93°C)

FEATURES

Solids Handling – 3/4" spherical capabilities.

Construction – Cast iron motor housing, volute and impeller with stainless steel hardware for long life.

Bearings and Mechanical Seal – Permanently lubricated for long life.

Impeller – Non-clog vortex style, ejector vanes for seal protection.

Overload Protection – Built in thermal overload with automatic reset.

Serviceability – Heavy-duty lift out ring for field service.

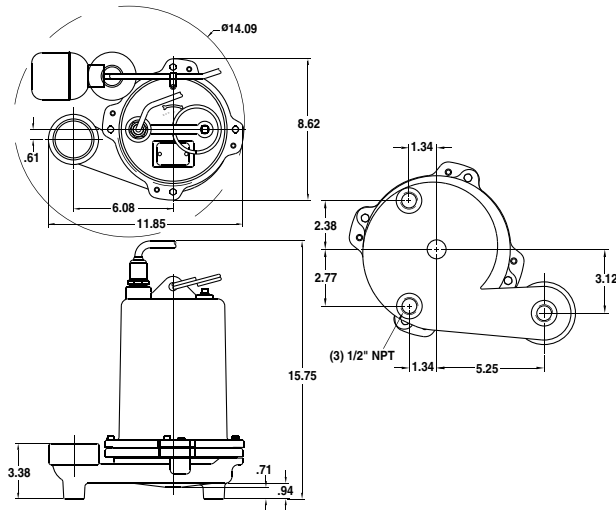
Stainless Steel Hardware – Allows for easy disassembly after extended service.

Cord Design – Prevents oil loss from and moisture protection for motor.

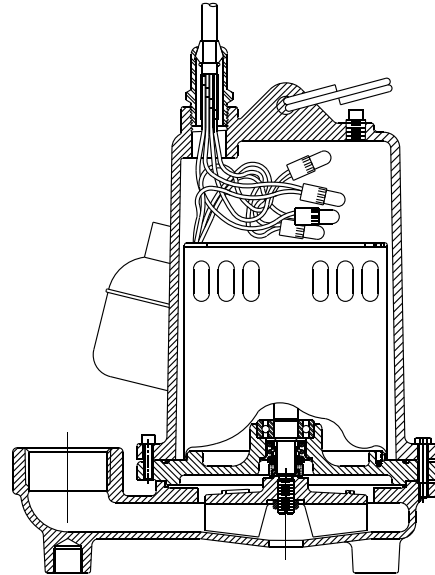
Height Adjustment – Legs are drilled and tapped with 1/2" NPT threads to allow pump height to be adjusted.

cast iron submersible high temperature effluent pump

OUTLINE DIMENSIONS



SECTIONAL VIEW



PUMP PERFORMANCE

