
QTI PACKAGE SYSTEM



Features

2 HP "Magnum" Sewage Grinder Pump

Check-Valve

Control Panel

Pre-set Control Float Switches

Stainless Steel Float Bracket

Junction Box

Basin and Cover

Basins are available in either structurally reinforced super tough polyethylene or heavy-duty fiberglass material. Simplex basins are 24" diameter, and are available in 60" and 72" depths.

4" Adapt-a-Flex Inlet

EZ-Out Rail System with sealing flange, discharge pipe disconnect, stainless steel guide rails, lifting chain, ball check valve and ball valve. Ball valve is on poly versions. The fiberglass versions have a gate valve.

Easy-to-follow installation instructions

The QTI Package System is a complete Residential Sewage Grinder System that comes ready to be installed. The QTI Package Systems are pre-assembled with E-Z out rail system, pre-set control floats, all stainless steel hardware for corrosion resistance, junction box, ball check valve, and ball valve (gate valve on Fiberglass models). This package system was designed by engineers and installers to save time and money on installation and service.

Little Giant Pump Co.

QTI PACKAGE SYSTEM

QTI Residential Sewage Grinder Package System w/Fiberglass Basins

20G-SMPX-K

Features the 20G-CIM and MGP Control Panel

ITEM NO.	PUMP VOLTAGE	BASIN SIZE (DIAMETER & DEPTH)	DESCRIPTION
520800	208V	24" x 60"	BS2460FG
520804	230V	24" x 60"	BS2460FG
520805	230V	24" x 72"	BS2472FG
520801	208V	24" x 72"	BS2472FG

20GH-SMPX-K

Features the 20GH-CIM and MGP Control Panel

ITEM NO.	PUMP VOLTAGE	BASIN SIZE (DIAMETER & DEPTH)	DESCRIPTION
520812	230V	24" x 60"	BS2460FG
520808	208V	24" x 60"	BS2460FG
520813	230V	24" x 72"	BS2472FG
520809	208V	24" x 72"	BS2472FG

QTI Residential Grinder Package System w/Polyethylene Basin

20G-SMPX-K

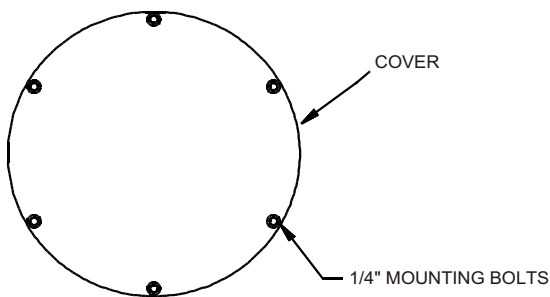
Features the 20G-CIM and MGP Control Panel

ITEM NO.	PUMP VOLTAGE	BASIN SIZE (DIAMETER & DEPTH)	DESCRIPTION
520806	230V	24" x 60"	BS2460PB
520802	208V	24" x 60"	BS2460PB
520807	230V	24" x 72"	BS2472PB
520803	208V	24" x 72"	BS2472PB

20GH-SMPX-K

Features the 20GH-CIM and MGP Control Panel

ITEM NO.	PUMP VOLTAGE	BASIN SIZE (DIAMETER & DEPTH)	DESCRIPTION
520814	230V	24" x 60"	BS2460PB
520810	208V	24" x 60"	BS2460PB
520815	230V	24" x 72"	BS2472PB
520811	208V	24" x 72"	BS2472PB

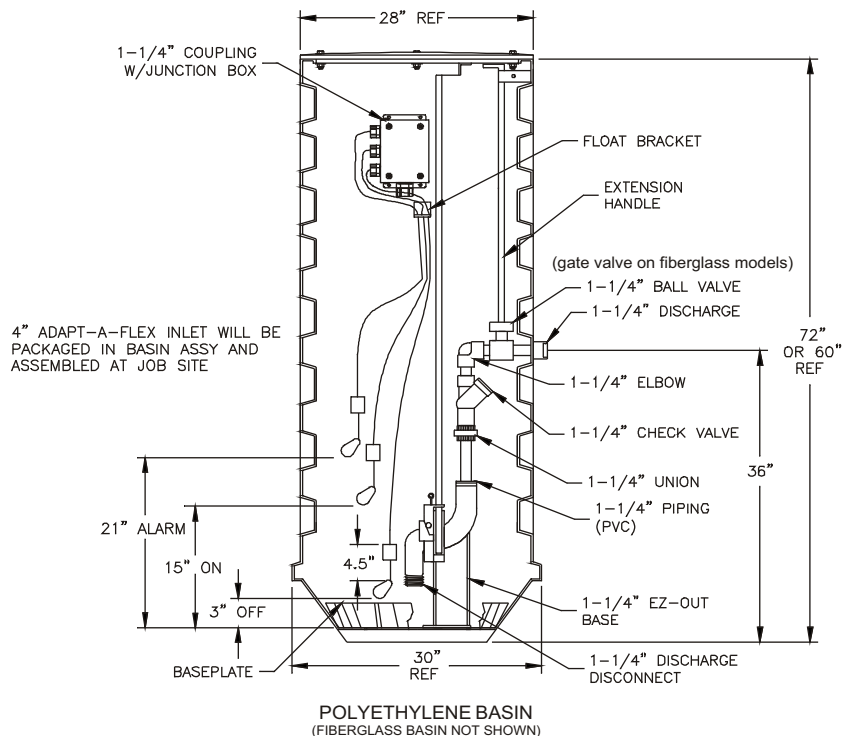


QTI Basin / Cover Assemblies

(Does not include pump or panel)

QTI Basin/Cover Assemblies are pre-assembled with E-Z out rail system, w/ sealing flange, discharge pipe disconnect, three pre-set control float switches, stainless steel float bracket, stainless steel guide rails, lifting chain, junction box, ball valve (gate valve on Fiberglass models) and ball check valve.

ITEM NO.	MODEL	CONSTRUCTION	SIZE
513140	BS2460FG-K	FIBERGLASS	24" x 60"
513141	BS2472FG-K	FIBERGLASS	24" x 72"
513142	BS2460PB-K	POLYETHYLENE	24" x 60"
513143	BS2472PB-K	POLYETHYLENE	24" x 72"



Little Giant Pump Co.

PO Box 12010
Okla. City, OK 73157

Phone: 405.947.2511
Fax: 405.228.1550

www.LittleGiantPump.com

Form No. 995233 - 01/00