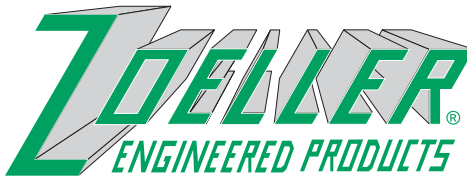


"QUALITY PUMPS SINCE 1939"



SECTION: Z3.20.100
ZM1793
0810
Supersedes
0306

Product information presented here reflects conditions at time of publication. Consult factory regarding discrepancies or inconsistencies.

MAIL TO: P.O. BOX 16347 • Louisville, KY 40256-0347
SHIP TO: 3649 Cane Run Road • Louisville, KY 40211-1961
(502) 778-2731 • 1 (800) 928-PUMP • FAX (502) 774-3624

visit our web site:
www.zoeller.com



X6280 & X6290 HAZARDOUS ENVIRONMENT SERIES

CLASS I, DIVISION I, GROUP C & D

PRODUCT FEATURES

Commercial Duty Sewage

2" Solids / 2" & 3" Discharge



APPLICATIONS



WARNING Not for use in acidic, methanol or ethyl acetate atmospheres.

- Pumping Stations.
- Parking Lot Dewatering.
- Parking Garage Sumps.
- Commercial Sewage.



Certified to CSA Standard C22.2 No. 145

MATERIAL FEATURES

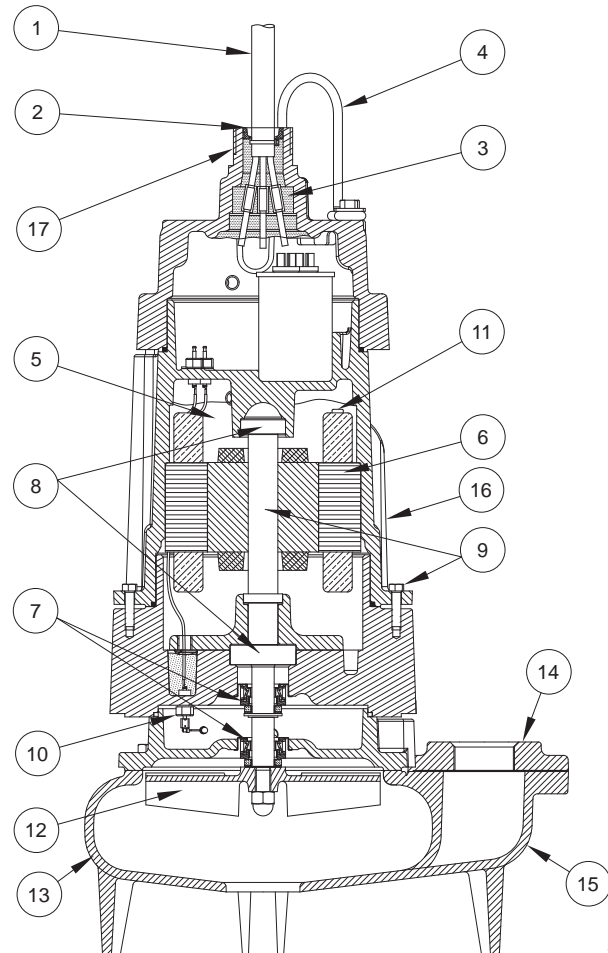
PUMP:

- Solids - 2" spherical capability.
- Discharge Size - 2" or 3" NPT Vertical.
- Seals - dual mechanical carbon/stationary ceramic/rotary, Buna-N elastomers.
- Construction - Cast Iron ASTM A-48, Class 30, 30,000# tensile strength, protected with a corrosion resistant baked on epoxy powder coating.
- Seal leak probes.
- Balanced concentric pump housing and impeller.
- Attaching Hardware - 304 stainless steel.
- "O" Ring Seals - Neoprene.
- Impeller - Cast Iron Vortex (X6280), Bronze Vortex (X6290).
- Optional:
 - Additional cord length ____ ft.
 - Silicon Carbide Seals
 - Viton "O" Ring Seals
 - Non-sparking Rail Systems



MOTOR:

- 1 Phase - 115/200/230 Volt, 1750/3450 RPM.
- 3 Phase - 200/230/460/575 Volt, 1750/3450 RPM.
- FM Approved and CSA listed Class I, Division I, Group C & D construction.
- Stator - Class B insulation and lead wires.
- 416 SS motor shaft.
- Oil-filled motor housing.
- Finned cast iron housing for faster heat dissipation.
- Integral overload protection (1-phase).
- Thermal Sensors with lead wires (3-phase).
- Ball Bearings - Upper and lower high carbon chromium steel.
- Power Cable Length - 25'.



SK1986

ENGINEERING FEATURES:

1. 25' of heavy duty power and sensor cable.
2. Protected cable entrance.
3. Each conductor is individually sealed to eliminate cord wicking of liquids.
4. Lifting bracket.
5. Oil-filled motor housing assures uniform heat distribution, lubricates bearings, and conducts heat for cooler running.
6. Heavy duty motor features ball bearing construction. Class B motor insulation is double dipped and baked.
7. Tandem seals. Carbon/stationary, ceramic/rotary, Buna-N elastomers.
8. Upper and lower high carbon chromium steel ball bearings.
9. Stainless steel shaft and hardware resists corrosion.
10. Standard: Seal leak detector probes.
11. Standard: Thermal sensor protection. Three phase motors have 2 normally closed temperature sensors imbedded in windings. One phase motors have overload protection.

12. Balanced vortex impeller with top pump out vanes for seal protection.
13. Concentric case reduces radial loading for longer bearing and seal life.
14. 2" & 3" NPT vertical discharge.
15. Units protected with corrosion resistant baked on epoxy powder coating.
16. Finned Motor Housing for superior heat dissipation.
17. 1.25" NPT threads available for cordage protection.

For additional information on X6200 Series pumps, refer to catalog on Technical Data, ZM1794; Performance Data, ZM1795; Dimensional Data, ZM1796; Guide Specifications, ZM1836 and ZM1837.

For information on additional Zoeller products refer to catalog on Rail Systems, ZM1347; Control Panels, ZM1342; Float Switch Brackets and Pump Lifting Cables, ZM1328; Check Valves and Piping Accessories, ZM1348.



X6404 & X6405 HAZARDOUS ENVIRONMENT SERIES

CLASS I, DIVISION I, GROUP C & D

PRODUCT FEATURES

Commercial Duty Sewage

3" Solids / 4" Discharge



APPLICATIONS



WARNING Not for use in acidic, methanol or ethyl acetate atmospheres.

- Pumping Stations.
- Parking Lot Dewatering.
- Parking Garage Sumps.
- Commercial Sewage.



Certified to CSA Standard C22.2 No. 145

MATERIAL FEATURES

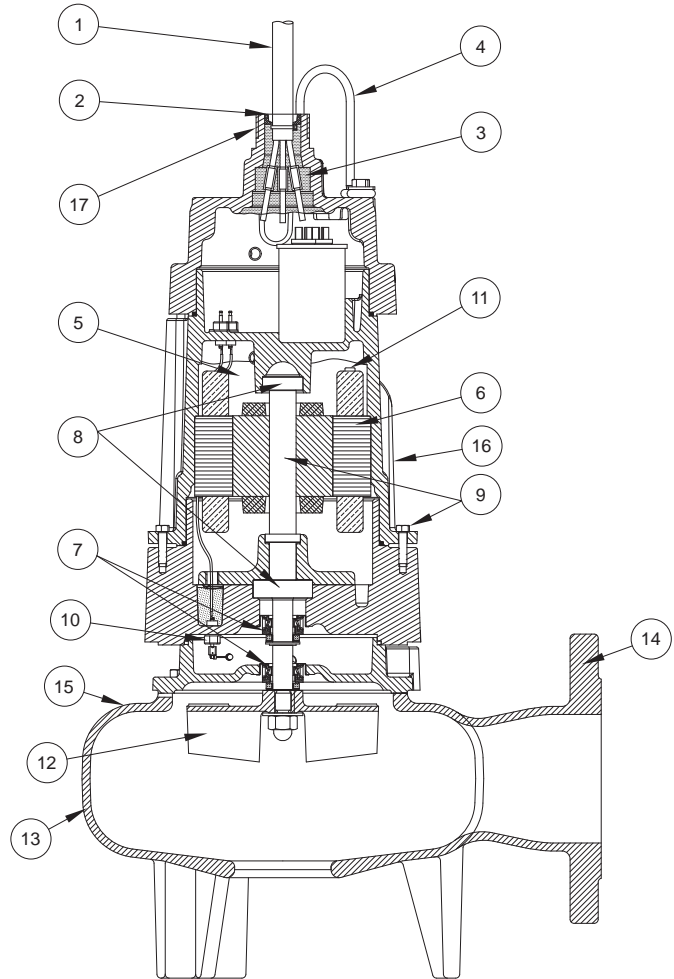
PUMP:

- Solids - 3" spherical capability.
- Discharge Size - 4" ANSI horizontal.
- Seals - dual mechanical carbon/stationary ceramic/rotary, Buna-N elastomers.
- Construction - Cast Iron ASTM A-48, Class 30, 30,000# tensile strength, protected with a corrosion resistant baked on epoxy powder coating.
- Seal leak probes.
- Balanced concentric pump housing and impeller.
- Attaching Hardware - 304 stainless steel.
- "O" Ring Seals - Neoprene.
- Impeller - Cast Vortex Impeller
- Optional:
 - Additional cord length ____ ft.
 - Silicon Carbide Seals
 - Viton "O" Ring Seals
 - Non-sparking Rail Systems



MOTOR:

- 1 Phase - 200/230 Volt, 1750 RPM.
- 3 Phase - 200/230/460/575 Volt, 1750 RPM.
- FM Approved and CSA listed Class I, Division I, Group C & D construction.
- Stator - Class B insulation and lead wires.
- 416 SS motor shaft.
- Oil-filled motor housing.
- Finned cast iron housing for faster heat dissipation.
- Integral overload protection (1-phase).
- Thermal sensors with lead wires (3-phase).
- Ball Bearings - Upper and lower high carbon chromium steel.
- Power Cable Length - 25'.



SK1988

ENGINEERING FEATURES:

1. 25' of heavy duty power and sensor cable.
2. Protected cable entrance.
3. Each conductor is individually sealed to eliminate cord wicking of liquids.
4. Lifting bracket.
5. Oil-filled motor housing assures uniform heat distribution, lubricates bearings, and conducts heat for cooler running.
6. Heavy duty motor features ball bearing construction. Class B motor insulation is double dipped and baked.
7. Tandem seals. Carbon/stationary, ceramic/rotary, Buna-N elastomers.
8. Upper and lower high carbon chromium steel ball bearings.
9. Stainless steel shaft and hardware resists corrosion.
10. Standard: Seal leak detector probes.
11. Standard: Thermal sensor protection. Three phase motors have 2 normally closed temperature sensors imbedded in windings. One phase motors have overload protection.
12. Balanced vortex impeller with top pump out vanes for seal protection. Keyed and bolted to shaft.
13. Concentric case reduces radial loading for longer bearing and seal life.
14. 4" ANSI flanged discharge.
15. Units protected with corrosion resistant baked on epoxy powder coating.
16. Finned Motor Housing for superior heat dissipation.
17. 1.25" NPT threads available for cordage protection.

For additional information on X6400 Series pumps, refer to catalog on Technical Data, ZM1794; Performance Data, ZM1795, Dimensional Data, ZM1797 and Guide Specifications, ZM1838.

For information on additional Zoeller products refer to catalog on Rail Systems, ZM1347; Control Panels, ZM1342; Float Switch Brackets and Pump Lifting Cables, ZM1328; Check Valves and Piping Accessories, ZM1348.