

Product information presented here reflects conditions at time of publication. Consult factory regarding discrepancies or inconsistencies.

MAIL TO: P.O. BOX 16347 • Louisville, KY 40256-0347
SHIP TO: 3649 Cane Run Road • Louisville, KY 40211-1961
(502) 778-2731 • 1 (800) 928-PUMP • FAX (502) 774-3624

visit our web site:
www.zoeller.com



X6160 & X6180 HAZARDOUS ENVIRONMENT SERIES

CLASS I, DIVISION I, GROUP C & D

PRODUCT FEATURES

Commercial Duty Effluent

3/4" Solids / 3450 RPM



APPLICATIONS



WARNING Not for use in acidic, methanol or ethyl acetate atmospheres.

- Industrial Dewatering.
- Automotive Repair Facilities Sumps.
- Septic Tank Effluent.
- Low Pressure Effluent Sewers.
- Quick Change Oil Stations.

MATERIAL FEATURES

PUMP:

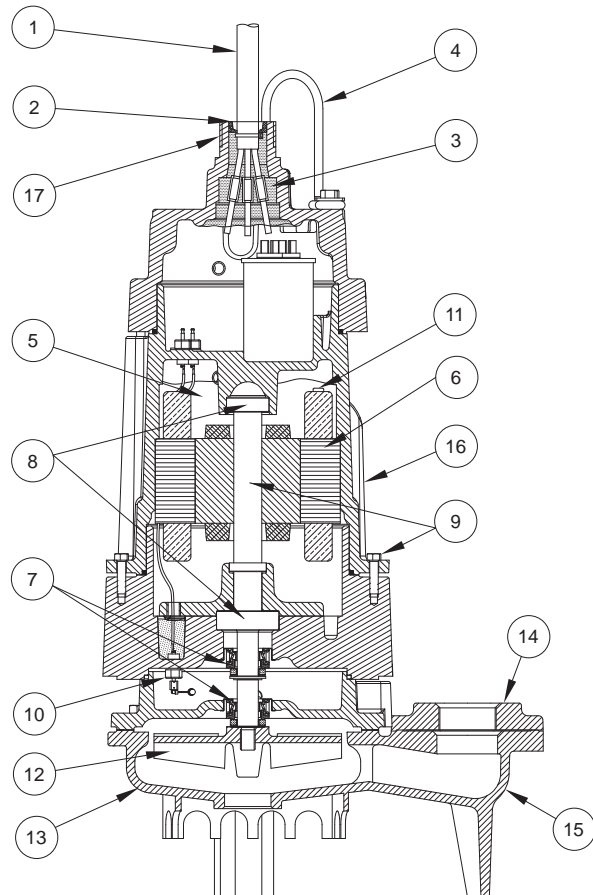
- Solids - 3/4" spherical capability.
- Discharge Size - 1 1/2", 2", and 3" NPT Vertical.
- Seals - dual mechanical carbon/stationary ceramic/rotary, Buna-N elastomers.
- Construction - Cast Iron ASTM A-48, Class 30, 30,000# tensile strength, protected with a corrosion resistant baked on epoxy powder coating.
- Seal leak probes.
- Balanced concentric pump housing and impeller.
- Attaching Hardware - 304 stainless steel.
- "O" Ring Seals - Neoprene.
- Impeller - Bronze Vortex Impeller
- Optional:
 - Additional cord length ____ ft.
 - Silicon carbide seals
 - Viton "O" Ring Seals
 - Non-sparking Rail Systems

MOTOR:

- 1 Phase - 115/200/230 Volt, 3450 RPM.
- 3 Phase - 200/230/460/575 Volt, 3450 RPM.
- Stator - Class B insulation and lead wires .
- 416 SS motor shaft.
- Oil-filled motor housing.
- Finned cast iron housing for faster heat dissipation.
- Integral overload protection (1-phase).
- Thermal sensors with lead wires (3-phase).
- Ball Bearings - Upper and lower high carbon chromium steel.
- FM Approved and CSA Certified Class I, Division I, Group C & D construction.
- Power Cable Length - 25'.



Certified to CSA Standard C22.2 No. 145



SK1987

ENGINEERING FEATURES:

1. 25' of heavy duty power cable.
2. Protected cable entrance. Power & Sensor leads in one cable.
3. Each conductor is individually sealed to eliminate cord wicking of liquids.
4. Lifting bracket.
5. Oil-filled motor housing assures uniform heat distribution, lubricates bearings, and conducts heat for cooler running.
6. Heavy duty motor features ball bearing construction. Class B motor insulation.
7. Dual independent seals. Carbon/stationary, ceramic/rotating, Buna-N elastomers.
8. Upper and lower high carbon chromium steel ball bearings.
9. Stainless steel shaft and hardware resists corrosion.
10. Standard: Seal leak detector probes with an external checking circuit.

11. Standard: Thermal sensor protection. Three phase motors have 2 normally closed temperature sensors imbedded in windings. Single phase motors have overload protectors.
12. Balanced vortex impeller with top pump out vanes for seal protection.
13. Concentric case reduces radial loading for longer bearing and seal life.
14. 1 1/2", 2" & 3" NPT vertical discharge.
15. Units protected with corrosion resistant baked on epoxy powder coating.
16. Finned motor housing for superior heat dissipation.
17. 1.25" NPT threads available for cordage protection.

For additional information on 6100 Series pumps, refer to catalog on Performance Data, ZM1801; Dimensional Data, ZM1792; Guide Specifications, ZM1835.

For information on additional Zoeller products refer to catalog on Rail Systems, ZM1347; Control Panels, ZM1342; Float Switch Brackets and Pump Lifting Cable, ZM1328; Check Valves and Piping Accessories, ZM1348.



X6160 & X6180 HAZARDOUS ENVIRONMENT SERIES

CLASS I, DIVISION I, GROUP C & D

TECHNICAL DATA

Commercial Duty Effluent

3/4" Solids / 3450 RPM



MODEL NUMBER:	<input type="checkbox"/> X6161	<input type="checkbox"/> X6163	<input type="checkbox"/> X6165	<input type="checkbox"/> X6185	<input type="checkbox"/> X6186	<input type="checkbox"/> X6188	<input type="checkbox"/> X6189
PUMP NAME PLATE HORSEPOWER: HP	.5	.5	1.0	1.0	1.5	1.5	2.0
DISCHARGE SIZE:	<input type="checkbox"/> 1 1/2" NPT		<input type="checkbox"/> 2" NPT			<input type="checkbox"/> 3" NPT	

SOLID SIZE: in (mm)	3/4" (19mm)	TANDEM SEALS:	STANDARD
IMPELLER TYPE:	BRONZE VORTEX	MOTOR DESIGN LETTER:	NEMA B
PUMP NET WEIGHT: lbs. (kg)	125-133 lbs (57-60 kg)	CORD LENGTH: ft (m)	25' (7.6 m) <input type="checkbox"/> _____'
MOTOR SHAFT:	416 SS	SENSOR CORD SIZE:	INCLUDED W/POWER CORD
RPM:	3450	STATOR & LEAD WIRES INSULATION:	CLASS B w/600V LEADS
MOTOR TYPE FM & CSA	SUBMERSIBLE	MAXIMUM STATOR TEMPERATURE:	266°F (130°C)
APPROVED:	CLASS I, DIVISION I, GROUP C & D	TEMPERATURE CODE:	T5 (1PH) T6 (3PH)

SHAFT SEAL CONSTRUCTION:	STANDARD	CARBON/CERAMIC
	OPTIONAL UPPER	<input type="checkbox"/> CARBON/SILICON CARBIDE <input type="checkbox"/> SILICON CARBIDE/SILICON CARBIDE
	OPTIONAL LOWER	<input type="checkbox"/> CARBON/SILICON CARBIDE <input type="checkbox"/> SILICON CARBIDE/SILICON CARBIDE
STANDARD SENSING DEVICES**	MOTOR THERMAL SHUTOFF	INTEGRAL OVERLOAD WITH AUTOMATIC RESET - 1 PHASE
		THERMAL SENSOR WITH LEAD WIRES - 3 PHASE
	MOISTURE DETECTION	MOISTURE SENSING PROBES WITH LEAD WIRES
MINIMUM FLUID LEVEL FOR CONTINUOUS OPERATIONS: in (m)	24" (0.6m)	
MAXIMUM WATER TEMPERATURE:	104°F (40°C)	

**Requires a circuit in control panel to function.

MODEL	HP	<input type="checkbox"/> 115V/1PHASE	<input type="checkbox"/> 200V/1PHASE	<input type="checkbox"/> 230V/1PHASE	<input type="checkbox"/> 200V/3PHASE	<input type="checkbox"/> 230V/3PHASE	<input type="checkbox"/> 460V/3PHASE	<input type="checkbox"/> 575V/3PHASE
		FLA	FLA	FLA	FLA	FLA	FLA	FLA
X6161	.5	15.5	8.8	7.5	6.4	5.2	2.9	2.4
X6163	.5	15.5	8.5	7.5	6.0	4.8	2.9	2.4
X6165	1.0	N/A	12.6	10.2	7.5	7.4	3.7	3.0
X6185	1.0	N/A	11.5	9.8	7.5	7.4	3.7	3.0
X6186	1.5	N/A	17.2	13.7	10.3	9.2	4.6	N/A
X6188	1.5	N/A	16.8	14.0	10.3	8.9	4.6	3.5
X6189	2.0	N/A	20.5	17.1	13.2	11.2	6.0	5.8