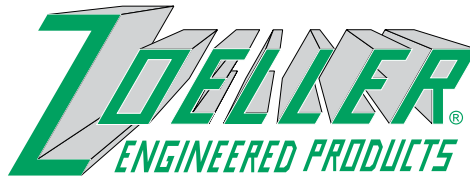


"QUALITY PUMPS SINCE 1939"

Product information presented here reflects conditions at time of publication. Consult factory regarding discrepancies or inconsistencies.



SECTION: Z4.10.215
ZM2189
0807
Supersedes
1205

MAIL TO: P.O. BOX 16347 • Louisville, KY 40256-0347
SHIP TO: 3649 Cane Run Road • Louisville, KY 40211-1961
(502) 778-2731 • 1 (800) 928-PUMP • FAX (502) 774-3624

visit our web site:
www.zoeller.com



6800 SERIES SINGLE DIRECTIONAL GRINDER PUMPS

6842 - 6841
2 BHP 3 BHP



APPLICATIONS

- Small Lift Stations • Housing Developments • Pressure Sewers

SPECIFICATIONS

PUMP:

- Discharge Size - 1 1/4" NPT Vertical.
- Seals - dual mechanical carbon/rotary, ceramic/stationary, with Buna-N elastomers.
- Construction - Cast iron ASTM A-48, Class 30, 30,000# tensile strength.
- Corrosion resistant powder coated epoxy finish.
- Stainless steel cutter and plate hardened to Rockwell C 55-60.
- Attaching hardware and lifting bracket - 304 stainless steel.
- O-ring seals - Buna-N.
- Impeller - bronze vortex impeller with top pump out vanes.
- Moisture detection system.
- 135 lbs.

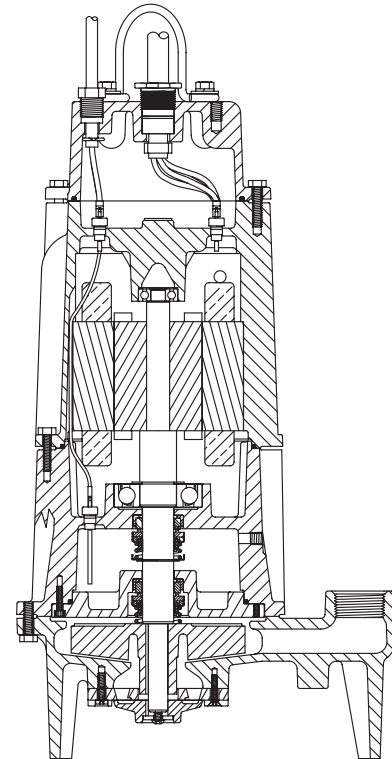
- OPTIONAL:** Additional cord length ____ ft. Rail systems
 Silicon carbide seal(s) Prepackaged Systems

MOTOR:

- 2 BHP - 6842 3 BHP - 6841.
- 1 Phase - 200/230 Volt with integral thermal overload.
- 3 Phase - 200/230/460/575 Volt with thermal sensor and leads.
- Stainless steel motor shaft.
- Stator - Class F insulation and lead wires. NEMA B design.
- Housing - Cast iron, oil-filled, protected by cooling fins.
- Ball bearings - Dual high carbon chromium steel.
- Power cable length - 20 ft.

SYSTEMS:

- Refer to ZM1288 for packaged basin assemblies and accessories.



ZEPA0374

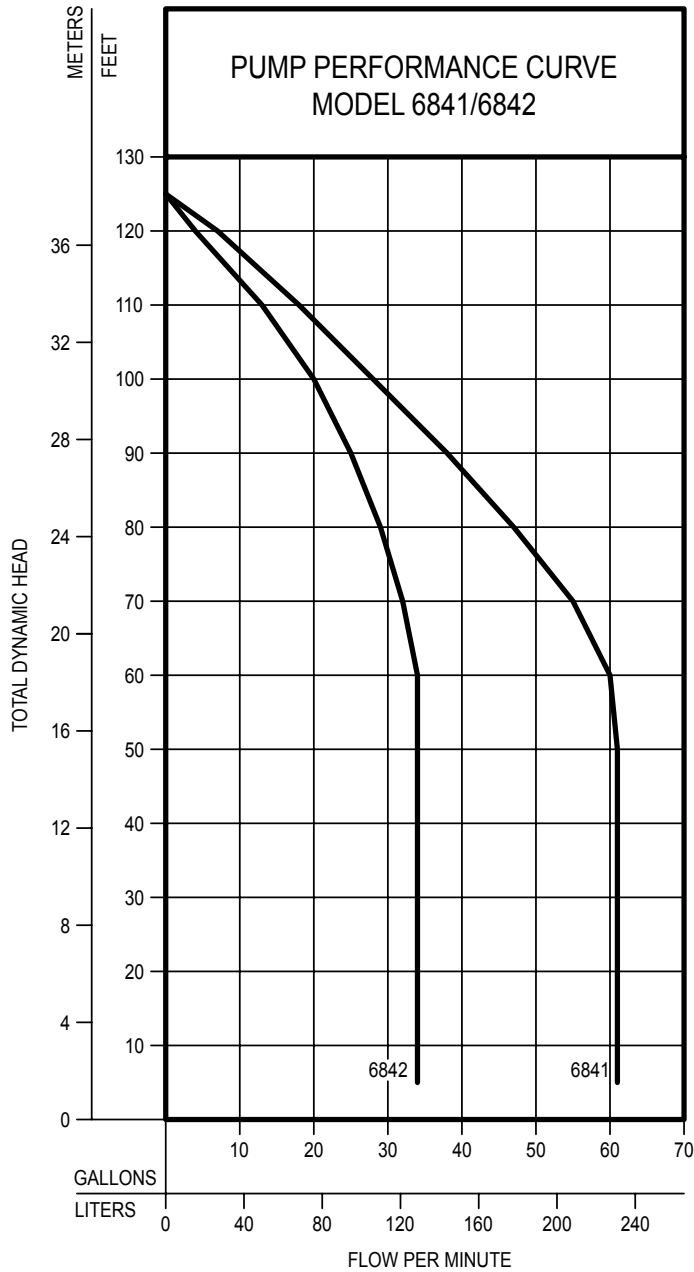
Electrical Data and Control Panel Selections

Models	Part Number	Volts	Phase	BHP	Amps	*Start Pak	**NEMA 4X Control Panels	
							Simplex	Duplex
E6842	6842-0004	230	1	2	17.2	10-0380	10-1650	10-1652
I6842	6842-0005	200	1	2	20.0	10-0380	10-1650	10-1652
J6842	6842-0006	200	3	2	12.3	Not Required	10-1097	10-1125
F6842	6842-0007	230	3	2	10.8	Not Required	10-1097	10-1125
G6842	6842-0008	460	3	2	5.5	Not Required	10-1094	10-1122
BA6842	6842-0010	575	3	2	4.5	Not Required	10-1146	10-1168
E6841	6841-0004	230	1	3	17.2	10-0380	10-1650	10-1652
I6841	6841-0006	200	1	3	20.0	10-0380	10-1650	10-1652
J6841	6841-0007	200	3	3	12.3	Not Required	10-1097	10-1125
F6841	6841-0008	230	3	3	10.8	Not Required	10-1097	10-1125
G6841	6841-0009	460	3	3	5.5	Not Required	10-1094	10-1122
BA6841	6841-0010	575	3	3	4.5	Not Required	10-1146	10-1168

* Capacitors and Start Relay are shipped loose for Field Installation.

** Control Panels include Seal Leak Indication, Visual and Audible High Water Alarm and Dry Contacts. Single Phase Control Panels include Capacitors and Start Relay.

© Copyright 2007 Zoeller Co. All rights reserved.



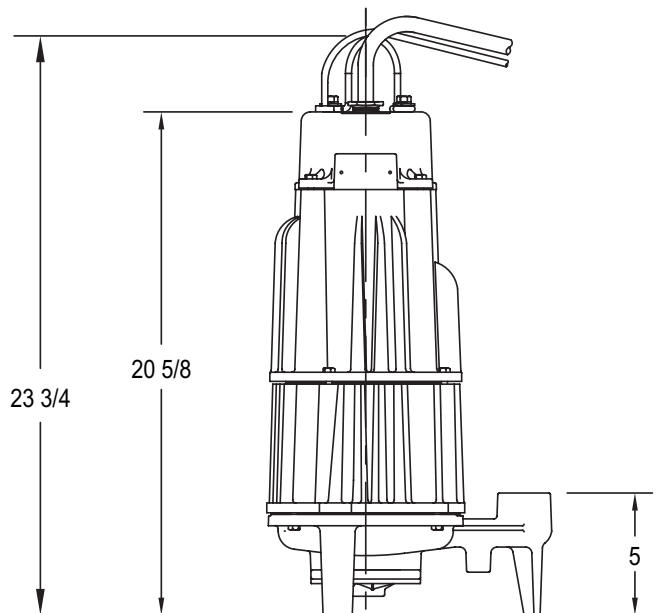
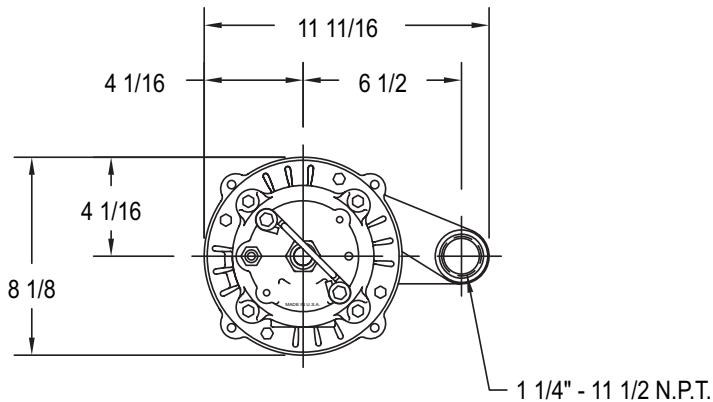
**TOTAL DYNAMIC HEAD/FLOW
PER MINUTE
SEWAGE**

MODEL		6841		6842	
Feet	Meters	Gal.	Liters	Gal.	Liters
5	1.5	61	231	34	129
10	3.0	61	231	34	129
20	6.1	61	231	34	129
30	9.1	61	231	34	129
40	12.2	61	231	34	129
50	15.2	61	231	34	129
60	18.3	60	227	34	129
70	21.3	55	208	32	121
80	24.4	47	178	29	110
90	27.4	38	144	25	95
100	30.5	28	106	20	76
110	33.5	18	68	13	49
120	36.6	7	26	4	15
Shut-off Head:		125 ft (38.1 m)		125 ft (38.1 m)	

019332

Packaged & Field Assembled Systems

Refer to ZM1288 for Basin Assemblies and Accessories that can be used with model 6842 or 6841 Pump Systems.



SK2365