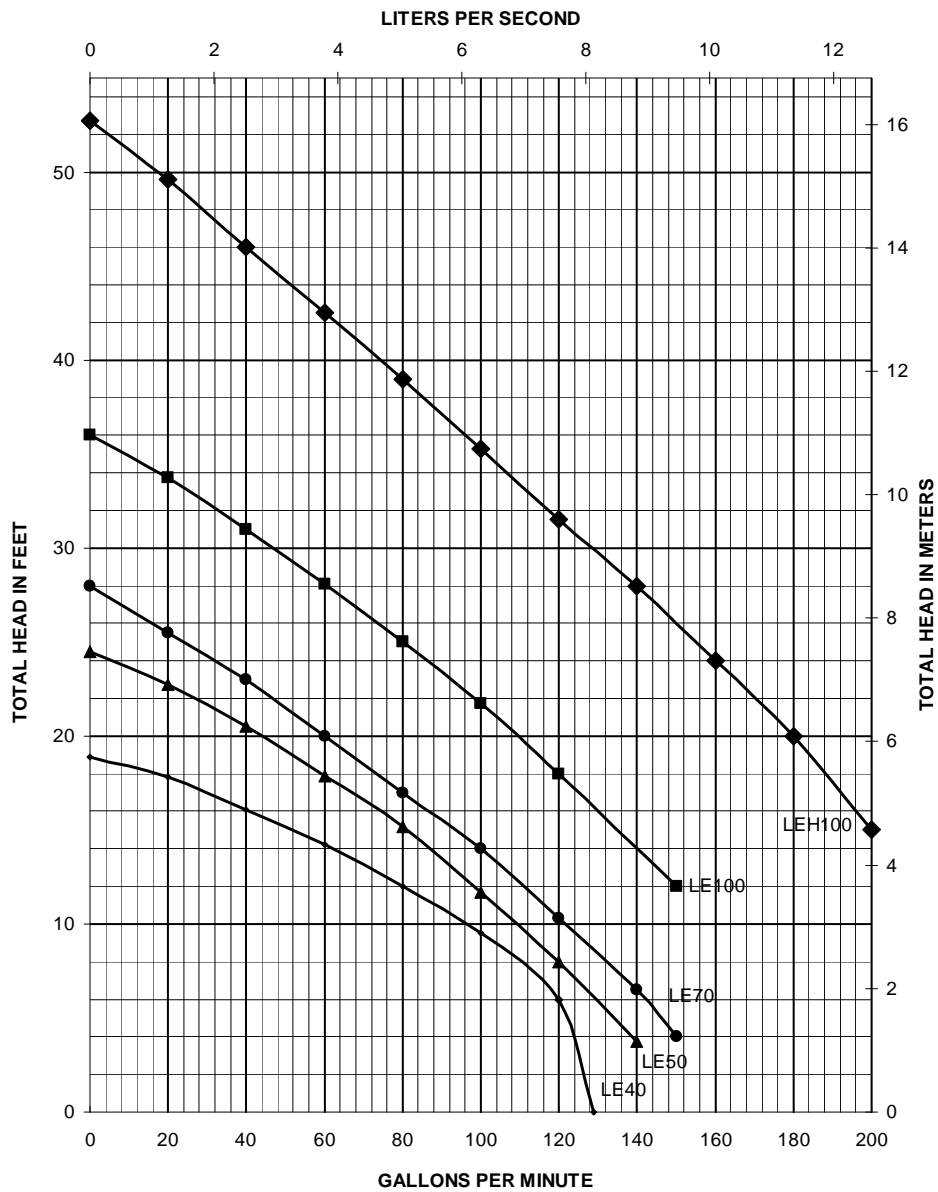
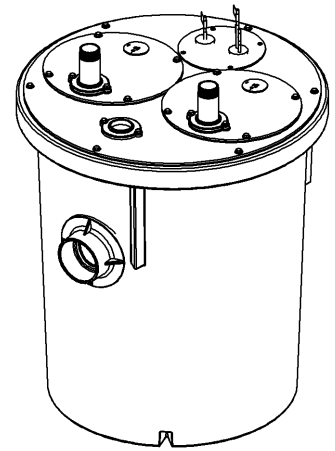


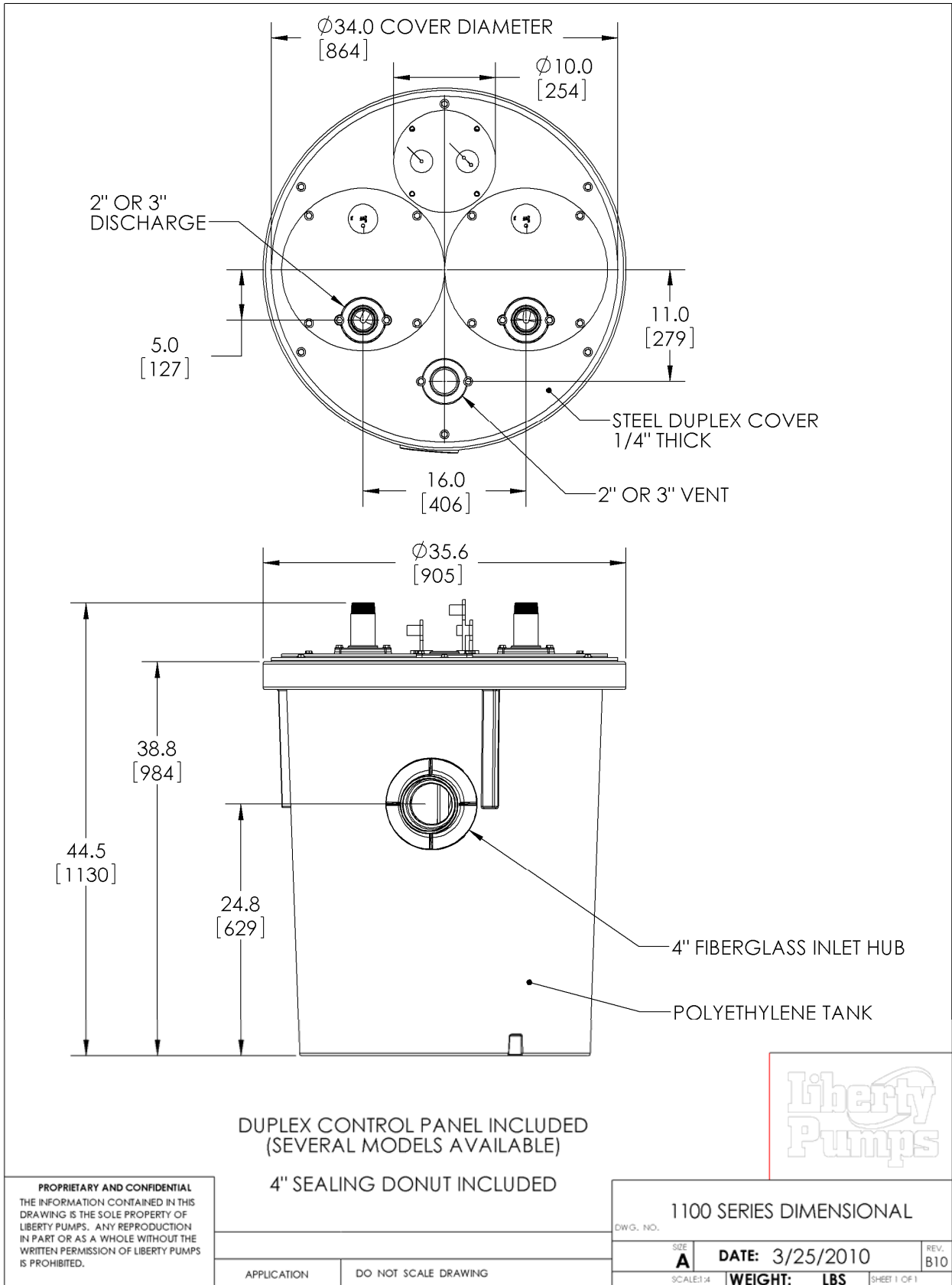


# Pump Specifications

1100-Series  
Pre-assembled Duplex Sewage System  
30" x 36", 110 Gallon



# 1100-Series Dimensional Data



**PROPRIETARY AND CONFIDENTIAL**  
 THE INFORMATION CONTAINED IN THIS DRAWING IS THE SOLE PROPERTY OF LIBERTY PUMPS. ANY REPRODUCTION IN PART OR AS A WHOLE WITHOUT THE WRITTEN PERMISSION OF LIBERTY PUMPS IS PROHIBITED.

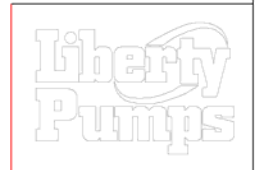
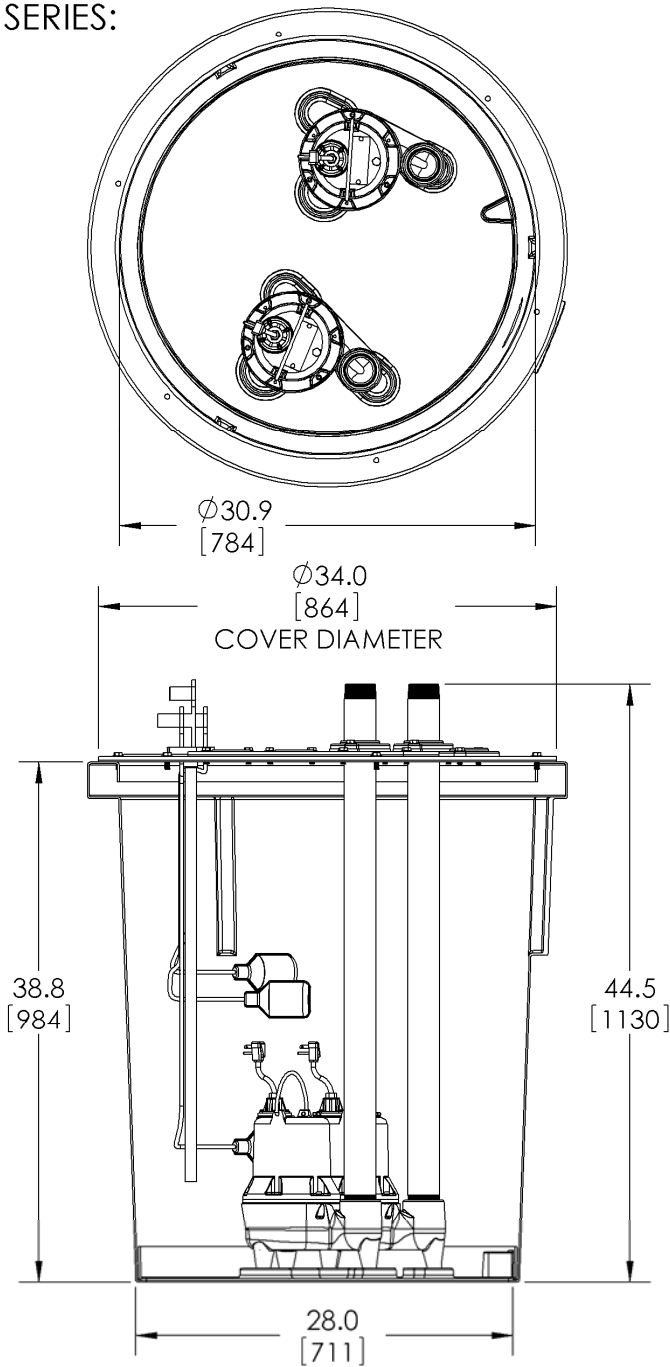
APPLICATION		DO NOT SCALE DRAWING	
-------------	--	----------------------	--

1100 SERIES DIMENSIONAL			
DWG. NO.			
SIZE	DATE: 3/25/2010	REV. B10	
SCALE: 1/4"	WEIGHT: LBS	SHEET 1 OF 1	

LE40 SERIES SHOWN

AVAILABLE SERIES:

- LE40
- LE50
- LE70
- LE100
- LEH100
- LEH150
- LEH200
- FL100
- FL150
- FL200



**PROPRIETARY AND CONFIDENTIAL**  
 THE INFORMATION CONTAINED IN THIS DRAWING IS THE SOLE PROPERTY OF LIBERTY PUMPS. ANY REPRODUCTION IN PART OR AS A WHOLE WITHOUT THE WRITTEN PERMISSION OF LIBERTY PUMPS IS PROHIBITED.

1100 SERIES DIMENSIONAL			
DWG. NO.			
SIZE <b>A</b>	DATE: 3/25/2010	REV. B10	
SCALE: 1:4	<b>WEIGHT: LBS</b>	SHEET 1 OF 1	

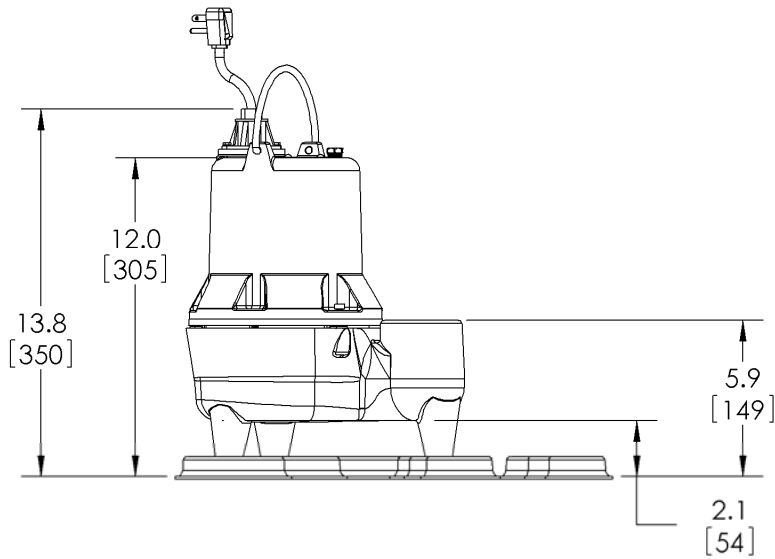
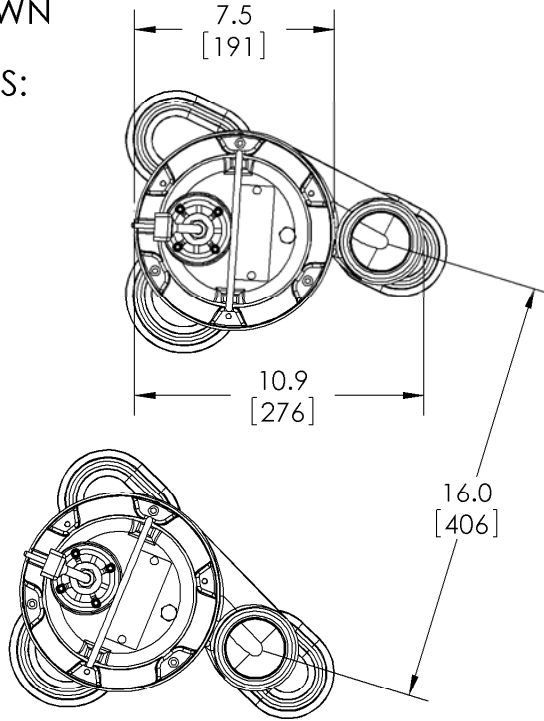
APPLICATION	DO NOT SCALE DRAWING
-------------	----------------------



LE40 SERIES SHOWN

AVAILABLE SERIES:

- LE40
- LE50
- LE70
- LE100
- LEH100
- LEH150
- LEH200
- FL100
- FL150
- FL200



**PROPRIETARY AND CONFIDENTIAL**  
 THE INFORMATION CONTAINED IN THIS DRAWING IS THE SOLE PROPERTY OF LIBERTY PUMPS. ANY REPRODUCTION IN PART OR AS A WHOLE WITHOUT THE WRITTEN PERMISSION OF LIBERTY PUMPS IS PROHIBITED.

1100 SERIES DIMENSIONAL

DWG. NO.

SIZE  
**A**

DATE: 3/25/2010

REV.  
 B10

APPLICATION

DO NOT SCALE DRAWING

SCALE: 1/4"

WEIGHT: **LBS**

SHEET 1 OF 1

# 1100-Series Electrical Data

MODEL	HP	VOLTAGE	PHASE	SF	FULL LOAD AMPS	LOCKED ROTOR AMPS	THERMAL OVERLOAD TEMP	STATOR WINDING CLASS	DISCHARGE	AUTOMATIC
1102/LE41M	4/10	115	1	1.00	12	22	105°C 221°F	B	2"	NO
1102/LE51M	1/2	115	1	1.00	12	22.5	105°C 221°F	B	2"	NO
1102/LE52M	1/2	208-230	1	1.00	6.8	12	105°C 221°F	B	2"	NO
1102/LE71M	3/4	115	1	1.00	12	28	105°C 221°F	B	2"	NO
1102/LE72M	3/4	208-230	1	1.00	6	13	105°C 221°F	B	2"	NO
1102/LE73M	3/4	208-230	3	1.00	4.1	13.5	105°C 221°F	B	2"	NO
1102/LE74M	3/4	440-480	3	1.00	2.1	7	105°C 221°F	B	2"	NO
1102/LE102M	1	208-230	1	1.00	8	21	105°C 221°F	B	2"	NO
1102/LE103M	1	208-230	3	1.00	5.3	17.5	N/A	B	2"	NO
1102/LE104M	1	440-480	3	1.00	2.5	8.5	N/A	B	2"	NO
1102/LE105M	1	575	3	1.00	1.9	7.0	N/A	B	2"	NO
1102/LEH102M	1	208-230	1	1.00	12	30	105°C 221°F	B	2"	NO
1102/LEH103M	1	208-230	3	1.00	9	32	N/A	B	2"	NO
1102/LEH104M	1	440-480	3	1.00	4.5	16	N/A	B	2"	NO
1103/LE41M	4/10	115	1	1.00	12	22	105°C 221°F	B	3"	NO
1103/LE51M	1/2	115	1	1.00	12	22.5	105°C 221°F	B	3"	NO
1103/LE52M	1/2	208-230	1	1.00	6.8	12	105°C 221°F	B	3"	NO
1103/LE71M	3/4	115	1	1.00	12	28	105°C 221°F	B	3"	NO
1103/LE72M	3/4	208-230	1	1.00	6	13	105°C 221°F	B	3"	NO
1103/LE73M	3/4	208-230	3	1.00	4.1	13.5	105°C 221°F	B	3"	NO
1103/LE74M	3/4	440-480	3	1.00	2.1	7	105°C 221°F	B	3"	NO
1103/LE102M	1	208-230	1	1.00	8	21	105°C 221°F	B	3"	NO
1103/LE103M	1	208-230	3	1.00	5.3	17.5	N/A	B	3"	NO
1103/LE104M	1	440-480	3	1.00	2.5	8.5	N/A	B	3"	NO
1103/LE105M	1	575	3	1.00	1.9	7.0	N/A	B	3"	NO
1103/LEH102M	1	208-230	1	1.00	12	30	105°C 221°F	B	3"	NO
1103/LEH103M	1	208-230	3	1.00	9	32	N/A	B	3"	NO
1103/LEH104M	1	440-480	3	1.00	4.5	16	N/A	B	3"	NO

## 1100-Series Technical Data

---

<b>TANK</b>	HEAVY-DUTY ROTATIONALLY MOLDED POLYETHYLENE BASIN
<b>COVER</b>	POWDER COATED STEEL
<b>GUIDE RAIL</b>	NONE – PUMPS PULL OUT WITH COVER
<b>INSPECTION COVER</b>	10" STEEL WITH INTEGRAL FLOAT TREE
<b>INLET HUB</b>	4" (PREASSEMBLED)
<b>DISCHARGE PIPING</b>	SCHEDULE 80 PVC (GALVANIZED OR STAINLESS STEEL OPTIONAL)
<b>PUMP RESTRAINT</b>	TORQUE-STOPS SECURE PUMP LEGS
<b>CONTROL PANELS</b>	DUPLEX - INDOOR OR OUTDOOR ALARM WITH VISUAL AND AUDIBLE (80 DBI) ALARM
<b>IMPELLER</b>	SEE INDIVIDUAL PUMP MODELS SPEC SHEET
<b>PAINT</b>	SEE INDIVIDUAL PUMP MODELS SPEC SHEET
<b>MAX LIQUID TEMP</b>	SEE INDIVIDUAL PUMP MODELS SPEC SHEET
<b>MAX STATOR TEMP</b>	SEE INDIVIDUAL PUMP MODELS SPEC SHEET
<b>THERMAL OVERLOAD</b>	SEE INDIVIDUAL PUMP MODELS SPEC SHEET
<b>POWER CORD TYPE</b>	SEE INDIVIDUAL PUMP MODELS SPEC SHEET
<b>MOTOR HOUSING</b>	SEE INDIVIDUAL PUMP MODELS SPEC SHEET
<b>VOLUTE</b>	SEE INDIVIDUAL PUMP MODELS SPEC SHEET
<b>SHAFT</b>	SEE INDIVIDUAL PUMP MODELS SPEC SHEET
<b>HARDWARE</b>	SEE INDIVIDUAL PUMP MODELS SPEC SHEET
<b>ORINGS</b>	SEE INDIVIDUAL PUMP MODELS SPEC SHEET
<b>MECHANICAL SEAL</b>	SEE INDIVIDUAL PUMP MODELS SPEC SHEET
<b>MIN BEARING LIFE</b>	SEE INDIVIDUAL PUMP MODELS SPEC SHEET

## 1100-Series Specifications

---

### SYSTEM

The duplex ejector system shall be model \_\_\_\_\_ / \_\_\_\_\_ as manufactured by Liberty Pumps, Bergen, N.Y. or equal. The system shall be factory pre-assembled with pumps, discharge pipe nipples, and floats pre-mounted in the basin. Volume per pump cycle shall be factory set at 28 U.S. gallons. Floats shall be tethered to a removable standpipe/access cover assembly.

### BASIN

The basin shall be constructed of heavy duty rotationally molded polyethylene. Dimensions shall be 30" diameter x 36" deep and shall have a total capacity of 110 U.S. gallons. The inlet hub shall be 4" and preassembled to basin. The basin shall have "torque-stops" to locate and retain the pump in its proper position.

### COVER

The cover shall be "heavy duty" 1/4" steel plate, enamel-coated on both sides. The cover shall be 34" in diameter, and have \_\_\_\_\_ (2" or 3") discharges and vent flange. The cover shall be fitted with two 16" diameter pump openings, and one 10" diameter inspection cover with integral stand pipe for float tethering. All cover hardware shall be stainless steel.

### PUMP

See specific LE-Series literature for pump performance and technical specifications.

## 1100-Series Controls

---

The pump shall be controlled with:

\_\_\_\_\_ A NEMA 4X outdoor duplex control panel with three float switches and a high water alarm.

\_\_\_\_\_ A NEMA 1 indoor duplex control panel with three float switches and a high water alarm.

\_\_\_\_\_ A NEMA 4X outdoor duplex control panel with four float switches and a high water alarm.

\_\_\_\_\_ A NEMA 1 indoor duplex control panel with four float switches and a high water alarm.

### **WARRANTY**

Standard limited warranty shall be 2 years.