

SCX1700 Stainless Steel Close-Coupled Centrifugal Pump (1/2 to 2 1/2 HP)

The SCX1700 is a close-coupled, space saving centrifugal pump that simplifies installation and maintenance and provides quiet, efficient operation and unmatched reliability. Superior materials of construction, installation flexibility and a high efficiency impeller make it an ideal pump for a broad range of applications traditionally requiring materials such as all iron, bronze fitted or all bronze construction.



HYDRONIC COMPONENTS & SYSTEMS

**Do it once.
Do it right.™** 

Submittal Data Information SCX Series Centrifugal Pump

Submittal Data # 301-1044
Supersedes: New

Effective: 09/01/03

Features

Compact Design: Close-Coupled design saves space and simplifies maintenance and installation.

Superior Materials of Construction: Complete AISI 304 Stainless Steel housing for corrosion resistance, smooth flow path, quality appearance, and improved strength and ductility.

Installation Flexibility: Can be mounted horizontally or vertically.

High efficiency Impeller: Enclosed impeller of precision molded Noryl with ultra-smooth flow ports maximizes performance and efficiency.

Mechanical Seal: Standard carbon on ceramic seal faces with Viton elastomers. Optional seal faces and elastomers are available to handle a variety of working fluids.

Motors: Rugged ball bearing design NEMA standard open drip proof or totally enclosed, fan cooled motors are available for continuous duty under all operating conditions.

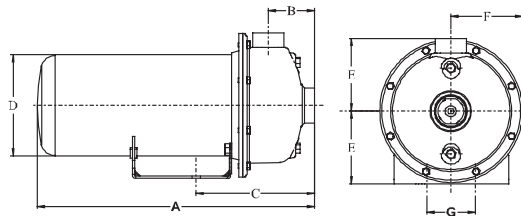
Drain/Vent Ports: Stainless steel vent and drain ports facilitate priming and draining the pump.

Application

Specifically designed for a broad range of general applications traditionally requiring various materials such as all iron, bronzed fitted or all bronze construction. Water circulation, booster service, liquid transfer, jockey pumps, OEM applications, general water services.

Pump Dimensions & Weights

Model	HP	Pump Size-NPT		A				B	C	D		E	F	G	Weight	
		Suct.	Disch.	1 Phase		3 Phase				ODP	TEFC					
				ODP	TEFC	ODP	TEFC									
SCX1700-1	1/2	1-1/4"	1	13.2	14.0	13.5	14.2	2.43	6.51	5.63	6.44	4.13	4.06	4.875	29	32
SCX1700-1	3/4	1-1/4"	1	13.2	14.9	13.5	14.2	2.43	6.51	5.63	6.44	4.13	4.06	4.875	38	41
SCX1700-1	1	1-1/4"	1	14.2	15.7	14.0	15.2	2.43	6.51	5.63	6.44	4.13	4.06	4.875	47	50
SCX1700-1	1-1/2	1-1/4"	1	14.5	16.2	14.5	15.2	2.43	6.51	5.63	6.44	4.13	4.06	4.875	62	65
SCX1700-2	2	1-1/2"	1-1/4"	16.0	16.4	15.7	16.4	2.63	6.71	5.63	6.44	4.13	4.06	4.875	77	80
SCX1700-2	2-1/2	1-1/2"	1-1/4"	16.9	16.9	16.4	16.4	2.63	6.71	5.63	6.44	4.13	4.06	4.875	90	93



Motor Horsepower	Motor Voltage	Phase	Max Amperage
1/2	115/230	1	8.8/4.4
	208/230/460	3	2.3/1.15
3/4	115/230	1	12.2/6.1
	208/230/460	3	3.1/1.55
1	115/230	1	14.8/7.4
	208/230/460	3	3.6/1.8
1-1/2	115/230	1	19.2/9.6
	208/230/460	3	4.7/2.35
2	230	1	12
	208/230/460	3	6.8/3.4
2-1/2	230	1	12
	208/230/460	3	8.5/4.25

Specifications

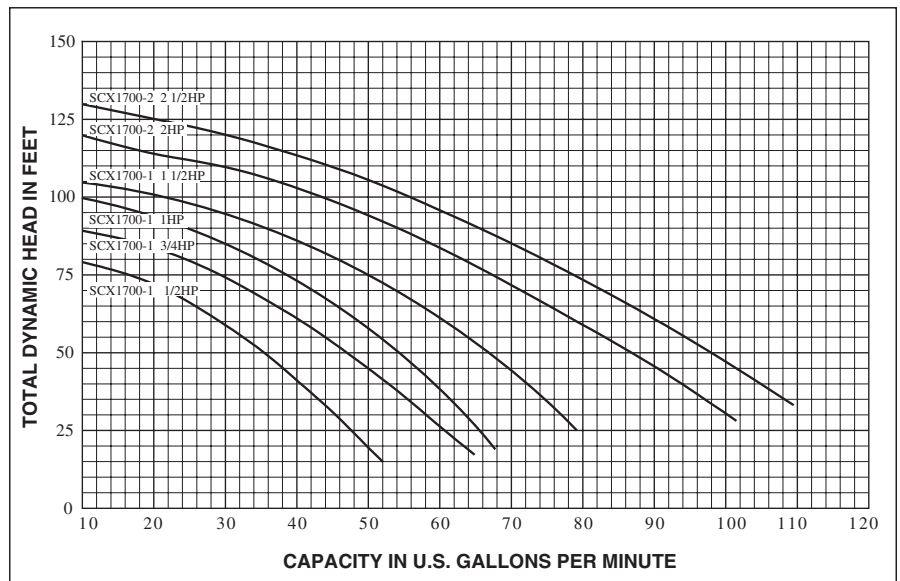
Capacities:	100 GPM
Heads:	135 Ft. TDH
Working Pressures:	125 psig
Max temp:	185° F (85° C)
Direction of rotation:	Clockwise when viewed from the motor end
Motors:	NEMA 56J Frame 1/2 - 3 HP
	Single phase - Voltage 115/230 VAC ODP and TEFC
	Three phase - Voltage 208-230/460 VAC ODP and TEFC

Note: Overload protection must be provided. Contactor with overload for 1-phase or starters with heaters for 3-phase units ordered separately.



**UL & CSA Listed
FOR INDOOR USE ONLY**

Performance Curve



HYDRONIC COMPONENTS & SYSTEMS

Do it once.
Do it right.™ **Taco**®

Taco Inc., 1160 Cranston Street, Cranston, RI 02920 / (401) 942-8000 / Fax (401) 942-2360
Taco (Canada) Ltd., 6180 Ordan Drive, Mississauga, Ontario L5T 2B3 / (905) 564-9422 / Fax (905) 564-9436
www.taco-hvac.com