



Submittal Data Information

301-1044

SCX1700 Stainless Steel Close-Coupled Centrifugal Pump (1/2 to 2 1/2 HP)

Effective: January 1, 2001

Supersedes: September 15, 1994

Job: _____ Engineer: _____ Contractor: _____ Rep: _____

ITEM NO.	MODEL NO.	IMP. DIA.	G.P.M.	HEAD/FT.	H.P.	ELEC. CHAR.



SPECIFICATIONS

- **Capacities to:**
100 GPM
- **Heads to:**
135 feet TDH
- **Working pressures to:**
125 PSIG
- **Maximum temperatures to:**
185°F (85°C)
- **Direction of rotation:**
Clockwise when viewed from the motor end
- **Motors:**
NEMA 56J Frame, 1/2 through 3 HP
Single phase
Voltage 115/230 VAC ODP and TEFC
Three phase
Voltage 208-230/460 VAC ODP and TEFC

NOTE: Overload protection must be provided. Contactor with overload for 1-phase or starters with heaters for 3-phase units ordered separately.

FEATURES

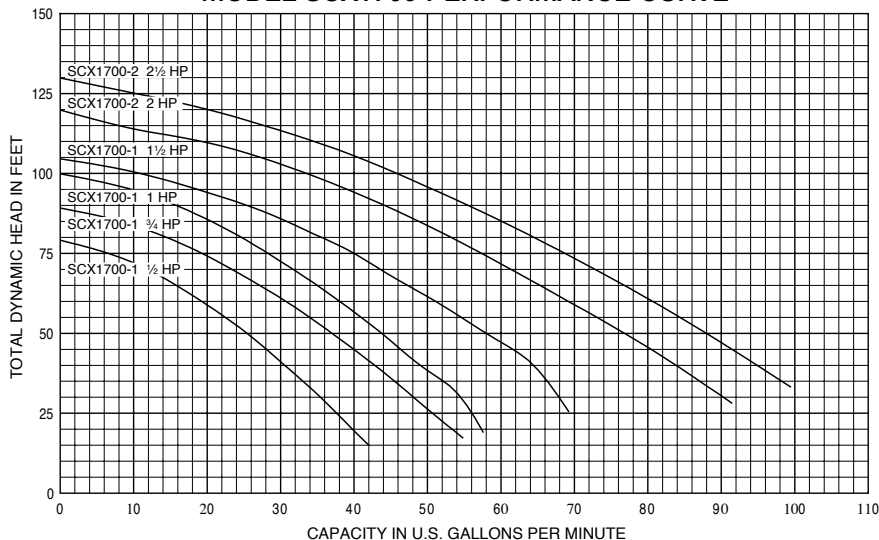
- **Compact Design:** Close-coupled design saves space and simplifies maintenance and installation.
- **Superior Materials of Construction:** Complete AISI 304 Stainless Steel housing for corrosion resistance, smooth flow path, quality appearance, and improved strength and ductility.
- **Installation Flexibility:** Can be mounted horizontally or vertically.
- **High Efficiency Impeller:** Enclosed impeller of precision molded Noryl with ultra-smooth flow ports maximizes performance and efficiency.
- **Mechanical Seal:** Standard carbon on ceramic seal faces with Viton elastomers. Optional seal faces and elastomers are available to handle a variety of working fluids.
- **Motors:** Rugged ball bearing design NEMA standard open drip proof or totally enclosed, fan cooled motors are available for continuous duty under all operating conditions.
- **Drain/Vent Ports:** Stainless steel vent and drain ports facilitate priming and draining the pump.

APPLICATIONS

Specifically designed for a broad range of general applications traditionally requiring various materials such as all iron, bronze fitted or all bronze construction.

- Water circulation
- Booster service
- Liquid transfer
- Jockey pumps
- OEM applications
- General water services

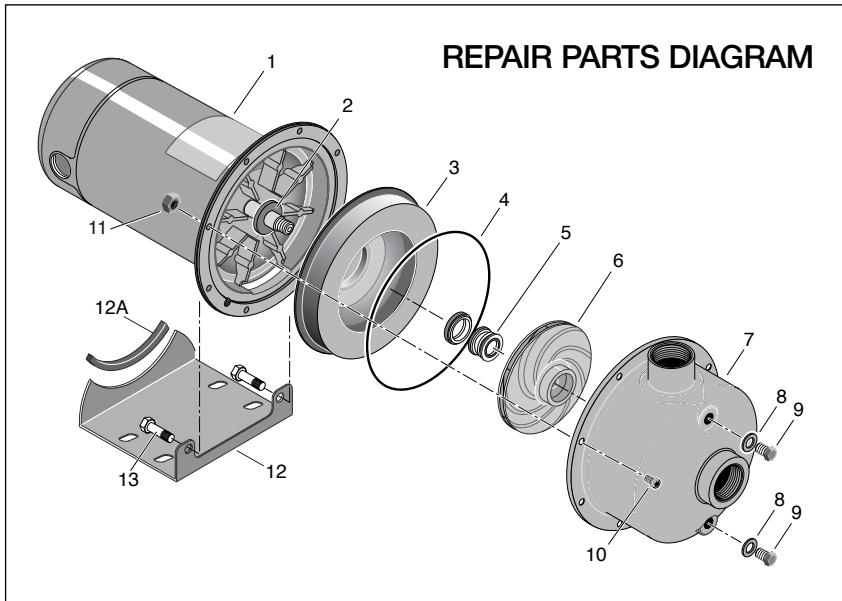
MODEL SCX1700 PERFORMANCE CURVE



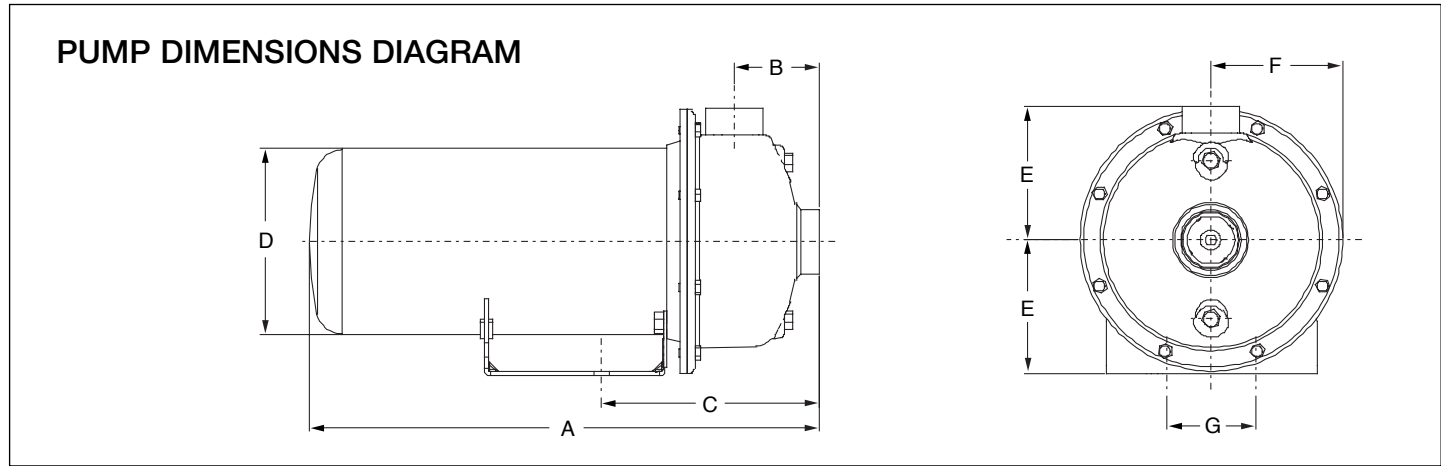
MATERIALS OF CONSTRUCTION

PART NO.	PARTS DESCRIPTION	NO. USED	MATERIALS OF CONSTRUCTION
1	Motor *	1	
2	Water Slinger	1	Neoprene
3	Seal Plate	1	AISI 304 SS
4	O-ring	1	Viton
5	Shaft Seal	1	See Table
6	Impeller	1	Noryl
	Impeller Screw (3 phase motors only)	1	18-8 SS
7	Casing/Diffuser Assembly	1	AISI 304 SS
8	Plug Gasket	2	Nylon
9	Stainless Steel Plug	2	AISI 304 SS
10	Socket Head Capscrew	8	18-8 SS
11	Nut, M6 x 1	8	18-8 SS
12	Base	1	Painted Steel
12A	Motor Pad	1	Natural Rubber
13	Capscrews, 3/8" - 16 x 3/4"	2	Zinc Coated Steel

* For repair of service to motors, always give the motor Model Number and any other data found on the Motor Model Plate.



Mechanical Seal John Crane Type 21					
Seal Number	Rotary	Stationary	Elastomers	Metal Parts	Casing O-Ring
0	Carbon	Ceramic	Buna-N	18-8 SS	Buna-N
3		Ceramic	Viton	18-8 SS	Viton
5		Silicon Carbide	Viton	18-8 SS	Viton



PUMP DIMENSIONS & WEIGHTS (DIMENSIONS IN INCHES)

MODEL	HP	PUMP SIZE-NPT		A				B	C	D		E	F	G	WEIGHT	
		SUCT.	DISCH.	1 PHASE		3 PHASE				ODP	TEFC				ODP	TEFC
				ODP	TEFC	ODP	TEFC									
SCX1700-1	1/2	1 1/4	1	13.2	14.0	13.5	14.2	2.43	6.51	5.63	6.44	4.13	4.06	4.875	29	32
SCX1700-1	3/4	1 1/4	1	13.2	14.9	13.5	14.2	2.43	6.51	5.63	6.44	4.13	4.06	4.875	38	41
SCX1700-1	1	1 1/4	1	14.2	15.7	14.0	15.2	2.43	6.51	5.63	6.44	4.13	4.06	4.875	47	50
SCX1700-1	1 1/2	1 1/4	1	14.5	16.2	14.5	15.2	2.43	6.51	5.63	6.44	4.13	4.06	4.875	62	65
SCX1700-2	2	1 1/2	1 1/4	16.0	16.4	15.7	16.4	2.63	6.71	5.63	6.44	4.13	4.06	4.875	77	80
SCX1700-2	2 1/2	1 1/2	1 1/4	16.9	16.9	16.4	16.4	2.63	6.71	5.63	6.44	4.13	4.06	4.875	90	93

Do it Once. Do it Right.

Taco, Inc., 1160 Cranston Street, Cranston, RI 02920 Telephone: (401) 942-8000 Fax: (401) 942-2360
 Taco (Canada), Ltd., 6180 Ordan Drive, Mississauga, Ontario L5T 2B3 Telephone: (905) 564-9422 Fax: (905) 564-9436

Visit our website at: www.taco-hvac.com

Printed in USA
 Copyright 2005
 TACO, Inc.