

### Model 003 Cartridge Circulator

The compact Taco 003 Cartridge Circulator is designed for circulating hot and chilled fresh water in open and closed loop, lower flow applications. Reduces erosion, corrosion and flow noise in shorter pipe run systems. Its unique, field-serviceable cartridge contains all moving parts. Replacing the cartridge rebuilds the circulator. With no mechanical seal, the self-lubricating, maintenance free design provides quiet, efficient operation and unmatched reliability. Available in low lead Bronze or Stainless Steel construction with Sweat, Threaded or Union connections.



**NSF® ≤ .25% Lead**

Meets California AB 1953  
and Vermont Act 193



# Submittal Data Information Model 003 Cartridge Circulator

Submittal Data # 101-061

Effective: 04/22/10

Supersedes: 09/01/03

## Features

- Reduces Erosion, Corrosion and Flow Noise in shorter pipe run applications
- Standard High Capacity Output-Compact Design
- Quiet, Efficient Operation
- Direct Drive-Low Power Consumption
- Unique Replaceable Cartridge Design-Field Serviceable
- Self Lubricating
- No Mechanical Seal
- Unmatched Reliability-Maintenance Free
- Low lead Bronze or Stainless Steel construction with Sweat, Threaded or Union Connections

## Materials of Construction

Casing (Volute):	Low lead Bronze or Stainless Steel
Stator Housing:	Steel
Cartridge:	Stainless Steel
Impeller:	Non-Metallic
Shaft:	Ceramic
Bearings:	Carbon
O-Ring & Gaskets:	EPDM

## Model Nomenclature

B	- Bronze, 3/4" Sweat
BC	- Bronze, 1/2" Sweat, Panel Mount Tappings
ST	- Stainless Steel, 3/4" Threaded
BC-I	- Bronze, Union, Panel Mount Tappings

## Performance Data

Flow Range: 0 – 7 GPM  
 Head Range: 0 – 4.5 Feet  
 Minimum Fluid Temperature: 40°F (4°C)  
 Maximum Fluid Temperature: 220°F (104°C)  
 Maximum Working Pressure: 125 psi  
 Connection Sizes: 1/2" Swt, 3/4" Swt, 3/4" NPT, or Union



**FOR INDOOR USE ONLY**

NSF® ≤ .25% lead

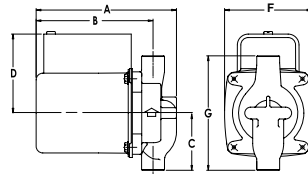
Complies with California Health and Safety Code Section 116875 / AB1953 and Vermont Act 193

## Application

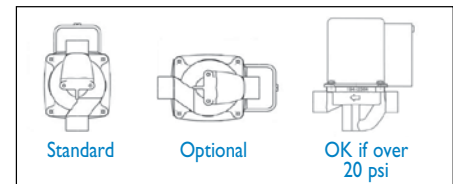
The Taco 003 is designed for circulating hot or chilled fresh water in open or closed loop, lower flow applications. Flow characteristics are ideal for Domestic Hot Water Recirculation, Heat Recovery units, Water Source Heat Pumps, and Potable Water systems. The unique, replaceable cartridge contains all of the moving parts and allows for easy service instead of replacing the entire circulator. The compact, low power consumption design is ideal for high efficiency jobs.

## Pump Dimensions & Weights

Model	Conn	A		B		C		D		F		G		Ship Wt.	
		in.	mm	in.	mm	in.	mm	in.	mm	in.	mm	in.	mm	lbs.	Kg
003-B4	3/4" Swt	5-1/8	130	4-1/8	105	2-3/16	56	3-1/16	78	3-5/16	84	4-13/32	112	6.0	2.7
003-BC4	1/2" Swt	5-1/8	130	4-1/8	105	2-1/8	54	3-1/16	78	3-5/16	84	4-1/4	108	6.0	2.7
003-ST4	3/4" NPT	5-5/8	143	4-7/8	124	2	51	3-1/16	78	3-5/16	84	4	102	6.0	2.7
003-BC4-I	Union	5-5/32	131	4-11/32	110	2-31/32	76	3-1/16	78	3-5/16	84	5-15/16	151	6.0	2.7



## Mounting Positions



## Electrical Data

Model	Volts	Hz	Ph	Amps	RPM	HP
003 All Models	115	60	1	.43	3250	1/40
Motor Type	Permanent Split Capacitor Impedance Protected					
Motor Options	220/50/1, 220/60/1, 230/60/1, 100/110/50/60/1					

## Performance Field - 60Hz

