



# Submittal Data Information

101-061

## Model 003 Cartridge Circulator

Effective: April 22, 2010

Supersedes: September 1, 2003

Job: \_\_\_\_\_ Engineer: \_\_\_\_\_ Contractor: \_\_\_\_\_ Rep: \_\_\_\_\_

ITEM NO.	MODEL NO.	IMP. DIA.	G.P.M.	HEAD/FT.	H.P.	ELEC. CHAR.

### Features

- Reduces Erosion, Corrosion and Flow Noise in shorter pipe run applications
- Standard High Capacity Output-Compact Design
- Quiet, Efficient Operation
- Direct Drive-Low Power Consumption
- Unique Replaceable Cartridge Design-Field Serviceable
- Self Lubricating
- No Mechanical Seal
- Unmatched Reliability-Maintenance Free
- Low lead Bronze or Stainless Steel construction with Sweat, Threaded or Union Connections

### Materials of Construction

Casing (Volute): Low lead Bronze or Stainless Steel  
 Stator Housing: Steel  
 Cartridge: Stainless Steel  
 Impeller: Non-Metallic  
 Shaft: Ceramic  
 Bearings: Carbon  
 O-Ring & Gaskets: EPDM

### Model Nomenclature

B - Bronze, 3/4" Sweat  
 BC - Bronze, 1/2" Sweat, Panel Mount Tappings  
 ST - Stainless Steel, 3/4" Threaded  
 BC-I - Bronze, Union, Panel Mount Tappings

### Performance Data

Flow Range: 0 – 7 GPM  
 Head Range: 0 – 4.5 Feet  
 Minimum Fluid Temperature: 40°F (4°C)  
 Maximum Fluid Temperature: 220°F (104°C)  
 Maximum Working Pressure: 125 psi  
 Connection Sizes: 1/2" Swt, 3/4" Swt, 3/4" NPT, or Union



NSF® ≤ .25% lead

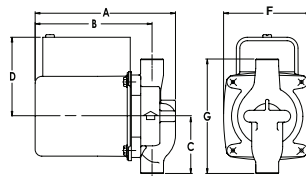
Complies with California Health and Safety Code Section 116875 / AB1953 and Vermont Act 193

### Application

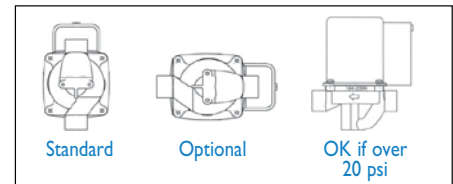
The Taco 003 is designed for circulating hot or chilled fresh water in open or closed loop, lower flow applications. Flow characteristics are ideal for Domestic Hot Water Recirculation, Heat Recovery units, Water Source Heat Pumps, and Potable Water systems. The unique, replaceable cartridge contains all of the moving parts and allows for easy service instead of replacing the entire circulator. The compact, low power consumption design is ideal for high efficiency jobs.

### Pump Dimensions & Weights

Model	Conn	A		B		C		D		F		G		Ship Wt.	
		in.	mm	in.	mm	in.	mm	in.	mm	in.	mm	in.	mm	lbs.	Kg
003-B4	3/4" Swt	5-1/8	130	4-1/8	105	2-3/16	56	3-1/16	78	3-5/16	84	4-13/32	112	6.0	2.7
003-BC4	1/2" Swt	5-1/8	130	4-1/8	105	2-1/8	54	3-1/16	78	3-5/16	84	4-1/4	108	6.0	2.7
003-ST4	3/4" NPT	5-5/8	143	4-7/8	124	2	51	3-1/16	78	3-5/16	84	4	102	6.0	2.7
003-BC4-I	Union	5-5/32	131	4-11/32	110	2-31/32	76	3-1/16	78	3-5/16	84	5-15/16	151	6.0	2.7



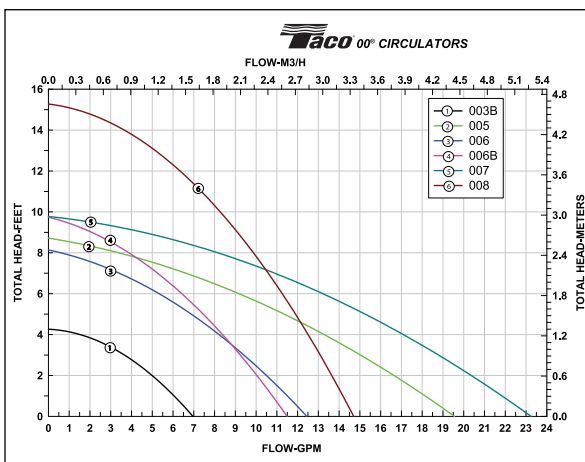
### Mounting Positions



### Electrical Data

Model	Volts	Hz	Ph	Amps	RPM	HP
003 All Models	115	60	1	.43	3250	1/40
Motor Type	Permanent Split Capacitor Impedance Protected					
Motor Options	220/50/1, 220/60/1, 230/60/1, 100/110/50/60/1					

### Performance Field - 60Hz



**Do it Once. Do it Right.®**

TACO INC., 1160 Cranston Street, Cranston, RI 02920 Telephone: (401) 942-8000 Fax: 942-2360  
 TACO (Canada), Ltd., 6180 Ordan Drive, Mississauga, Ontario L5T 2B3 Telephone: (905) 564-9422 Fax: (905) 564-9436  
 Visit our website at: www.taco-hvac.com

Printed in USA  
 Copyright 2010  
 TACO, Inc.