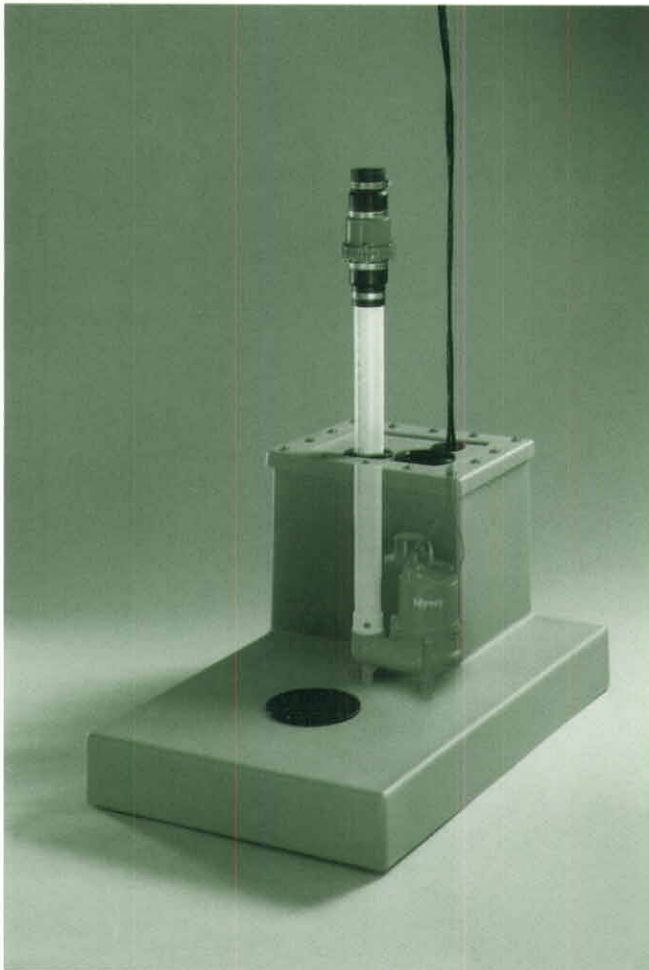


MRJ

Ready Jon System Sewage Ejector Pump Up Package



READY JON SYSTEM INCLUDES:

- SRM4S-1 (115V) 4/10 HP sewage pump
- Myers Poly tank
- 2" check valve/discharge piping assembly

For more information on the Ready Jon System, call your Myers distributor or the Myers Ohio sales office at 419-289-1144.

ADVANTAGES BY DESIGN

- Ideal for basements, room additions, factories and warehouses.
- Simple installation.
- Accommodates toilet, vanity, humidifier or shower.
- Fits nearly anywhere.
- Use with almost any toilet style.
- Concrete floor stays intact. No need to destroy flooring since the Ready Jon can be installed free standing on top of any level surface.
- Tank and piping can be hidden behind a wall.

PUMP PERFORMANCE

Capacities To	95 gpm	360 lpm
Heads To	18 ft.	5.5 m
Solids Handling Capacity	2 in.	50.8 mm
Intermittent Liquid Temp.	up to 140°F	up to 60°C
Motor	4/10 HP	
Electrical	115V, 12A, 1Ø, 60 Hz.	
Discharge, NPT	2 in.	50.8 mm

Pump Construction Materials

Motor Housing	cast iron, Class 30, ASTM A48
Volute Case	cast iron, Class 30, ASTM A48
Impeller	recessed, thermoplastic
Power Cord	10 ft. 16/3 SJTW/SJTW-A
Mechanical Seal	carbon and ceramic

Tank Construction Materials

Tank	polyethylene gray finish
------	-----------------------------

WHERE INNOVATION MEETS TRADITION

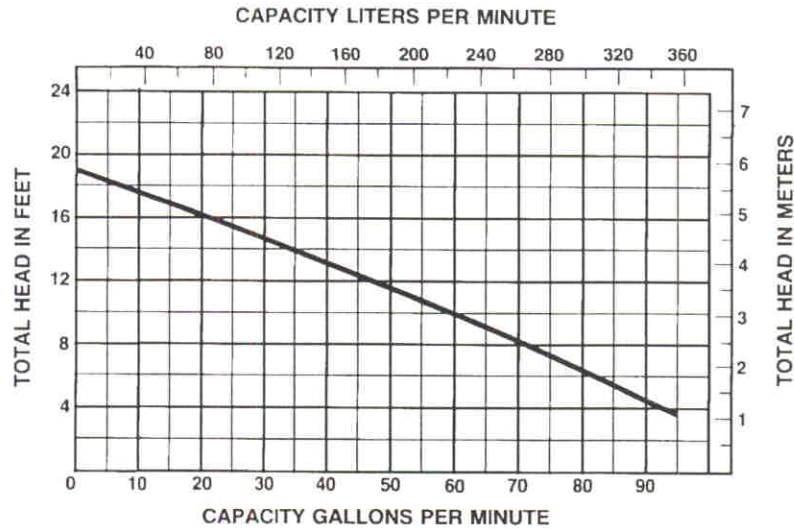
Myers®

Pentair Pump Group

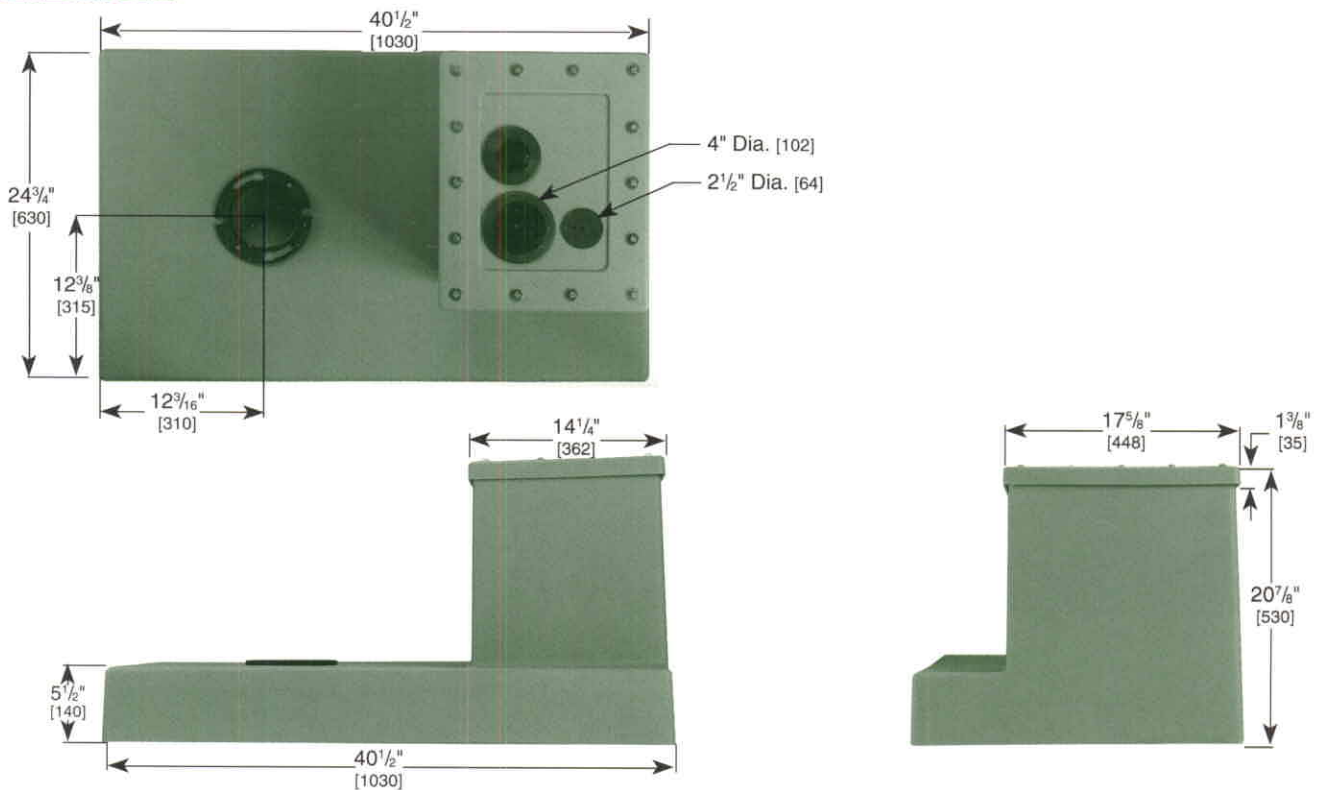
MRJ

Ready Jon System Sewage Ejector Pump Up Package

PERFORMANCE DATA



DIMENSIONS



K4061 3/01
Printed in U.S.A.



Myers[®]
Pentair Pump Group

F. E. Myers, 1101 Myers Parkway, Ashland, Ohio 44805-1969
419/289-1144, FAX: 419/289-6658, www.femyers.com

Myers (Canada), 269 Trillium Drive, Kitchener, Ontario N2G 4W5
519/748-5470, FAX: 519/748-2553