

## HIGH TEMPERATURE EFFLUENT PUMPS

### S40HT SERIES

The Myers<sup>®</sup> S40HT series effluent pump is a small, rugged, submersible, cast iron pump with a non-clog vortex impeller and solids handling capability to 3/4". Unit has 1/3 HP, 115 Volt, single-phase motor and 1-1/2" NPT vertical discharge. Available with high temperature float switch.

#### APPLICATIONS

Boiler blow down pits, condensate pits, hot water sumps

#### SPECIFICATIONS

- Capacities – 45 GPM (170 LPM)
- Shut-off Head – 21' (6.4 m)
- Operation – S40HT-11P  
On: 13.5" (343 mm); Off: 4.5" (114 mm)
- Operation – Manual and automatic
- Solids Handling – 3/4" (19 mm)
- Liquids Handling – High temperature liquids
- Intermittent Liquid Temperature –  
S40HT-11P: up to 194°F (90°C)  
S40HT-11: up to 200°F (93°C)
- Motor/Electrical Data – 1/3 HP, 12.0A, thermal overload protection, oil-filled, 115V, 1Ø, 60Hz, 1550 RPM
- Acceptable pH Range – 6-9
- Mechanical Seal – Type 6A or equal, Buna-N elastomers, carbon and ceramic sealing faces, stainless steel metal parts
- Bearings – Lower ball, upper sleeve type, oil lubricated
- Housing/Volute Case/Impeller – Cast iron
- Exterior Hardware – Stainless steel
- Power Cord – 20', 16/3, SJ00W-A/SJOW with integrally grounded three-prong plug
- Discharge, NPT – 1-1/2" (38.1 mm)
- Minimum Sump Diameter –  
Simplex: 18" (45.7 cm);  
Duplex: 30" (76.2 cm)



#### FEATURES

##### Cast Iron Tough

All cast-iron housing, volute case, and impeller resists the most extreme corrosive environments

##### Rugged and Cool

Rugged-built, oil-filled motor for continuous bearing lubrication and maximum heat dissipation

##### Thermal Protection

Heat sensor overload protection with automatic reset when motor cools to a safe operating temperature

##### Longer-lasting Motor

Lower ball bearing eliminates sleeve bearing wear and reduces motor wear

##### Impeller

Non-clog vortex style, ejector vanes for seal protection

##### Stainless Steel Hardware

Allows easy disassembly after extended service

##### Oil and Water Resistant Cord Design

Prevents oil loss from – and moisture protection for – motor

##### Bearings and Mechanical Seal –

Permanently lubricated for long life

##### Easy Service – Heavy-duty lift-out ring

In order to provide the best products possible, specifications are subject to change. Myers<sup>®</sup> is a registered trademark of Pentair Water.



**Myers**<sup>®</sup>

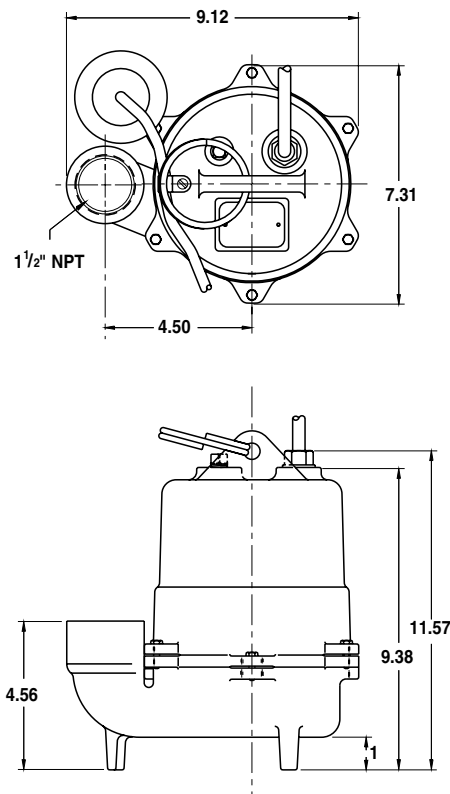
Pentair Water

**HIGH TEMPERATURE EFFLUENT PUMPS**

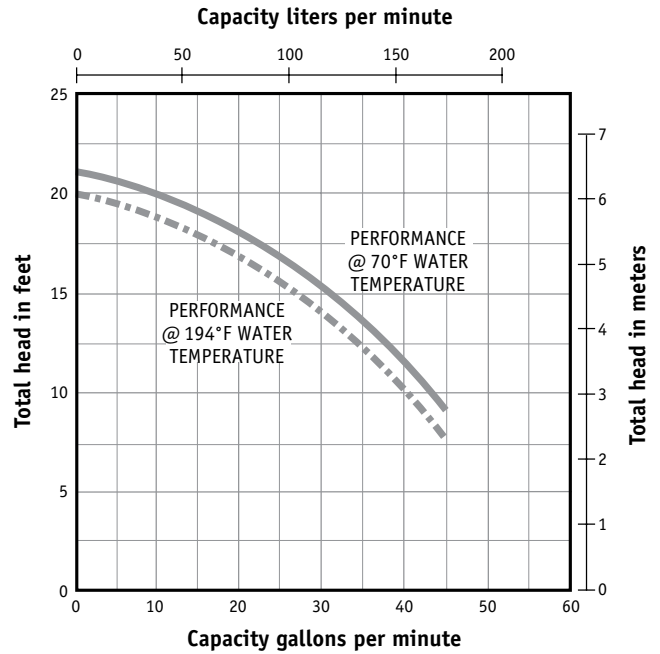
**ORDERING INFORMATION**

Catalog Number	HP	Volts	Phase/Cycles	Amps	Discharge Size	Switch Type	Cord Length	Approx. Wt. Lbs.
S40HT-11	1/3	115	1/60	12.0	1-1/2"	Manual	20'	36
S40HT-11P	1/3	115	1/60	12.0	1-1/2"	Tethered	20'	36

**DIMENSIONS**



**PUMP PERFORMANCE**



Myers | Customer Service: 888.987.8677 | Fax Orders: 888.840.7867 | www.myerspump.com | Form No. M9188SSE (7/09)

Canada | Phone: 519.748.5470 | Fax: 519.748.2553