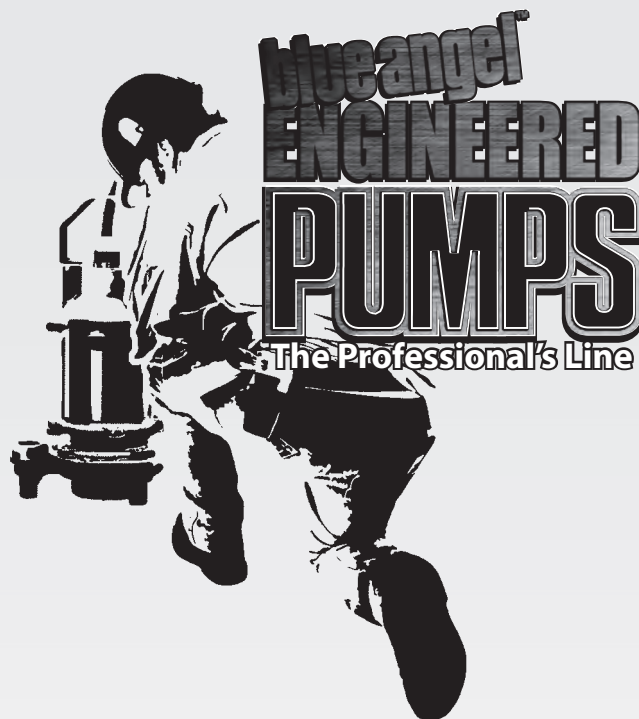


2 HP GRINDER PUMP BAHGP2 Series

THE BEAST



blueangel
ENGINEERED
PUMPS
The Professional's Line



- Patented High Head, Double Stage Impeller Design
- Doubled Output Pressure, with Unmatched Performance
- PERFORMANCE

BAHGP2-2021, 2021C - 250' Shut Off Head - Flows to 30 GPM

BAHGP2-2023 - 265' Shut Off Head - Flows to 33 GPM

BAHGP2-2021E1 - 143' Shut Off Head - Flows to 28 GPM

- Ideal for Long Discharge Runs or High Static Heads
- Heavy Duty Upper and Lower Ball Bearings

CUTTER ASSEMBLY

Hardened 440C Stainless Steel (56-60 Rockwell C) Shredding Ring and Grinding Impeller - 13,800 Cuts Per Second - 830,000 Cuts Per Minute

IMPELLER

Two Bronze Castings for Superior Quality and Long Life
Recessed (Vortex) Design Reduces Bearing Load / Increases Bearing Life and Prevents Clogging

SHAFT SEALS

Dual Mechanical Seal (Silicon/Carbide)

MOTOR

Capacitor Start/Run Design for Assured Starting, Strong Torque and Grinding Under Heavy Load

Utilizes A Low Voltage, Stress-Free Electronic Start Switch
Pressed Stator for Precise Shaft / Bearing Alignment, Long Life
Internal Overload Automatic Protection

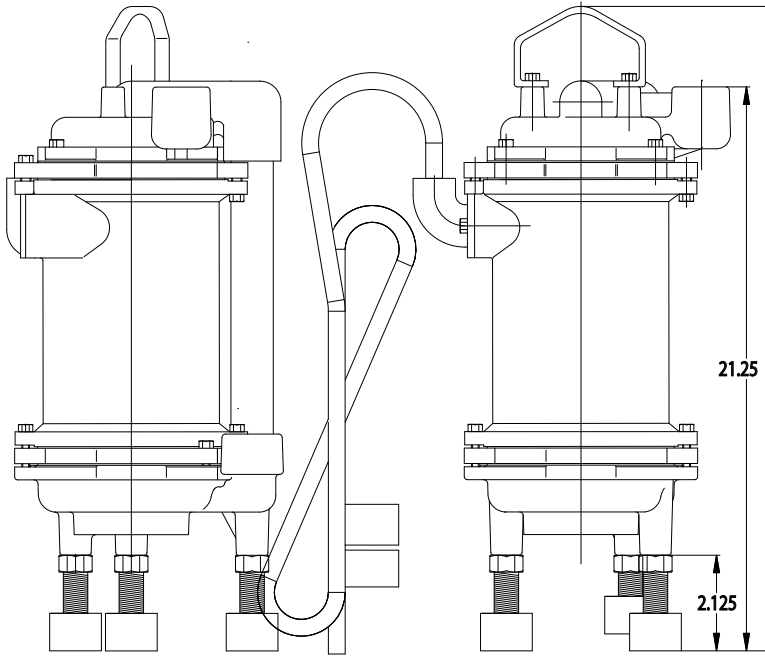
Dual Ball Bearings

Oil-Filled For Consistant Bearing Lubrication and Maximum Motor Cooling

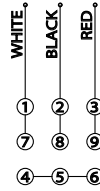
1 YEAR
Warranty

www.blueangelpumps.com

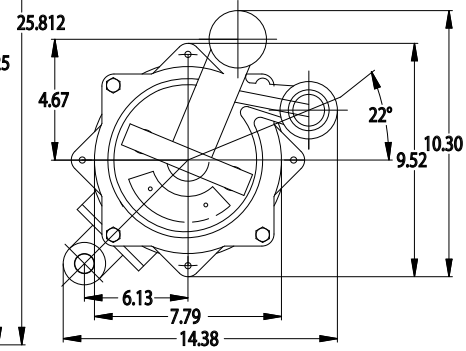
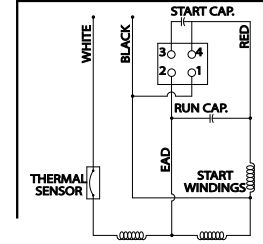
DIMENSIONAL DATA



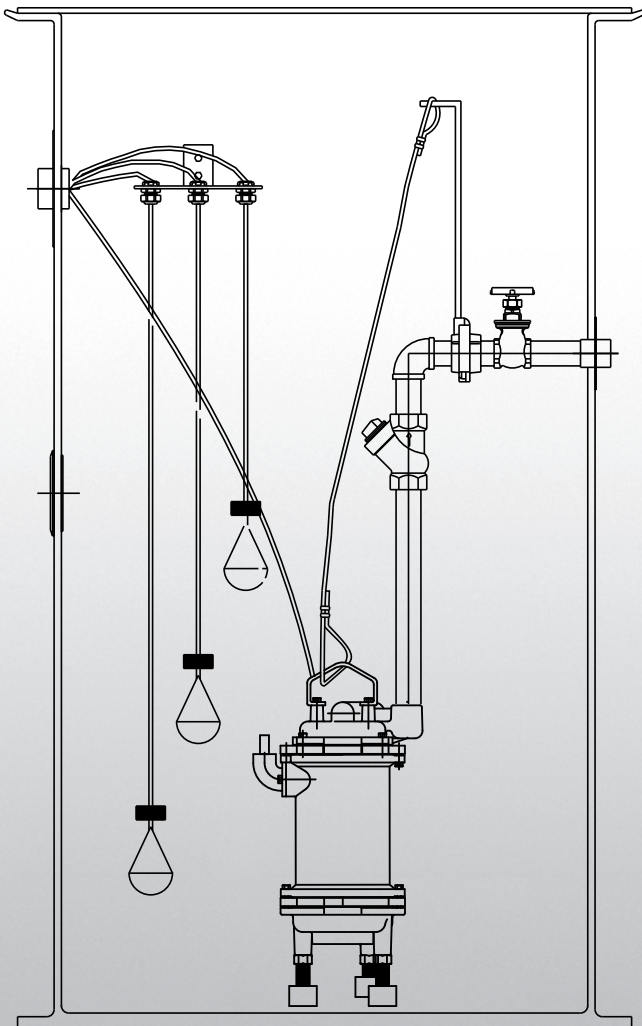
BAHGP2-2023



BAHGP2-2021 BAHGP2-2021C BAHGP2-2021E1



TYPICAL INSTALLATION

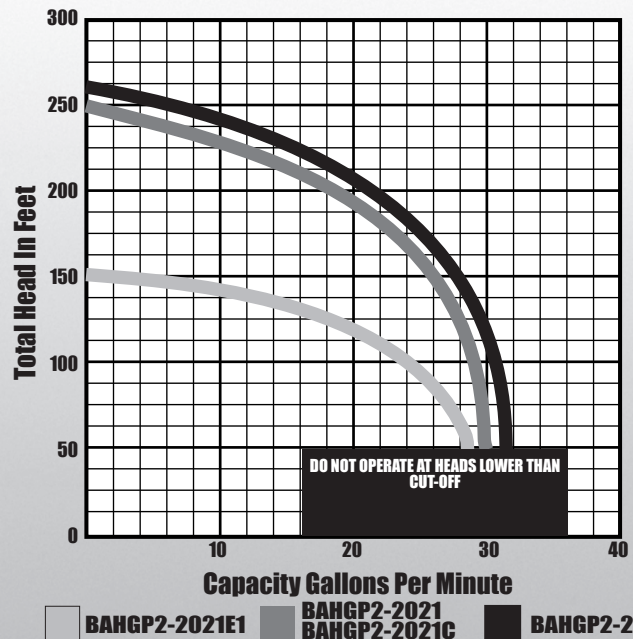


MOTOR SPECIFICATIONS

MODEL	HP	PHASE	VOLTS	AMPS	Hz
BAHGP2-2021	2	1	230	24	60
BAHGP2-2021C	2	1	230	24	60
BAHGP2-2021E1	2	1	230	16	60
BAHGP2-2023	2	3	230	16	60

PERFORMANCE GPM

DISCHARGE HEAD	50'	100'	150'	200'	250'
BAHGP2-2021	30	29	27	20	0
BAHGP2-2021C	30	29	27	20	0
BAHGP2-2021E1	28	20	0	-	-
BAHGP2-2023	33	32	30	22	6



LIFTING BAIL

- For Balanced Load and Easy Lifting

CABLE ENTRY

- Triple Seal Protection - Compression Fitting Sealed Secondary Epoxy Sealed - Soldered Conductors Prevent Wicking - Simple Threaded Design For Easy Servicing

SECOND STAGE

- Bronze Impeller - Cast Iron Volute

CAST IRON CONSTRUCTION

OIL-FILLED MOTOR HOUSING

- Maintains Cool Operation - Continuous Bearing Lubrication Even Temperature Distribution - Eliminates Hot Spots

HIGH TORQUE MOTOR

- 2 HP - 3450 RPM - Strong Starting/Grinding - Class F Windings - Cool Operating - Pressed Stator Construction for Maximum Heat Dissipation

BALL BEARINGS

- Dual (Upper and Lower) - Supports Grinder Loads - 50,000 Hour B-10 Life

SHAFT SEALS

- Dual Construction - Mechanical (Silicon Carbide) - Secondary Lip Seal

STAINLESS STEEL SHAFT

- 416 Stainless Steel

IMPELLER

- Ductile Iron Cast Bronze - Clog-Free - Recessed Design - Pump-Out Vanes Keep Seal Clean and Reduces Pressure At Seal Face

GRINDER ASSEMBLY

- 440C Stainless Steel Hardened to 56-60 Rockwell C. - Easy Bottom Servicing - No Dismantling of Pump Required - 13,800 Cuts Per Second

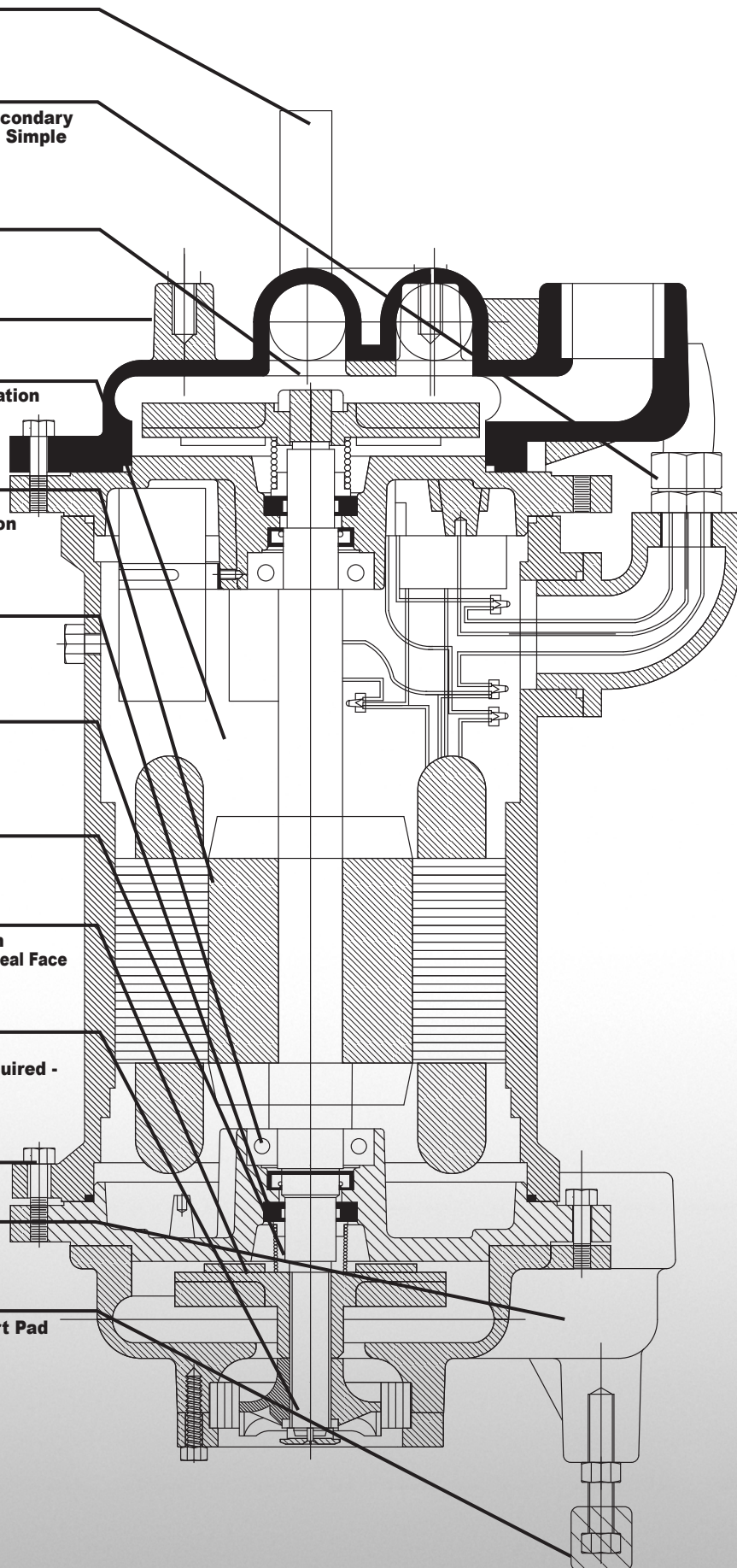
STAINLESS STEEL FASTENERS

CAST IRON VOLUTE CASE

- 1-1/4" NPT Discharge

LEG EXTENSIONS

- Threaded Leg Castings (sst) with Molded Buna Support Pad



2 HP GRINDER PUMP

BAHGP2 Series



BAHGP2-2021

- 230 Volt
- Single Phase
- Shipping Weight, 139 lbs
- 1 Year Warranty



BAHGP2-2021C

- 230 Volt
- Single Phase
- Internal Starting Components
- Shipping Weight, 139 lbs
- 1 Year Warranty

BAHGP2-2021E1

- 230 Volt
- Single Phase
- Shipping Weight, 139 lbs
- 1 Year Warranty

BAHGP2-2023

- 230 Volt
- Three Phase
- Shipping Weight, 139 lbs
- 1 Year Warranty

DISCHARGE	1-1/4" NPT, Vertical
LIQUID TEMPERATURE	120 Degrees F (Maximum)
MOTOR HOUSING	Cast Iron, ASTM A-48, Class 30
CORD CAP	Cast Iron, ASTM A-48, Class 30
VOLUTE	Cast Iron, ASTM A-48, Class 30
SEAL PLATE	Cast Iron, ASTM A-48, Class 30
IMPELLER	Ductile Iron
	10 Vane, Vortex with Pump-Out Vanes, Dynamically Balanced
SHREDDING RING	Hardened 440C Stainless Steel, 50-60 Rockwell C
GRINDER IMPELLER	Hardened 440C Stainless Steel, 50-60 Rockwell C
SHAFT	416 Stainless Steel
SHAFT SEAL	(PRIMARY) Mechanical, (SECONDARY) Lip Seal
	Silicon - Rotating Face Silicon - Rotating Face
	Carbide - Stationary Face Carbide - Stationary Face
	Buna-N - Elastomer
BEARING (UPPER)	300 Series Stainless Steel - Hardware
BEARING (LOWER)	Single Row, Ball, Oil Lubricated
HARDWARE	Single Row, Ball, Oil Lubricated
GASKETS	300 Series Stainless Steel
CORD	Buna-N
	UL/C (UL) Listed 14 AWG, Type SJOW or SOOW, 20' Cord
	Length Standard, Other Lengths Available
CORD ENTRY	Triple Sealed Design
	Compression Grommet - Outer Jacket Seal
	Epoxy Potted - Inner Conductor Seal
MOTOR (SINGLE PHASE)	Butt Connector - Inner Wire Strand Wicking Blockage
	2 HP, 3450 RPM, 60 Hz, Automatic Overload Protection in
	the Motor, Oil-Filled, Class F, Capacitor Start/Capacitor Run
Start Capacitor	200 mfd, 250 VAC
Run Capacitor	70 mfd, 250 VAC
Start Switch	Stearns 477104012401
MOTOR (Three PHASE)	2 HP, 3450 RPM, 60 Hz, Dual Voltage 230/460V, Requires
	Overload Protection in the Control Panel, Oil-Filled, Class F

FOR PUMP AND SYSTEM ACCESSORIES SEE ACCESSORIES SECTION

BLUE ANGEL™ ENGINEERED PUMPS • 101 Production Drive • Harrison, OH 45030 • 1-888-636-6628

© 2007 Blue Angel Pumps All Rights Reserved