



Oil Smart® Water Pump Switch Pumps Water Only, Will Not Pump Hydrocarbons

The Oil Smart® Pump Controller is a stand-alone pump controller requiring no expensive electrical panels, will operate any pump up to and including a 1HP. All models include built-in ON and OFF differential of 2.5" or 6". An industrial grade switch that differentiates between oil and water, with any pump application used to control pumps in elevator, utility, marine and industrial sump applications. Installation will help prevent hydrocarbons from inadvertently being pumped into the environment and oil will not harm or contaminate this capacitive technology. The Oil Smart® Switch can be an integral part of the pump assembly or a stand-alone component wired to the pump or a control valve.

TECHNICAL DATA:

Operating Voltages and **Model #:**

Wayne Water Model #15455:

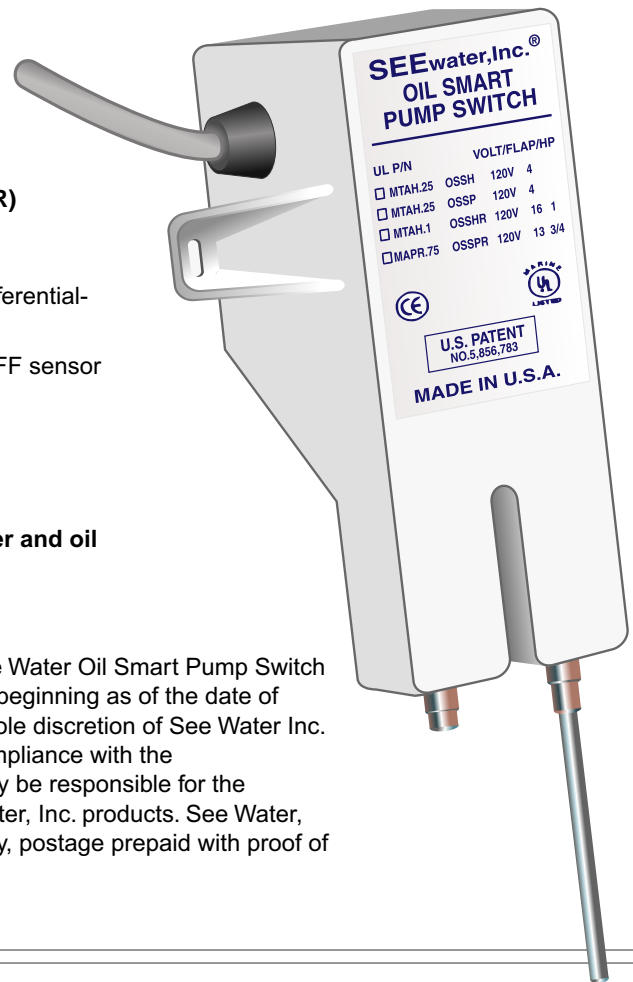
MAPR.75 120VAC 50/60 Hz. 13Amp 3/4 HP PLUG (OSS20PBPR)

Oil Smart® pump controller with 20' cord, bracket and 6" or 2.5" differential-ON & OFF SENSORS.

- Dimensions: 2.50" Wide x 6" High x 1.75" Deep plus 2.5" or 6" OFF sensor
- Magnetic Motor Controls UL508 **UL Certified File E183129**
- Listed Industrial Control Equipment
- Completely Encapsulated & Water Tight
- CE Certified
- **A solid-state sensing device that differentiates between water and oil**
- **Incorporates two level sense points, pump ON, pump OFF.**

WARRANTY:

- Oil Smart® Pump Switch, SEE Water® Inc. warrants that the See Water Oil Smart Pump Switch will be free from defects in material and workmanship for a period beginning as of the date of purchase for two (2) years. Replacement of the switch only at the sole discretion of See Water Inc. This warranty is valid only when the product is installed in strict compliance with the manufacturer's installation instructions. SEEwater, Inc. will in no way be responsible for the reliability of any pump that is connected to or operates with SEEwater, Inc. products. See Water, Inc. will replace the switch when it is returned to See Water's factory, postage prepaid with proof of original purchase included.



www.seewaterinc.com
or www.oilsmart.org

951.487.8073 • 888.733.9283

Email: info@seewaterinc.com

121 North Dillon Street • San Jacinto, CA 92583

P.O. Box 1269 • San Jacinto, CA 92581

Fail-Safe Technology since 1995.

SEE WATER
Inc.
"OIL SMART" Water Pump Switches

OIL SMART® WATER PUMP SWITCH

OIL SMART® SWITCH AND PUMP INSTALLATION:

CAUTION: YOU MUST REMOVE ANY FLOAT SWITCH THAT IS CURRENTLY IN USE OR SUPPLIED BY PUMP MANUFACTURER. IF PUMP HAS MANUAL/AUTO SET, SWITCH TO MANUAL.

Installation of the Oil Smart® water pump switch allows you to comply with State and Federal regulations while reducing the risk of adverse publicity, fines and expensive cleanup costs. The Oil Smart® water pump switch prevents inadvertently pumping oil contaminated waste into the environment, improves the reliability of your electric system and provides a safe, dry work environment for your employees.

FUSING:

Follow the pump manufacturer's instructions. Do not exceed the Oil Smart® switch amp rating. **A portable device may not be attached to a permanent structure.**

THE INITIAL INSTALLATION:

should be in a clean environment, clear of mud and all metallic debris. The switch should be installed where the water intrusion will not directly contact or splash the switch body.

Mud and other **conductive** materials left on the body of the switch will hamper its operation. Effort must be taken to **clean the switch** prior to leaving initial installation.

CLEAN STRUCTURE:

requires minimum switch maintenance for a trouble-free operation. Install the switch so that on and off sensors clear any metallic material (earth, mud, concrete and all metals) by a minimum of 2".

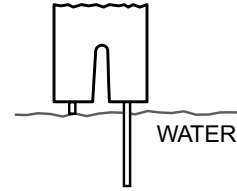
SWITCH MAINTENANCE:

The white plastic case must be clean of any conductive materials (dirt, soap or rust). Clean with alcohol.

OPERATION:

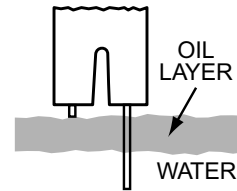
Normal Condition (Water Only)

The short sensor probe turns the pump "on" and the long sensor probe turns the pump "off". When the short sensor is in contact with water, the pump will continue to cycle "on and off" until the short sensor detects oil.



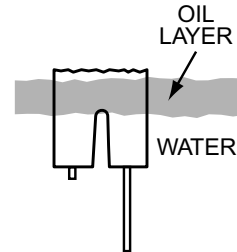
Oil Present Condition

The pump will not cycle if oil is in contact with the short sensor.

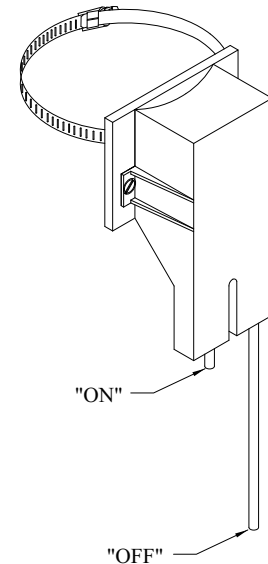
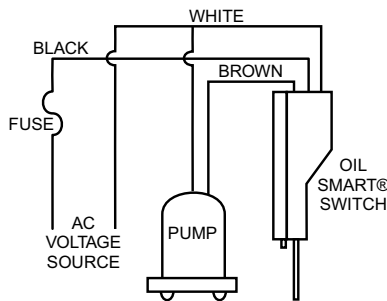


High Water (Oil Present Condition)

If additional water enters the basin, it will cause the oil layer to rise above the short sensor, resulting in the pump cycling.



WIRING DIAGRAM



www.seewaterinc.com or www.oilsmart.org

951.487.8073 • 888.733.9283 • Email: info@seewaterinc.com

121 North Dillon Street • San Jacinto, CA 92583

P.O. Box 1269 • San Jacinto, CA 92581

Printed in U.S.A.

Fail-Safe Technology since 1995.

SEE WATER Inc. 
"OIL SMART" Water Pump Switches

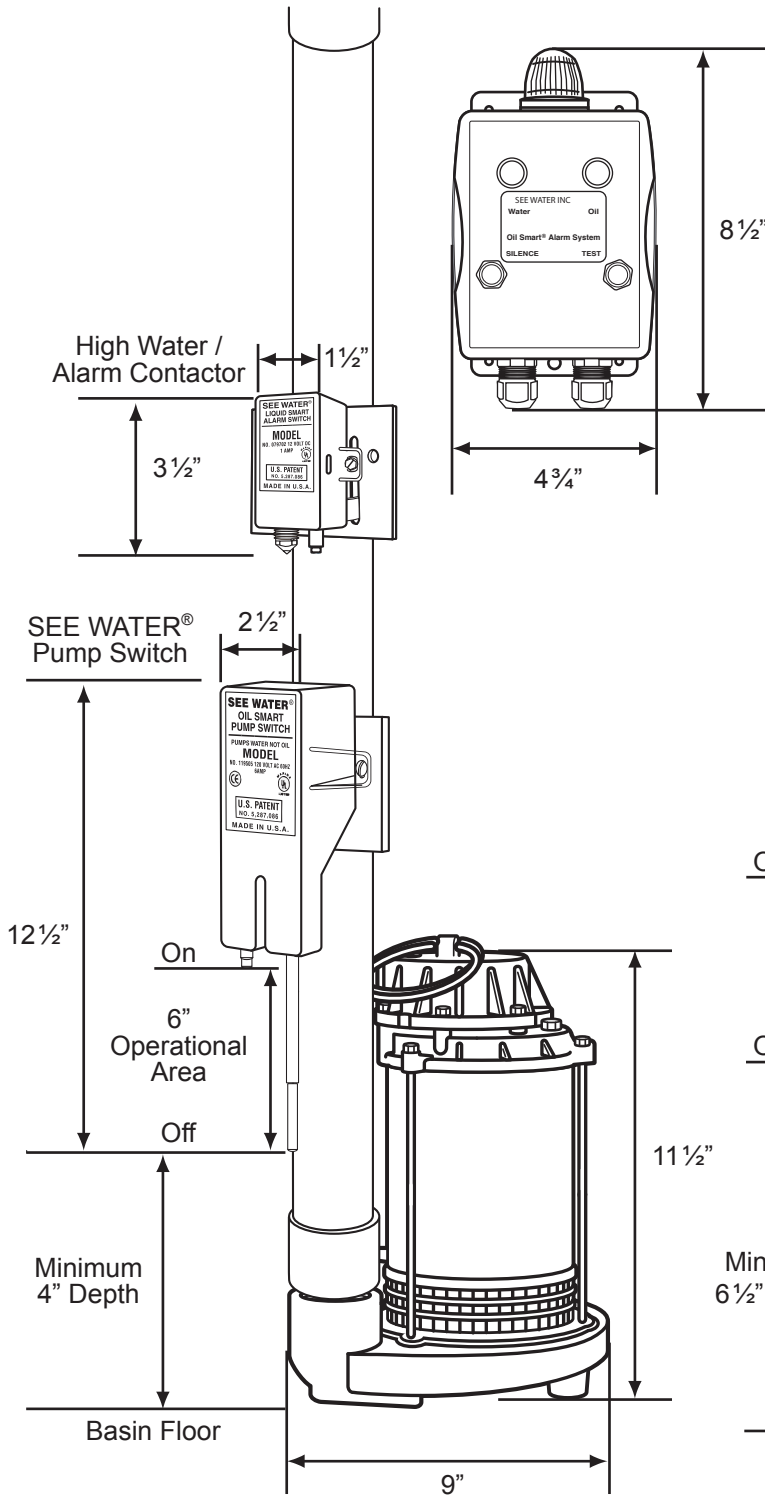
Oil Smart® Switch

Trouble Free Operation

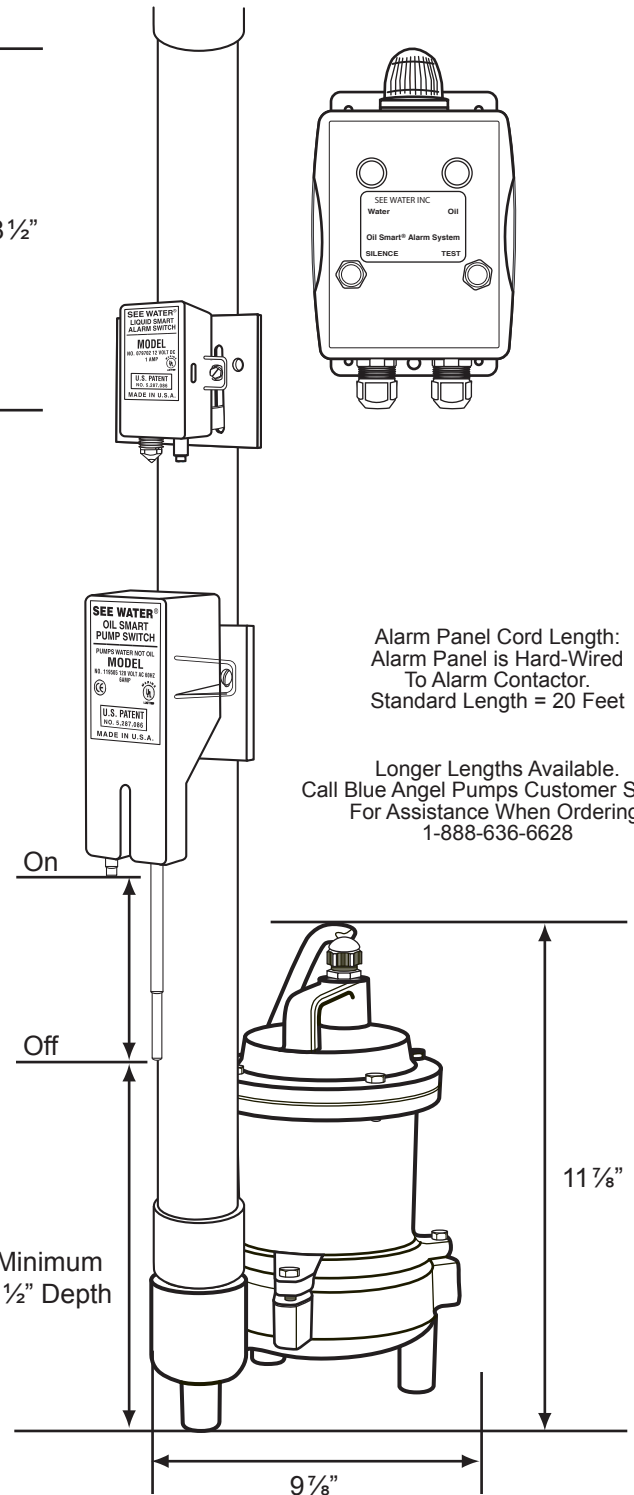
1. Plastic Switch case **must** be **kept clean**. Free of: rust, mud, soap, etc. If switch is submerged in water during initial installation, switch **must be cleaned**.
2. **Clean** with Alcohol or an oil base product: kerosene, solvent.
3. Pumps with an attached float switch, **Float switch must be removed or secured in manual operation** before attaching the Oil Smart® switch.
4. Mount switch in secure manner to: pump PVC pipe, do not mount to metallic material.
5. Mount in sump clear of water inlet keeping switch case clean & dry as possible.
6. Keep bottom of long sensor at least two inches above pump inlet (Impellor).
7. Keep sensors one to two inches (1 to 2”) clear of any metallic material.
8. Switch will not function with incorrect polarity (**Polarity Sensitive**).
9. Supply voltage: 115AC and 240AC For European model.
10. Pump turns on when water covers long and short rod.
11. Test switch: to simulate water, place thumb and finger on sensor rods let go of short rod and firmly slide finger down long rod, switch will turn off when finger is clear of long rod.

Blue Angel High Water / Oil Alarm
 Model ODS10 - 1/3 HP SSBCSM33
 Model ODS20 - 1/2 HP SSBCSM50

Blue Angel High Water / Oil Alarm - High Head
 Model ODS30 - 1/2 HP BALE521A (230 Volts)
 or BALE511A (115 Volts)



ODS10 and ODS20
 Min. Basin Depth = 20"
 Min. Basin Width = 14"



ODS30
 Min. Basin Depth = 22 1/2"
 Min. Basin Width = 14"

Alarm Panel Cord Length:
 Alarm Panel is Hard-Wired
 To Alarm Contactor.
 Standard Length = 20 Feet

Longer Lengths Available.
 Call Blue Angel Pumps Customer Service
 For Assistance When Ordering:
 1-888-636-6628