

Please read and save these instructions. Read carefully before attempting to assemble, install, operate or maintain the product described. Protect yourself and others by observing all safety information. Failure to comply with instructions could result in personal injury and/or property damage! Retain instructions for future reference.

Submersible Utility Pump

Description

This portable, submersible utility pump is designed for non-automatic use in water. The units are equipped with a 9 ft. 3-prong grounding type power cord. The discharge fitting is designed for convenient attachment to a garden hose.

Unpacking

Inspect this unit before it is used. Occasionally, products are damaged during shipment. If the pump or components are damaged, return the unit to the place of purchase for replacement. Failure to do so could result in serious injury or death.

READ & FOLLOW ALL INSTRUCTIONS
SAVE THESE INSTRUCTIONS
DO NOT DISCARD

Safety Guidelines

This manual contains information that is very important to know and understand. This information is provided for SAFETY and to PREVENT EQUIPMENT PROBLEMS. To help recognize this information, observe the following symbols.

⚠ DANGER Danger indicates an imminently hazardous situation which, if not avoided, WILL result in death or serious injury.

⚠ WARNING Warning indicates a potentially hazardous situation which, if not avoided, COULD result in death or serious injury.

⚠ CAUTION Caution indicates a potentially hazardous situation which, if not avoided, MAY result in minor or moderate injury.

NOTICE Notice indicates important information, that if not followed, may cause damage to equipment.

NOTE: Information that requires special attention.

General Safety Information

CALIFORNIA PROPOSITION 65

⚠ WARNING This product or its power cord may contain chemicals, including lead, known to the State of California to cause cancer and birth defects or other reproductive harm. Wash hands after handling.

GENERAL SAFETY

- Read all manuals included with this product carefully. Be thoroughly familiar with the controls and the proper use of the equipment. Follow all instructions.
- Only persons well acquainted with these rules of safe operation should be allowed to use the unit.



⚠ DANGER Do not pump flammable or explosive fluids such as gasoline, fuel oil, kerosene, etc. Do not use in a flammable and/or explosive environment. Pump only clear water. Personal injury and/or property damage will result.



⚠ DANGER Risk of electric shock! This pump has not been tested for use in swimming pool and marine areas. Never place pump in pools while people are in the water.



⚠ DANGER Do not handle pump with wet hands or when standing in water or on a damp surface.



⚠ DANGER Risk of electric shock! This pump is supplied with a grounding conductor and grounding type attachment plug. Use a grounded (GFCI) receptacle to reduce the risk of fatal electrical shock.



1. Wear safety glasses at all times when working with pumps.



2. It is required that this unit be plugged into a Ground Fault Circuit Interrupter (GFCI). Consult a local electrician for installation and availability.
3. Do not use the power cord or discharge hose to carry or handle the pump. Damage to the power cord or discharge hose may occur. Use the handle supplied on the pump.

Installation and Operation

⚠ DANGER Always disconnect electric supply before attempting to install, service, relocate or perform any maintenance. If the power source is out of sight, lock and tag in open (off) position to prevent unexpected power application. Failure to do so could result in fatal electrical shock!



⚠ WARNING This unit is not designed for use in septic tanks or underground vaults to pump raw sewage or effluents. Never use in hazardous or explosive locations.



1. This pump has been designed with 1-1/4 NPT discharge size. Connect pipe or fitting to the discharge threads or connect the supplied garden hose elbow fitting to the pump. Thread the female end of the garden hose to the male discharge on the pump.
2. To reduce leakage between the pump and the hose, place a hose washer (not included) on the garden hose before installing to the pump.

REMINDER: Keep your dated proof of purchase for warranty purposes! Attach it to this manual or file it for safekeeping.

Installation and Operation (Continued)

3. For best pump performance, unwind the hose before starting the pump. This will help remove any kinks or binds in the hose and allow the unit to pump with less restriction.

4. Set the pump on a hard, flat surface in the water. Do not set the pump directly on mud or sand surfaces. This will cause the inlet screen to clog.

5. The water level must be at least 1-1/2 inches for the pump to prime and operate.

Water levels less than 1-1/2 inches will not allow the impeller to contact water and no water will be pumped.

⚠ DANGER Do not handle pump with wet hands or when standing in water or on a damp surface when the unit is operating or fails to operate. Always disconnect pump power cord from power source before handling.



6. Plug the power cord into a grounded 115-volt GFCI power outlet. The pump will start operating as soon as the power cord is plugged into the power outlet.

7. The pump will remove water down to 1/2 inch above the hard surface the pump was placed on.

8. The pump should be turned off once the water level reaches the 1/2 inch mark.

NOTICE Do not allow pump to run dry. The shaft seal depends on water for lubrication. Operating pump without water will damage the shaft seal and cause pump failure.

Maintenance

⚠ DANGER Always disconnect electric supply before attempting to install, service, relocate or perform any maintenance. Failure to do so could result in fatal electrical shock.



Minimal service is required for this pump. If pump should fail to operate, perform the following troubleshooting guidelines:

1. The motor housing of the pump is completely sealed and requires no service.

⚠ DANGER Disassembly of the motor housing or alteration of the power cord could result in fatal electrical shock.



2. To verify pump is operating correctly.

- Disconnect pump from power source.
- Disconnect discharge hose from pump.
- Immerse pump in a bucket or tub of water.
- Plug power cord into a grounded 115 volt GFCI power outlet. If pump operates correctly proceed to step #3. If pump does NOT operate, unplug power cord and proceed to maintenance guideline item 4 in this section.

3. To verify discharge hose is free from any blockage.

a. Connect hose to another water source such as a faucet. If water flows through hose, proceed to step 3b. If water is restricted, verify discharge hose is unwound. Remove all kinks, bends or obstructions in hose.

b. Verify pumping height does NOT exceed 20 feet (See Figure 1). If pumping height is greater than 20 feet, this pump will NOT work.

4. Periodic cleaning of pump is required to maintain performance of the pump. Follow the cleaning steps listed below:

- Unplug the power cord.
- Remove the 4 screws in the bottom of the base (Reference No. 7 in diagram on page 3).
- Remove the base (Reference No. 7) and inlet plate (Reference No. 6)
- Remove the debris and make sure the impeller turns freely.
- Reinstall inlet plate, base and screws.

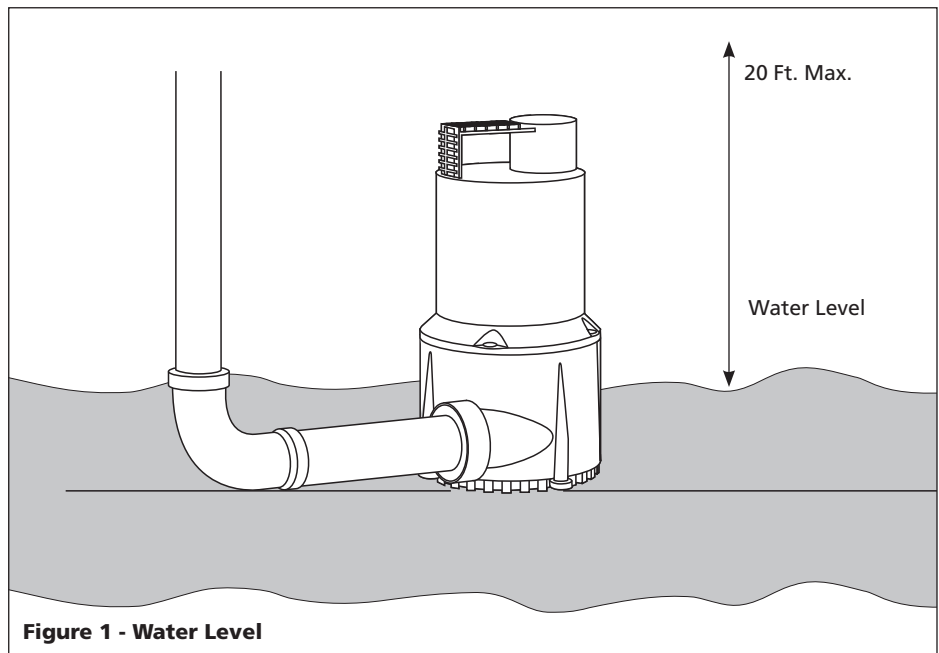


Figure 1 - Water Level

For Replacement Parts or Technical Assistance, call 1-866-636-6628

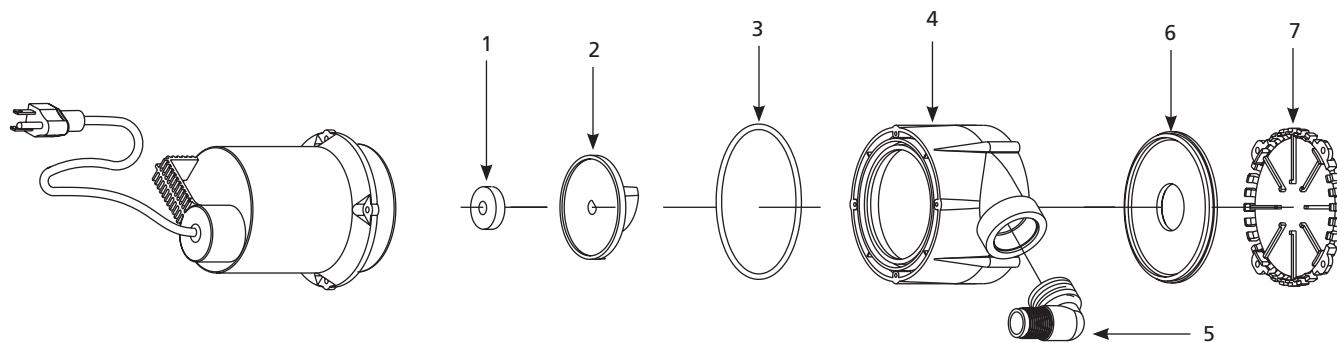
Please provide following information:

- Model number
- Serial number (if any)
- Part description and number as shown in parts list

Address parts correspondence to:

Blue Angel Pumps
101 Production Drive
Harrison, OH 45030 U.S.A.

Ref. No.	Description	BRUP160	Qty
1	Shaft seal	21208-001	1
2	Impeller	28099-001	1
3	O-ring	19047-001	1
4	Volute reducer fitting	28100-001	1
5	Elbow adapter	28101-001	1
6	Inlet plate	28102-001	1
7	Base	28103-001	1



Notes

One Year Limited Warranty

For one year from the date of purchase, Blue Angel™ Pumps will repair or replace, at its option, for the original purchaser any part or parts of its Sump Pumps or Water Pumps ("Product") found upon examination by Blue Angel™ to be defective in materials or workmanship. Please call Blue Angel™ (888-636-6628) for instructions or see your dealer. Be prepared to provide the model number and the serial number when exercising this warranty. All transportation charges on Products or parts submitted for repair or replacement must be paid by purchaser.

This Limited Warranty does not cover Products which have been damaged as a result of accident, abuse, misuse, neglect, improper installation, improper maintenance, or failure to operate in accordance with Blue Angel™'s written instructions.

THERE IS NO OTHER EXPRESS WARRANTY. IMPLIED WARRANTIES, INCLUDING THOSE OF MERCHANTABILITY AND FITNESS FOR A PARTICULAR PURPOSE, ARE LIMITED TO ONE YEAR FROM THE DATE OF PURCHASE. THIS IS THE EXCLUSIVE REMEDY AND ANY LIABILITY FOR ANY AND ALL INDIRECT OR CONSEQUENTIAL DAMAGES OR EXPENSES WHATSOEVER IS EXCLUDED.

Some states do not allow limitations on how long an implied warranty lasts, or do not allow the exclusions or limitations of incidental or consequential damages, so the above limitations might not apply to you. This limited warranty gives you specific legal rights, and you may also have other legal rights which vary from state to state.

In no event, whether as a result of breach of contract warranty, tort (including negligence) or otherwise, shall Blue Angel™ or its suppliers be liable for any special, consequential, incidental or penal damages including, but not limited to loss of profit or revenues, loss of use of the products or any associated equipment, damage to associated equipment, cost of capital, cost of substitute products, facilities, services or replacement power, downtime costs, or claims of buyer's customers for such damages.

You **MUST** retain your purchase receipt along with this form. In the event you need to exercise a warranty claim, you **MUST** send a **copy** of the purchase receipt along with the material or correspondence. Please call Blue Angel™ (888-636-6628) for return authorization and instructions.

DO NOT MAIL THIS FORM TO WAYNE. Use this form only to maintain your records.

MODEL NO. _____ SERIAL NO. _____ INSTALLATION DATE _____

ATTACH YOUR RECEIPT HERE