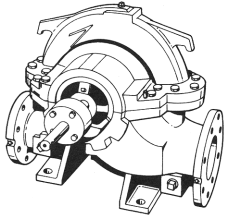


JOB:	REPRESENTATIVE:
UNIT TAG:	ORDER NO.
ENGINEER:	SUBMITTED BY:
CONTRACTOR:	APPROVED BY:
	DATE:
	DATE:
	DATE:



Series HSCS[®]

Model 100, Pump End Only

Double Suction with Mechanical Seals

SPECIFICATIONS

FLOW _____ HEAD _____

HP _____ RPM _____

APPROX. WEIGHT _____

SPECIALS _____

MATERIALS OF CONSTRUCTION

Cast Iron Bronze Fitted

TYPE OF SEAL

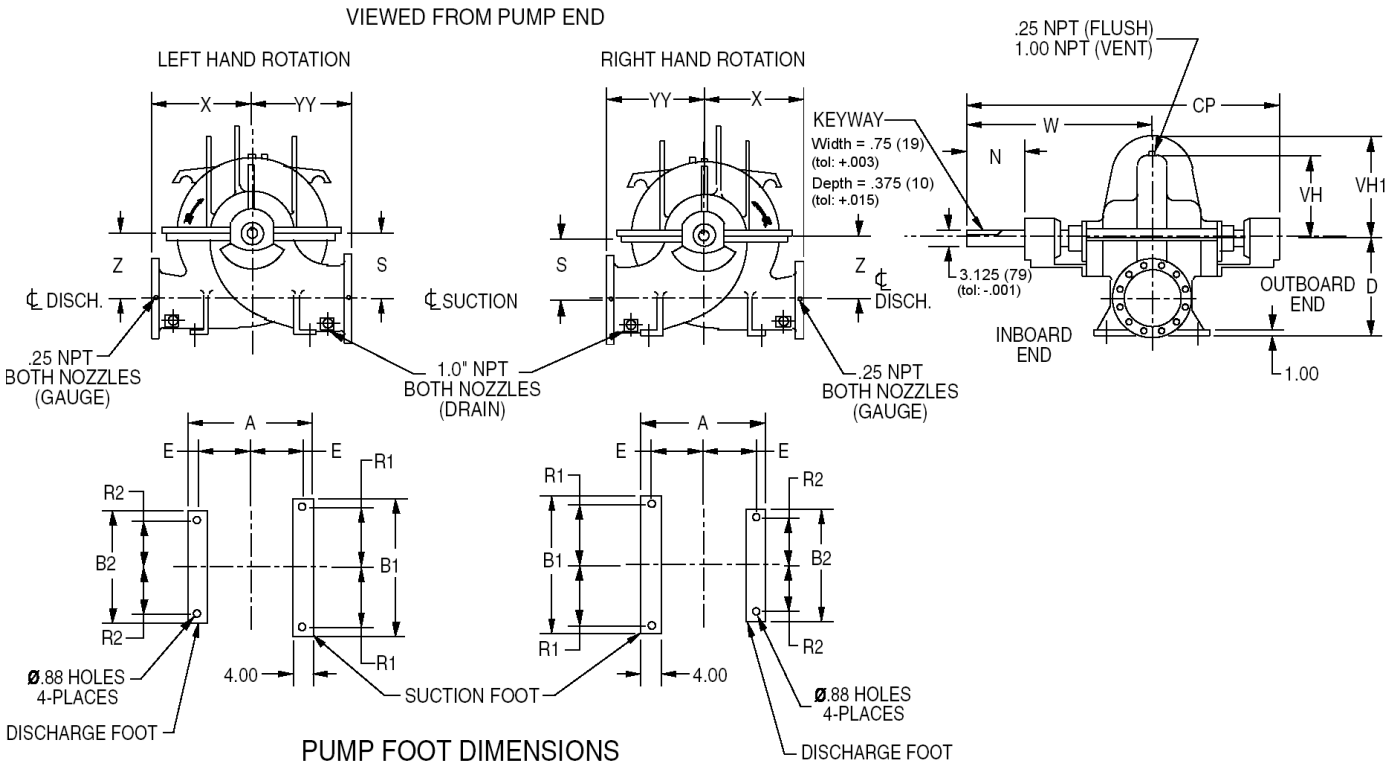
Pump Size: 10x14x20S, 10x14x20L, 12x16x23, 14x16x17, 14x18x23

- STANDARD: 175 PSIG (12 Bar) working pressure, 125# ANSI Flanges**
 - OPTIONAL: 300 PSIG (21 Bar) working pressure, 250# ANSI Flanges**
 - STANDARD:** Crane Type 8 - 1, Viton/Carbon-Ceramic, 75 psig (5 Bar) maximum suction pressure, from -10° to 220°F (-23 to 104 °C).
 - OPTIONAL:** Crane Type 8 - 1, Viton/Carbon-Tungsten Carbide, 75 psig (5 Bar) maximum suction pressure, from -10° to 220°F (-23 to 104 °C).
 - OPTIONAL:** Crane Type 8B - 1, Viton/Carbon-Ceramic, 200 psig (13 Bar) maximum suction pressure, from -10° to 220°F (-23 to 104 °C).
 - OTHER:**
-
-

TYPE OF SEAL

Pump Size: 8x12x22M, 8x12x22L

- STANDARD: 300 PSIG (21 Bar) working pressure, 125 / 250# ANSI Flanges**
 - OPTIONAL: 400 PSIG (27 Bar) working pressure, 250# ANSI Flanges**
 - STANDARD:** Crane Type 8 - 1, Viton/Carbon-Ceramic, 75 psig (5 Bar) maximum suction pressure, from -10° to 220°F (-23 to 104 °C).
 - OPTIONAL:** Crane Type 8 - 1, Viton/Carbon-Tungsten Carbide, 75 psig (5 Bar) maximum suction pressure, from -10° to 220°F (-23 to 104 °C).
 - OPTIONAL:** Crane Type 8B - 1, Viton/Carbon-Ceramic, 200 psig (13 Bar) maximum suction pressure, from -10° to 220°F (-23 to 104 °C).
 - OTHER:**
-
-



DIMENSIONS - Inches (mm)

PUMP SIZE	DISCH	SUCT	A	B ₁	B ₂	E	R ₁	R ₂	CP	D	N	S & Z	VH	VH ₁	W	X	YY
** 8X12X22	8.00 (203)	12.00 (305)	24.00 (610)	18.00 (457)	12.00 (305)	11.00 (280)	8.00 (203)	5.00 (127)	50.00 (1270)	19.00 (483)	6.81 (173)	12.00 (305)	15.25 (387)	19.88 (505)	28.25 (718)	21.00 (533)	21.00 (533)
10X14X20	10.00 (254)	14.00 (356)	24.00 (610)	24.00 (610)	16.00 (406)	11.00 (280)	11.00 (280)	7.00 (178)	54.25 (1378)	21.00 (533)	6.75 (171)	13.00 (330)	14.79 (376)	21.75 (553)	30.50 (775)	19.00 (483)	21.00 (533)
12X16X23	12.00 (305)	16.00 (406)	24.00 (610)	24.00 (610)	16.00 (406)	11.00 (280)	11.00 (280)	7.00 (178)	54.25 (1378)	23.00 (584)	6.75 (171)	14.00 (356)	17.70 (450)	25.88 (657)	30.50 (775)	25.00 (635)	25.00 (635)
14X16X17	14.00 (356)	16.00 (406)	24.00 (610)	24.00 (610)	16.00 (406)	11.00 (280)	11.00 (280)	7.00 (178)	54.25 (1378)	23.50 (597)	6.75 (171)	14.00 (356)	16.25 (413)	23.00 (584)	30.50 (775)	18.00 (457)	24.00 (610)
14X18X23	14.00 (356)	18.00 (457)	28.00 (711)	26.00 (660)	18.00 (457)	13.00 (330)	12.00 (305)	8.00 (203)	56.31 (1430)	24.00 (610)	6.81 (173)	14.00 (356)	18.00 (457)	23.62 (600)	31.56 (802)	27.00 (686)	27.00 (686)

Dimensions are subject to change. Not to be used for construction purposes unless certified.

NOTE: FLANGES ARE 125 #FF OR 250 #FF PER ANSI B16.1. HOLES STRADDLE CENTERLINES.
** STANDARD FLANGES ARE 125 #FF SUCTION AND 250 #FF DISCHARGE FOR THIS PUMP SIZE



Bell & Gossett

Bell & Gossett
8200 N. Austin Avenue, Morton Grove, IL 60053
Phone (847)966-3700
Facsimile (847)966-9052
www.bellgossett.com

