

Horizontal Split Case Base Mounted – Double Suction Pump Performance Curves

Bell & Gossett



SERIES HSC³ & HSC-S

TABLE OF CONTENTS

USEFUL PUMP FORMULAS	2
3500 RPM PUMP CURVES	3-4
1750 RPM PUMP CURVES	5-18
1150 RPM PUMP CURVES	19-32

USEFUL PUMP FORMULAS

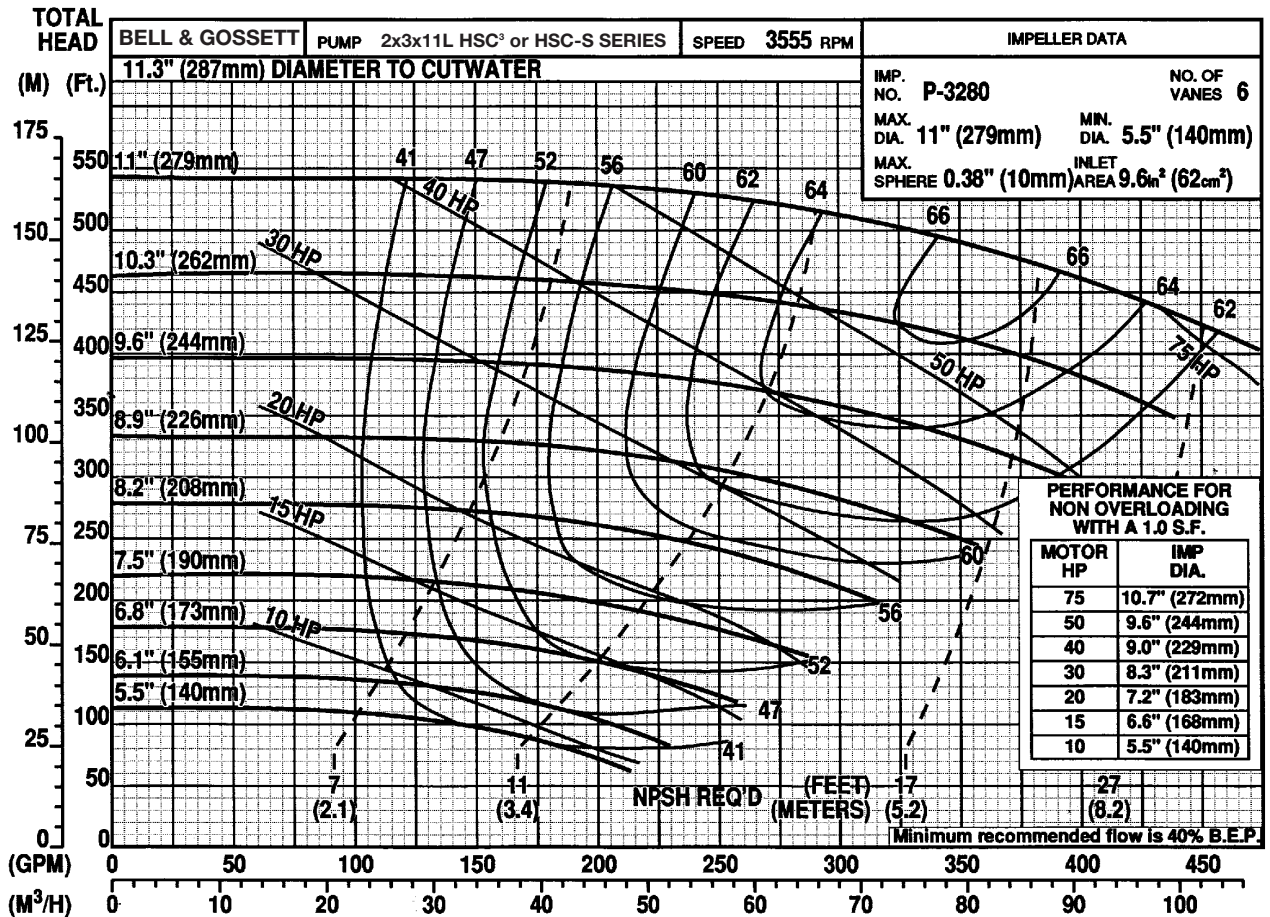
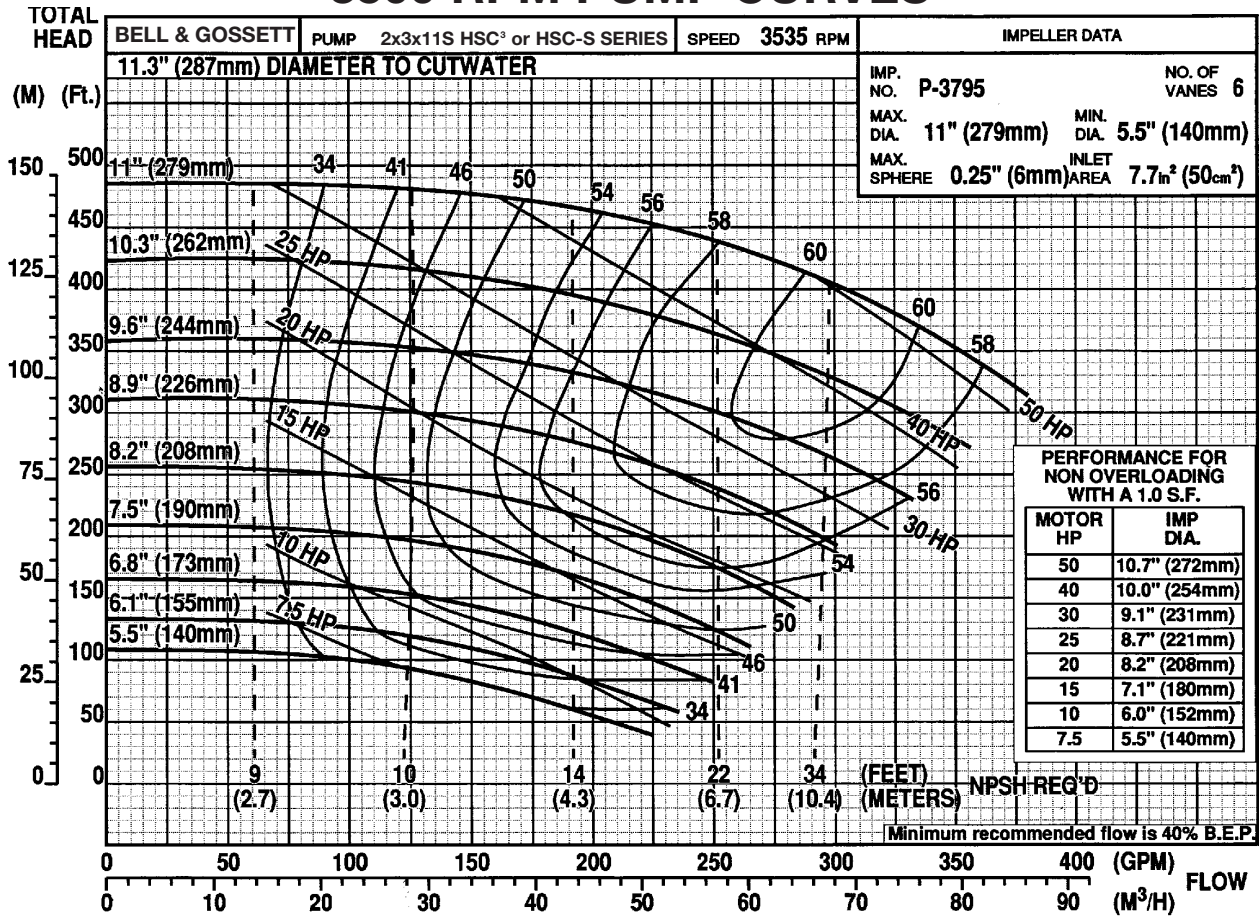
$$\begin{aligned} \text{Pressure (PSI)} &= \frac{\text{Head (Feet)} \times \text{Specific Gravity}}{2.31} \\ \text{Head (Feet)} &= \frac{\text{Pressure (PSI)} \times 2.31}{\text{Specific Gravity}} \\ \text{Vacuum (Inches of Mercury)} &= \frac{\text{Dynamic Suction Lift (Feet)} \times .883}{\text{Specific Gravity}} \\ \text{Horsepower (Brake)} &= \frac{\text{GPM} \times \text{Head (Feet)} \times \text{Specific Gravity}}{3960 \times \text{Pump Efficiency}} \\ \text{Horsepower (Water)} &= \frac{\text{GPM} \times \text{Head (Feet)} \times \text{Specific Gravity}}{3960} \\ \text{Efficiency (Pump)} &= \frac{\text{Horsepower (Water)}}{\text{Horsepower (Brake)}} \times 100 \text{ Per Cent} \\ \text{NPSH (Available)} &= \text{Positive Factors} - \text{Negative Factors} \end{aligned}$$

Affinity Laws: Effect of change of speed or impeller diameter on centrifugal pumps.

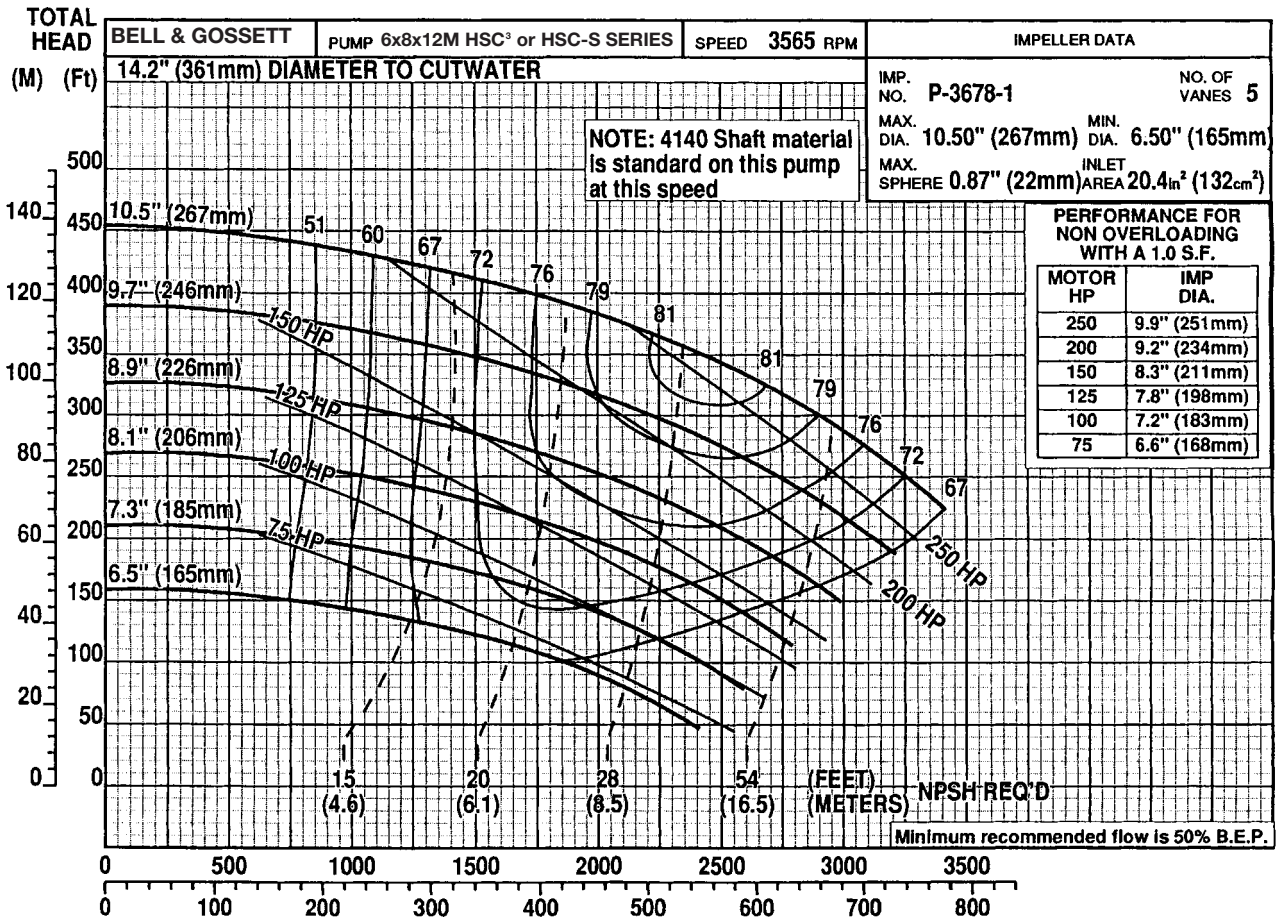
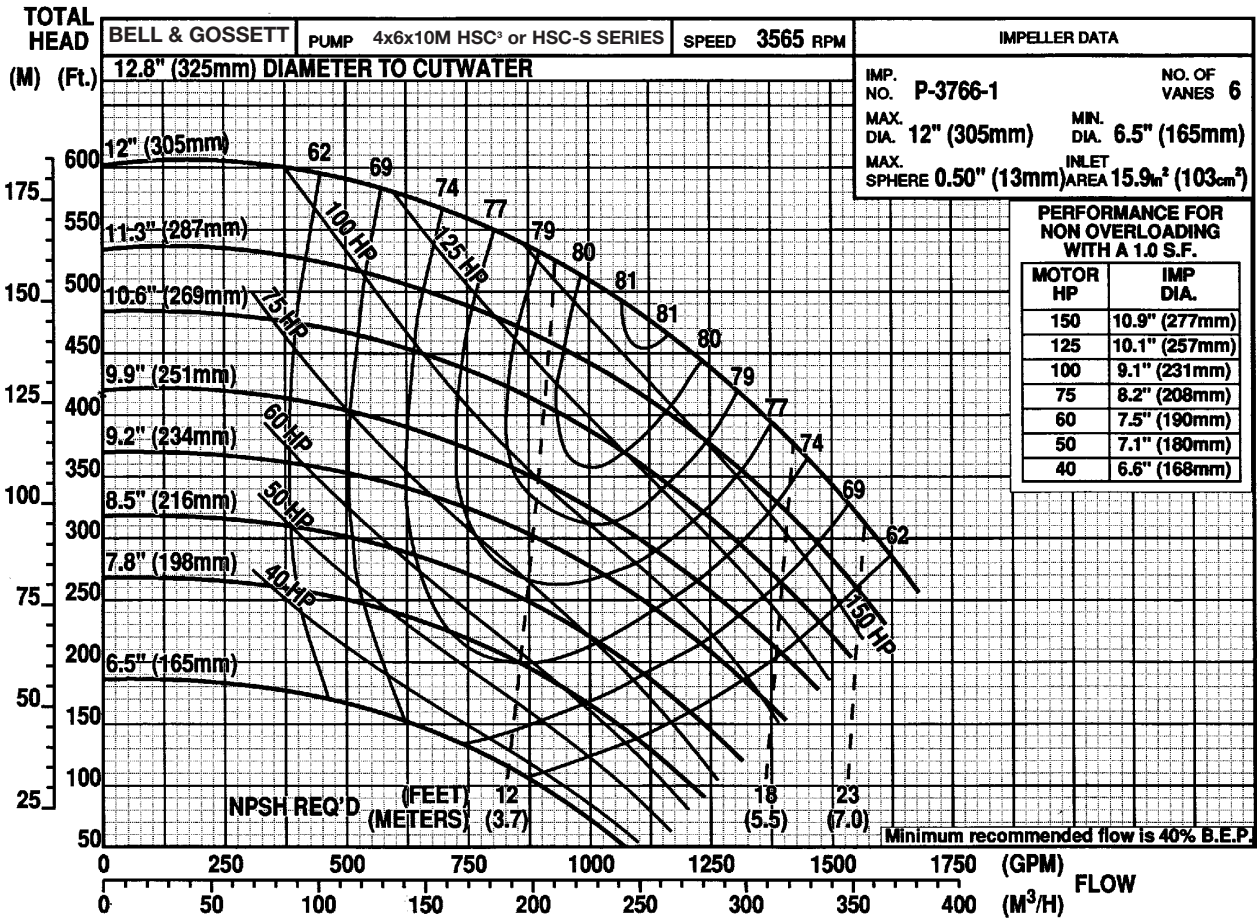
	GPM Capacity	Ft. Head	BHP
Impeller Diameter Change	$Q_2 = \frac{D_2}{D_1} Q_1$	$H_2 = \left(\frac{D_2}{D_1}\right)^2 H_1$	$P_2 = \left(\frac{D_2}{D_1}\right)^3 P_1$
Speed Change	$Q_2 = \frac{RPM_2}{RPM_1} Q_1$	$H_2 = \left(\frac{RPM_2}{RPM_1}\right)^2 H_1$	$P_2 = \left(\frac{RPM_2}{RPM_1}\right)^3 P_1$

Where Q = GPM, H = Head, P = BHP, D = Impeller Dia., RPM = Pump Speed

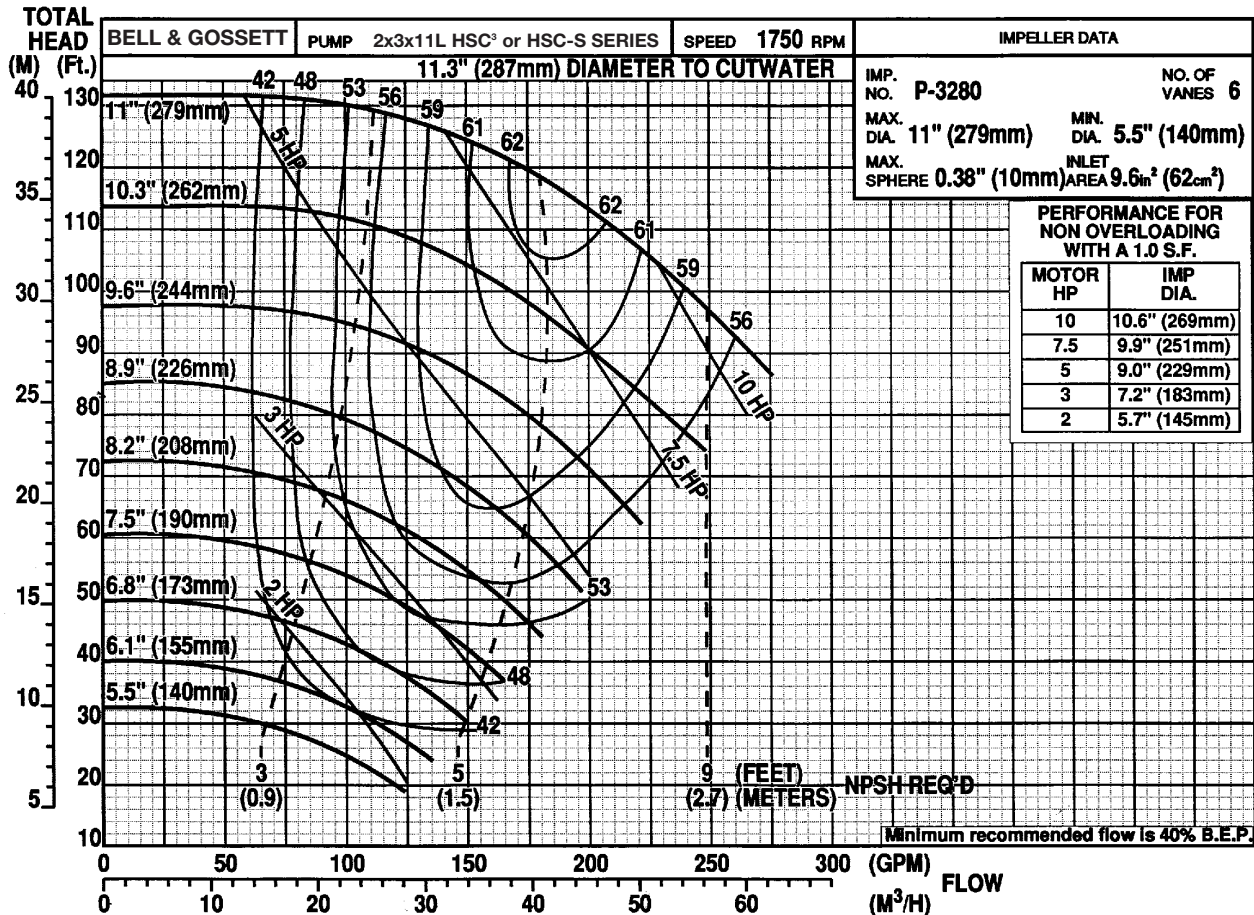
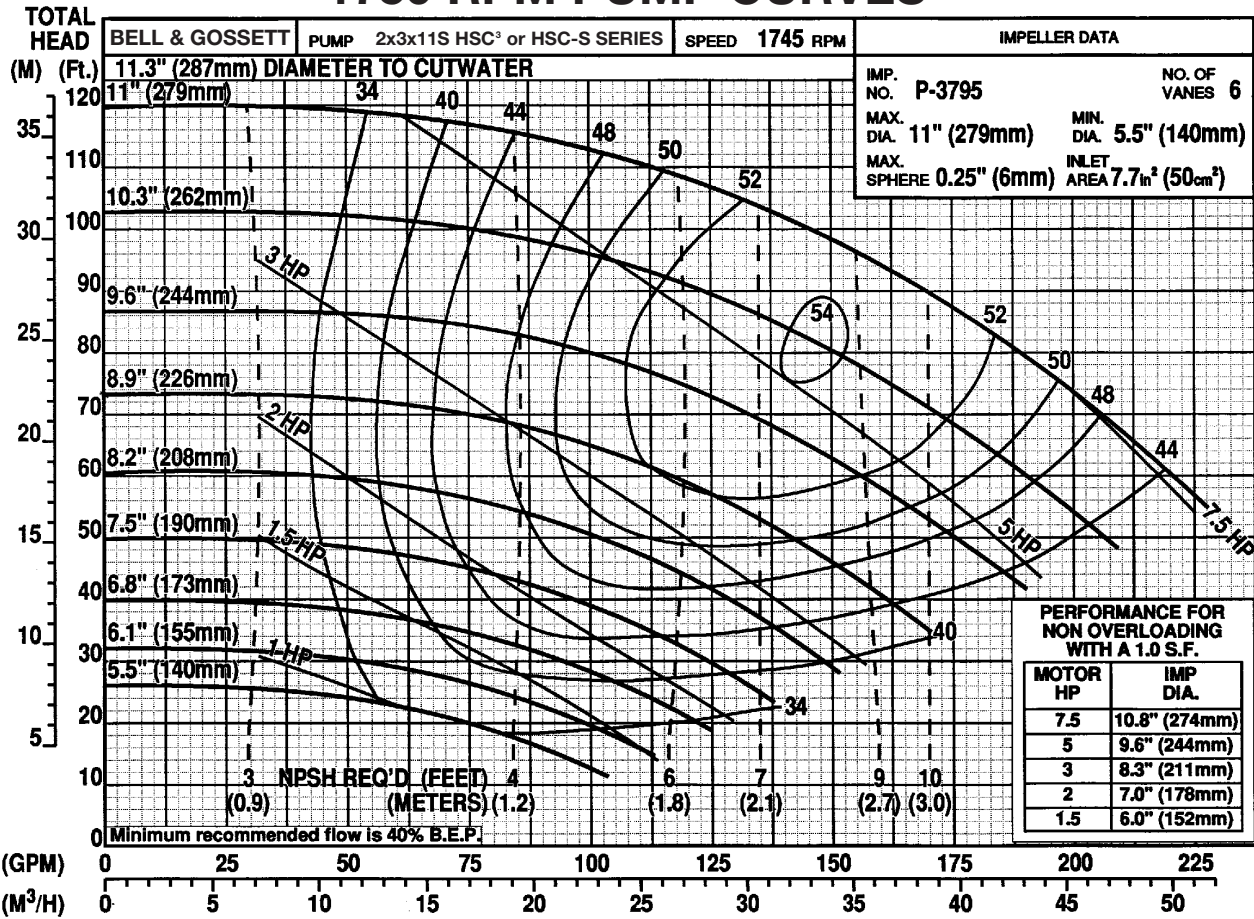
3500 RPM PUMP CURVES



3500 RPM PUMP CURVES

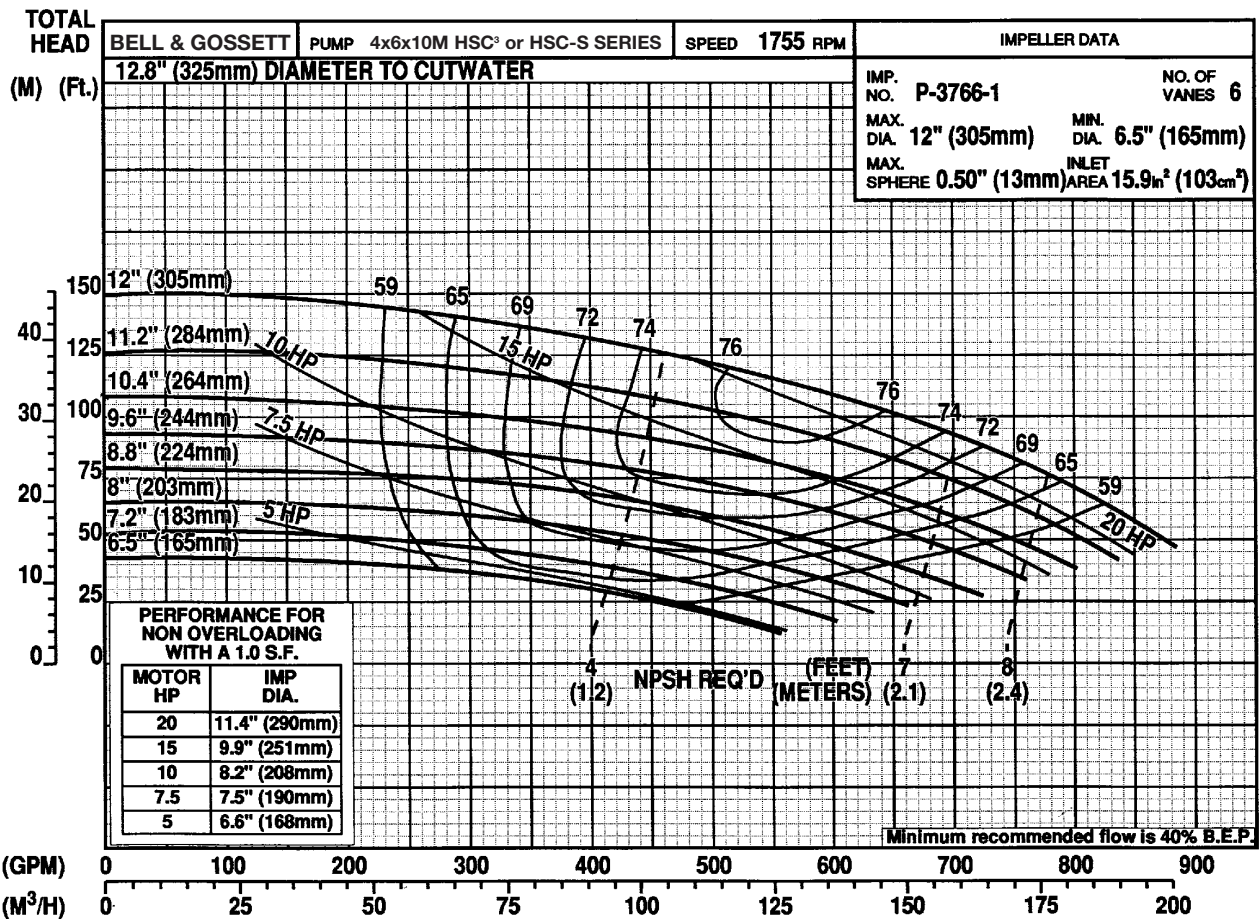
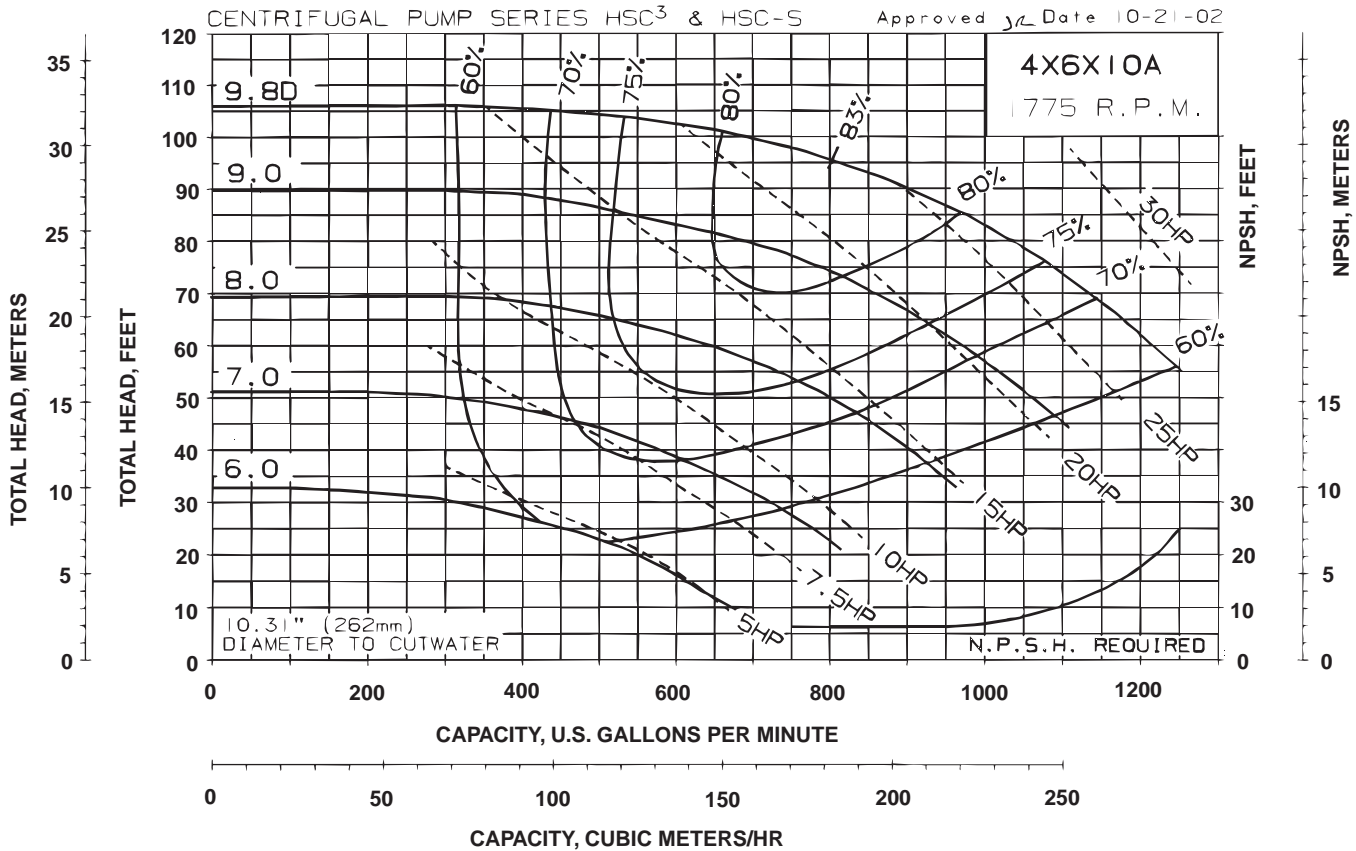


1750 RPM PUMP CURVES

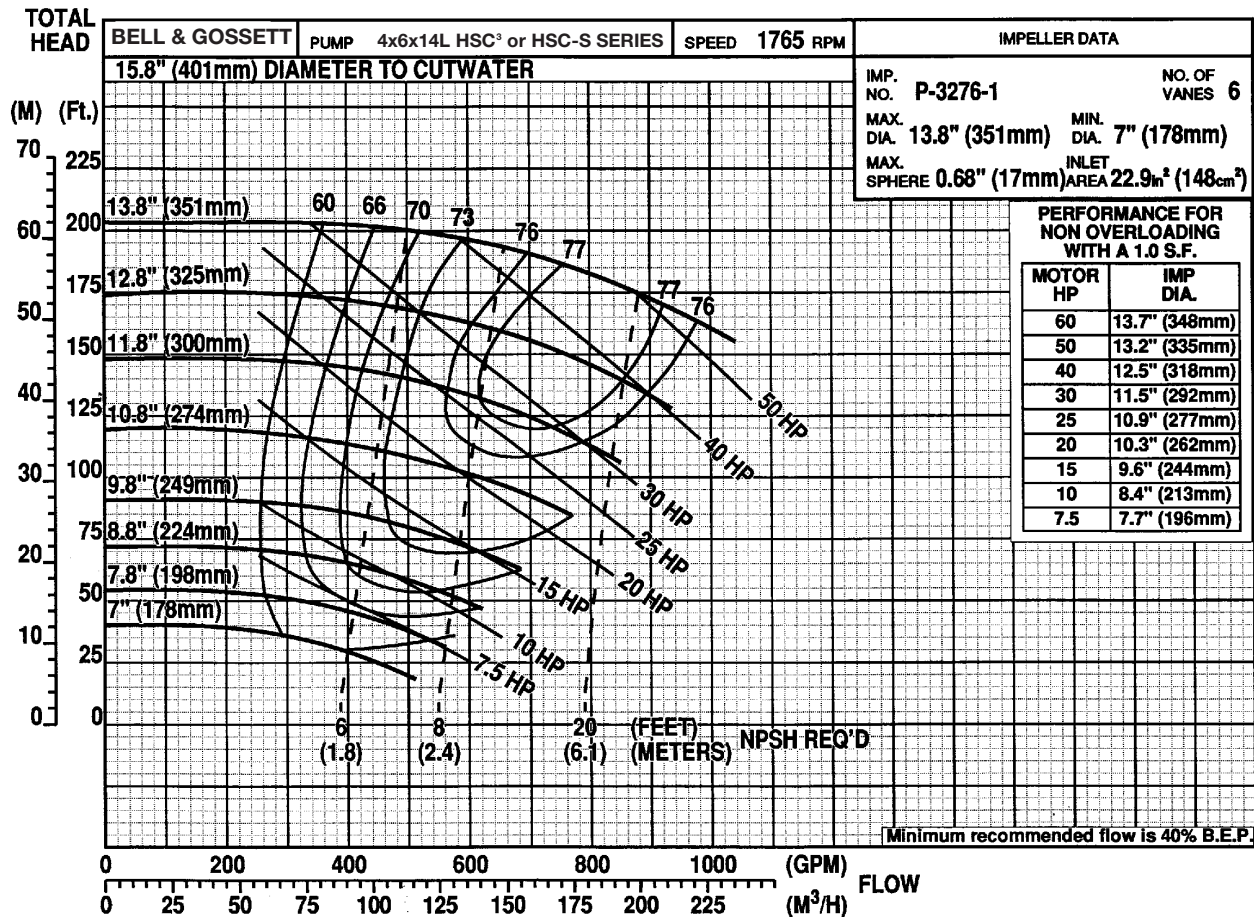
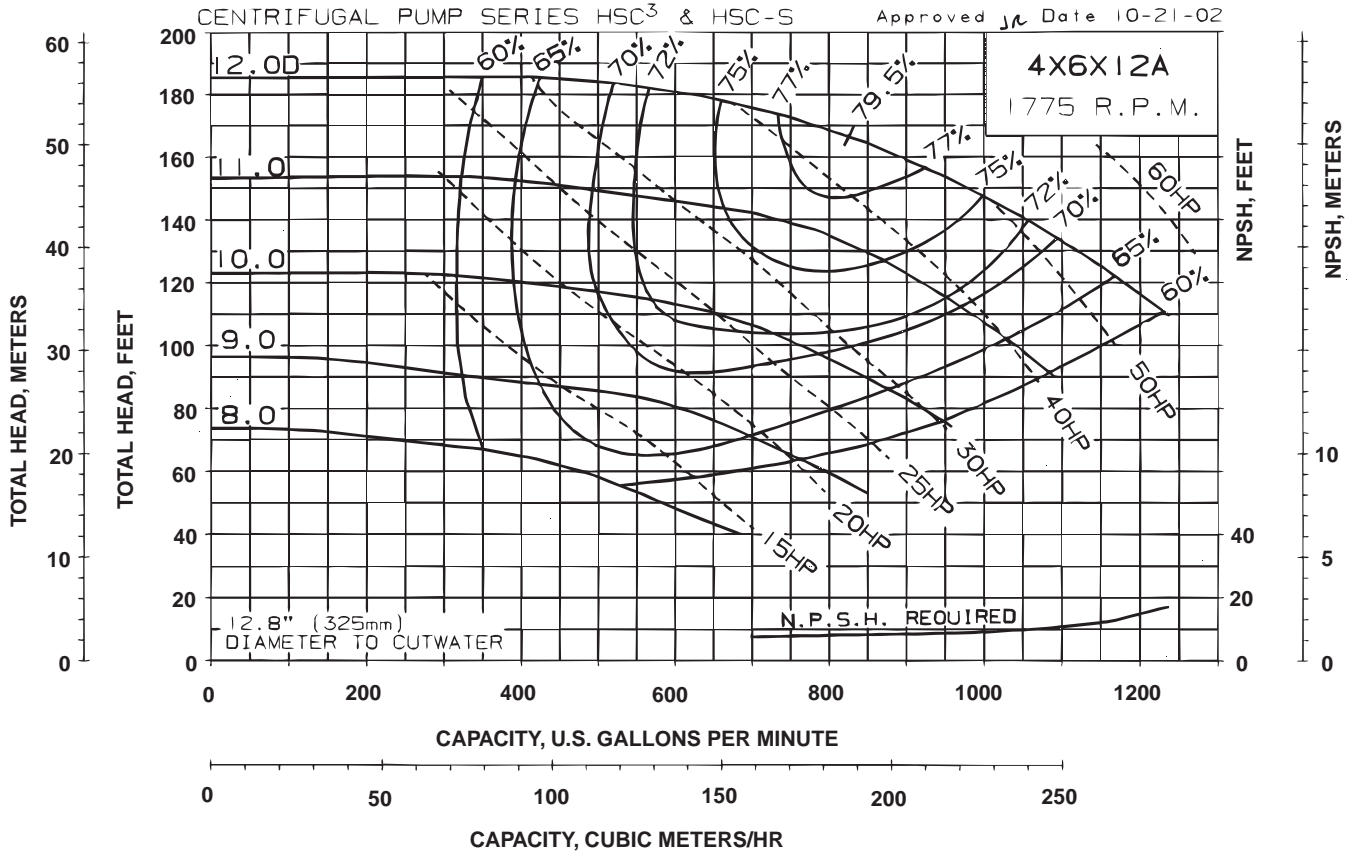


1750 RPM PUMP CURVES

B-560H

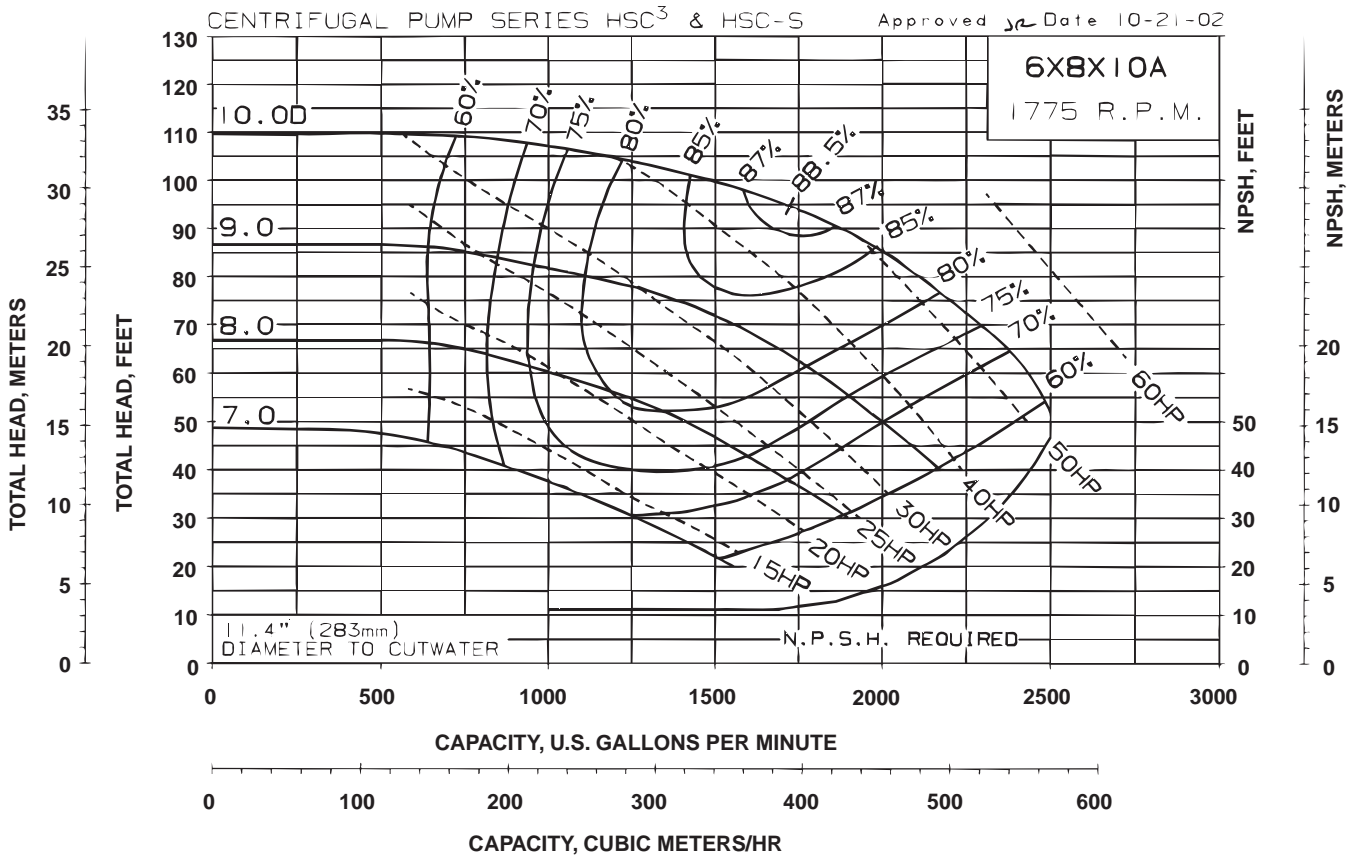
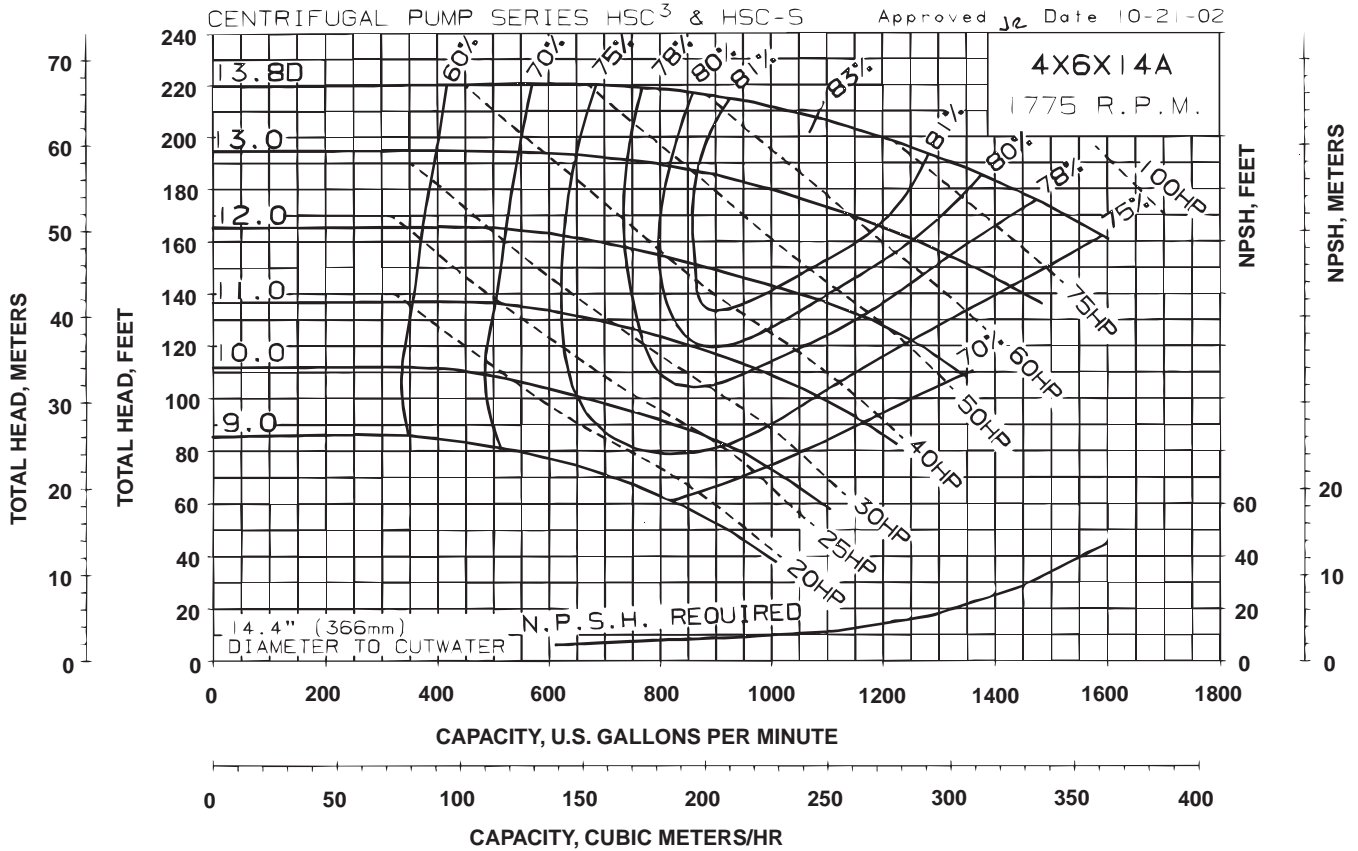


1750 RPM PUMP CURVES

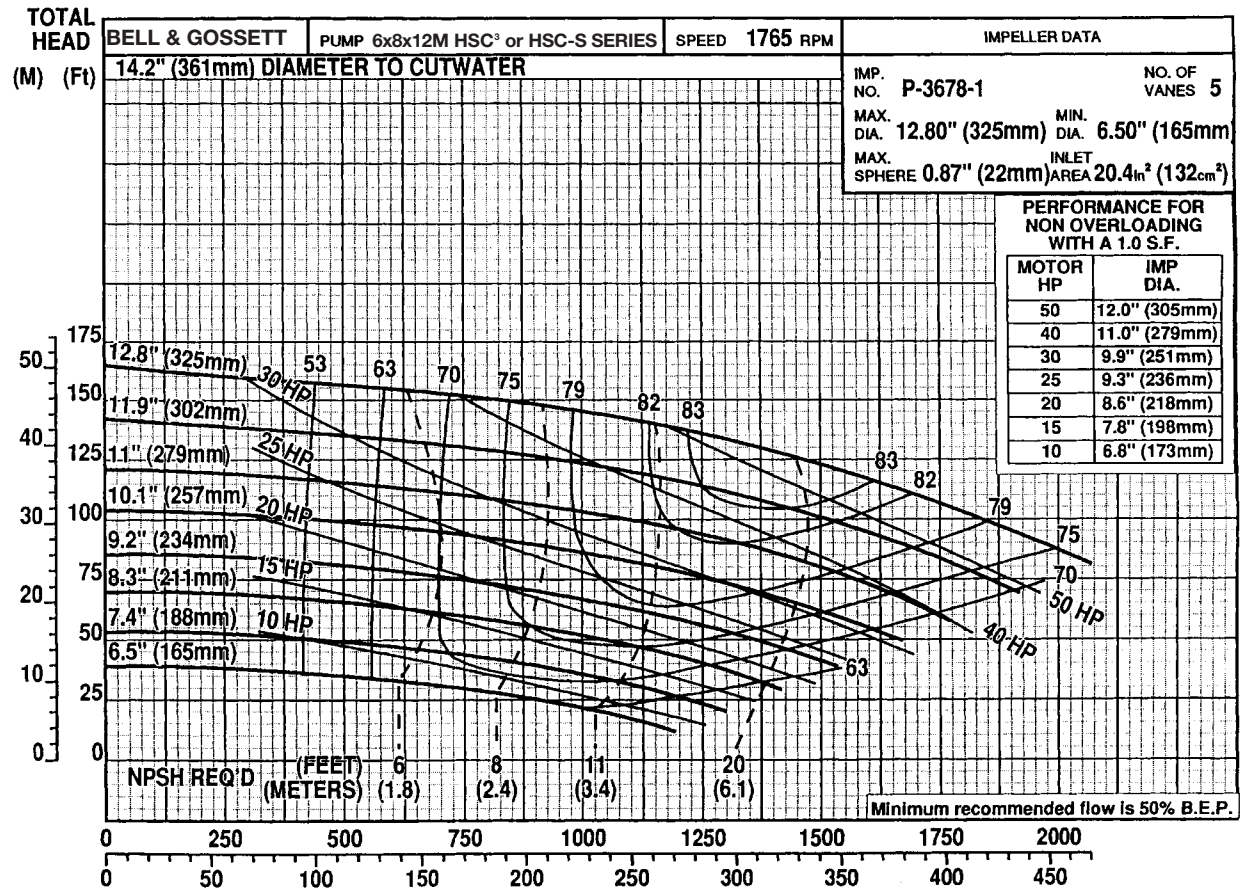
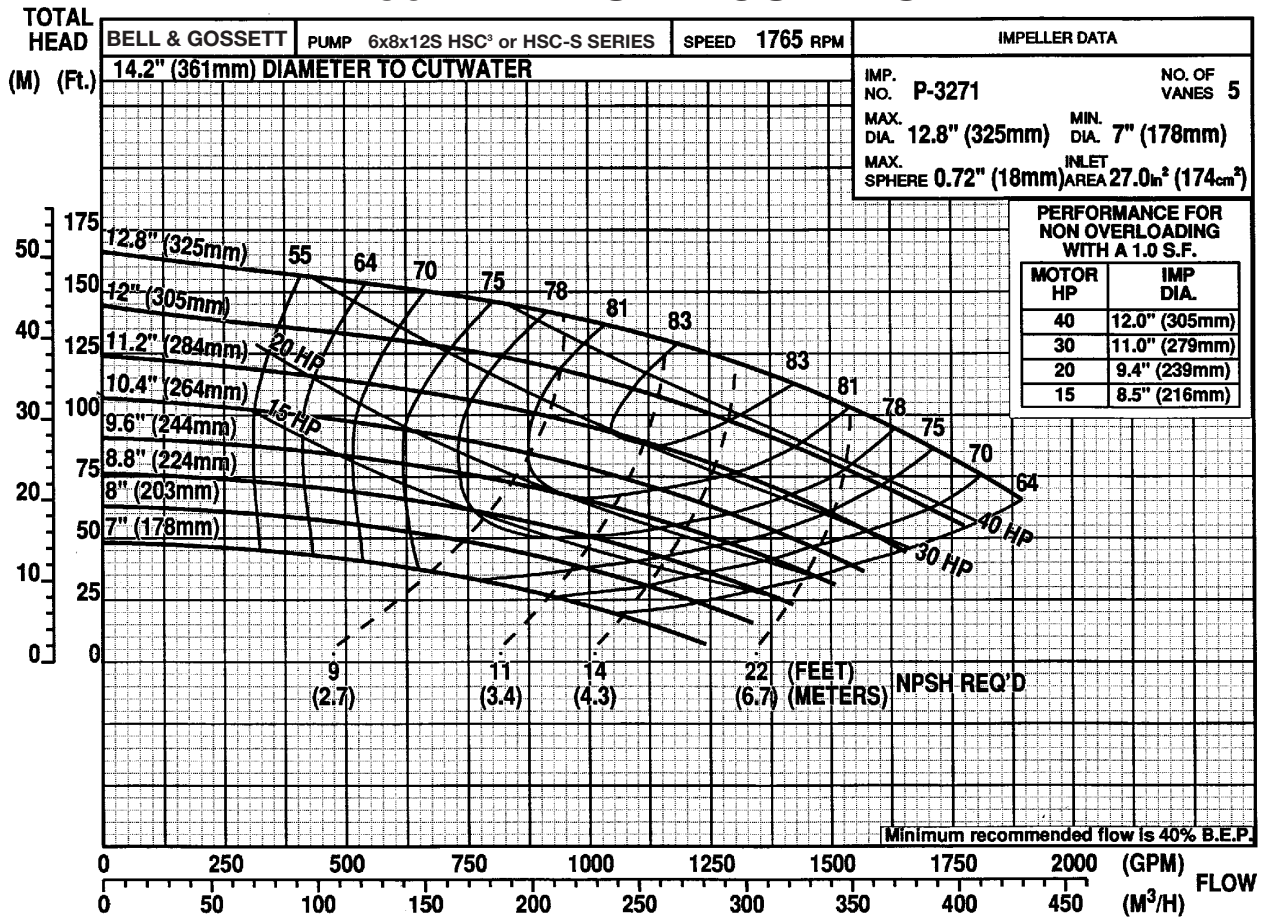


1750 RPM PUMP CURVES

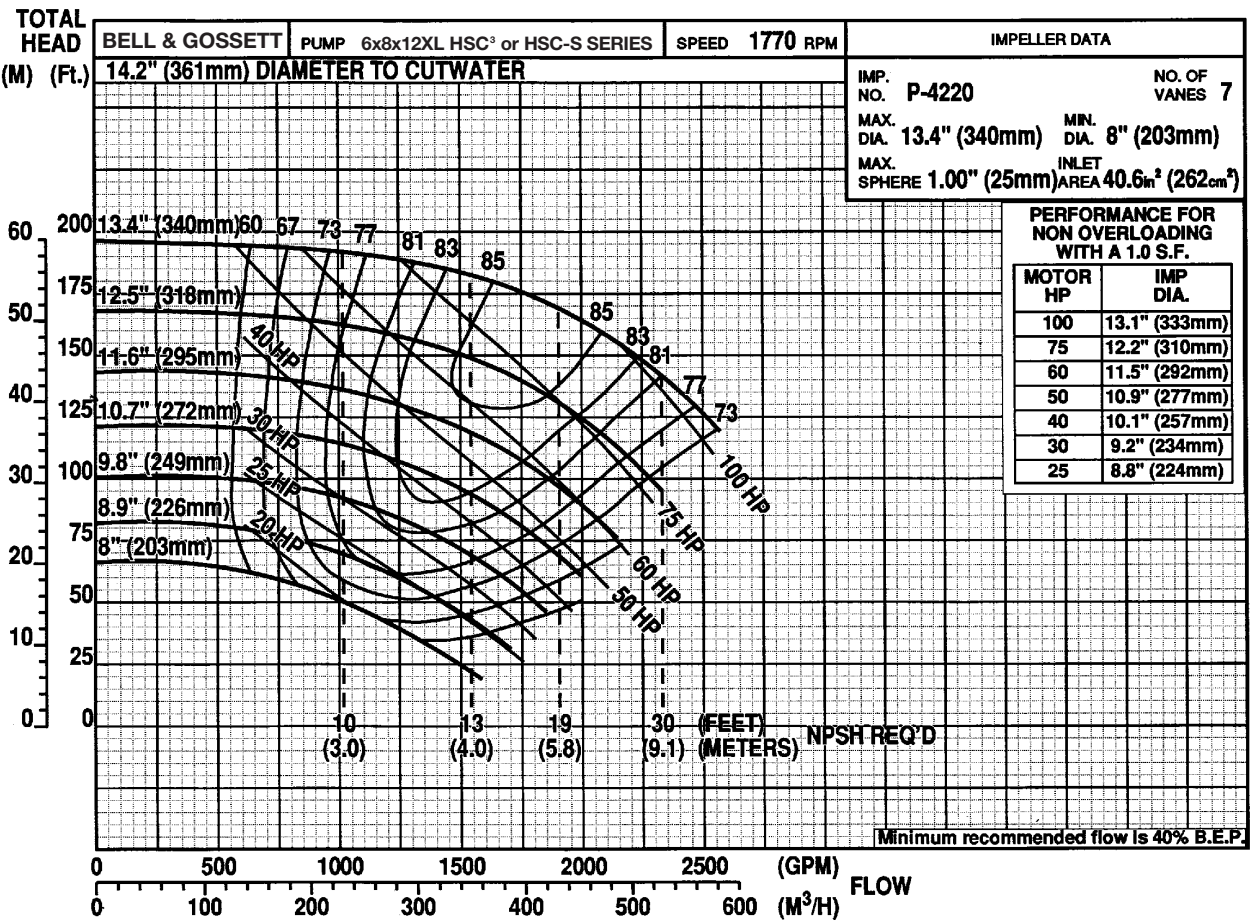
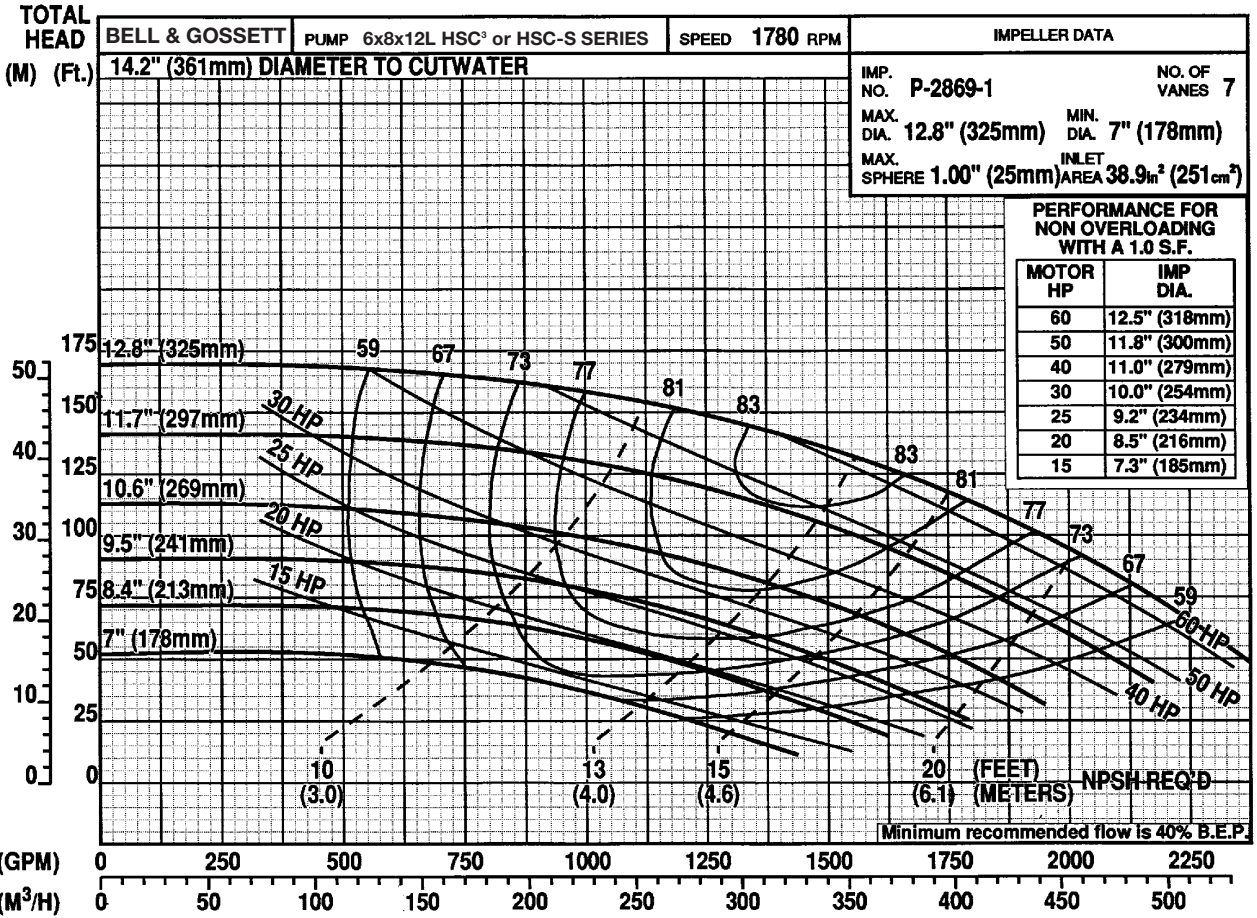
B-560H



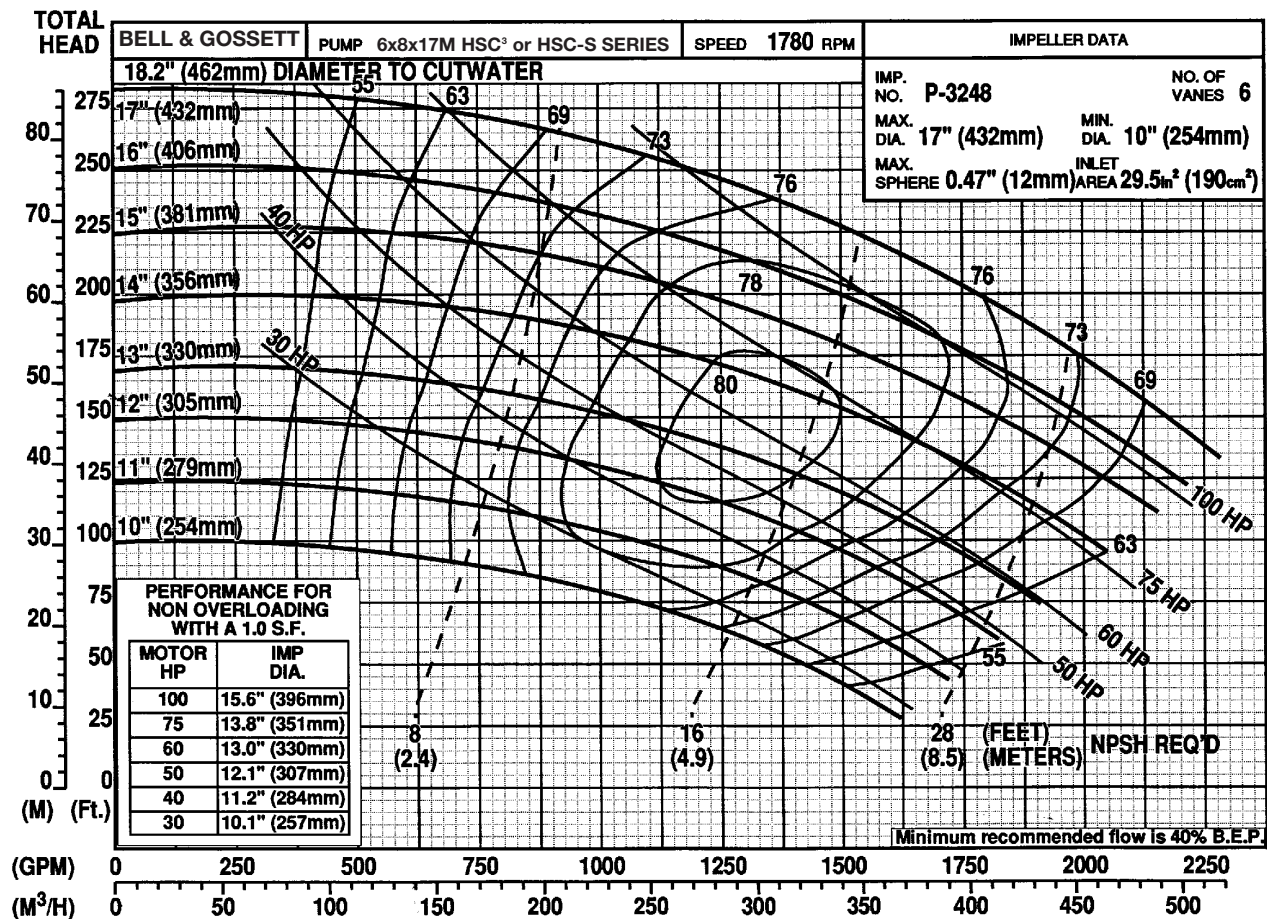
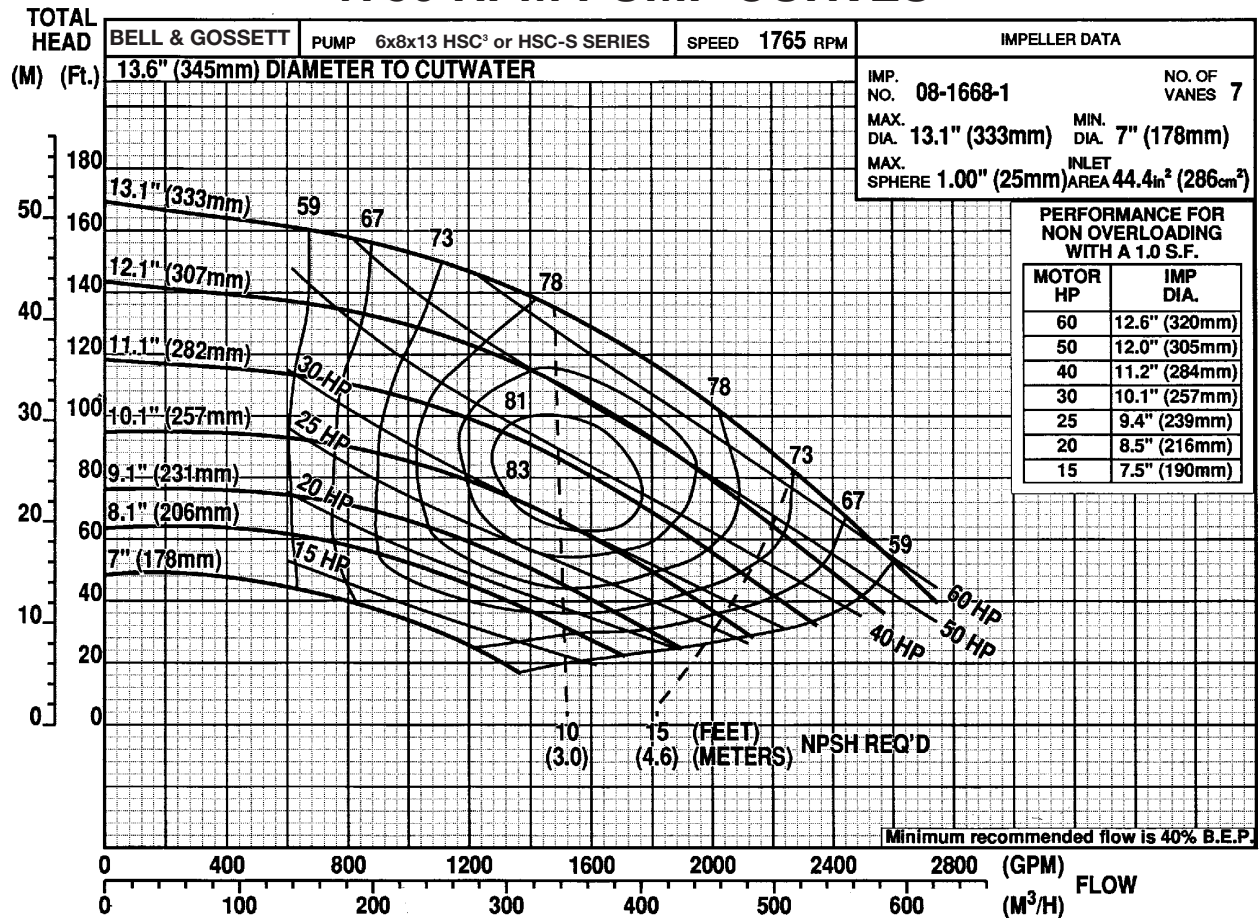
1750 RPM PUMP CURVES



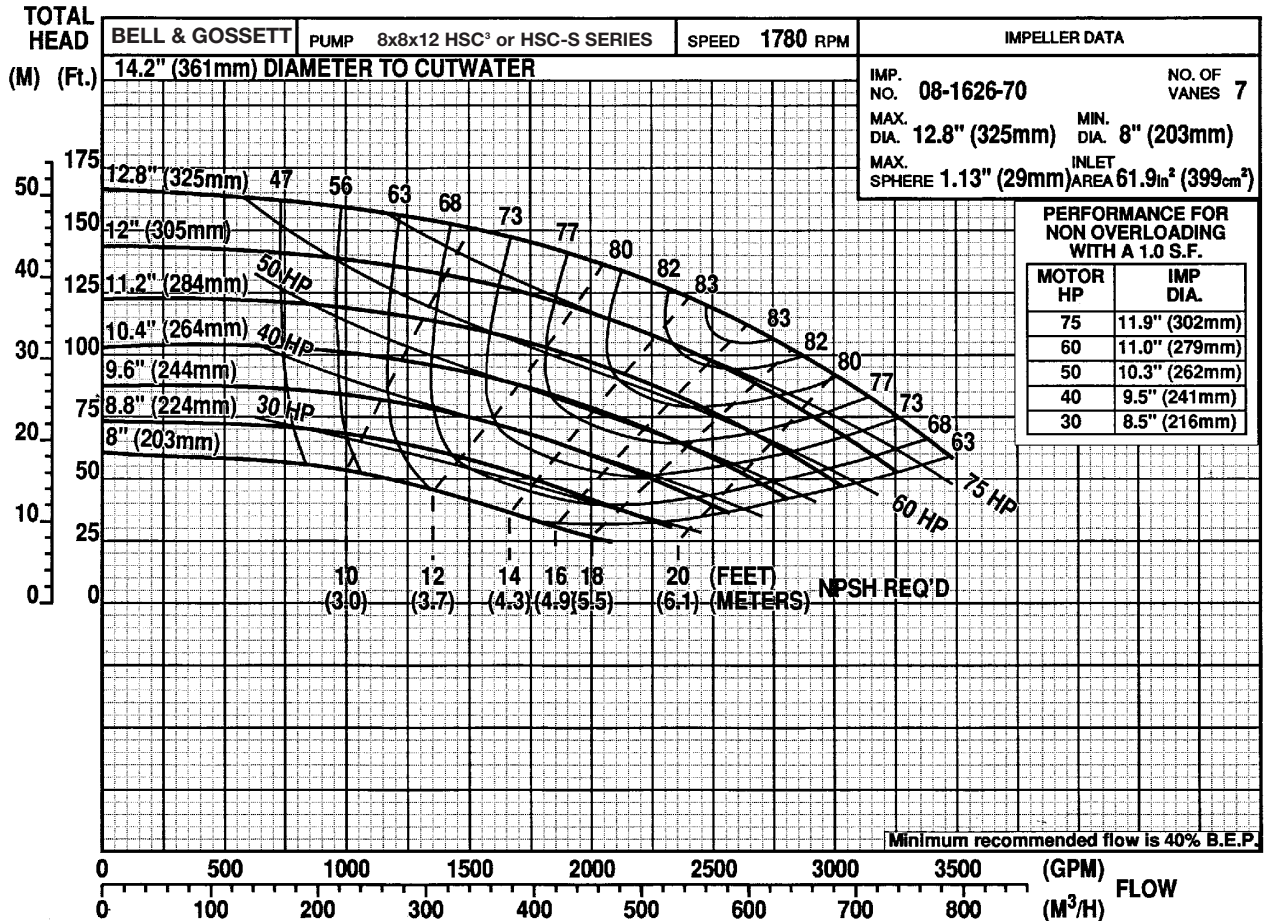
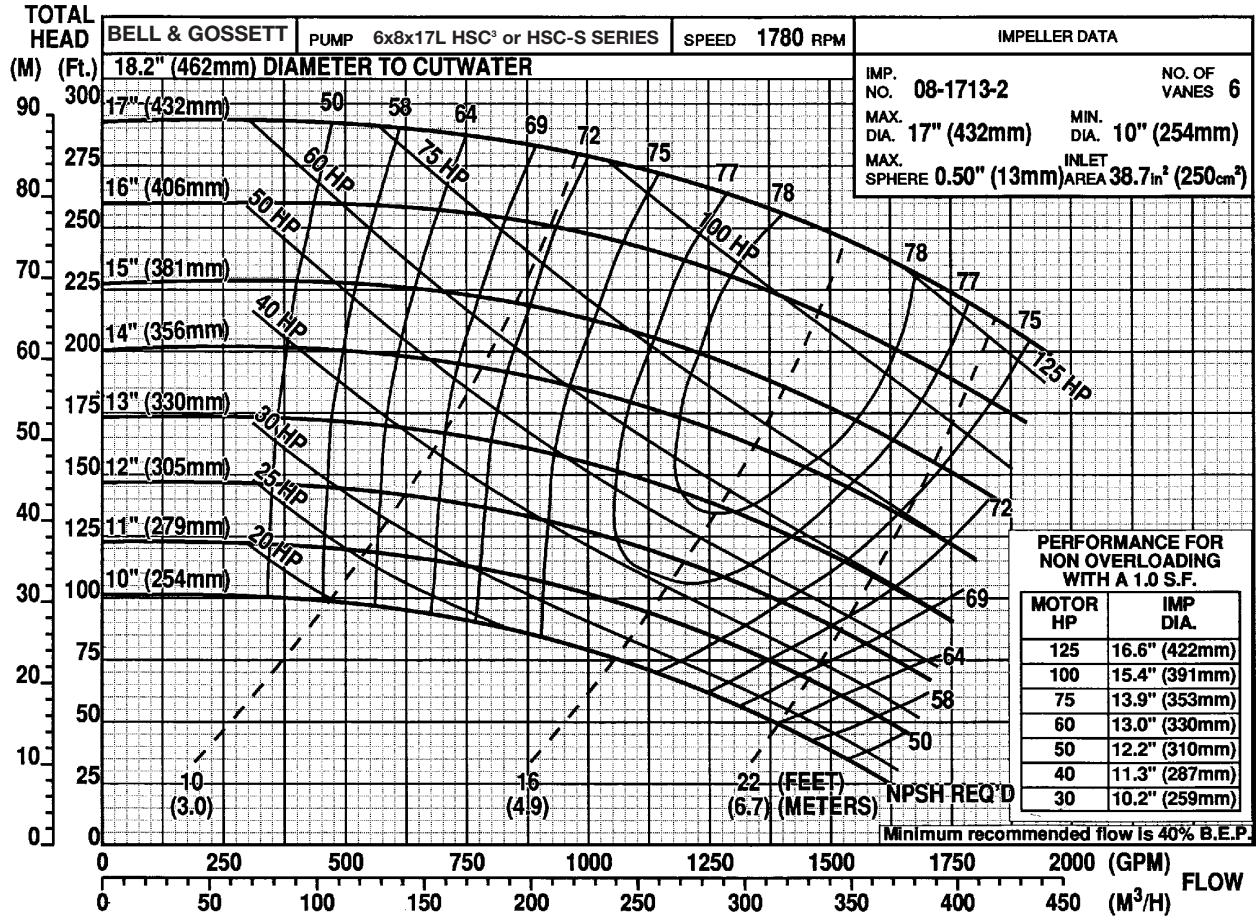
1750 RPM PUMP CURVES



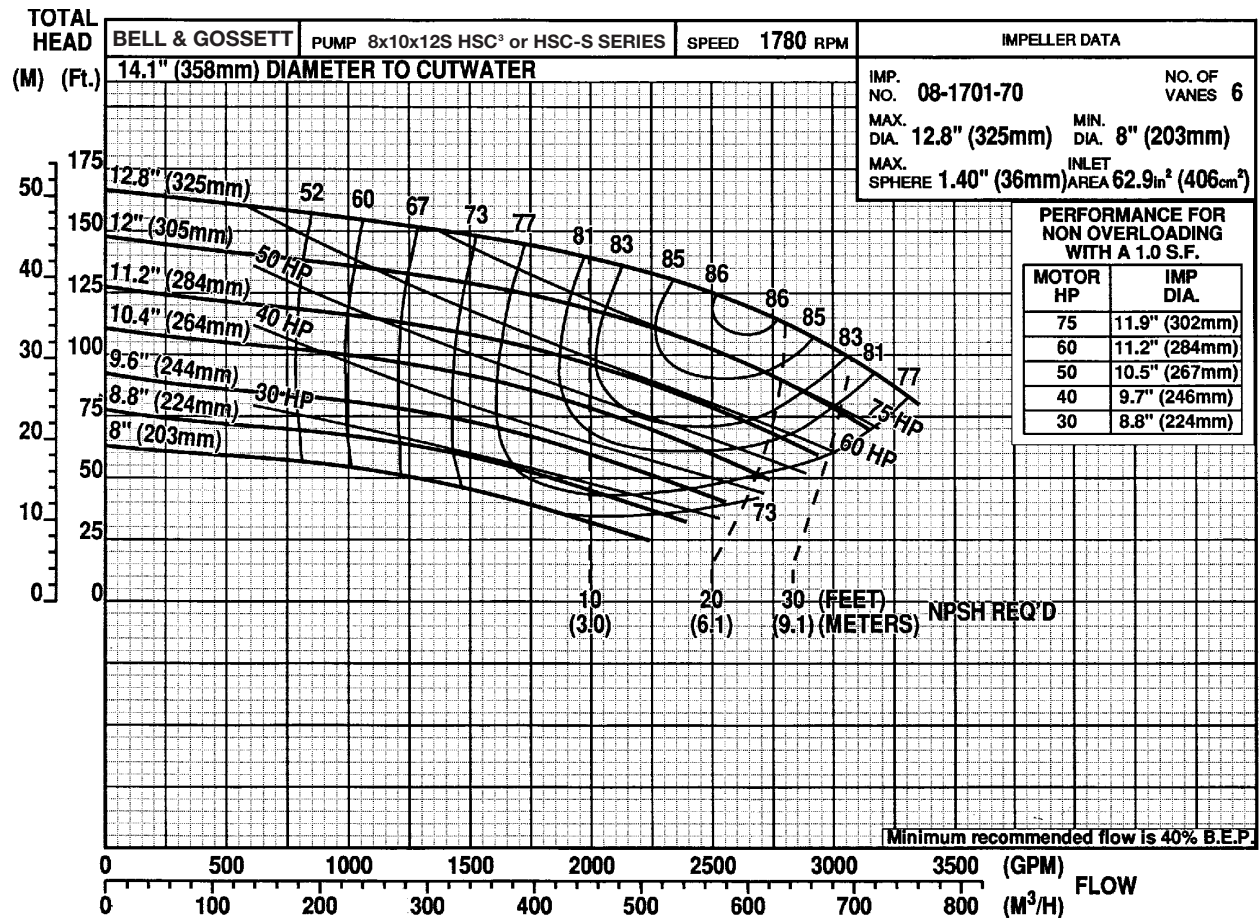
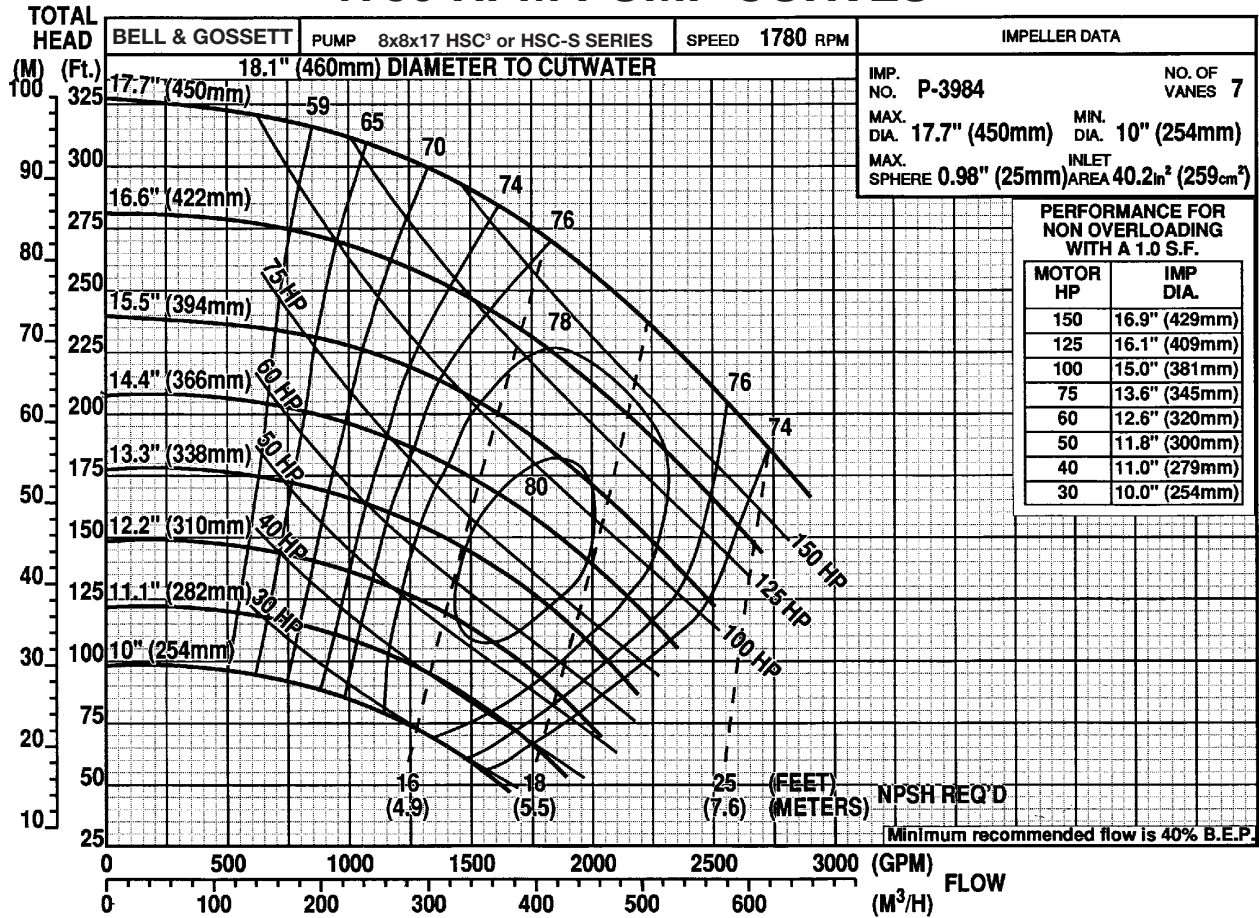
1750 RPM PUMP CURVES



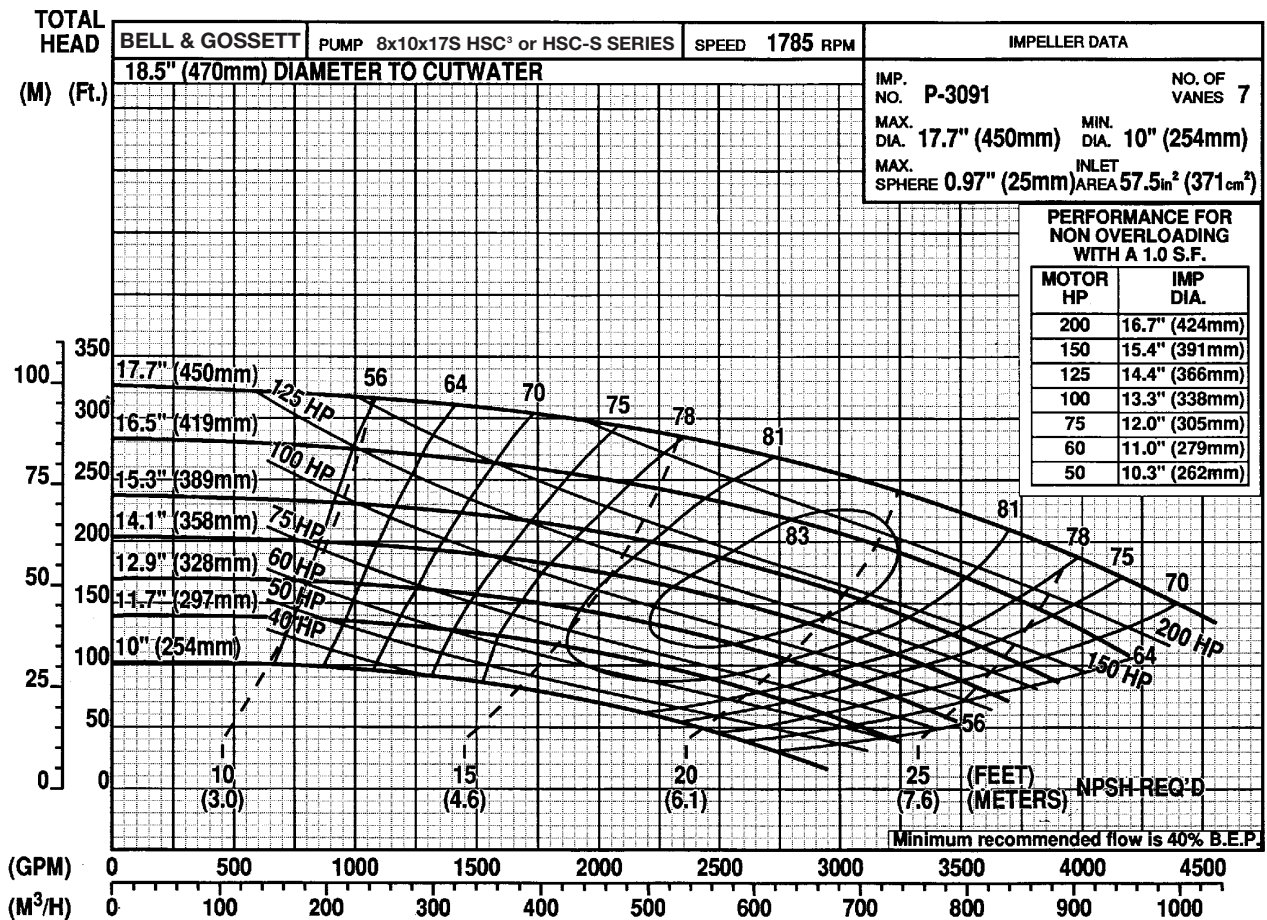
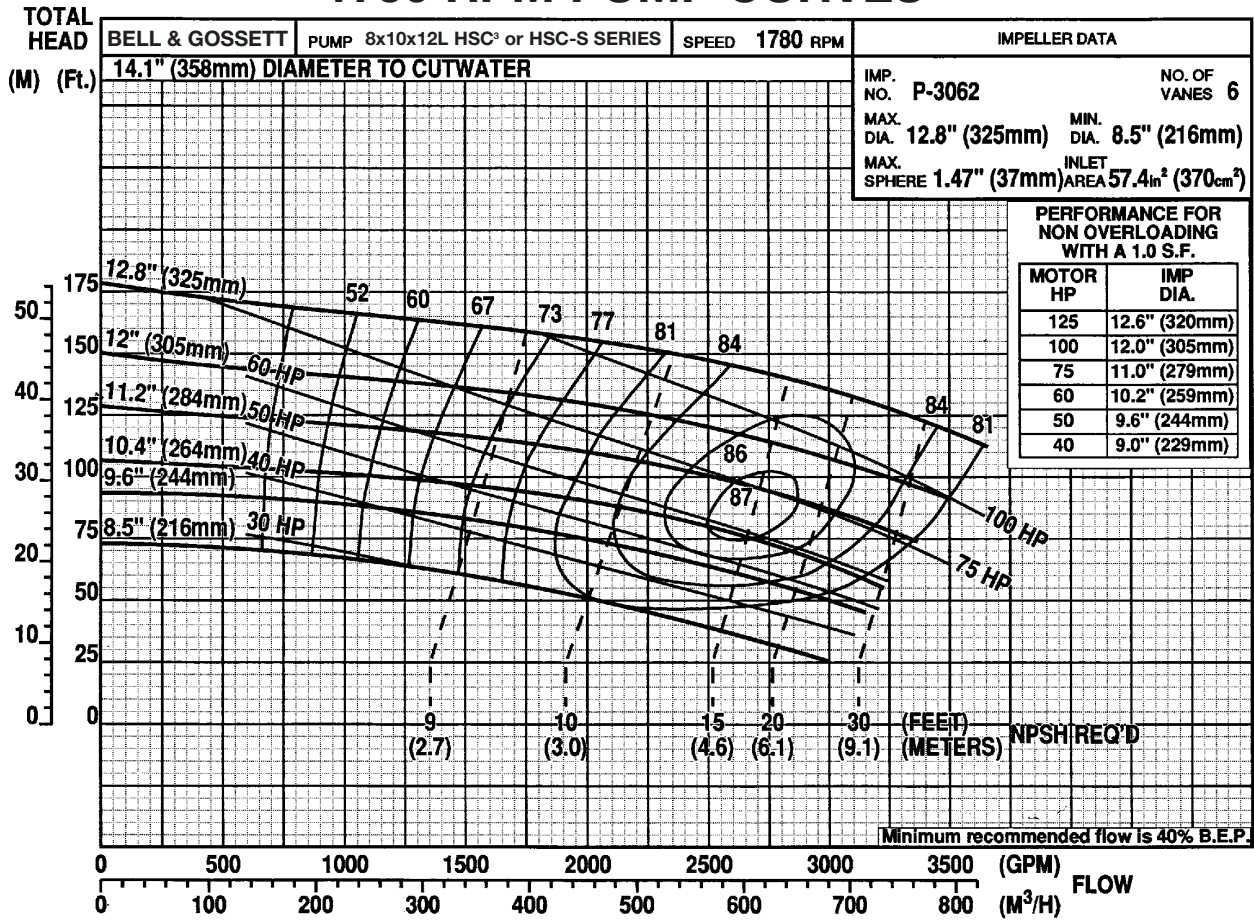
1750 RPM PUMP CURVES



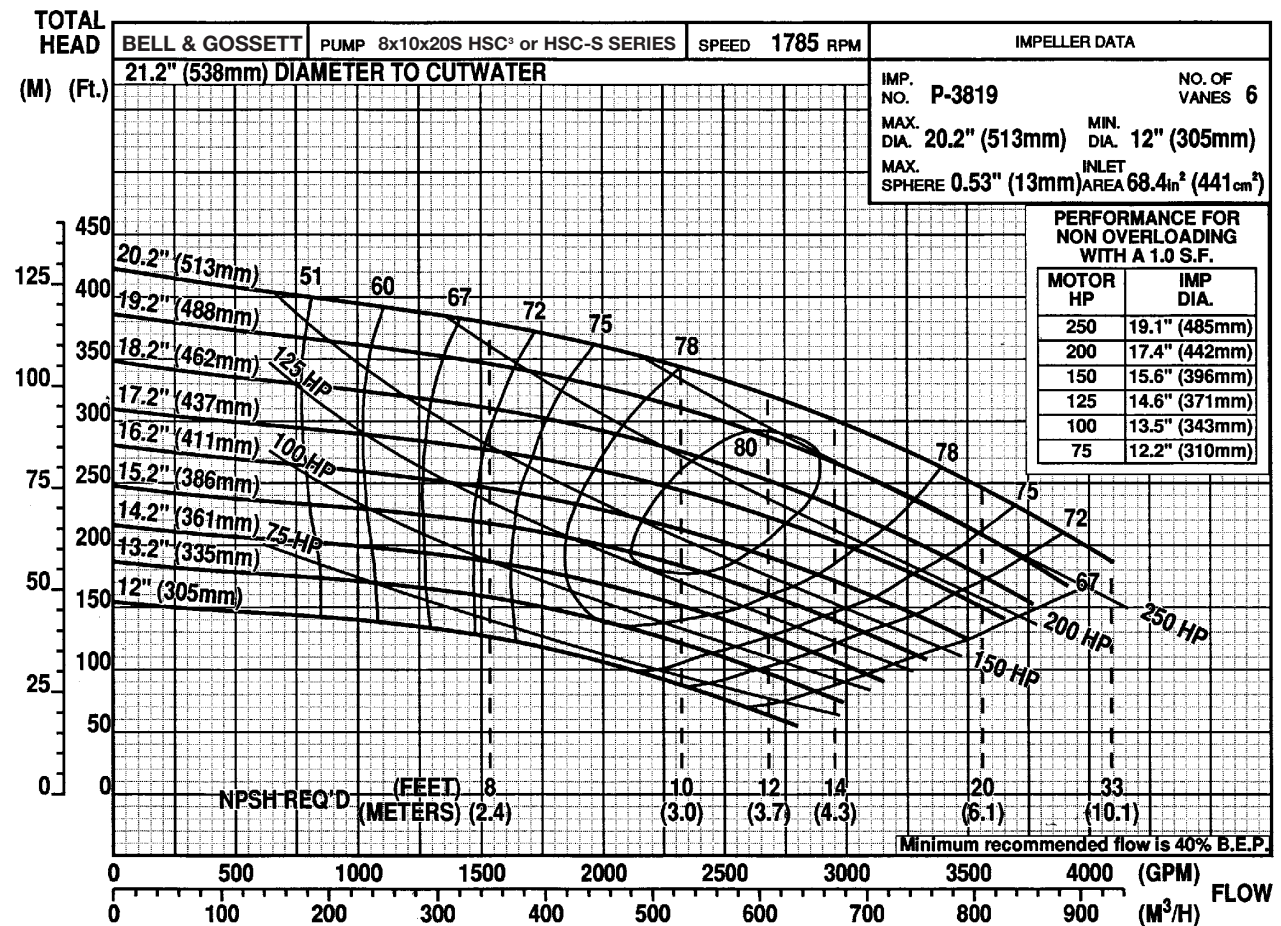
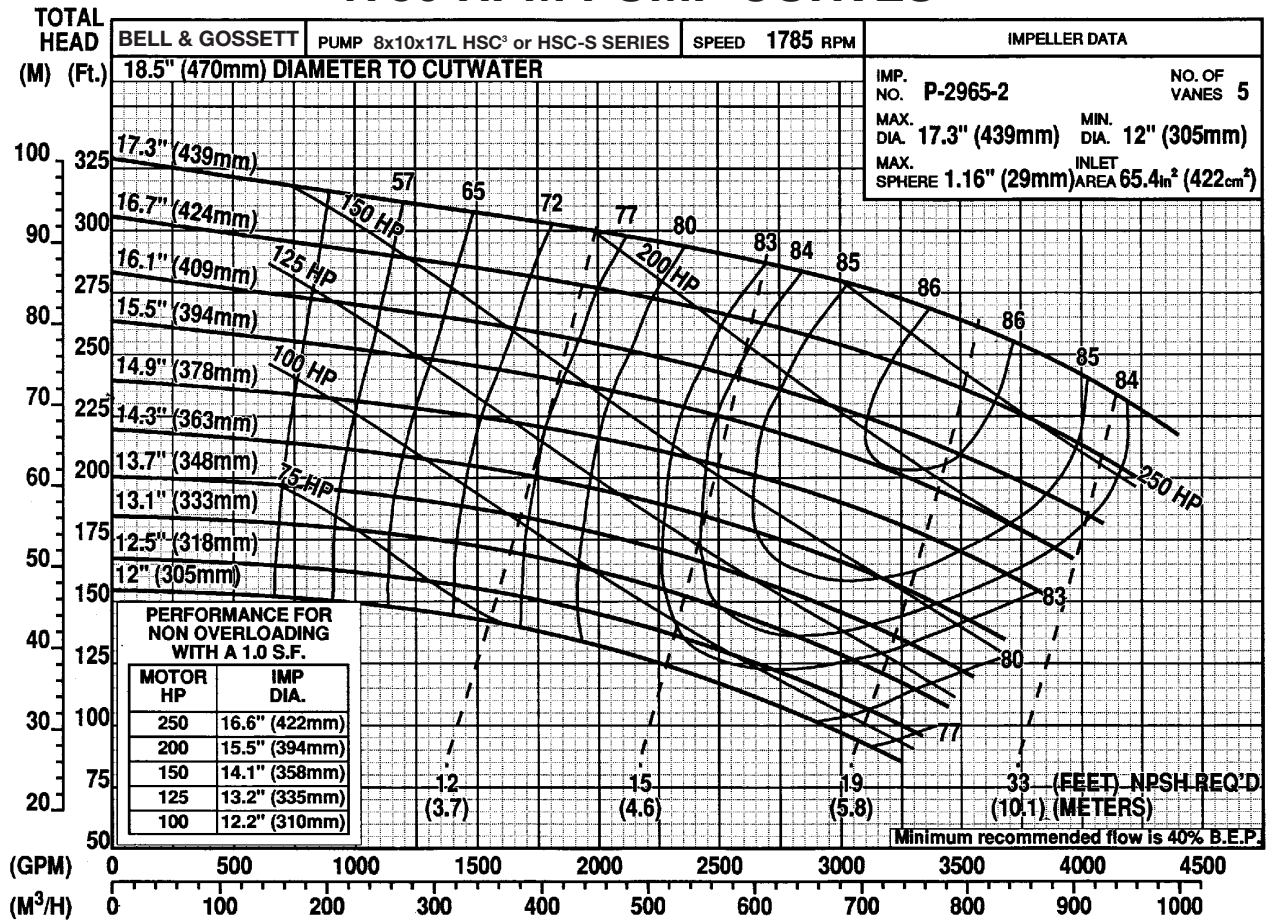
1750 RPM PUMP CURVES



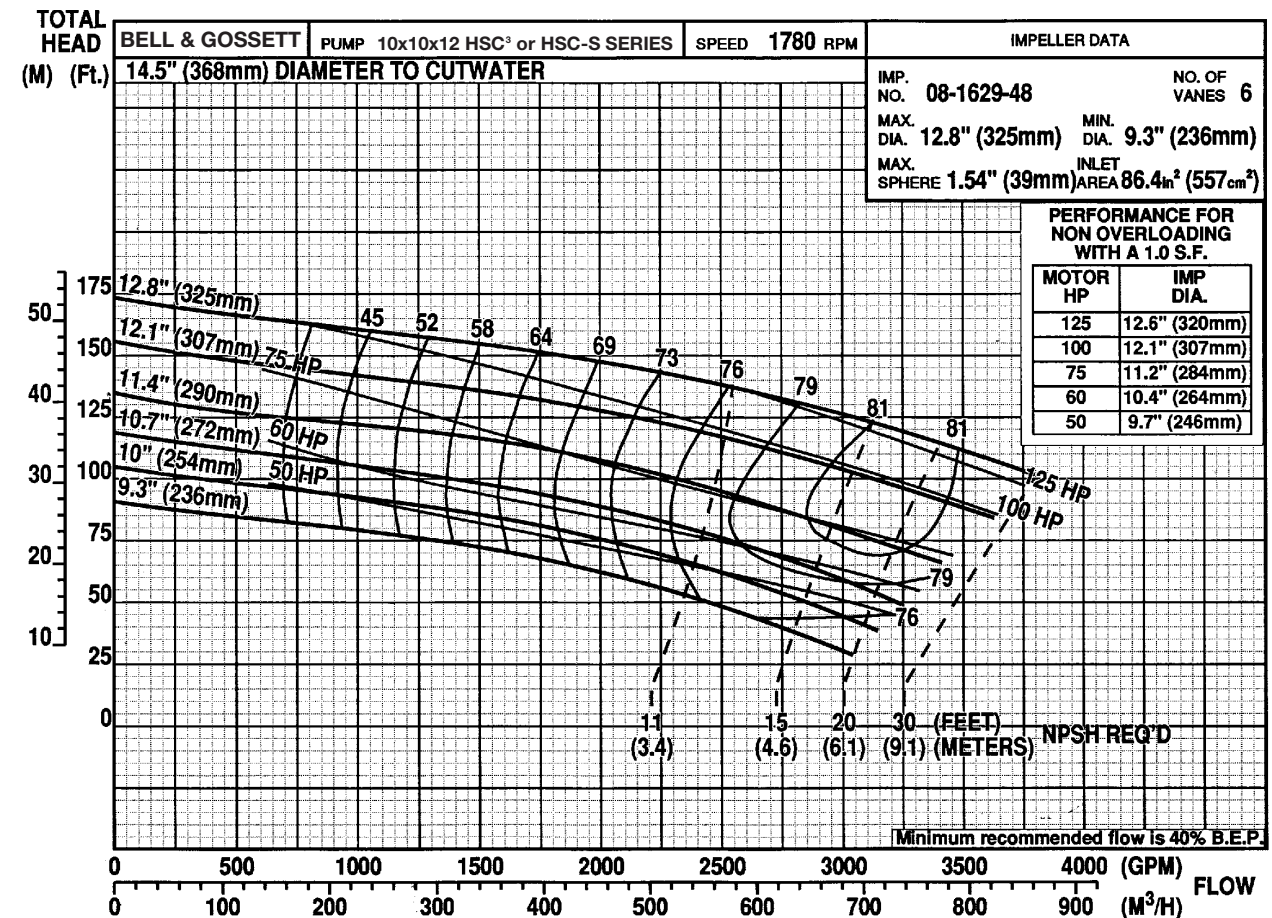
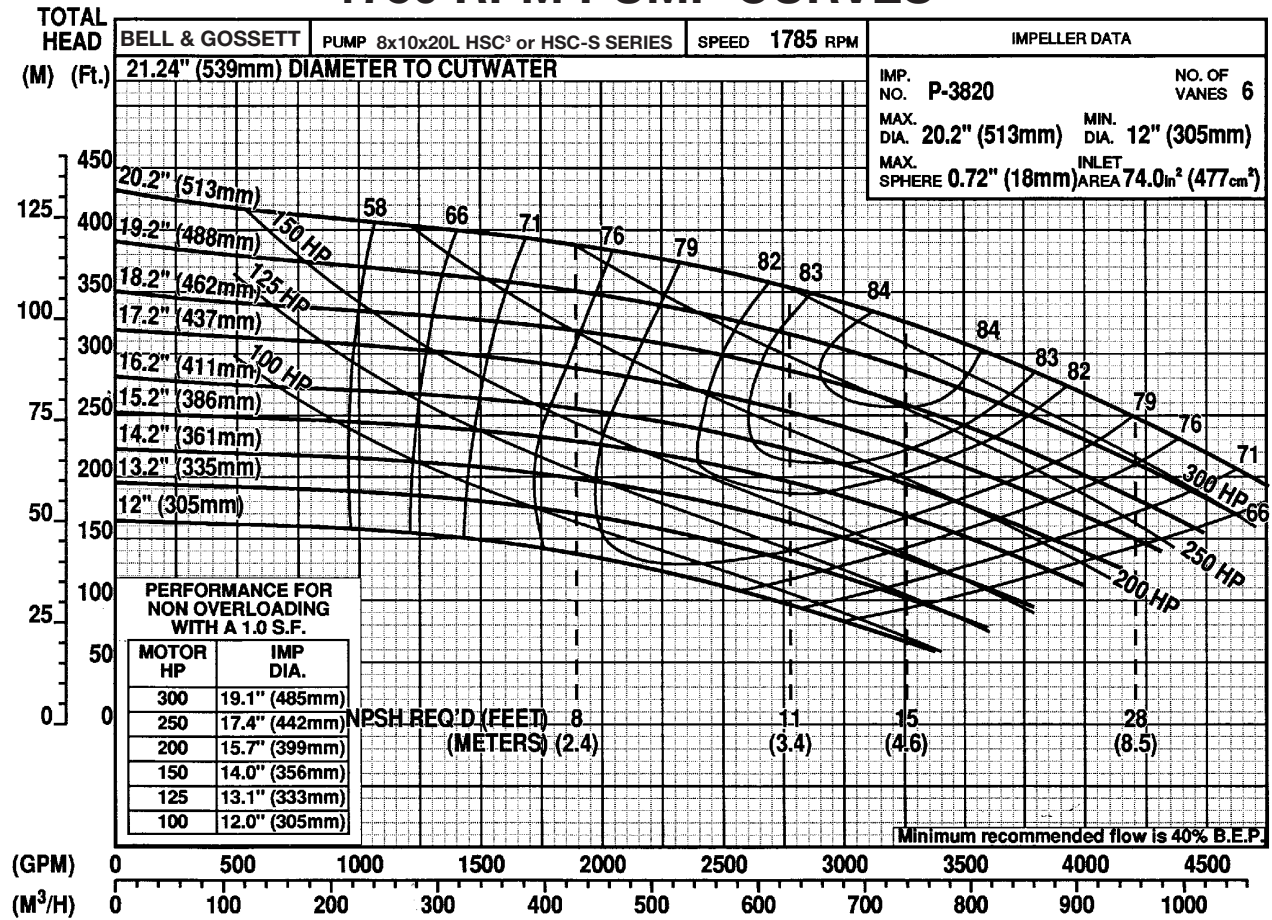
1750 RPM PUMP CURVES



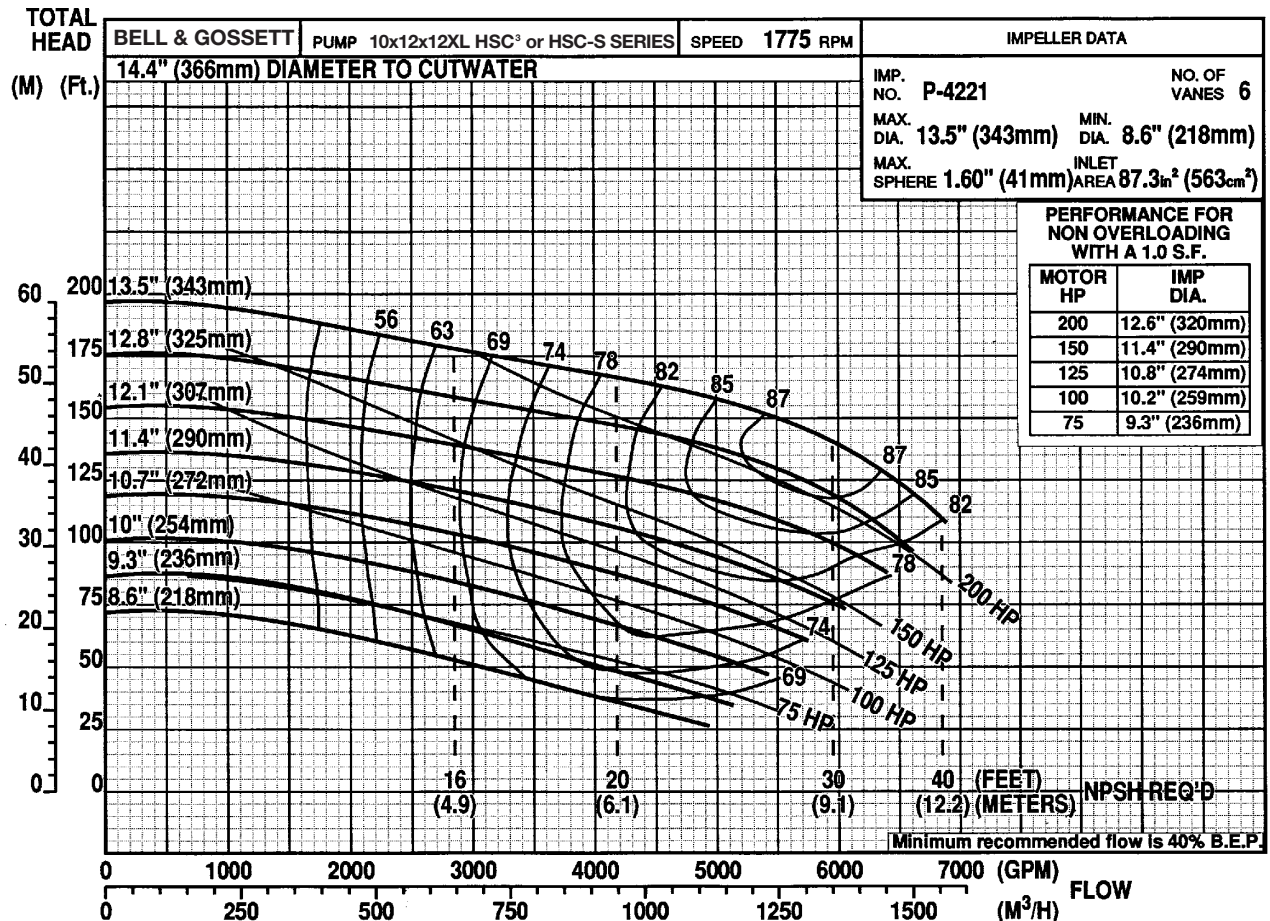
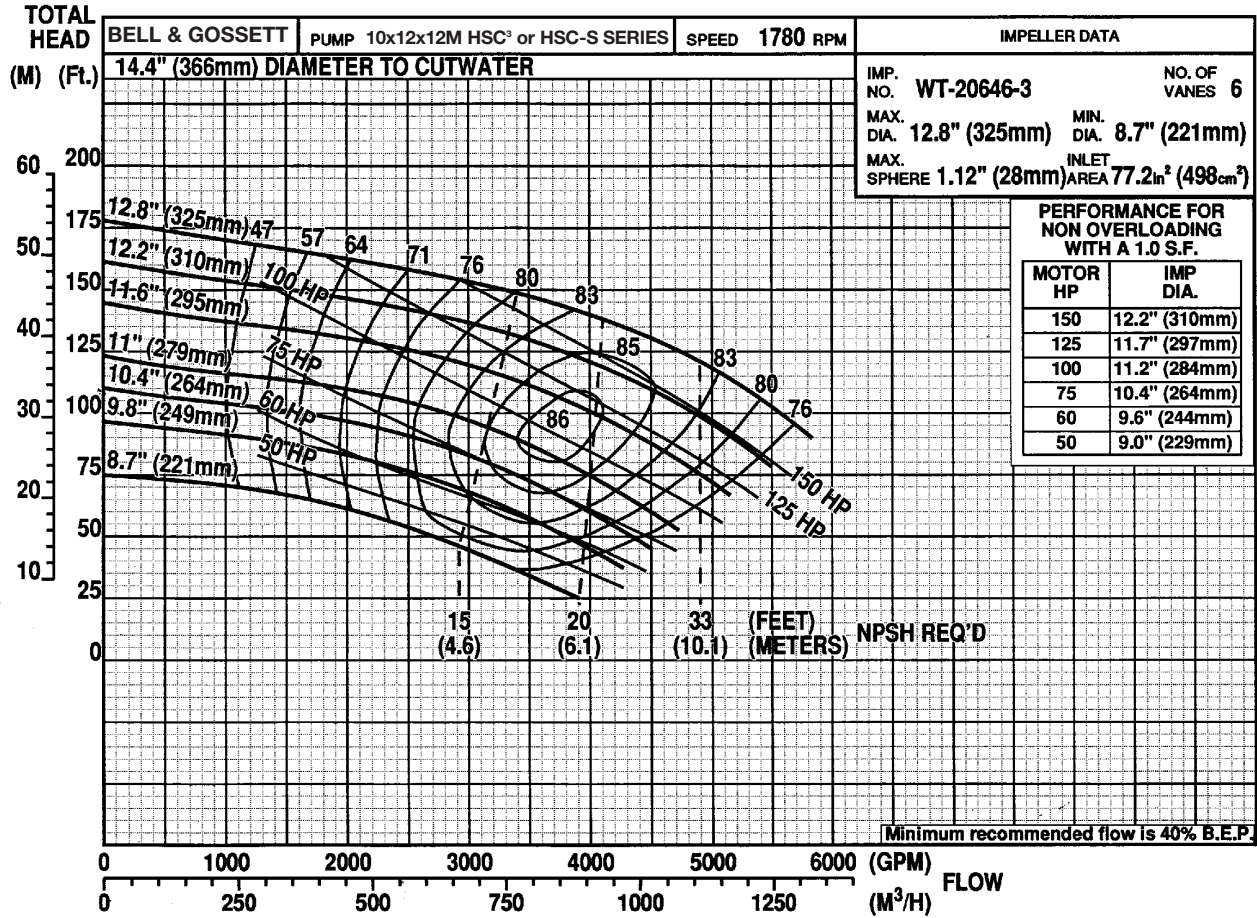
1750 RPM PUMP CURVES



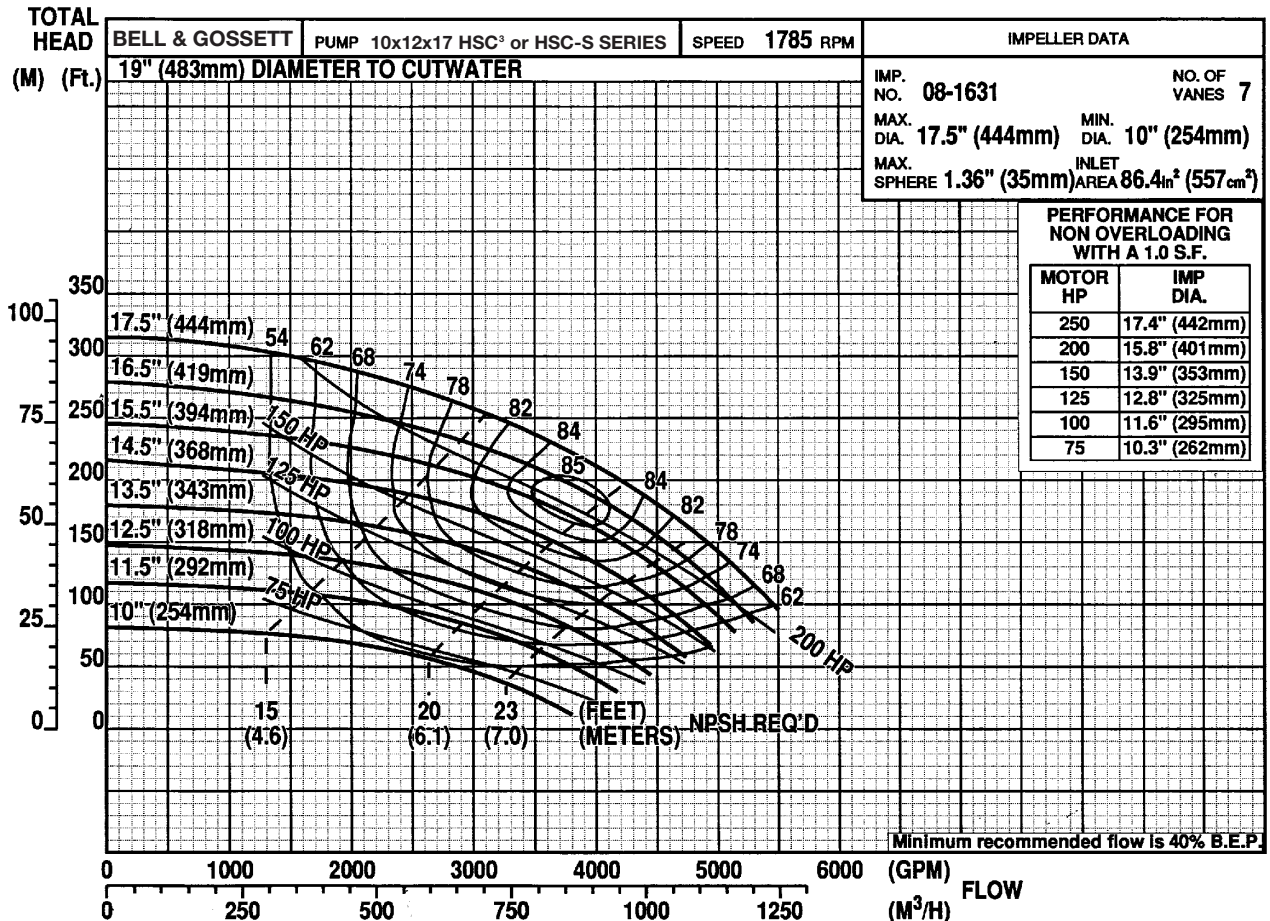
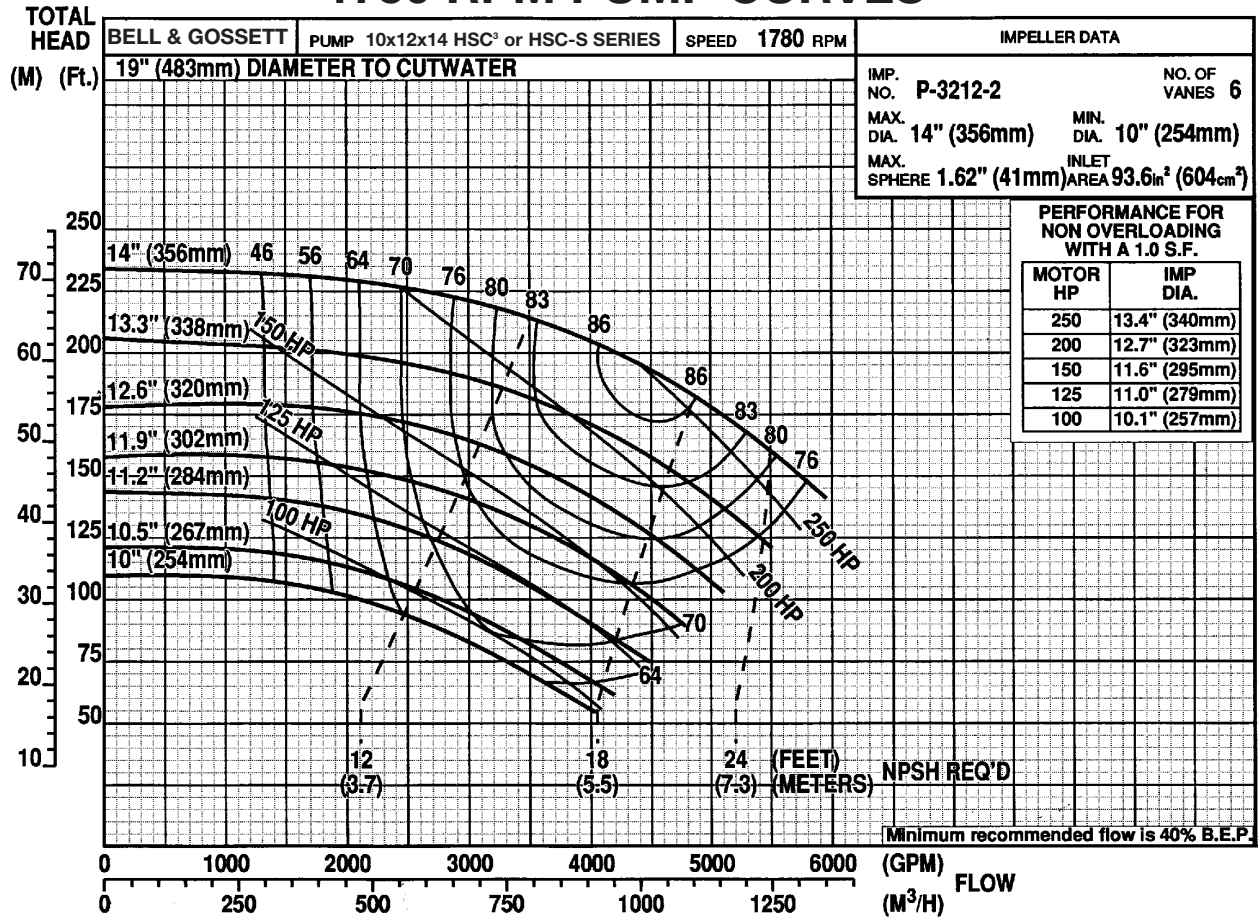
1750 RPM PUMP CURVES



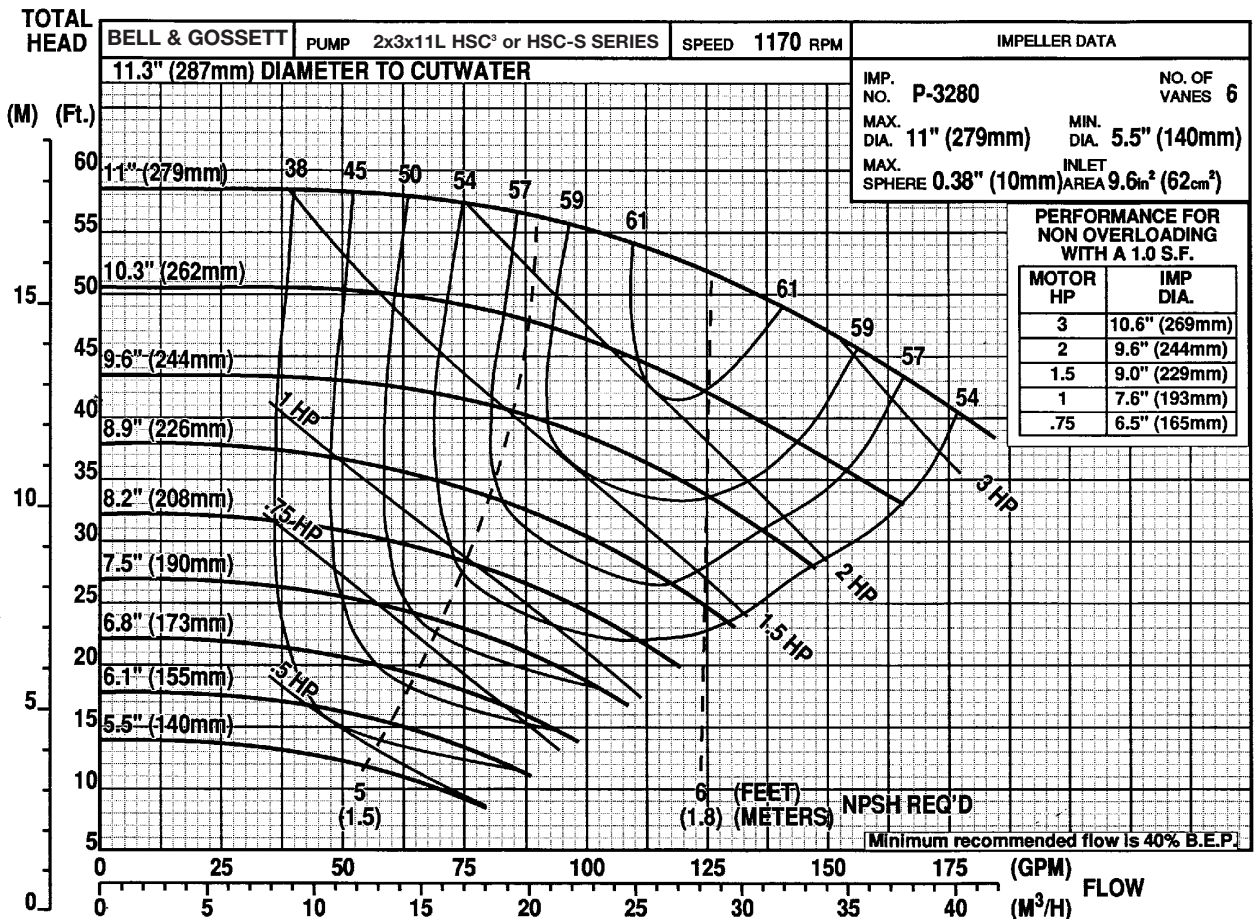
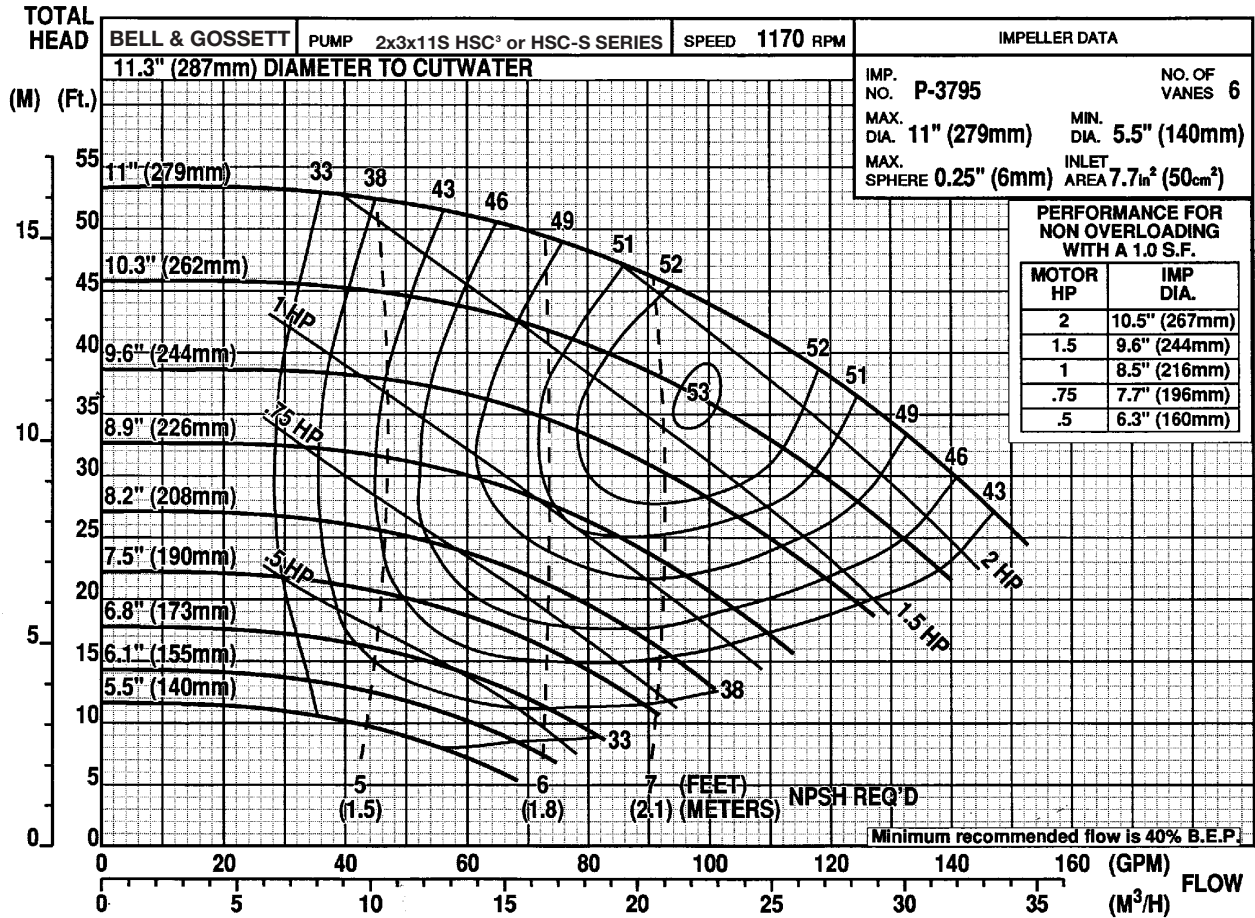
1750 RPM PUMP CURVES



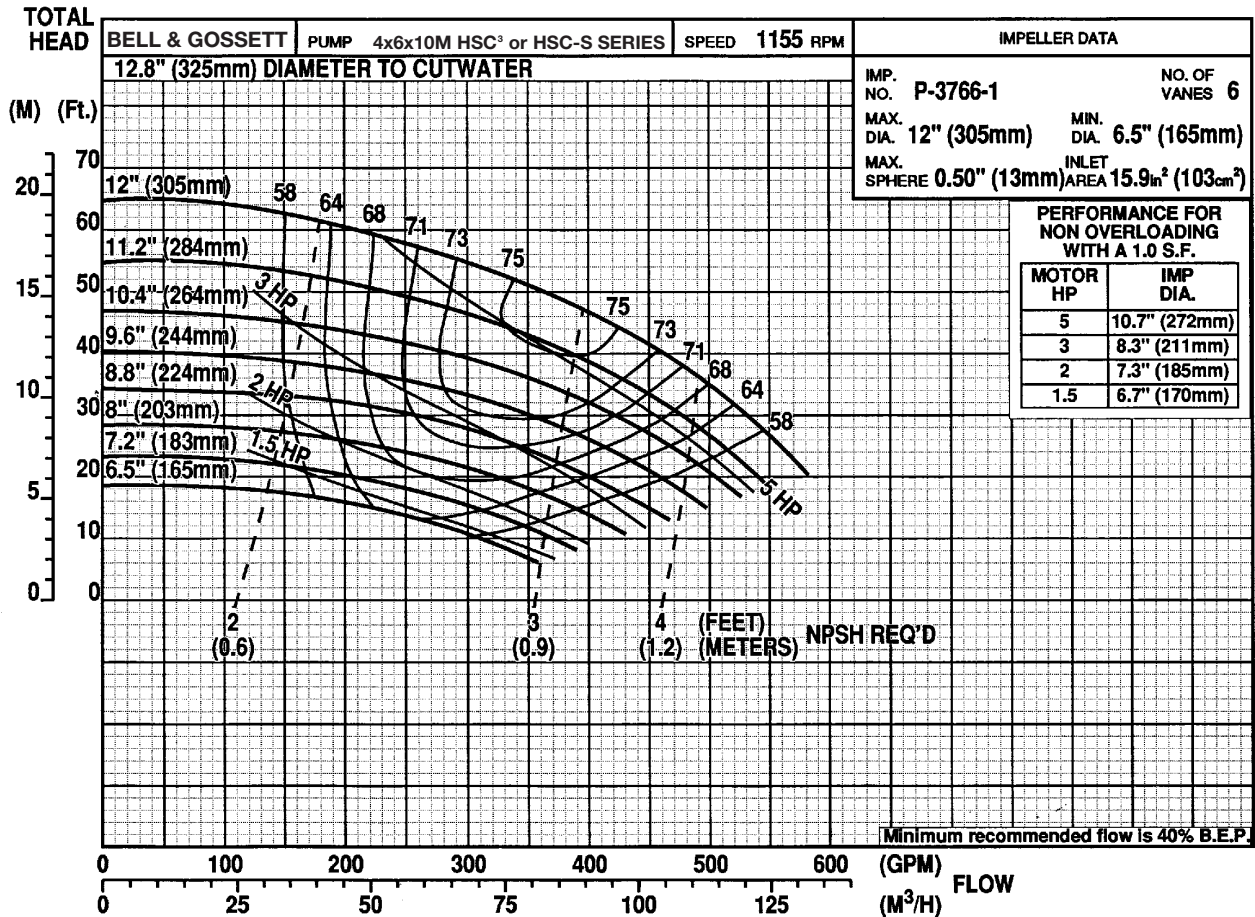
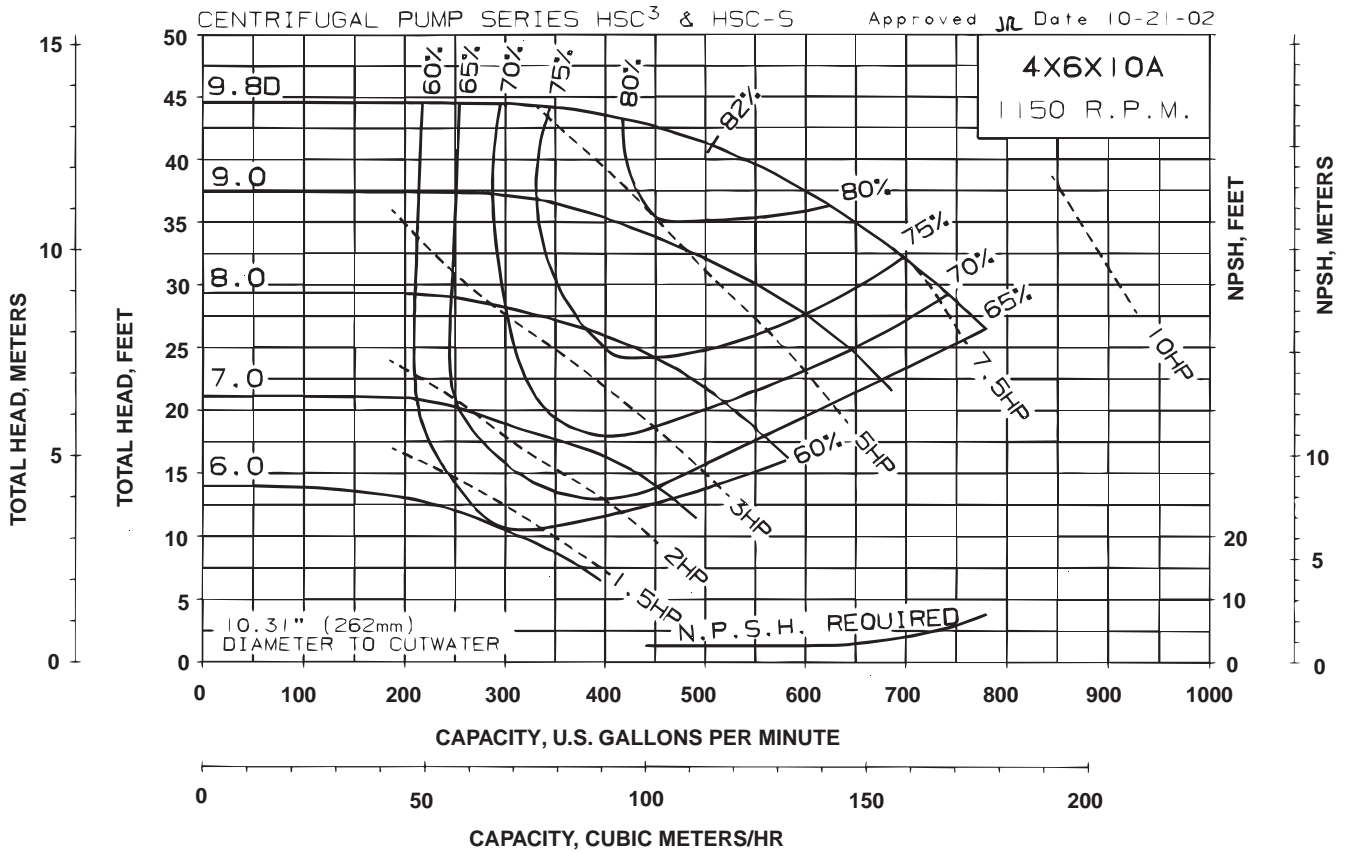
1750 RPM PUMP CURVES



1150 RPM PUMP CURVES

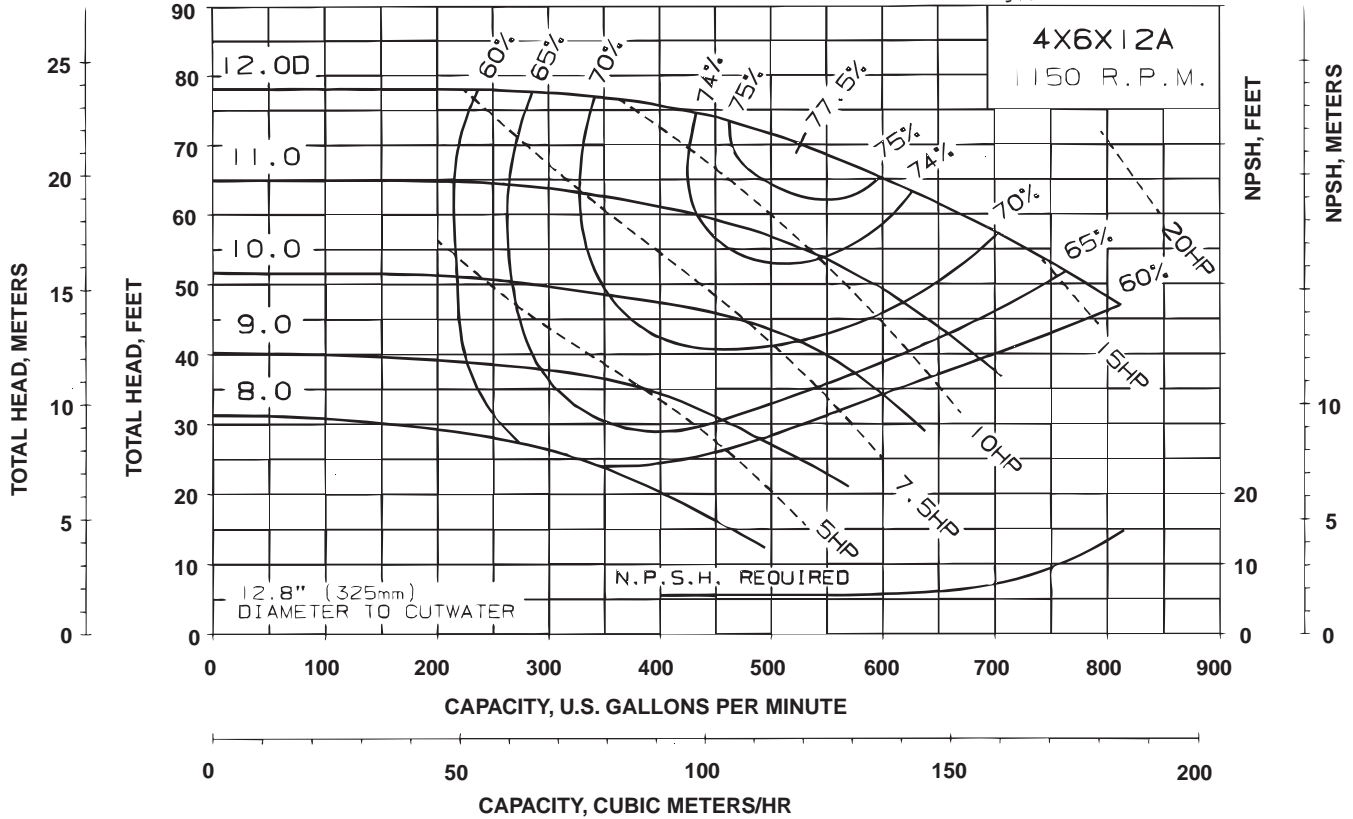


1150 RPM PUMP CURVES

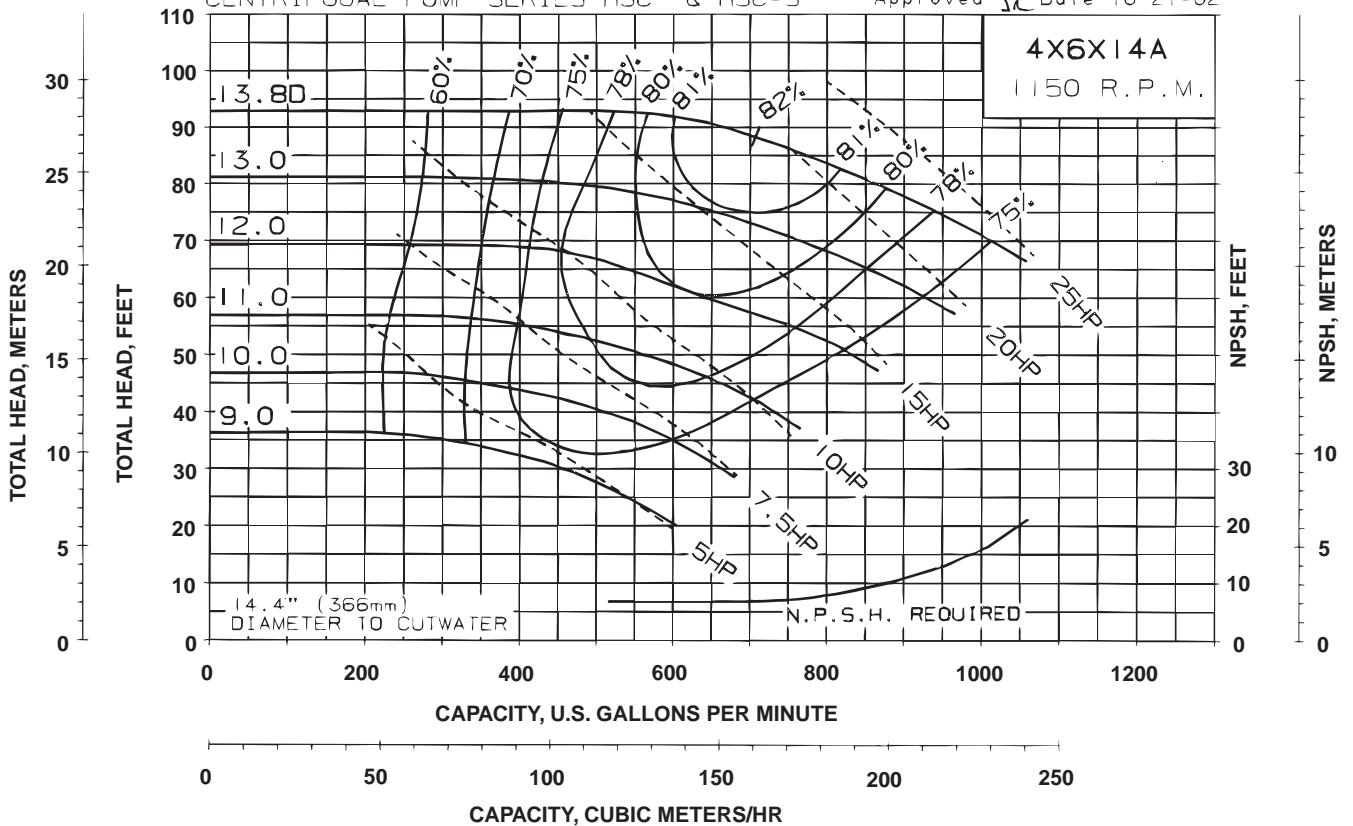


1150 RPM PUMP CURVES

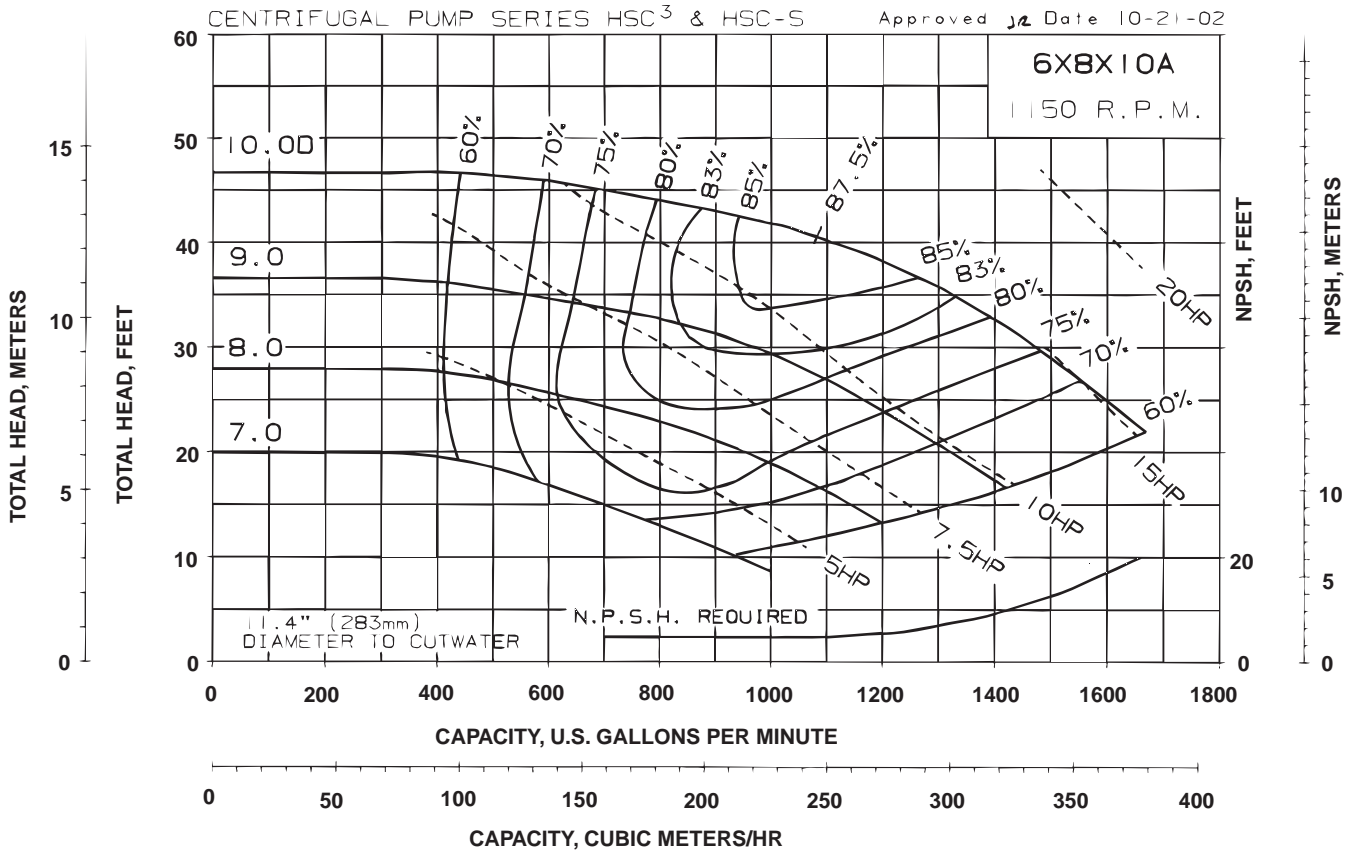
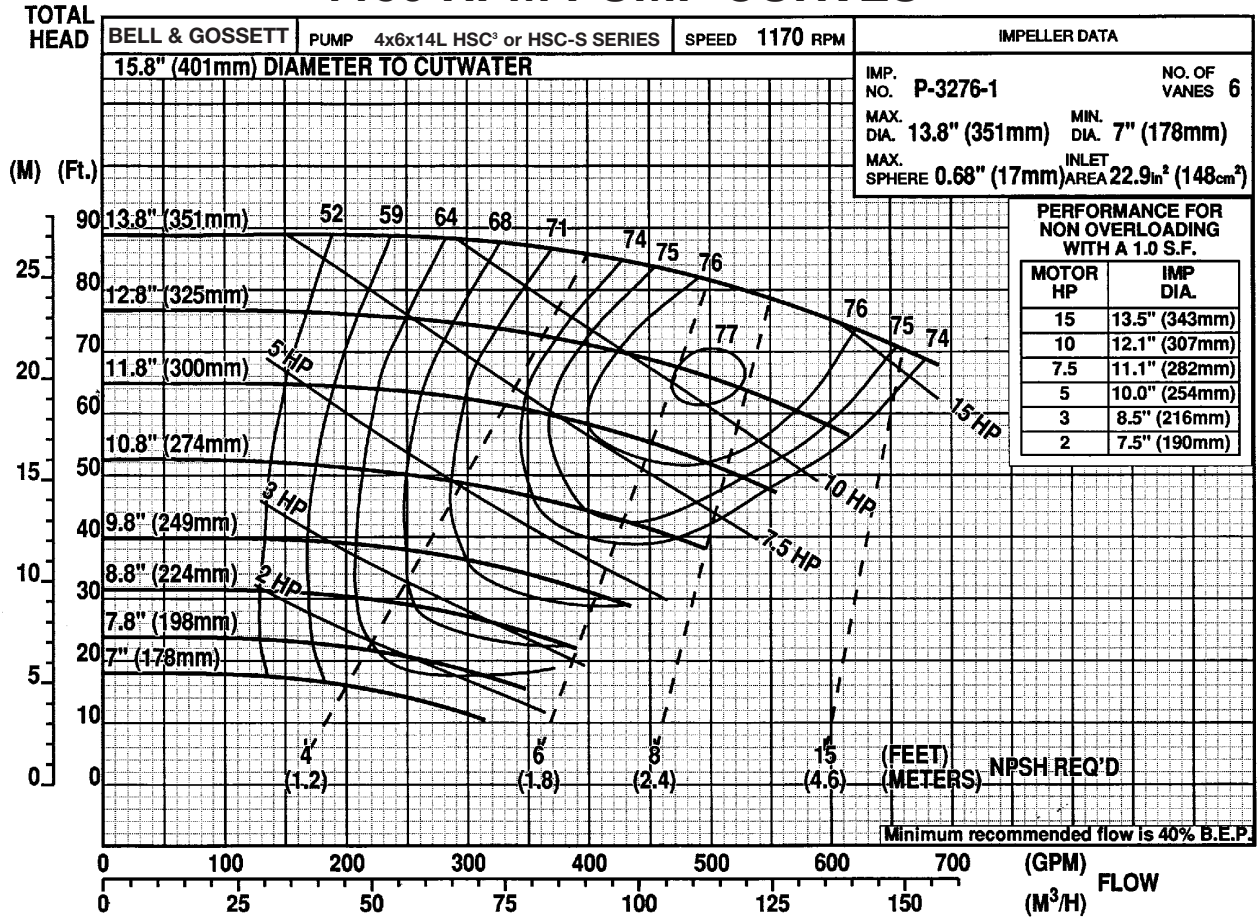
CENTRIFUGAL PUMP SERIES HSC³ & HSC-S Approved *JK* Date 10-21-02



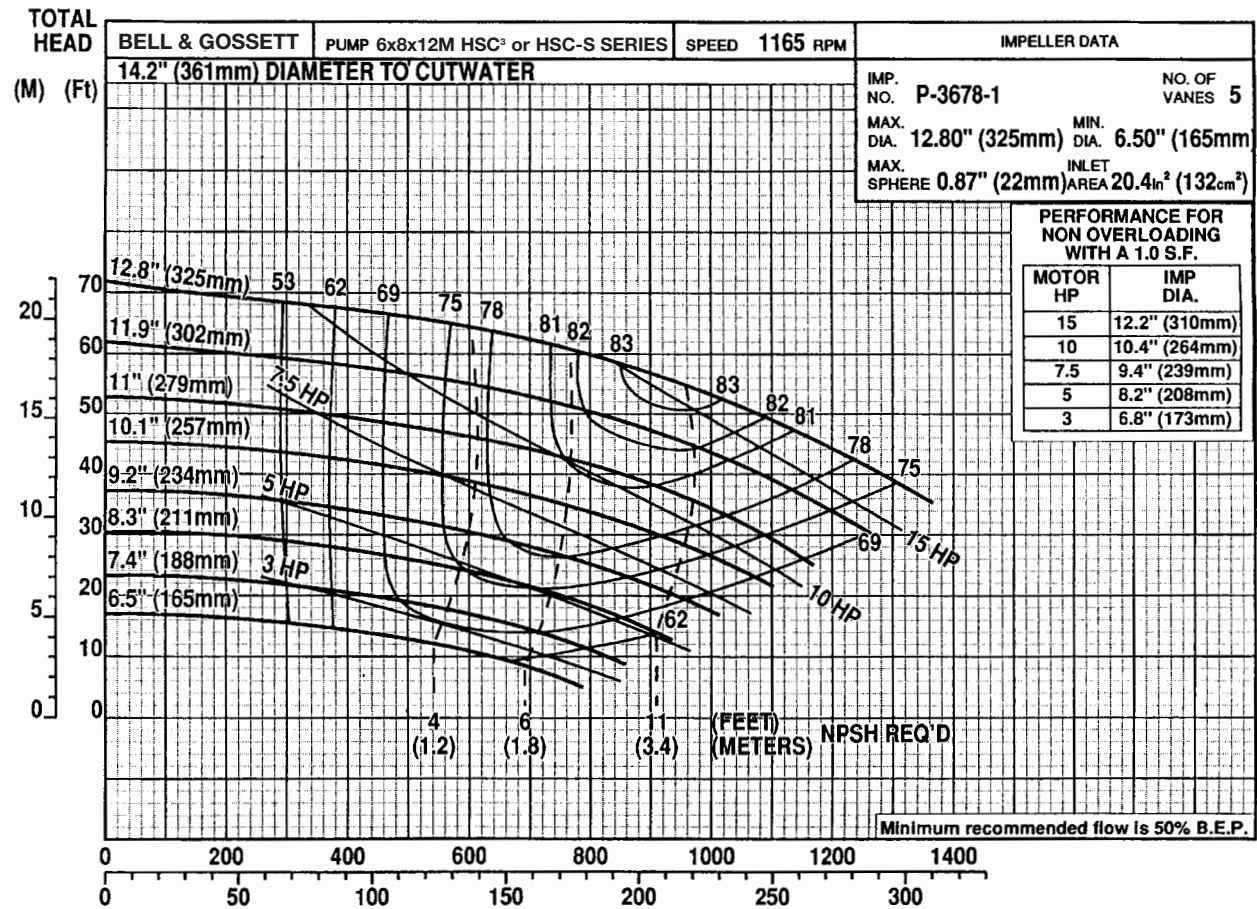
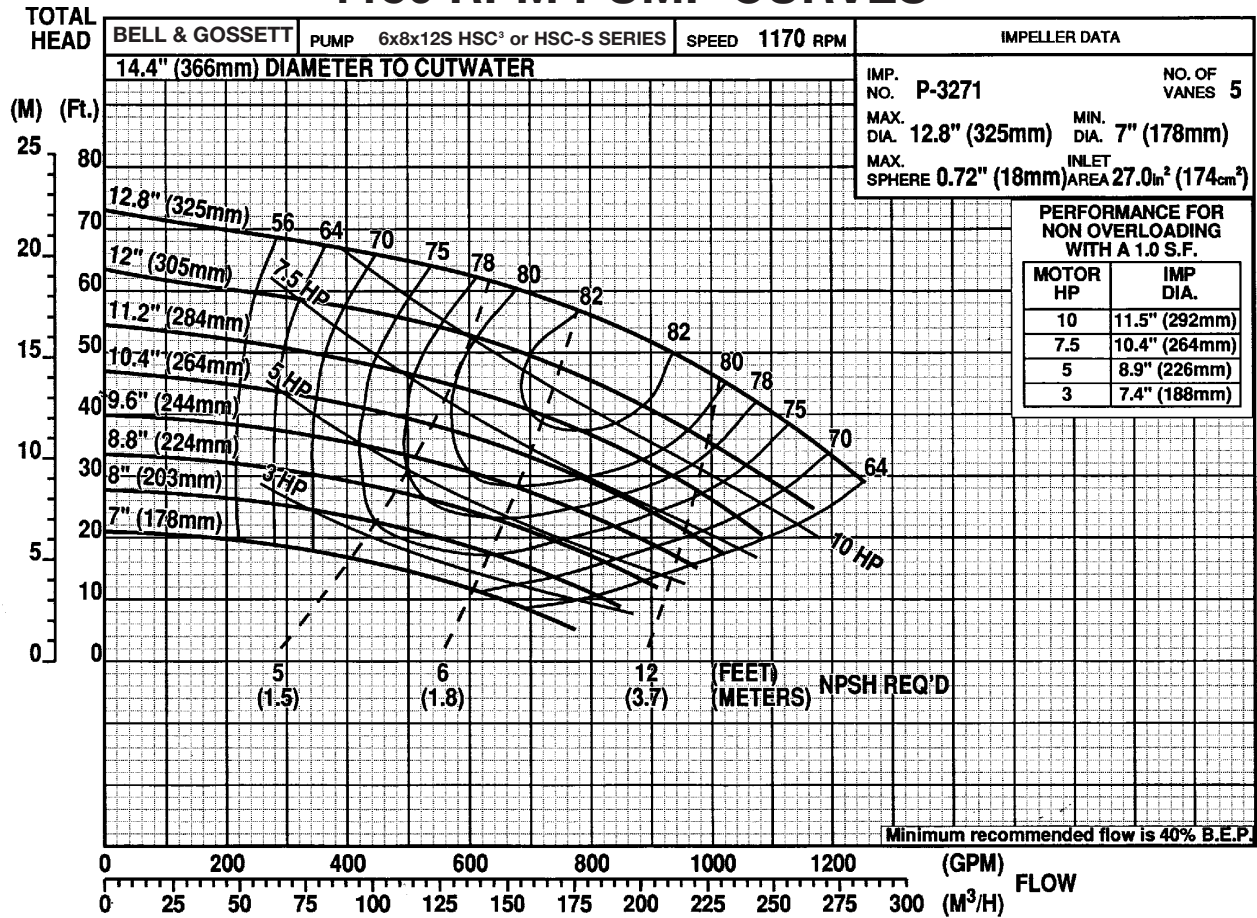
CENTRIFUGAL PUMP SERIES HSC³ & HSC-S Approved *JK* Date 10-21-02



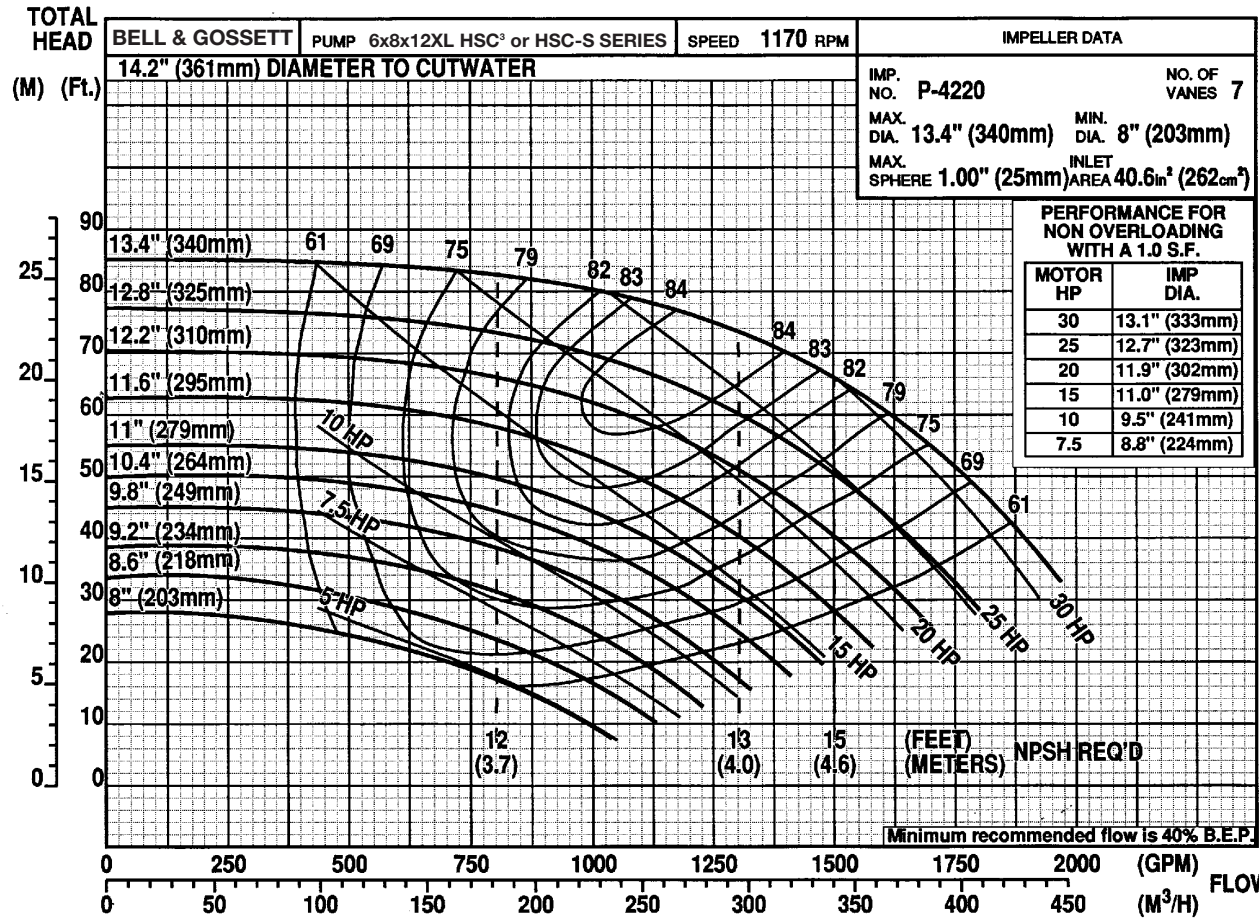
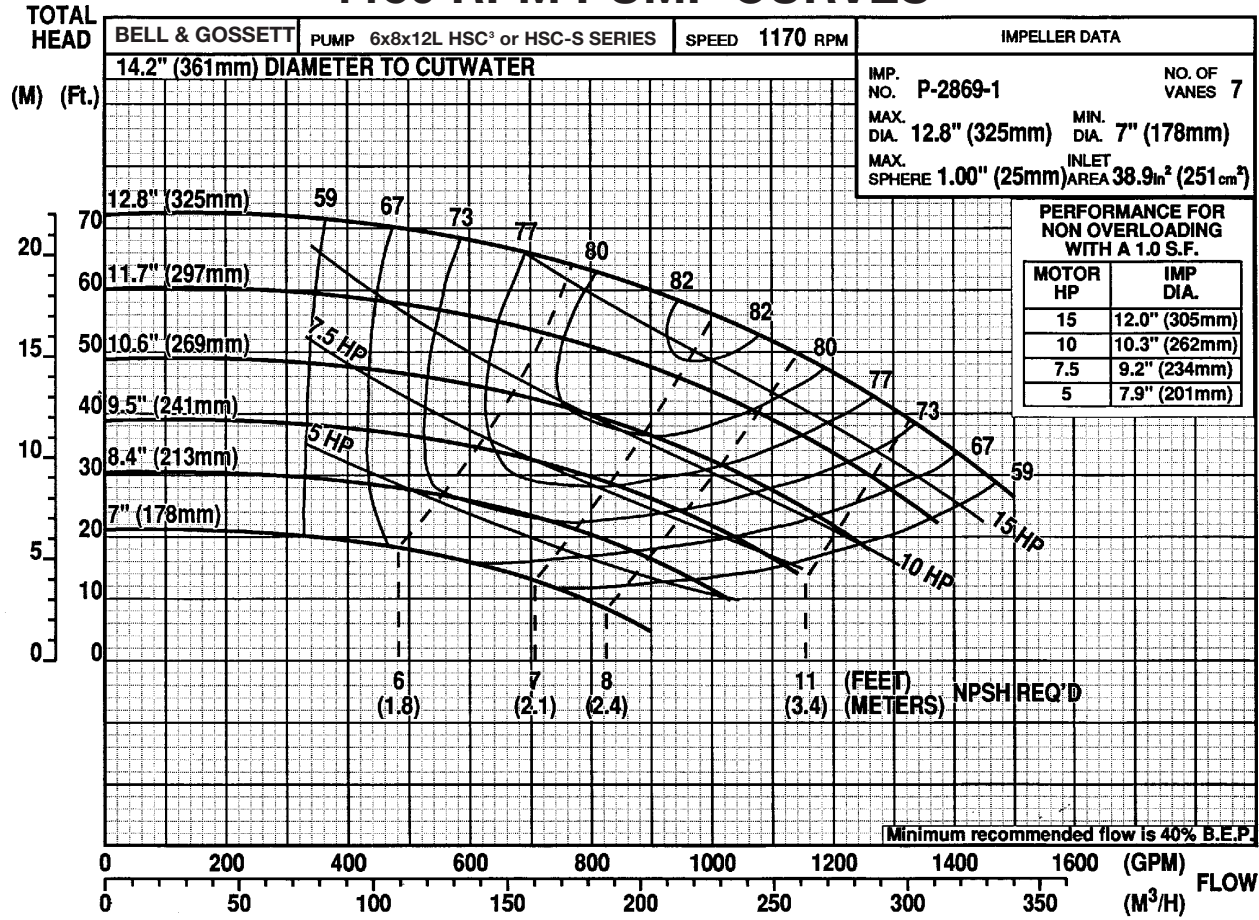
1150 RPM PUMP CURVES



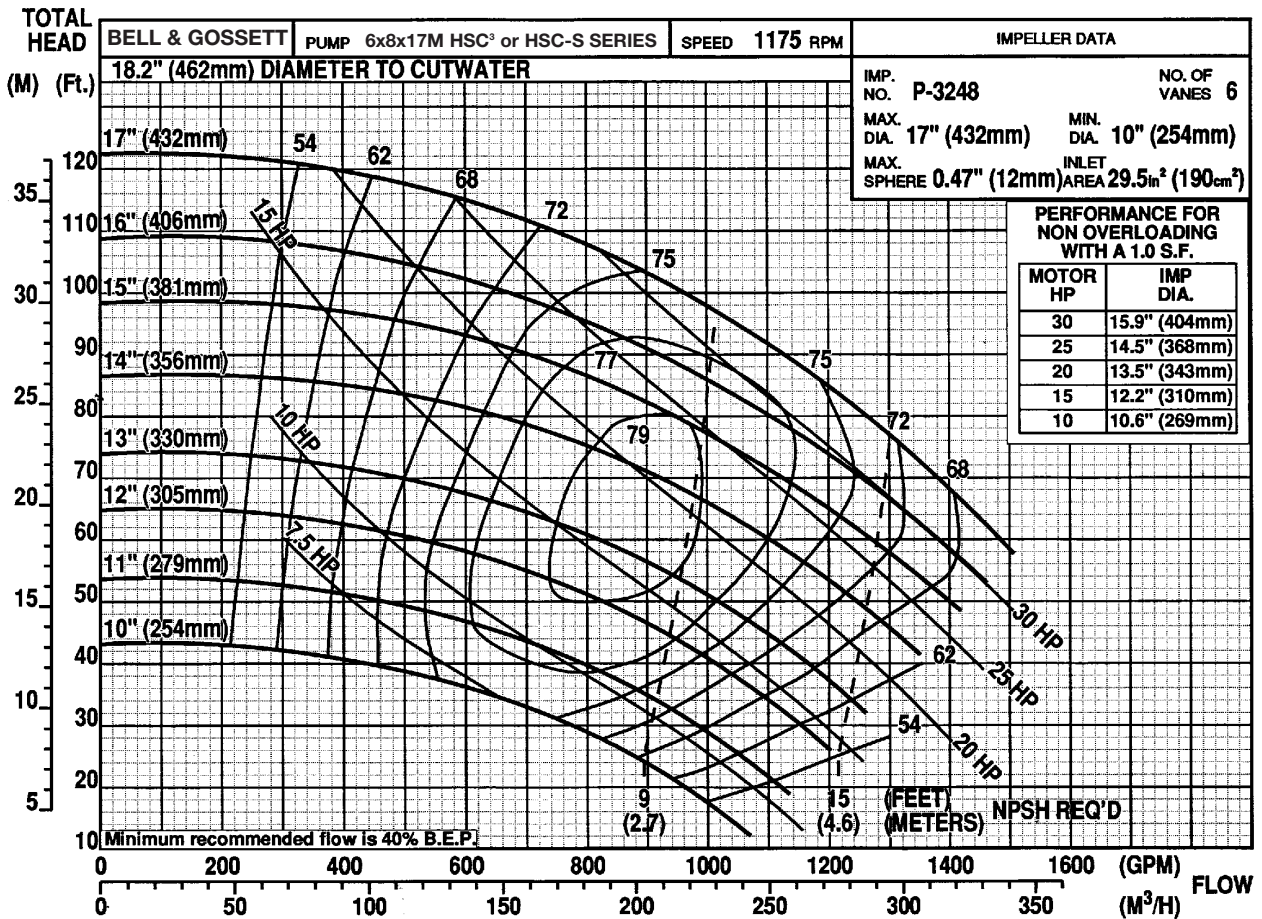
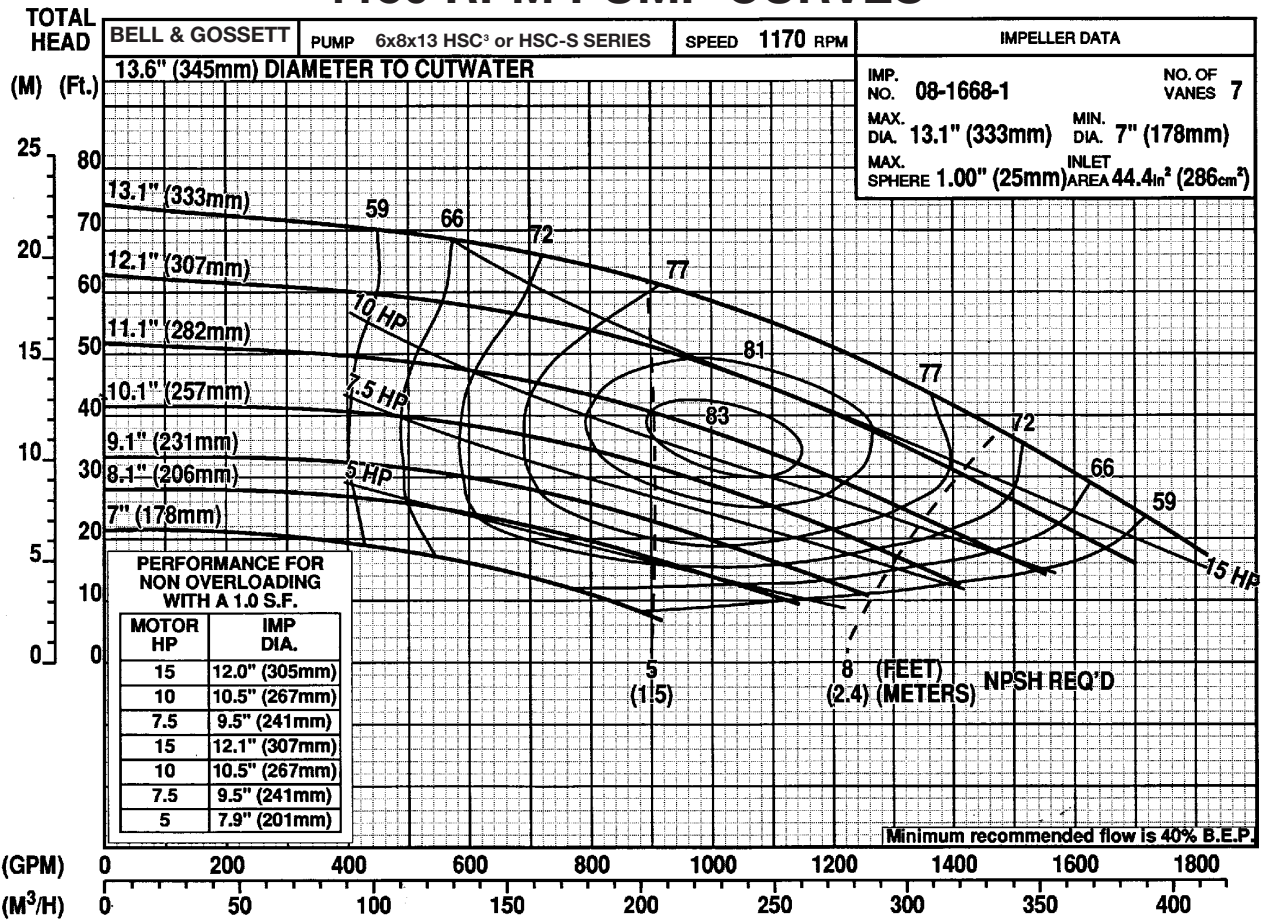
1150 RPM PUMP CURVES



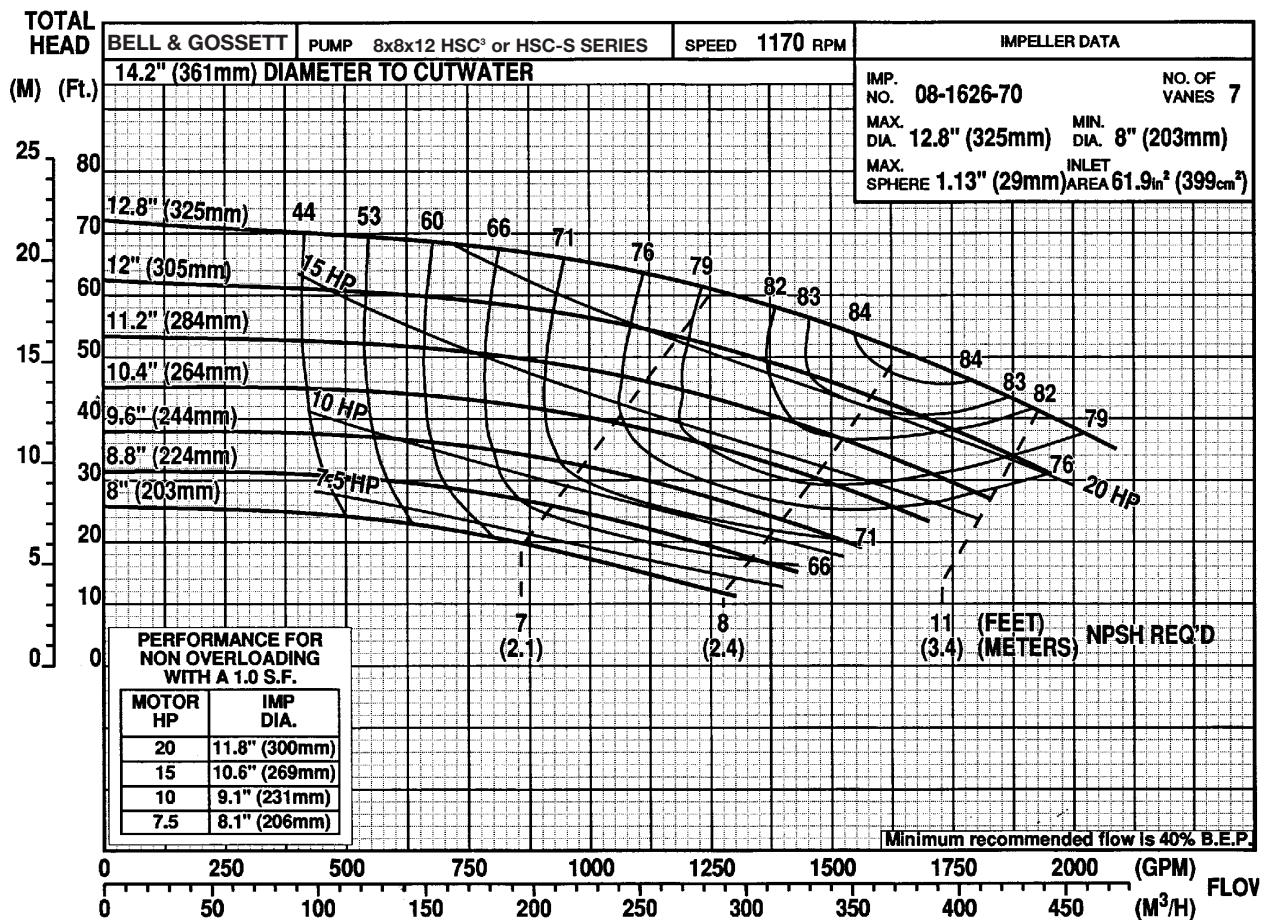
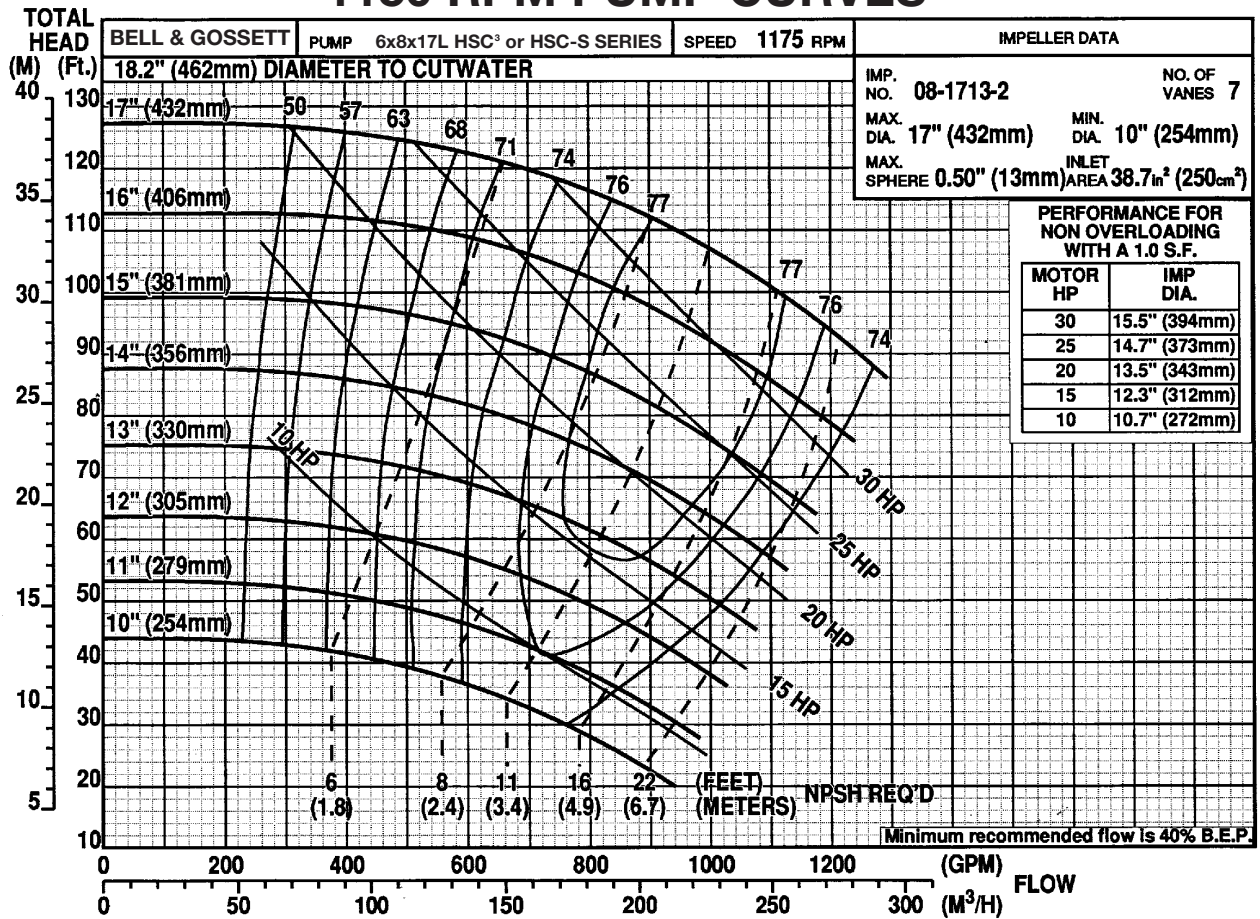
1150 RPM PUMP CURVES



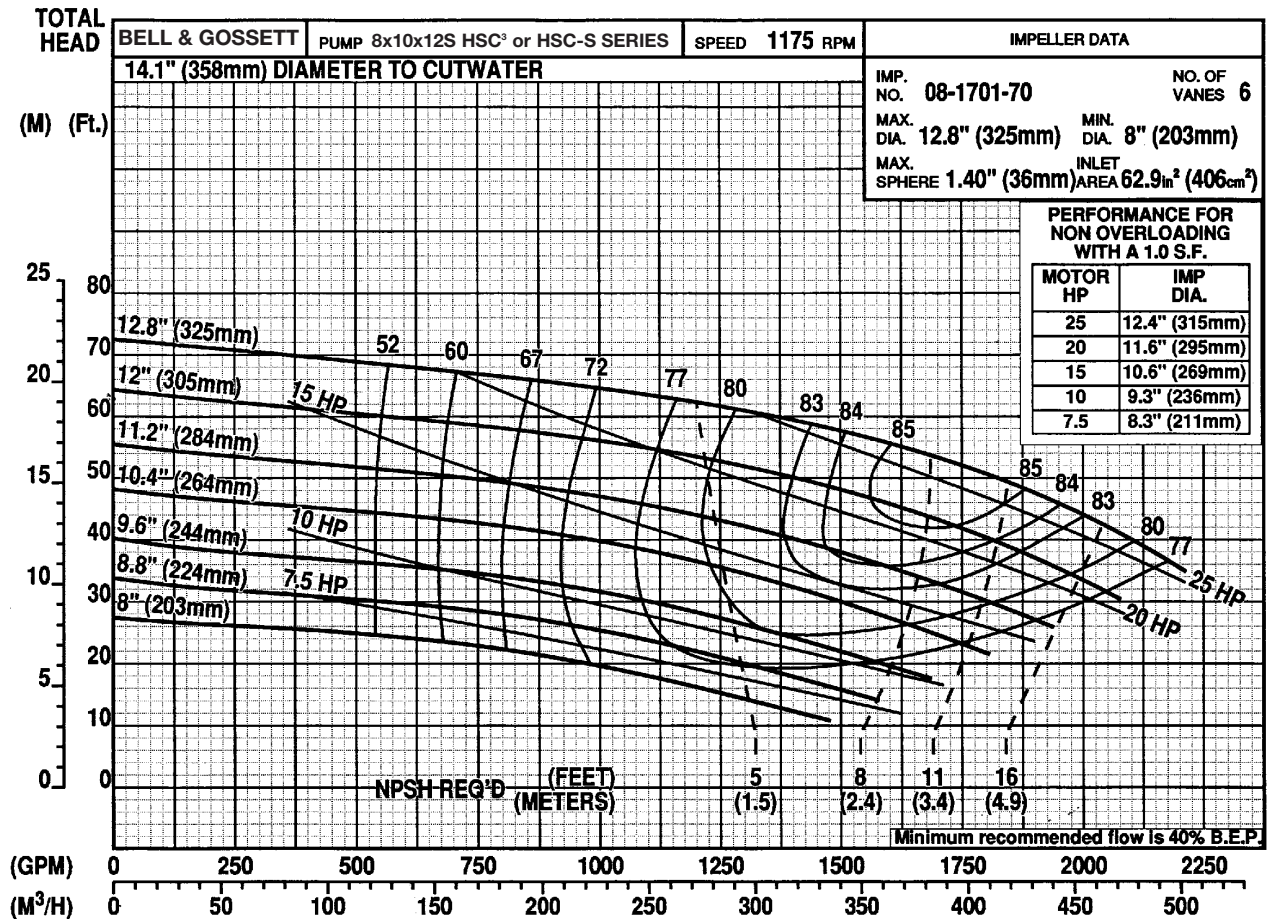
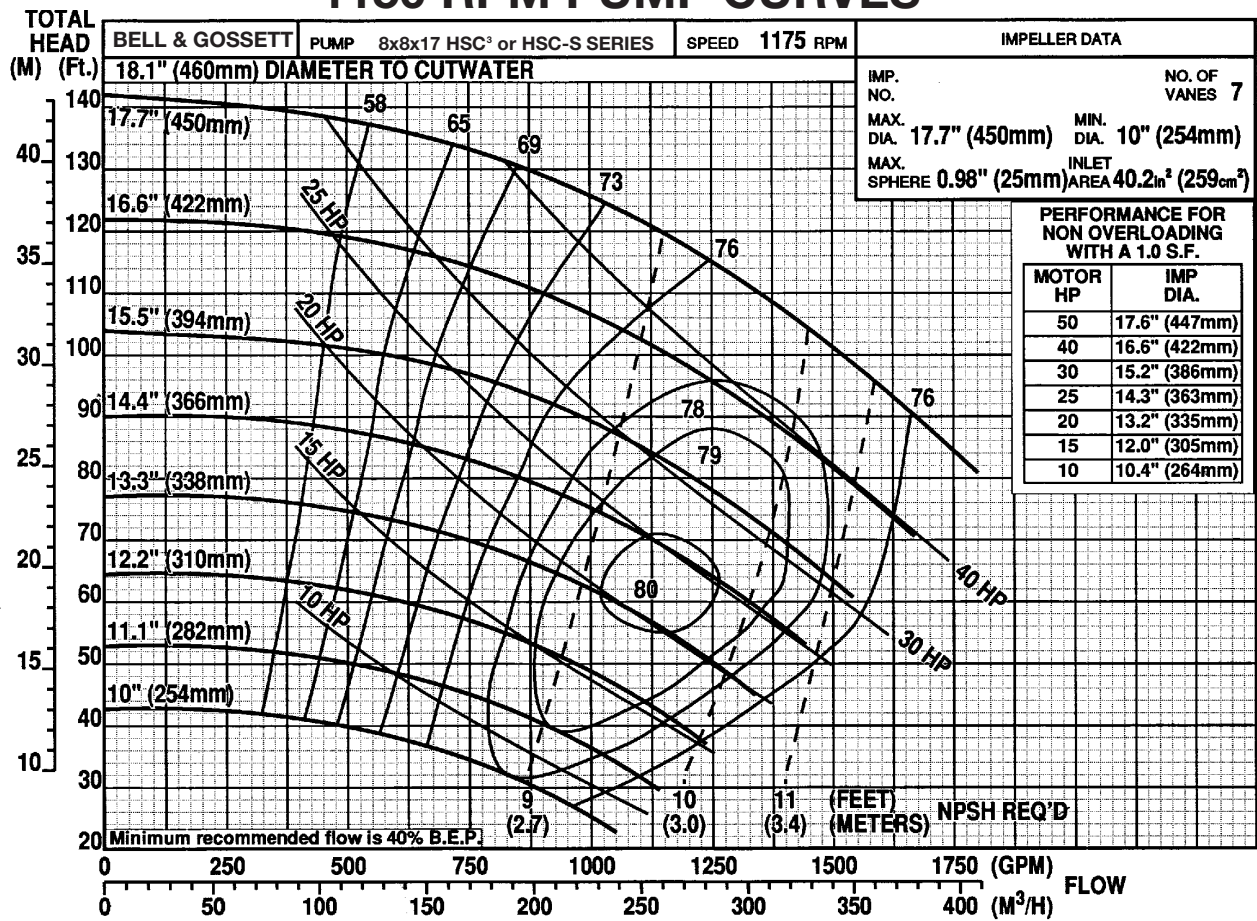
1150 RPM PUMP CURVES



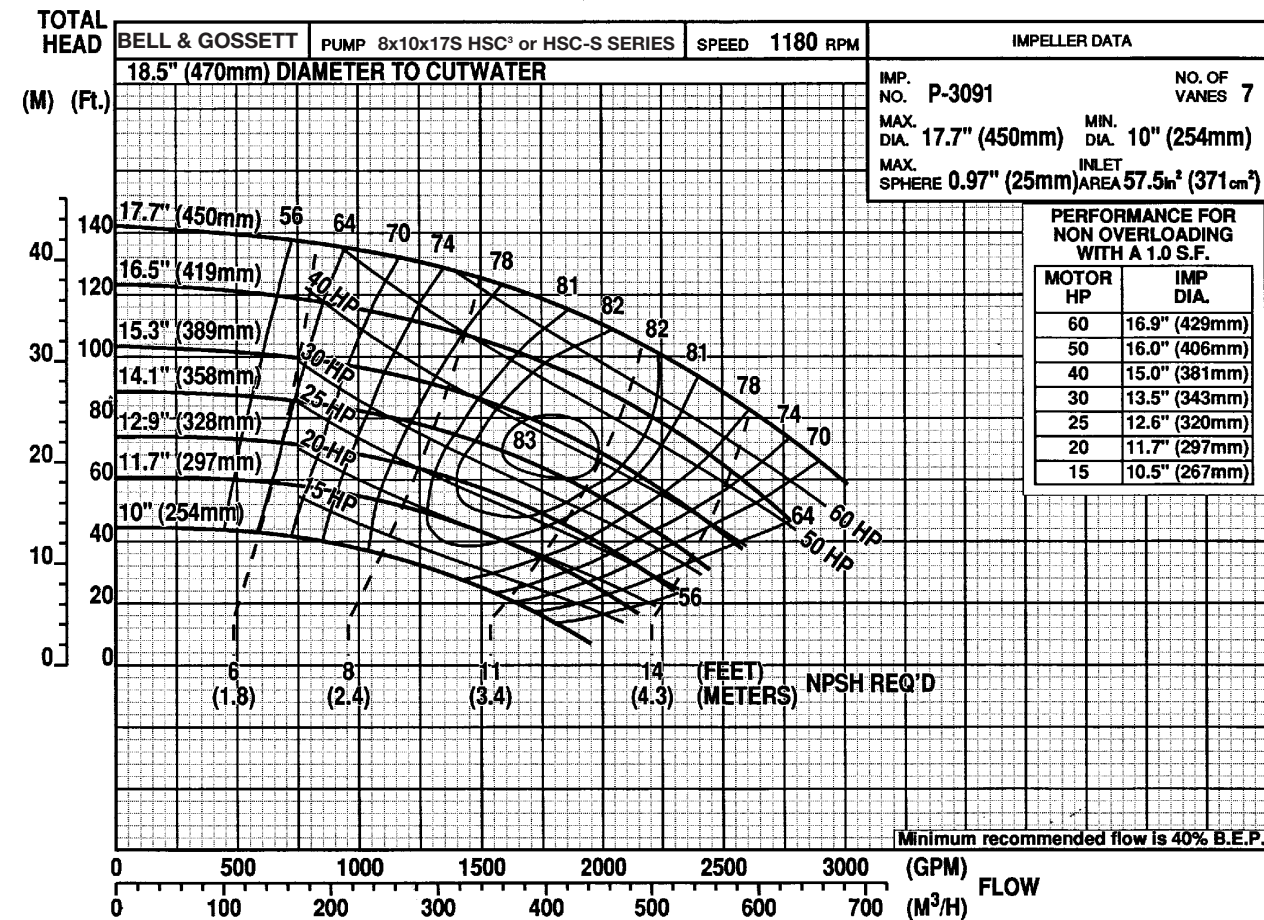
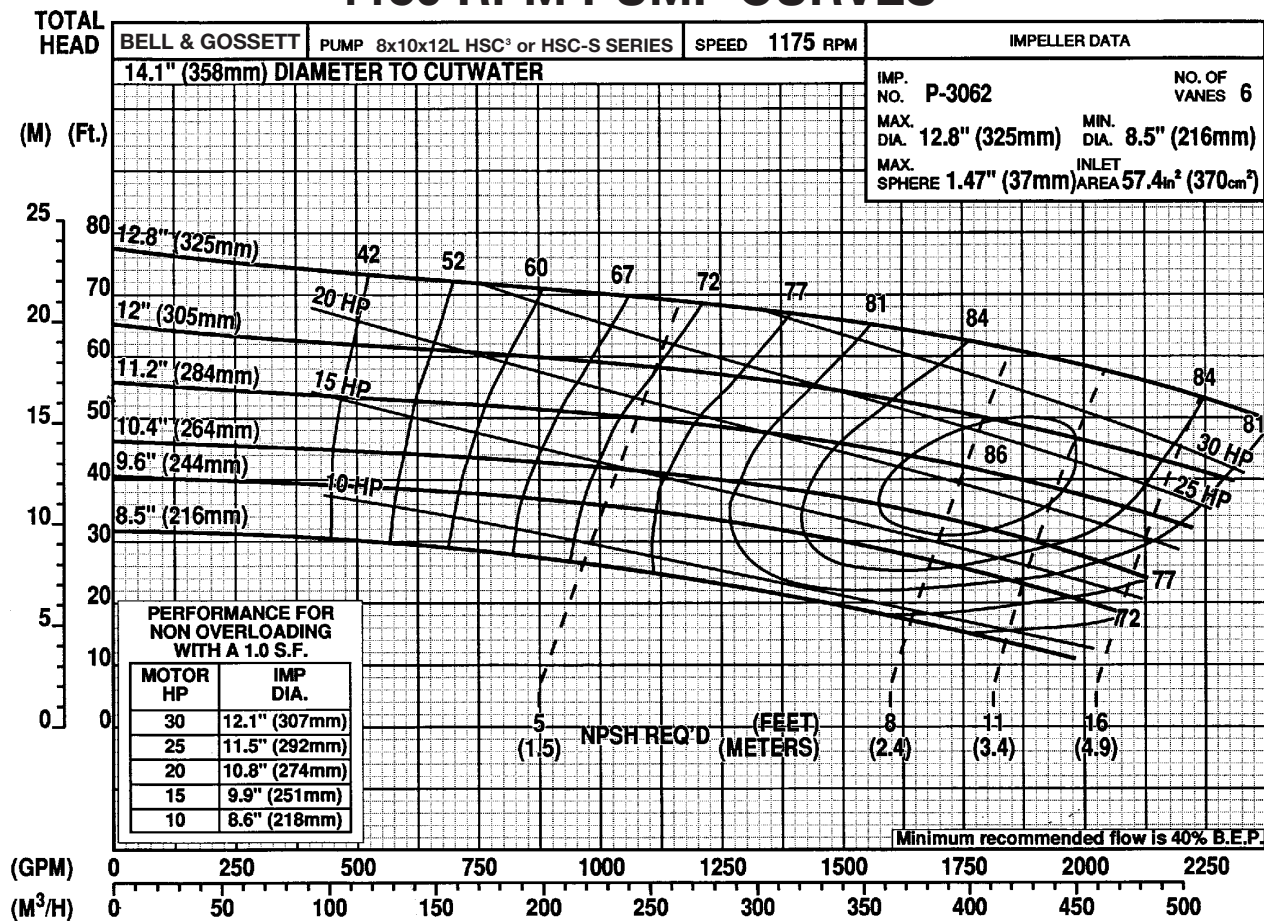
1150 RPM PUMP CURVES



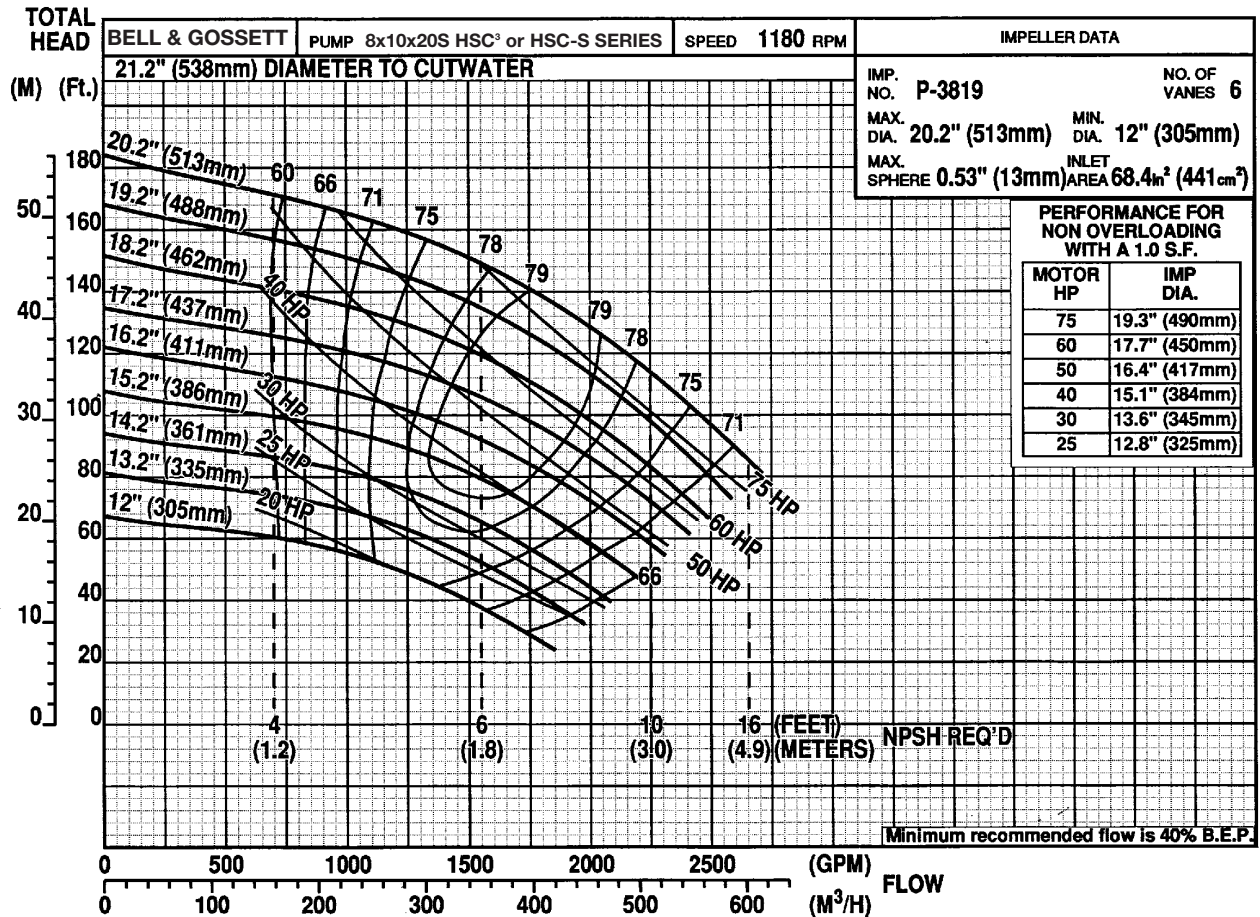
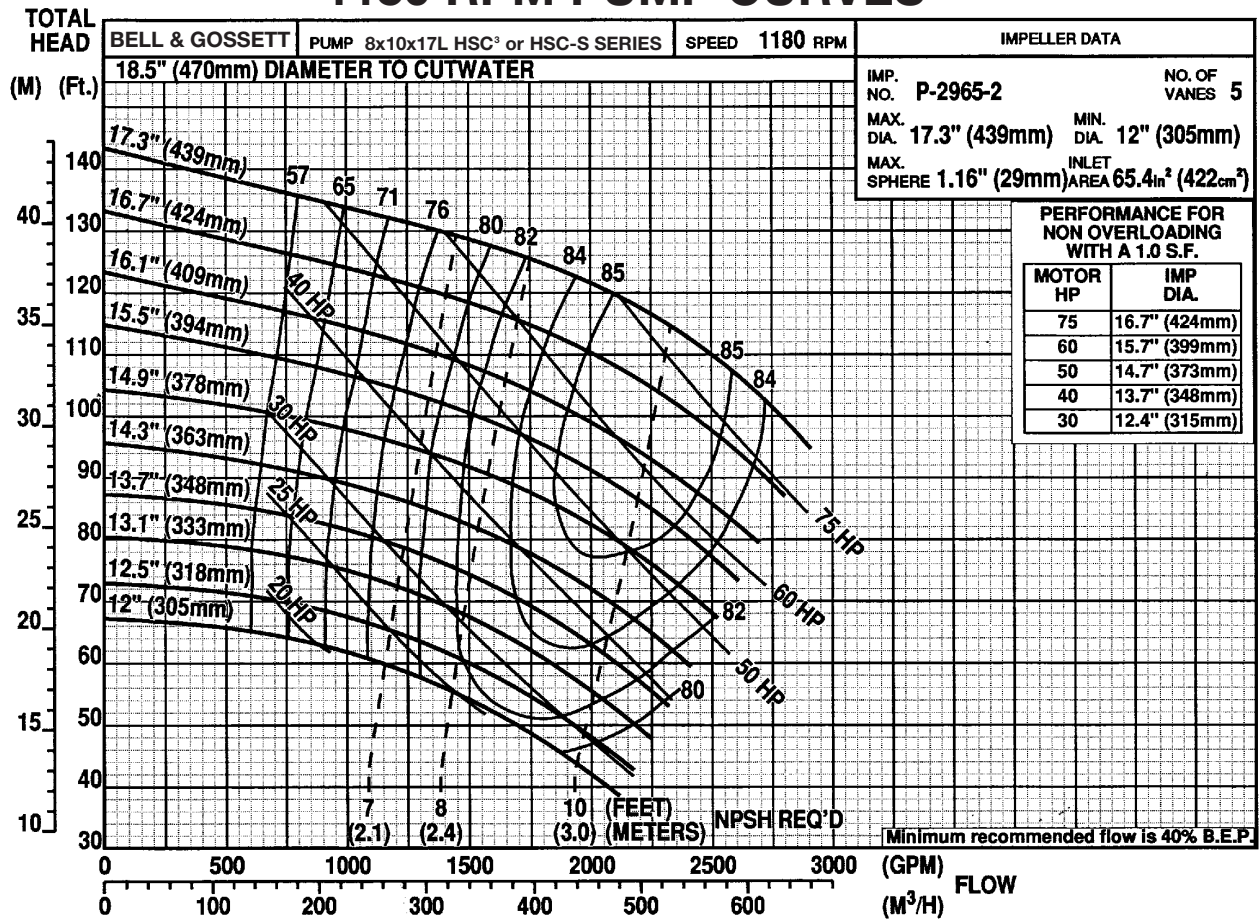
1150 RPM PUMP CURVES



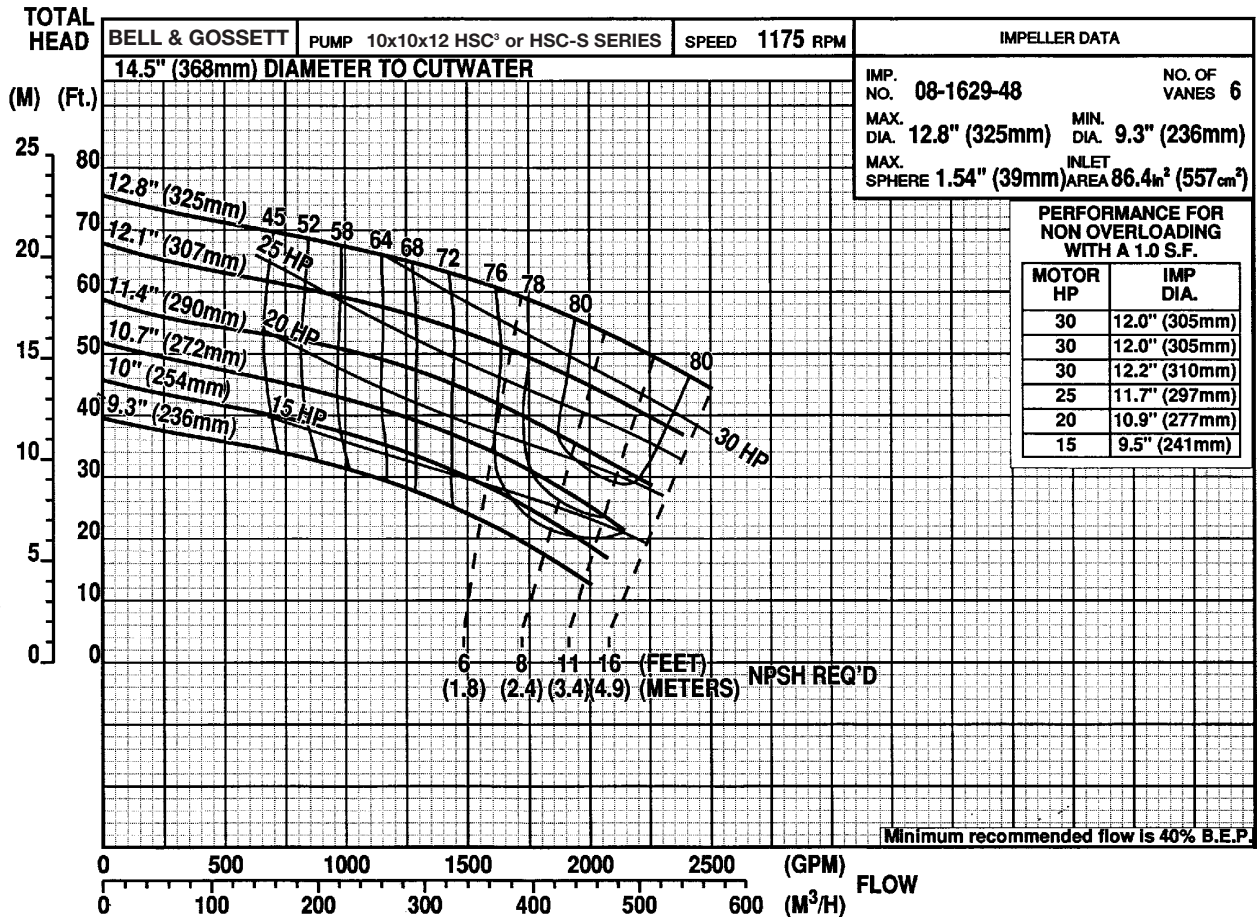
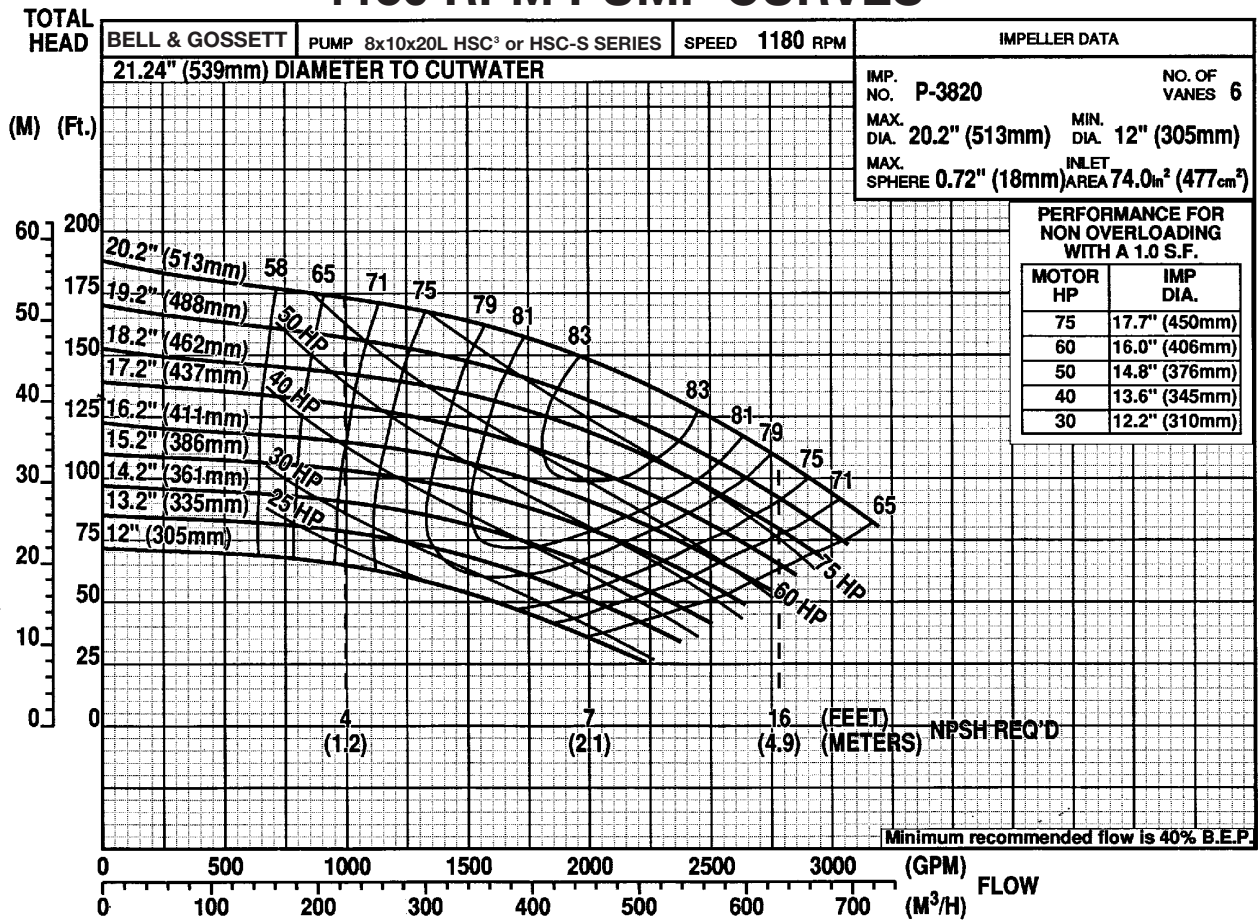
1150 RPM PUMP CURVES



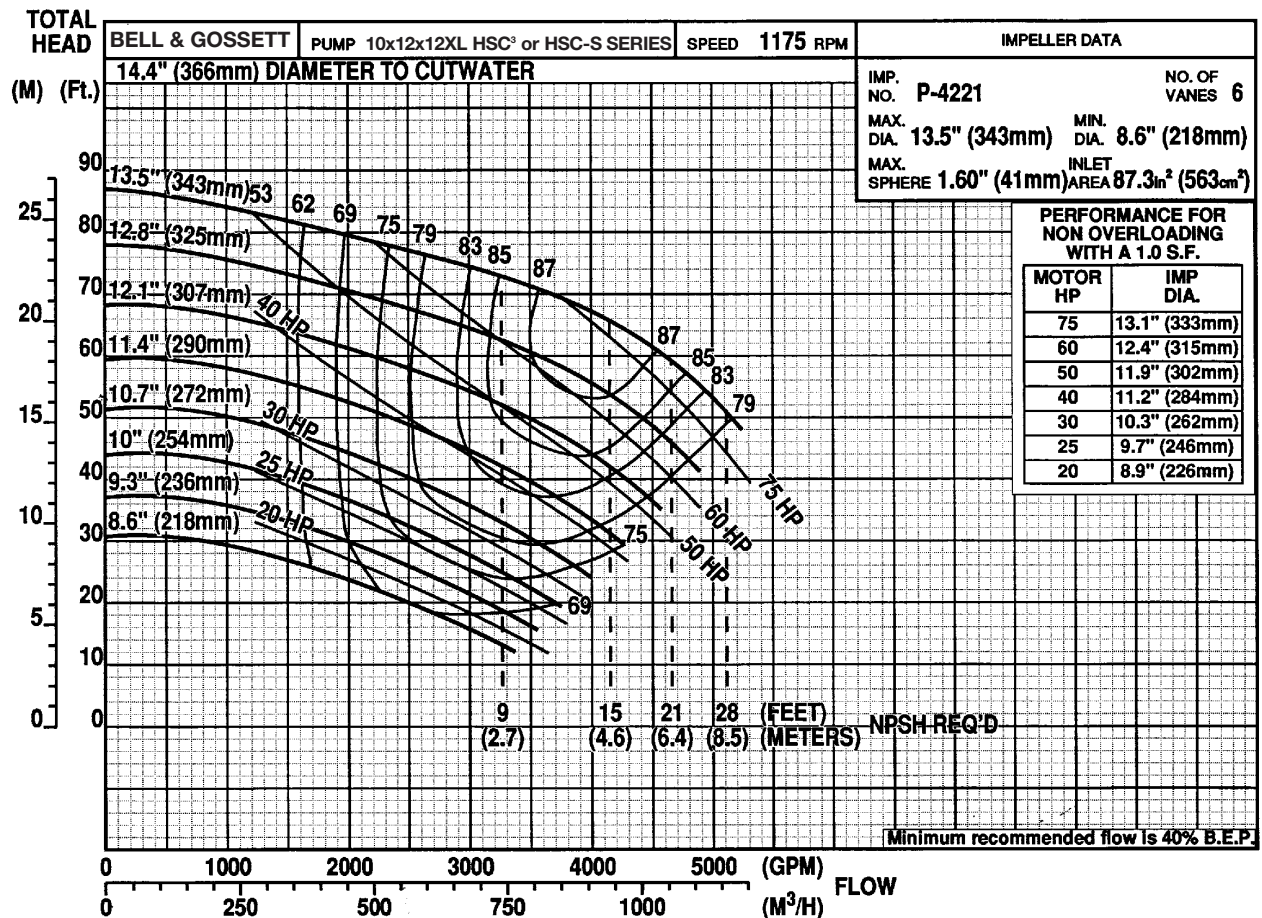
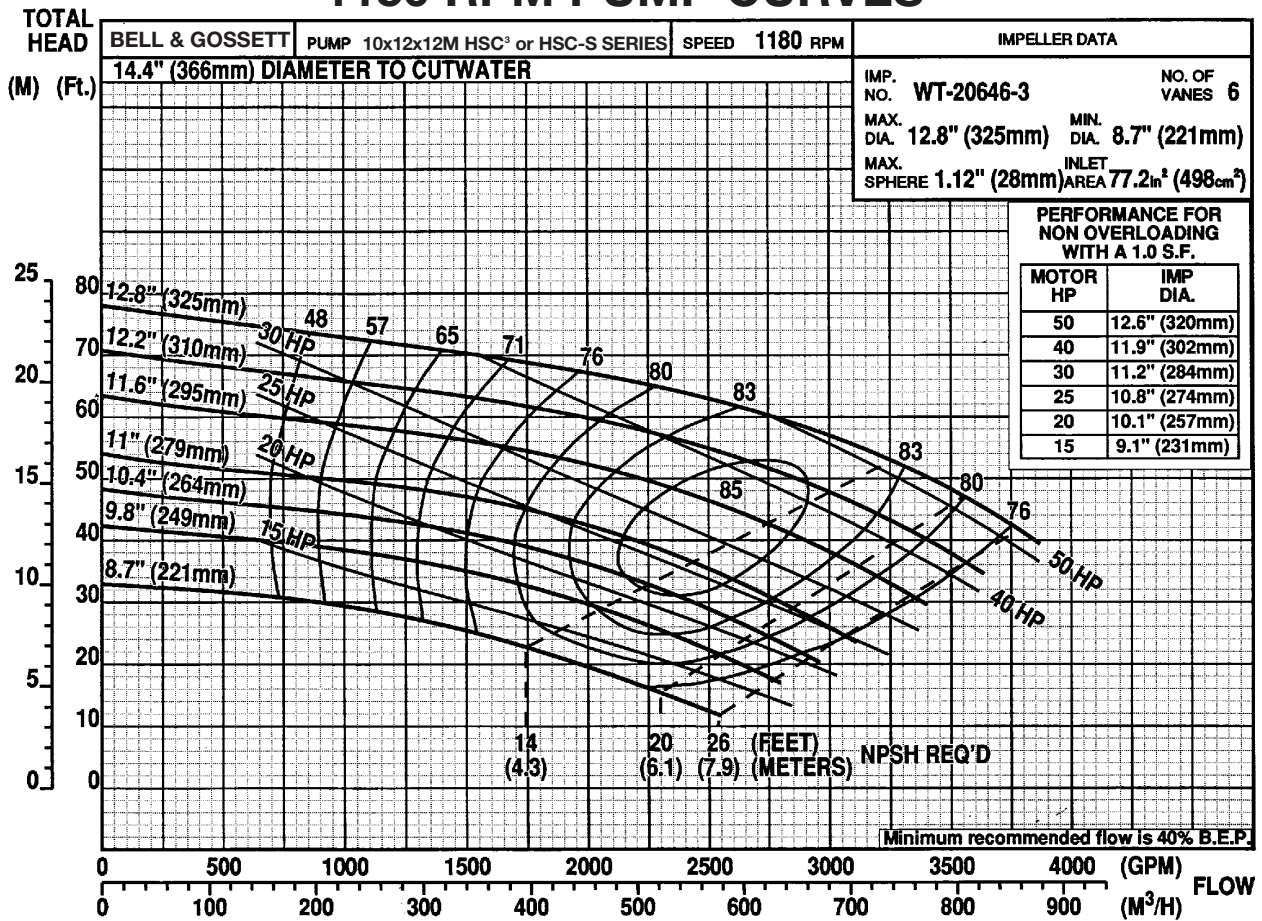
1150 RPM PUMP CURVES



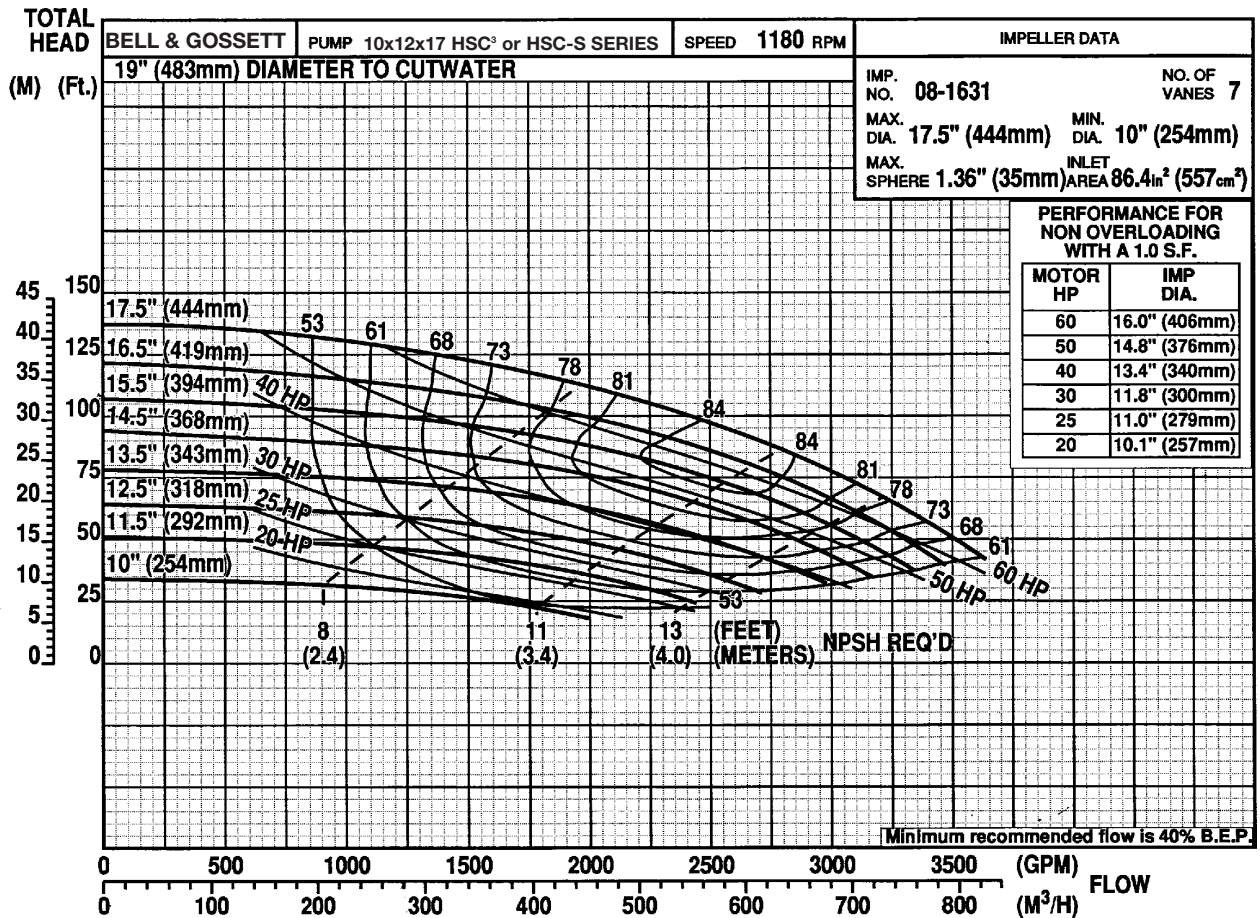
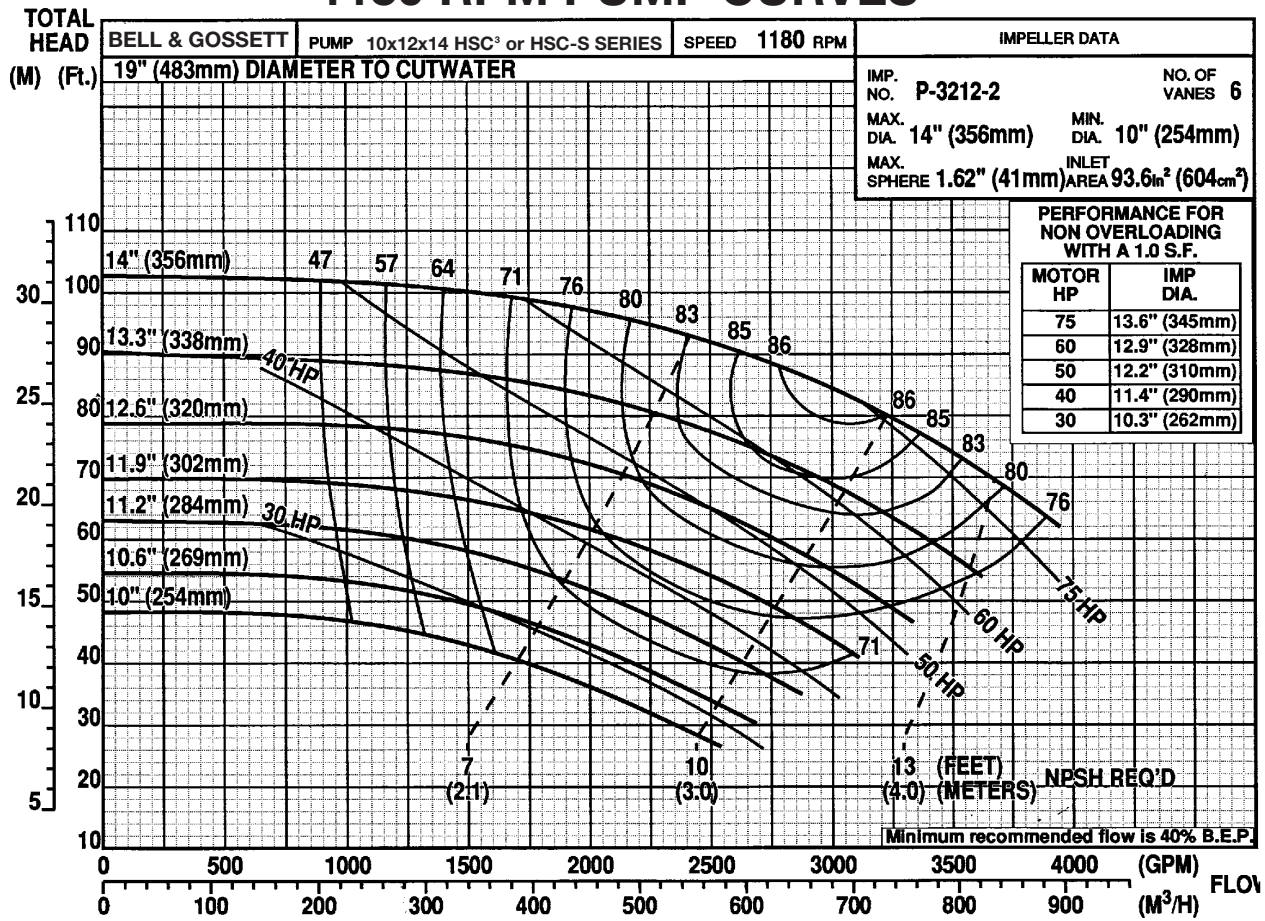
1150 RPM PUMP CURVES



1150 RPM PUMP CURVES



1150 RPM PUMP CURVES



YOUR AUTHORIZED B&G REPRESENTATIVE



Bell & Gossett

© COPYRIGHT 1999, 2003 BY ITT INDUSTRIES, INC.
PRINTED IN U.S.A. 4-03

USA
Bell & Gossett
8200 N. Austin Avenue
Morton Grove, IL 60053
Phone: (847) 966-3700
Facsimile: (847) 966-9052
<http://www.bellgossett.com>



**ISO 9001
Certified**

INTL.
Bell & Gossett / Export Dept.
8200 N. Austin Avenue
Morton Grove, IL 60053
Phone: (847) 966-3700
Facsimile: (847) 966-8366
<http://www.bellgossett.com>

CANADA
Fluid Products Canada
55 Royal Road
Guelph, Ontario,
N1H 1T1, Canada
Phone: (519) 821-1900