


Submittal Data

	JOB or CUSTOMER:	
	ENGINEER:	
	CONTRACTOR:	
	SUBMITTED BY:	DATE:
	APPROVED BY:	DATE:
	ORDER NO:	DATE:
	SPECIFICATION REF:	

QUANTITY	TAG NO.	MODEL NO.	GPM	FEET	LEAD LENGTH	COMMENTS

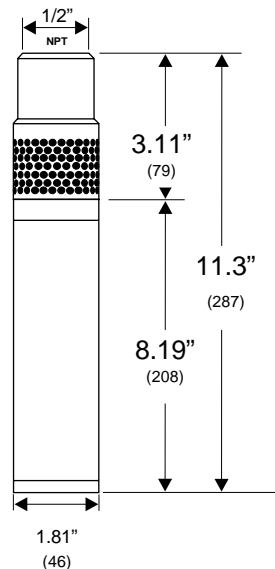
Technical Data

Motor Type: Water-Filled, variable speed submersible
 Maximum Fluid Temperature: 86. F (30. C)
 Minimum Fluid Temperature: 34. F (1. C)
 Maximum Input Power: 1.5 KW (2HP)
 Maximum Motor Voltage: 3PH X 220 Volts at 400Hz
 Maximum Motor Current: 5.5 Amps
 Discharge Size: 1/2 Female NPT
 Flow Range: Continuous / Variable (100ml/min. - 9 U.S. GPM)

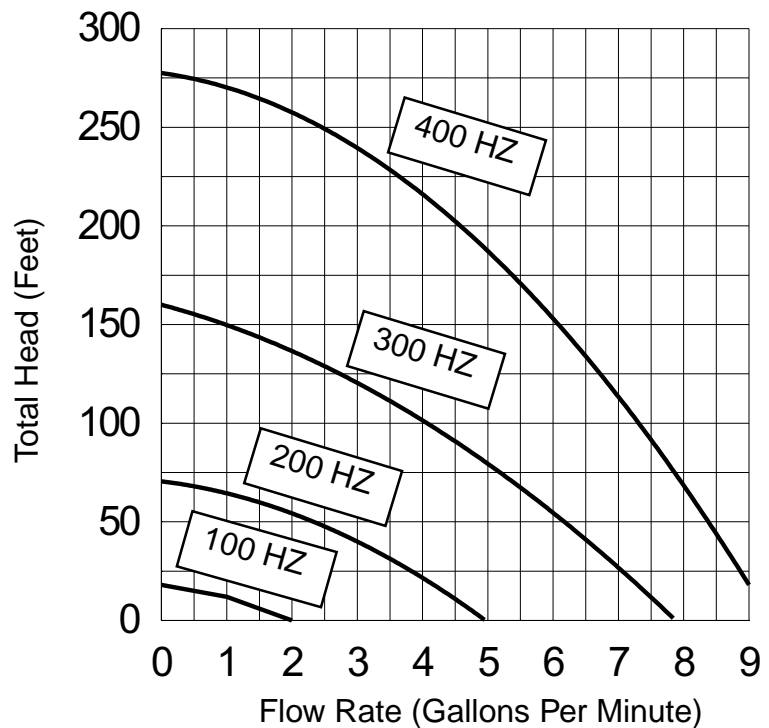
Motor Protection: Thermal Overload
 Thermik Geratebau, Series SY6
 Disconnect Temperature: 176. F (80. C)
 Rate Current: 5 Amps
 Current Overload: Incorporated into MP1 Converter

Installation: Unit to be installed vertically for submerged operation.
 Standard Lead Lengths: 50, 75, 100, 150, 175, 200, 250, and 300 Ft.
 Custom Lengths: 25-300 feet in 1 foot increments.

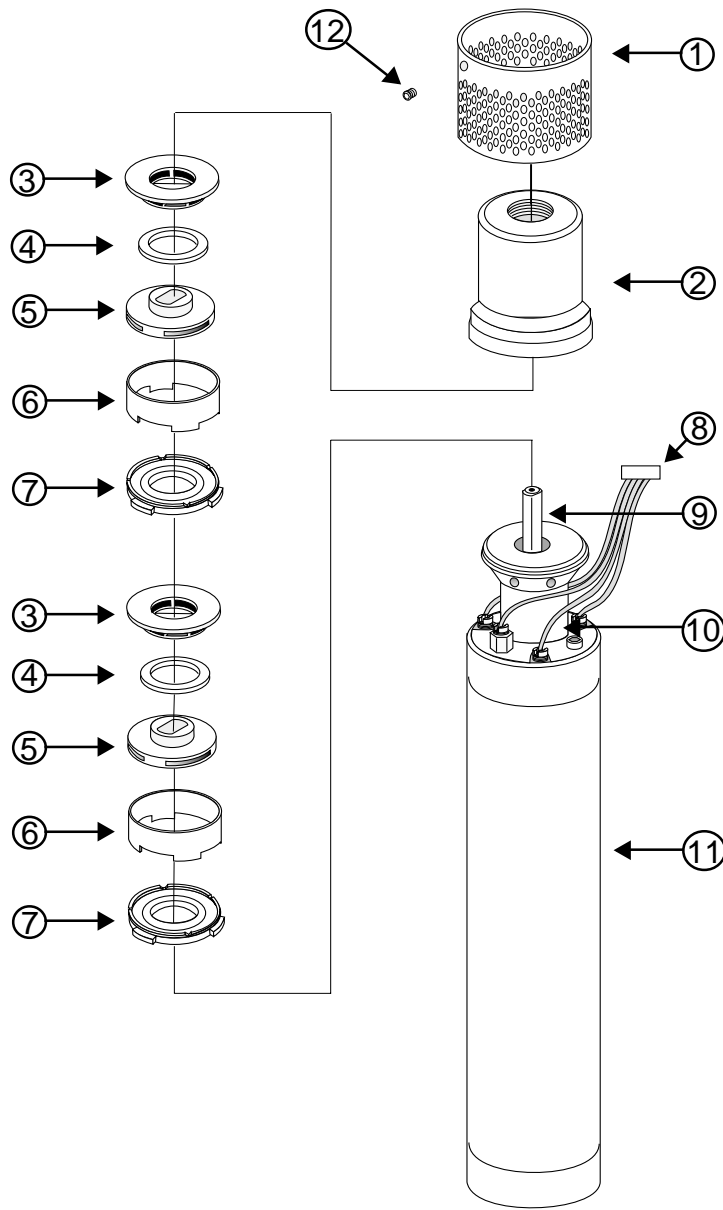
Dimensions (inches/mm)



Net Weight: 5.5LBS.
 (Not including motor lead)



MP-1 Materials of Construction



Position Number	Description	Material
1	Inlet Screen	316 Stainless Steel
2	Pump Housing	316 Stainless Steel
3	Guide Vane	316 Stainless Steel
4	Wear Ring	Teflon [®]
5	Impeller	316 Stainless Steel
6	Spacer Ring	316 Stainless Steel
7	Wear Plate	Teflon [®]
8	Motor Lead	Teflon [®]
9	Shaft	329 Stainless Steel
10	Suction Interconnector	316 Stainless Steel
11	Stator Housing	316 Stainless Steel
12	Allen Screw	18-8 Stainless Steel

Specifications subject to change w/o notice

Teflon[®] is a registered trademark of Du Pont



Grundfos Pumps Corporation • 3131 N. Business Park Avenue • Fresno, CA 93727
 Customer Service Centers: Allentown, PA • Fresno, CA
 Phone: (800) 333-1366 • Fax: (800) 333-1363
 Canada: Oakville, Ontario • Mexico: Apodaca, N.L.
 Visit our website at www.us.grundfos.com

L-RF-TL-012 | 09/00
 PRINTED IN USA

