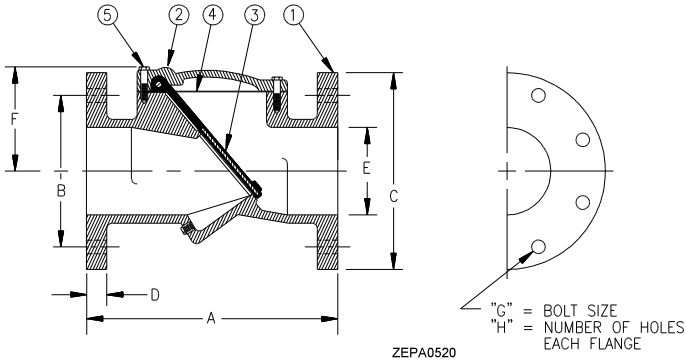


3" & 4" FLANGED CHECK VALVES

Features:

- Heavy duty cast iron construction.
- Angled seal for non-slam closure.
- Non-clog design.
- Reinforced disc.
- Drip-tight seating.
- Rated up to 200 PSIG.
- Designed for both horizontal and vertical usage.

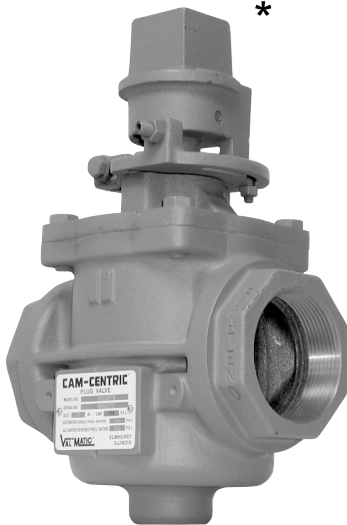


PART NO.	PART NAME	MATERIAL
1	BODY	CAST IRON ASTM A126, CLASS B
2	COVER	CAST IRON ASTM A126, CLASS B
3	DISC	BUNA-N W/ STEEL & NYLON REINFORCEMENT
4	GASKET	COMPRESSED NONASBESTOS FIBER
5	COVER BOLT	ALLOY STEEL SAE GRADE 5

Part Number	Valve Size	"A"	"B"	"C"	"D"	"E"	"F"	"G"	"H"	Weight lbs.
6030-0202	3"	9 1/2	6	7 1/2	3/4	3	3 7/8	5/8	4	37
6030-0203	4"	11 1/2	7 1/2	9	15/16	4	4 5/8	5/8	8	63

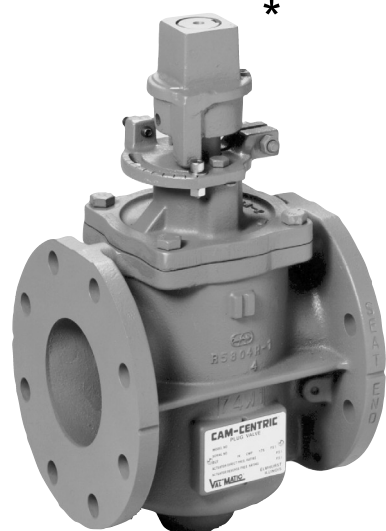
2" - 3" - 4" CAST IRON PLUG VALVES

Threaded Connection - 2" & 3"
Flanged Connection - 3" & 4"



Features:

- Designed to handle solids bearing flows.
- Cast iron housing - rated 175 psi.
- 99% pure nickel welded seat.
- 1/4 turn Buna plug.
- Upper and lower ball bearings.
- Provided with hand lever.



*Hand lever not shown in pictures.

THREADED MODELS				
SIZE	PART NUMBER	WIDTH	HEIGHT	WEIGHT
2"	6030-0082	5-1/4"	7-1/8"	12 LBS.
3"	6030-0083	8-3/4"	14-1/8"	45 LBS.

FLANGED MODELS				
SIZE	PART NUMBER	WIDTH	HEIGHT	WEIGHT
3"	6030-0085	8"	14-1/8"	53 LBS.
4"	6030-0086	9"	16-3/4"	66 LBS.

GENERAL CAUTION: Water hammer creates momentary high pressure surges. These surges can cause severe damage to check valves and the piping system. Consideration for water hammer must be included in the piping system design. Reference ASPE Data Book, Chapter 2.33.