

"QUALITY PUMPS SINCE 1939"

SECTION: 4.10.117

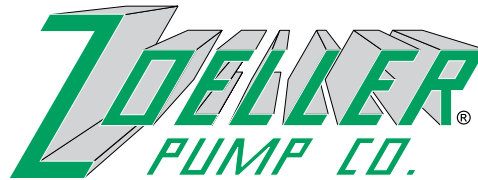
FM1420

0408

Supersedes

0906

Product information presented here reflects conditions at time of publication. Consult factory regarding discrepancies or inconsistencies.



MAIL TO: P.O. BOX 16347 • Louisville, KY 40256-0347
 SHIP TO: 3649 Cane Run Road • Louisville, KY 40211-1961
 (502) 778-2731 • 1 (800) 928-PUMP • FAX (502) 774-3624

visit our web site:
www.zoeller.com



Zoeller Qwik-Box Pump Control and Alarm Systems

The Qwik-Box is a junction connection box designed for easy hookup of pumps and alarm systems used in septic effluent, sewage, or dewatering applications requiring a connection outside the building or residence. The Qwik-Box eliminates the need for junction wiring boxes inside sewage and septic tanks, and consists of UL Listed components. The sealed receptacle also eliminates the need for a separate outdoor disconnect. The pump and piggyback float switch plug directly into the sealed receptacle. The plug and receptacle meet all requirements of the National Electrical Code for a disconnecting means for fractional horsepower motors. The sealed enclosure meets requirements of the National Electrical Code and simplifies removal of pump and float control switch for service or repair. The Qwik-Box allows you to open the cover and have the pump unit serviced by disconnecting piggyback pump float switch cord at the receptacle.

STANDARD FEATURES

- No need to cut off plugs.
- Sealed watertight enclosure.
- Available in 115 Volt or 230 Volt design.
- Corrosion resistant PVC construction.
- Easy hookup of indoor alarm with terminal strip exposed for low voltage wiring.
- Rated for NEMA 4X.
- Incoming power and alarm cable are permanently sealed. Epoxy seal kit included.
- Water-tight rubber cord seal for pump and switch cables.
- Optional indoor tank alert alarm with silence switch and LED indicator.
- Installation and wiring instructions included.
- Meets NEC requirements for a Disconnect.

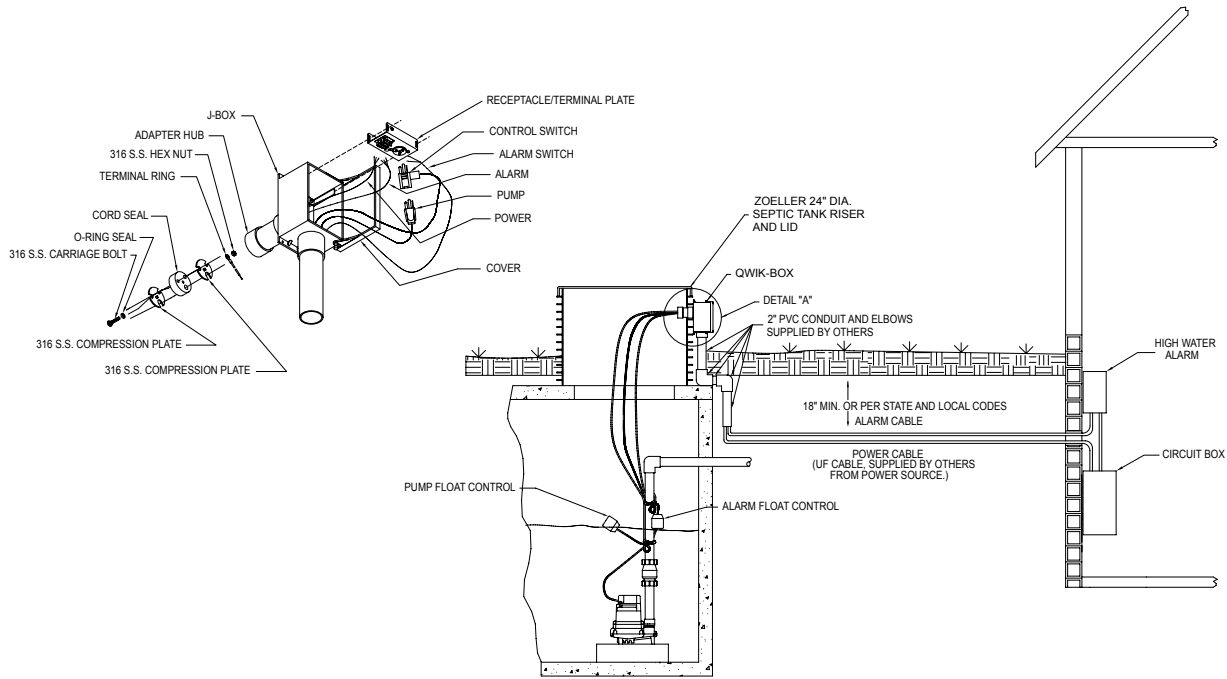
Pumps and/or alarms wired-in or connected in the field must be installed according to the National Electrical Code (NEC) by a qualified licensed electrician.

OPTIONAL COMPONENTS

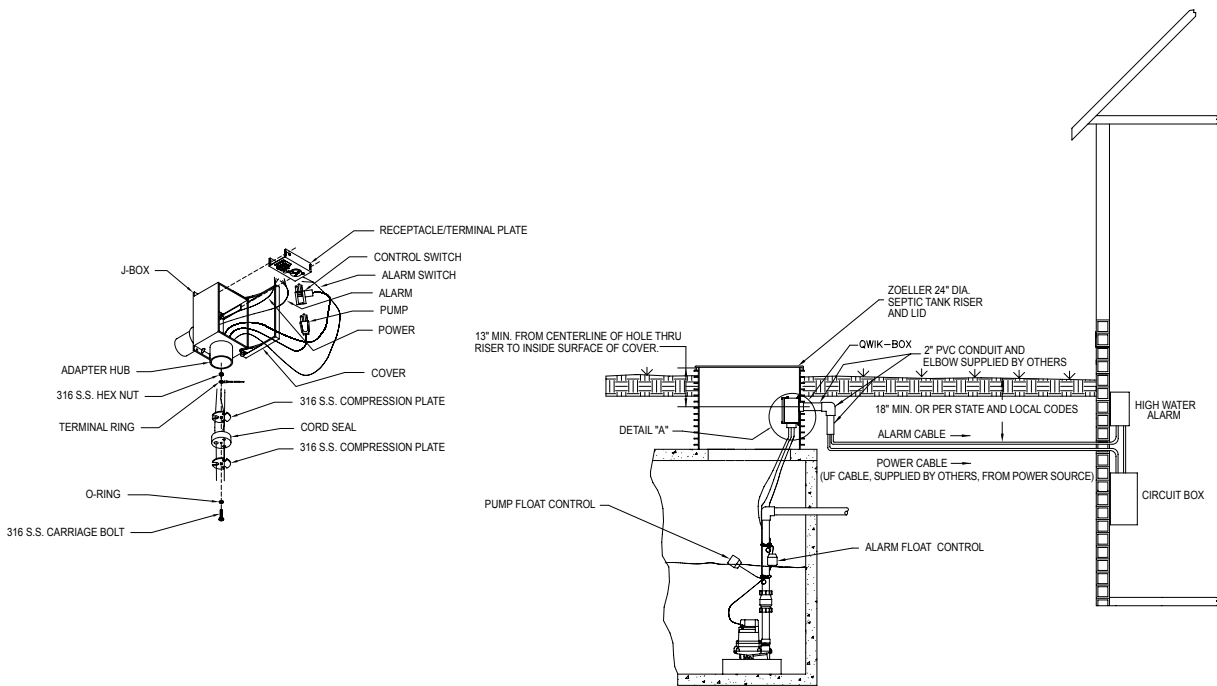
1. Water-tight J-Box
2. Receptacle terminal plate
3. Piggyback pump float switch
4. Potting kit
5. Water-tight rubber cord seal
6. Tank Alert alarm
7. Alarm float switch

ASSEMBLY P/N	DESCRIPTION	COMPONENTS
10-0566	Qwik-Box - 115V - 1Ph - 15 amp Receptacle/13 amp Piggyback Switch/Sealing Accessories	1,2,3,4,5
10-0568	Qwik-Box - 115V - 1Ph - 15 amp Receptacle/13 amp Piggyback Switch/A-Pak/Sealing Accessories	1,2,3,4,5,6,7
10-0579	Qwik-Box - 115V - 1Ph - 15 amp Receptacle/Sealing Accessories	1,2,4,5
10-0592	Qwik-Box - 115V - 1Ph - 15 amp Receptacle/A-Pak/Sealing Accessories	1,2,4,5,6,7
10-0567	Qwik-Box - 230V - 1Ph - 15/20 amp Receptacle/13 amp Piggyback Switch/Sealing Accessories	1,2,3,4,5
10-0569	Qwik-Box - 230V - 1Ph - 15/20 amp Receptacle/13 amp Piggyback Switch/A-Pak/Sealing Accessories	1,2,3,4,5,6,7
10-0580	Qwik-Box - 230V - 1Ph - 15/20 amp Receptacle/Sealing Accessories	1,2,4,5
10-0593	Qwik-Box - 230V - 1Ph - 15/20 amp Receptacle/A-Pak/Sealing Accessories	1,2,4,5,6,7
10-0576	Qwik-Box Sealing Accessories/A-Pak	4,5,6,7

Zoeller Qwik-Box Pump Control and Alarm Systems



SK2580



SK2579

ORDERING INFORMATION

ASSEMBLY P/N	VOLTAGE	QWIK-BOX	ALARM & FLOAT SW	PUMP CONTROL SW
10-0568 ⁽¹⁾	115V	010142	10-1494	10-0034
10-0569 ⁽¹⁾	230V	010143	10-1494	10-0035
10-0566 ⁽¹⁾	115V	010142	N/A	10-0034
10-0567 ⁽¹⁾	230V	010143	N/A	10-0035
10-0579 ⁽²⁾	115V	010142	N/A	N/A
10-0580 ⁽²⁾	230V	010143	N/A	N/A
10-0592 ⁽²⁾	115V	010142	10-1494	N/A
10-0593 ⁽²⁾	230V	010143	10-1494	N/A

(1) For use with pumps rated 1/2 HP, 115V, 13 AMPS or 1 HP, 230V, 13 AMPS.

(2) For use with pumps rated 13-15 AMPS, 3/4 HP, 115V or 13-20 AMPS, 2 HP, 230V, order switch separately. See FM0477. (Pumps must have 15 amp plug cap to be used with piggyback switch.)

© Copyright 2008 Zoeller Co. All rights reserved.