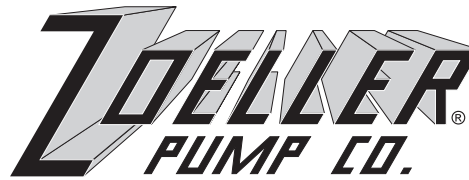


*"QUALITY PUMPS SINCE 1939"*

Product information presented here reflects conditions at time of publication. Consult factory regarding discrepancies or inconsistencies.

<http://www.zoeller.com>



SECTION: 6.10.120

FM0345

0697

Supersedes

1195

MAIL TO: P.O. BOX 16347 • Louisville, KY 40256-0347  
SHIP TO: 3649 Cane Run Road • Louisville, KY 40211-1961  
(502) 778-2731 • 1 (800) 928-PUMP • FAX (502) 774-3624

## INSTALLATION INSTRUCTIONS FOR M-PAKS

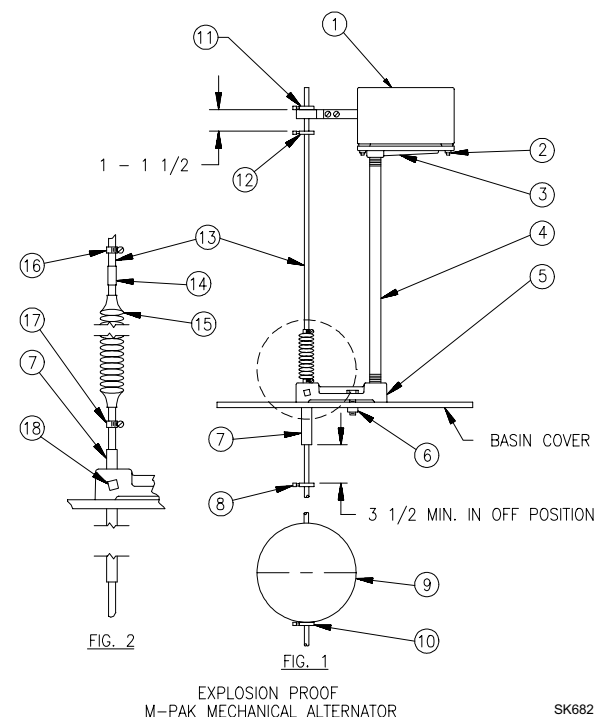
- Position foot (5) on basin cover or inspection cover at desired location and drill two  $\frac{7}{16}$ " holes for  $\frac{3}{8}$ " dia. bolts (6) and one  $\frac{3}{4}$ " dia. hole for float rod guide (7). Foot may be used as a template for drilling.  
**NOTE:** Neither the walls nor the plumbing must interfere with float operation.
- Seal around bolts (6) and float rod guide (7) with silicone rubber, insert rod guide through foot (5) as shown in fig. 2 and tighten bolts (6) and set screw (18).
- Slide collar (10) onto end of float rod (13) and tighten set screw, then slide float rod through float (9) as shown in fig. 1.
- Slide collar (8) onto float rod (13) above float (9), (DO NOT TIGHTEN), then slide float rod through float rod guide (7) as shown in fig. 1.
- Slip clamp (17) and bellows seal (15) onto float rod guide (7) with one end of bellows seal restrained between (17) and (7) as shown in fig. 2, and tighten clamp.
- Slide bushing (14) onto float rod (13) and inside of open end of bellows seal (15). Slip clamp (16) over end of bellows seal with bushing and tighten.
- Set alternator (1) onto pad (3), align holes, and secure using bolts (2).
- Slide collar (12) onto float rod (13) (DO NOT TIGHTEN), then insert float rod through alternator arm (1) and slide collar (11) onto float rod and tighten (11) at desired "OFF" level. Set and tighten (12) as shown in fig. 1.
- Determine desired "ON" level, set and tighten collar (8) from step 4.
- Check your installation. Fill basin with water and allow pump to cycle to ensure proper range and operation.



**▲ WARNING** Electrical wiring and protections must be in accordance with National Electrical Code and any other applicable state and local electrical requirements.

**▲ WARNING** Do not touch pump or piping with power connected.

ITEM	DESCRIPTION	P/N	QTY.
1-a	Alternator w/alarm switch	010065	1
1-b	Alternator w/out alarm switch	010061	1
2	$\frac{1}{4}$ " - 20 x $\frac{3}{4}$ " RHM screw	001881	4
	$\frac{1}{4}$ " - 20 sq HD nuts	001814	4
3	Pad	010014	1
4	Stem	010030	1
5	Foot	010012	1
6	$\frac{3}{8}$ " - 16 x 1- $\frac{1}{2}$ " Bolts	001874	2
	$\frac{3}{8}$ " - 16 x sq HD nuts	001816	2
7	Float Rod Guide	010029	1
8, 10, 11, 12	Collar	010034	4
9	Float	010032	1
13	Float Rod	010033	1
14	Bushing	010038	1
15	Bellows Seal	010039	1
16, 17	Clamp	001769	2
18	$\frac{5}{16}$ " - 18 x $\frac{3}{4}$ " set screw	001900	1
1-a & 2 thru 18	M-Pak w/alarm switch	10-0075	1
1-b & 2 thru 18	M-Pak w/out alarm switch	10-0072	1
14, 15, 16, 17	Rod Seal Assembly	010040	1
8 thru 13	Float Assembly	010031	1
2 thru 7 & 8	Stand Assembly	010022	1



EXPLOSION PROOF  
M-PAK MECHANICAL ALTERNATOR

SK682

# INSTALLATION INSTRUCTIONS FOR EXPLOSION PROOF M-PAKS

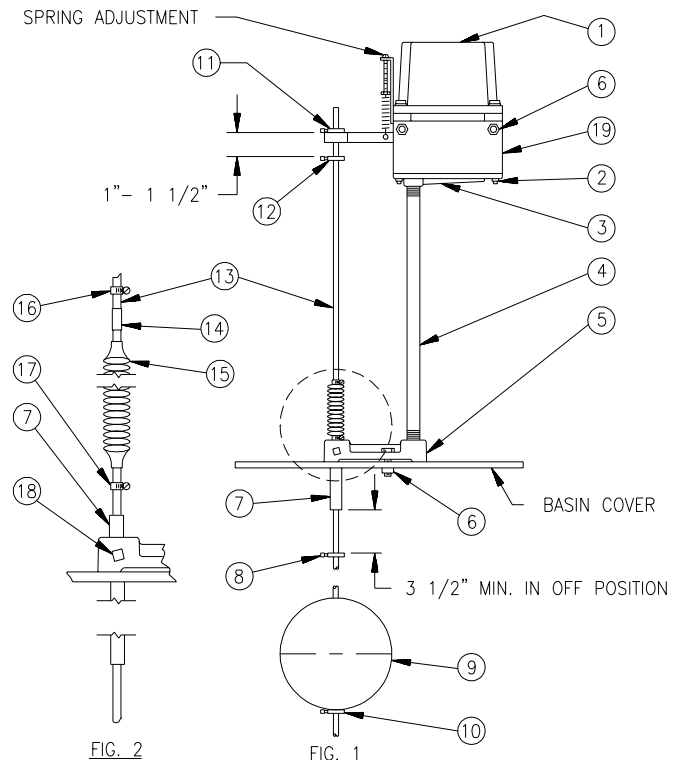
1. Position foot (5) on basin cover or inspection cover at desired location and drill two  $\frac{7}{16}$ " holes for  $\frac{3}{8}$ " dia. bolts (6) and one  $\frac{3}{4}$ " dia. hole for float rod guide (7). Foot may be used as a template for drilling.  
**NOTE:** Neither the walls nor the plumbing must interfere with float operation.
2. Seal around bolts (6) and float rod guide (7) with silicone rubber, insert rod guide through foot (5) as shown in fig. 2 and tighten bolts (6) and set screw (18).
3. Slide collar (10) onto end of float rod (13) and tighten set screw, then slide float rod through float (9) as shown in fig. 1.
4. Slide collar (8) onto float rod (13) above float (9), (DO NOT TIGHTEN), then slide float rod through float rod guide (7) as shown in fig. 1.
5. Slip clamp (17) and bellows seal (15) onto float rod guide (7) with one end of bellows seal restrained between (17) and (7) as shown in fig. 2, and tighten clamp.
6. Slide bushing (14) onto float rod (13) and inside of open end of bellows seal (15). Slip clamp (16) over end of bellows seal with bushing and tighten, slide collar (12) onto float rod (13) (DO NOT TIGHTEN).
7. Install stem (4) into pad (3) and tighten, then install other end of stem into foot (5) and tighten.
8. Set mounting angle (19) onto pad (3), align 4 holes, and secure using bolts (2).
9. While mounting alternator (1) to the mounting angle (19) using 2 bolts (6), insert float rod through alternator arm (1).
10. Slide collar (11) at desired "OFF" level. Set and tighten (12) as shown in fig. 1.
11. Determine desired "ON" level, set and tighten collar (8) from step 4.
12. Check your installation. Fill basin with water and allow pump to cycle to ensure proper range and operation.
13. Adjust spring tension as required for proper operation.



**▲ WARNING** Electrical wiring and protections must be in accordance with National Electrical Code and any other applicable state and local electrical requirements.

**▲ WARNING** Do not touch pump or piping with power connected.

ITEM	DESCRIPTION	P/N	QTY.
1-a	Alternator w/alarm switch	004876	1
1-b	Alternator w/out alarm switch	004699	1
2	$\frac{1}{4}$ " - 20 x $\frac{3}{4}$ " RHM screw	001881	4
	$\frac{1}{4}$ " - 20 sq HD nuts	001814	4
3	Pad	010014	1
4	Stem	010030	1
5	Foot	010012	1
6	$\frac{3}{8}$ " - 16 x 1- $\frac{1}{2}$ " Bolts	001874	2
	$\frac{3}{8}$ " - 16 x sq HD nuts	001816	2
7	Float Rod Guide	010029	1
8, 10, 11, 12	Collar	010034	4
9	Float	010032	1
13	Float Rod	010033	1
14	Bushing	010038	1
15	Bellows Seal	010039	1
16, 17	Clamp	001769	2
18	$\frac{5}{16}$ " - 18 x $\frac{3}{4}$ " set screw	001900	1
19	Mounting angle	004877	1
1-a & 2 thru 19	M-Pak w/alarm switch	10-0077	1
1-b & 2 thru 19	M-Pak w/out alarm switch	10-0076	1
14, 15, 16, 17	Rod Seal Assembly	010040	1
8 thru 13	Float Assembly	010031	1
2 thru 7 & 19	Stand Assembly	004878	1



EXPLOSION PROOF  
M-PAK MECHANICAL ALTERNATOR

SK685