

COMPARE THESE FEATURES

DELUXE & STANDARD SYSTEMS

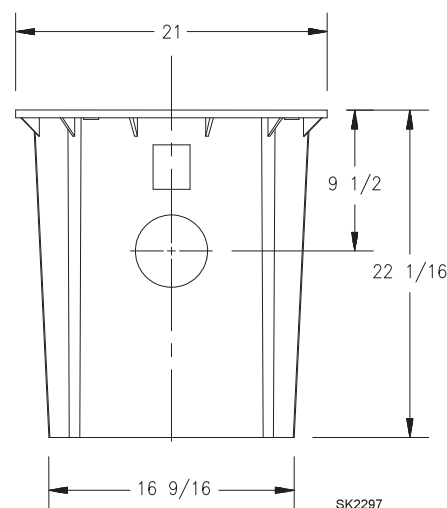
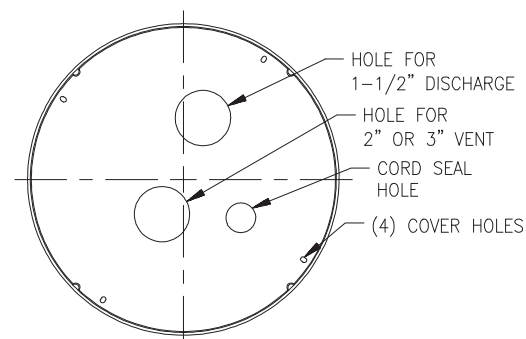
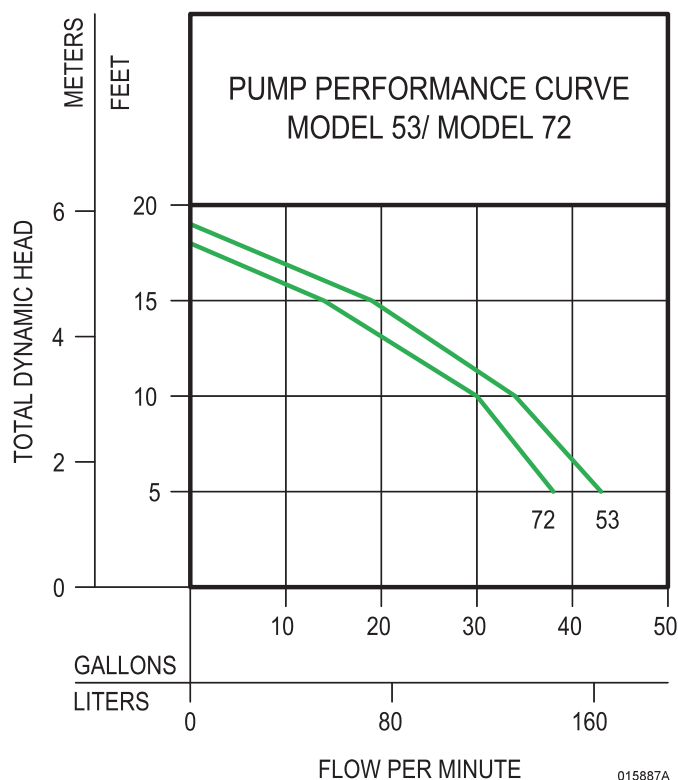
(Model M53 Pump)

- Automatic, float operated mechanical switch.
- 115 V/1 Ph., 60 Hz.
- 9 ft. UL Listed 3-wire cord and plug.
- Stainless steel screws, guard, handle and switch arm.
- Passes 1/2" spherical solids.
- 1 1/2" NPT discharge.
- 1550 RPM.
- Non-clogging vortex impeller.
- Glass-filled polypropylene base with built-in strainer.
- Temperature rated 130° F.
- UL and CSA Listed Pump.

ECONOMY SYSTEM

(Model M72 Pump)

- 115 V/1 Ph., 60 Hz.
- 9 ft. UL Listed 3-wire cord and plug.
- Stainless steel screws, switch arm and lower motor housing.
- Oil free.
- Passes 3/8" spherical solids.
- 1 1/2" NPT discharge.
- 3400 RPM.
- Non-clogging vortex impeller.
- Temperature rated 110° F.
- cCSAus Certified Pump.



**TOTAL DYNAMIC HEAD/FLOW
PER MINUTE
EFFLUENT AND DEWATERING**

| MODEL | | 53 | | 72 | |
|----------------|--------|------------------|--------|---------------|--------|
| Feet | Meters | Gal. | Liters | Gal. | Liters |
| 5 | 1.5 | 43 | 163 | 38 | 144 |
| 10 | 3.0 | 34 | 129 | 30 | 114 |
| 15 | 4.6 | 19 | 72 | 14 | 53 |
| Shut-off Head: | | 19.25 ft.(5.9 m) | | 18 ft.(5.5 m) | |

015887B

JOB READY FOR EASY INSTALLATION



WARNING TO REDUCE THE RISK OF ELECTRICAL SHOCK A PROPERLY GROUNDED RECEPTACLE OF GROUNDING TYPE SHALL BE INSTALLED AND PROTECTED BY A GROUND FAULT CIRCUIT INTERRUPTER (GFCI) IN ACCORDANCE WITH NATIONAL ELECTRICAL CODE AND LOCAL CODES. DO NOT REMOVE GROUND PIN FROM PLUG.

RESERVE POWERED DESIGN

For unusual conditions a reserve safety factor is engineered into the design of every Zoeller pump.

© Copyright 2003 Zoeller Co. All rights reserved.