

**TOTAL DYNAMIC HEAD/FLOW
PER MINUTE
DEWATERING ONLY**

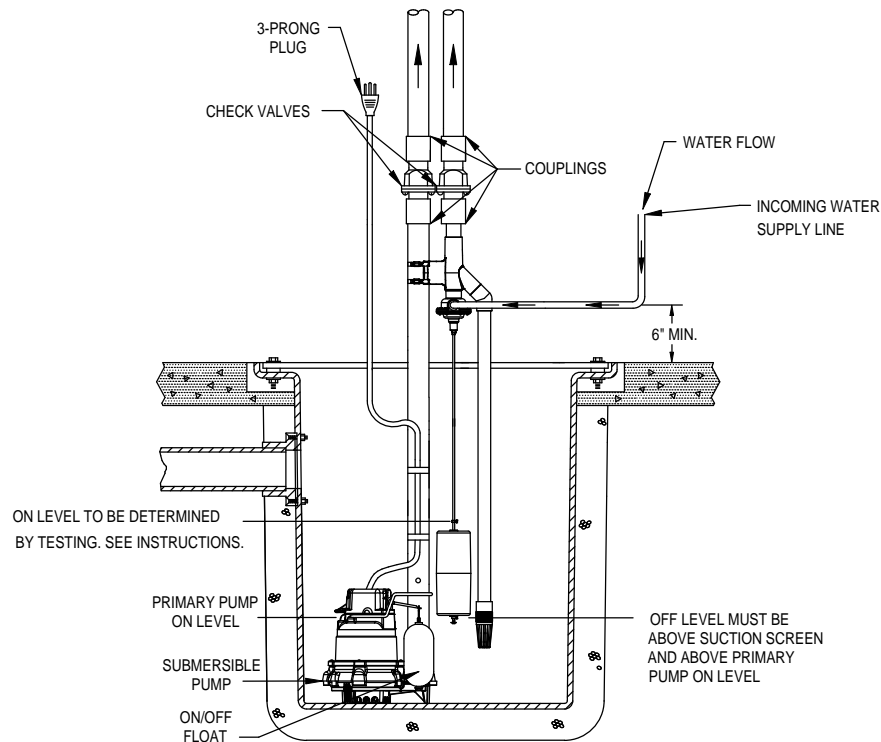
MODEL		503							
		20 PSI		40 PSI		60 PSI		80 PSI	
Feet	Meters	Gal.	Liters	Gal.	Liters	Gal.	Liters	Gal.	Liters
5	1.5	7.7	29.1	12.7	48.1	19.0	72.0	20.0	75.7
10	3.0	3.4	12.9	12.7	48.1	19.0	72.0	20.0	75.7
15	4.6	—	—	7.4	28.0	15.0	56.8	20.0	75.7
20	6.1	—	—	2.0	7.6	11.1	42.0	20.0	75.7
25	7.6	—	—	—	—	7.1	26.9	15.3	57.9
30	9.1	—	—	—	—	3.2	12.1	10.9	41.3
35	10.7	—	—	—	—	—	—	6.4	24.2
40	12.2	—	—	—	—	—	—	1.8	6.8
Shut-off Head:		14.0 ft. (4.3m)		22.0 ft. (6.7m)		34.0 ft. (10.4m)		42.0 ft. (12.8m)	

018586

Pump capacity varies due to: Inlet Water Pressure, Working Water Pressure, Discharge Elevation, Number of Pipe Fittings, Inlet and Outlet Pipe Size, Fluid Viscosity, Degree of Water Clarity, Water Temperature. The flow rates in the chart are approximate values.

NOTE: Some districts may require a reduced pressure principle backflow preventer per ASSE Standards 1013. Check Local Codes.

**Typical Installation with Submersible Pump
and Separate Discharge Pipe**



SK2721B



HOME GUARD
MAX

Manufactured by Zoeller Pump Company

MAIL TO: P.O. BOX 16347 • Louisville, KY 40256-0347
SHIP TO: 3649 Cane Run Road • Louisville, KY 40211-1961
(502) 778-2731 • 1 (800) 928-PUMP • FAX (502) 774-3624