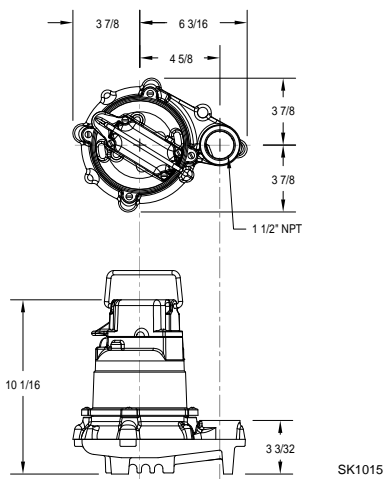


TOTAL DYNAMIC HEAD/FLOW PER MINUTE EFFLUENT AND DEWATERING

MODEL		57		152		153		161	
Feet	Meters	Gal.	Liters	Gal.	Liters	Gal.	Liters	Gal.	Liters
5	1.5	43	163	69	261	77	291	100	379
10	3.0	34	129	61	231	70	265	93	352
15	4.6	19	72	53	201	61	231	85	322
20	6.1	--	--	44	167	52	197	79	299
25	7.6	--	--	34	129	42	159	70	265
30	9.1	--	--	23	87	33	125	62	235
35	10.7	--	--	--	--	22	83	54	204
40	12.2	--	--	--	--	11	42	45	170
50	15.2	--	--	--	--	--	--	20	76
Shut-off Head:		19.25 ft (5.9 m)		38 ft (11.6 m)		44 ft (13.4 m)		56 ft (17 m)	

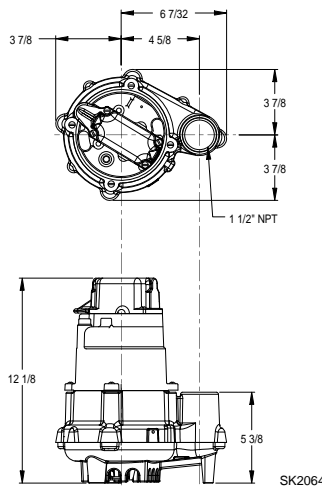
018939

Model 57



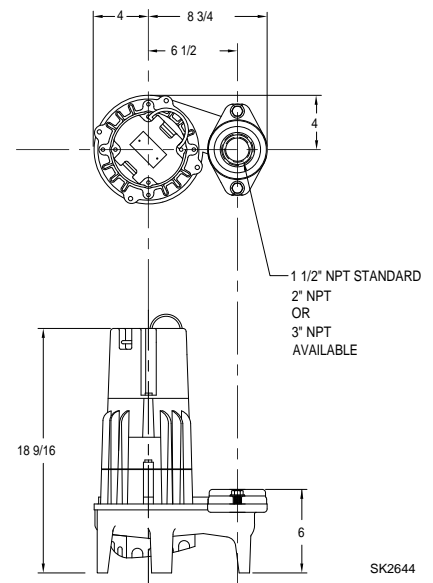
(See FM0493)

Model 152/153



(See FM1919)

Model 161



(See FM0460)

COMPONENTS:

Part Number	Description	Alarm Panel	Oil Smart® Pump Switch	Oil Smart® Liquid Alarm Switch	Oil Smart® High Liquid Alarm Switch
10-1526	Oil Smart® Alarm Panel	✓	---	✓	---
10-1528	Oil Smart® Pump Switch	---	✓	---	---
10-1727	Oil Smart® Pump Switch w/o Plug	---	✓	---	---
10-2149	Oil Smart® Simplex Panel	✓	✓	✓	---
10-2150	Oil Smart® Duplex Panel	✓	✓	✓	✓
10-2516	Oil Smart® Sim. Pan. w/ Mtr. Cont.	✓	✓	---	*✓

✓ (included) * (variable level float switch)

CHOOSE A PREPACKAGED SYSTEM:

Part Number	Description	Alarm Panel	Oil Smart® Pump Switch	Nonauto Pump
940-0005	Oil Guard® Pump Switch and Panel	10-1526	10-1528	N57
940-0006	Oil Guard® Pump Switch and Panel	10-1526	10-1528	N152
940-0007	Oil Guard® Pump Switch and Panel	10-1526	10-1528	N153
940-0008	Oil Guard® Pump Switch and Panel	10-1526	10-1528	N161

Note: Other voltages and systems available. Contact factory for specifications.

BUILD YOUR OWN SYSTEM:

Nonauto Pump	Part Number	Voltage	HP	Amps	Hz
N57	57-0002	115	3/10	9.7	60
N152	152-0002	115	4/10	8.5	60
N153	153-0002	115	1/2	10.5	60
N161	161-0002	115	1/2	15.0	60

(Or choose a prepackaged system, see below.)

These systems are not designed for Explosion Proof Environments. Please consult factory for special options and requirements.

CAUTION

All installation of controls, protection devices and wiring should be done by a qualified licensed electrician. All electrical and safety codes should be followed including the most recent National Electrical Code (NEC) and the Occupational Safety and Health Act (OSHA).