

PREPACKAGED AND JOB READY SYSTEMS

INDOOR	
REQ.	
1 Grinder (Auto or Nonauto)	P/N _____ (A)
1 Alarm System (Optional)	P/N _____ (B)
1 Weight Only (Required if alarm is used)	P/N 10-0689 (C)
1 Junction Box (Optional)	P/N 10-0666 (E)
1 Basin, Cover and Hardware	P/N _____ (F)

OUTDOOR	
REQ.	
1 Grinder (Auto or Nonauto)	P/N _____ (A)
1 Control Panel/Alarm System	P/N _____ (B)
1 Float Switch/es (if required)	P/N _____ (C)
1 Weight/s and Bracket/s	P/N _____ (C)
1 Junction Box	P/N _____ (E)
1 Basin, Cover and Rail System	P/N _____ (G)

FIELD MOUNT SYSTEMS

SIMPLEX	
REQ.	
1 Grinder (Auto or Nonauto)	P/N _____ (A)
1 Alarm System (Optional)	P/N _____ (B)
1 Variable Level Fl. Sw. Assm. ⁽²⁾ (Not required for auto pumps)	P/N _____ (C)
1 Weight and Bracket Only (2 required if alarm is used)	P/N 10-0661 (C)
1 Junction Box (Optional)	P/N _____ (E)
1 Rail System (Optional)	P/N _____ (H)
1 Angle Arm/Intermediate Bracket ⁽¹⁾	P/N _____ (H)
1 Pull Rod ⁽³⁾	P/N _____ (J)
1 S.S. Cable	P/N _____ (K)

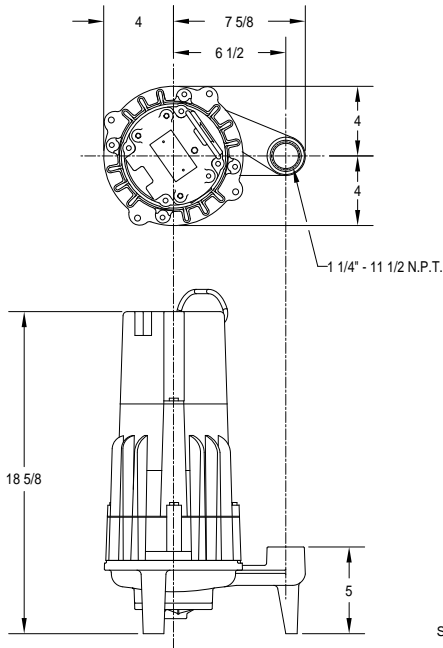
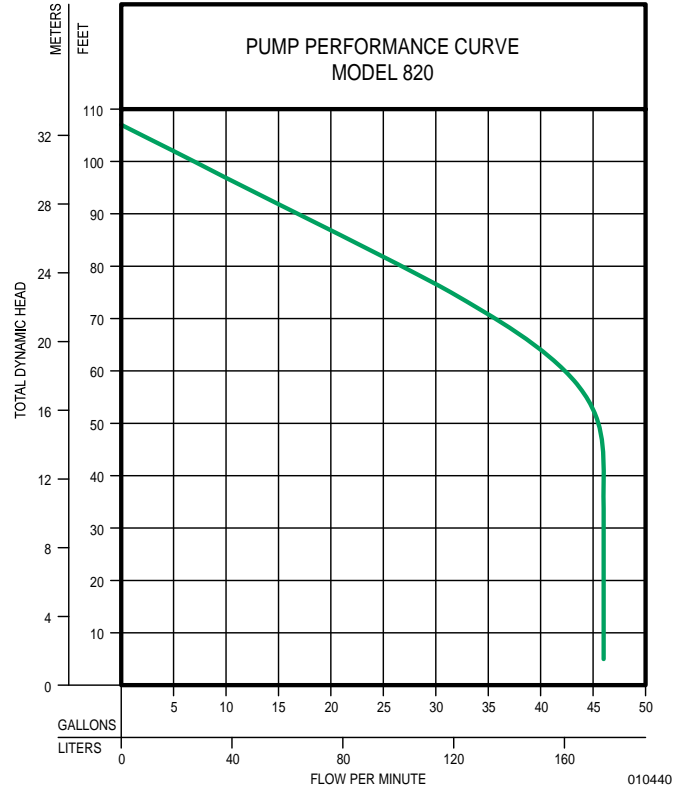
⁽¹⁾ Required for basins over 72" deep (Square Guide Rail) and over 12" (E-Z Out Rail). Allow for overhead clearances.

⁽²⁾ Hardwire pump, float switch, and power supply inside junction box.

⁽³⁾ For Square Guide Rail Only

Note: Contact factory for control panel selection.

Note: Access Doors Available on Field Mount Systems - Consult Factory
Special Basin Configurations - Consult Factory



SK1621

Manufacturers of... "QUALITY PUMPS SINCE 1939"