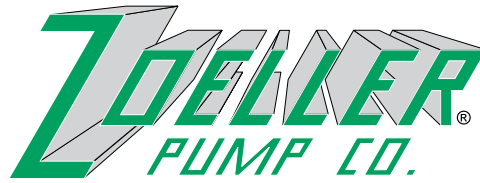


"QUALITY PUMPS SINCE 1939"



SECTION: 2.50.005

FM2344

1107

Supersedes

0307

Product information presented here reflects conditions at time of publication. Consult factory regarding discrepancies or inconsistencies.

MAIL TO: P.O. BOX 16347 • Louisville, KY 40256-0347  
SHIP TO: 3649 Cane Run Road • Louisville, KY 40211-1961  
(502) 778-2731 • 1 (800) 928-PUMP • FAX (502) 774-3624

visit our web site:  
[www.zoeller.com](http://www.zoeller.com)

# THE SHARK Series



## 810-815 SERIES PROGRESSING CAVITY GRINDER PUMP MODELS

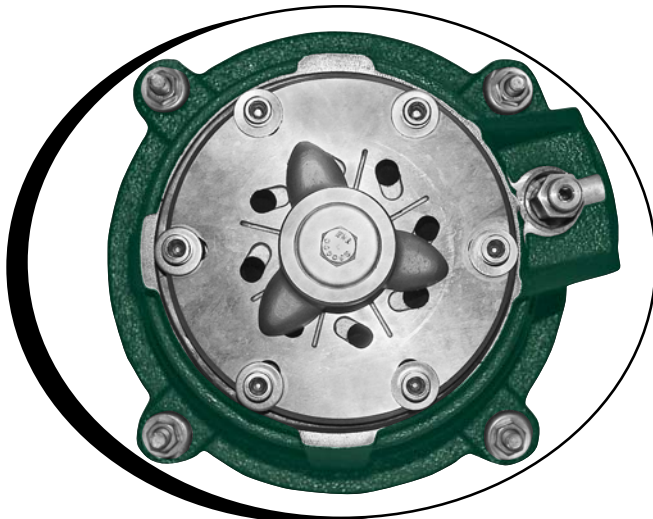
810 - 1 HP

815 - 2 HP

### PROGRESSING CAVITY GRINDER PUMP

#### FEATURES:

- Finned Class 30 Cast Iron Construction.
- Corrosion Resistant Powder Coated Epoxy Finish.
- Discharge Size - 1 1/4" NPT.
- 1 & 2 HP, 60 Hz, 1725 RPM.  
Model 810 - 1 HP, 230 Volts/1 Ph.  
Model 815 - 2 HP, 230 Volts/1 Ph.
- UL Listed 20 ft. 3-wire neoprene cord with 15 amp plug.
- Oil-Filled - Hermetically Sealed Motor with Class B Windings.
- Hardened Stainless Steel Cutter and Disc, Rockwell C55-60.
- Stainless Steel Hydraulic Pump Rotor.
- Pressure Relief Valve.
- Upper and Lower Ball Bearing Construction.
- Carbon/Ceramic mechanical seal.
- Integral Thermal Overload Protection with Automatic Reset.
- SS Mounting Stand for free standing installation.
- Preassembled Systems Available.



Tested to UL Standard UL778  
& Certified to CSA  
Standard C22.2 No. 108



Product may not be exactly as pictured.

# GRINDER SYSTEMS

## (A) GRINDER

### STANDARD FEATURES:

- 1¼" NPT Discharge
- Carbon/Ceramic Tandem Seals
- Thermal Overload protection
- Hydraulic SS Rotor and Buna-n Stator
- Stainless Steel Cutter Plate / Cutter
- Stainless Steel Shaft
- Stainless Steel Hardware
- Corrosion resistant powder coated epoxy paint
- 20 ft. Power Cord Cord

### OPTIONS:

- 25' Long Cords
- 35' Long Cords
- 50' Long Cords

## (A) 810 & 815 PROGRESSING CAVITY GRINDER 1 OR 2 HP 1¼" N.P.T. DISCHARGE

P/N	WGT.	MODEL	VOLTS	PH	HP	AMP
<input type="checkbox"/> 810-0004	88	E810	230	1	1	6.0
<input type="checkbox"/> 815-0004	91	E815	230	1	2	10.5

Maximum operating temperature 130°F (54°C).

Note: All variable level float switches in this section are mechanically activated and do not contain mercury.

## ELECTRICAL - CONTROL / ALARM / FLOATS / JUNCTION BOX (SELECT 1 OF THE 3 COLUMNS)

### QWIK BOX w/ FLOAT SWITCH

#### (B) ALARM PANEL

- P/N 10-0623 Indoor/Outdoor high water alarm with 15' control switch.
- P/N 10-0126 NEMA 4X high water alarm with 15' control switch and dry contact.
- P/N 10-1494 Indoor high water alarm with 15' control switch.

#### (C) PUMP SWITCH & WEIGHT - 1 pump switch required

- Single piggy-back type 230 volt 13 amp
- P/N 10-0035 with 15' cord
  - P/N 10-0689 weight for alarm float (Indoor Systems only)

#### (D) JUNCTION BOX - 1 required

- P/N 10-0580 Qwik-Box, NEMA 4X with 230 volt receptacle

### PLUGGER PANEL

#### (B) CONTROL PANEL

- P/N 10-2006 Plugger panel, NEMA 4X with high water alarm and 230 volt receptacle.

#### (C) FLOAT SWITCHES - 2 required

Pump: One pump switch  
Alarm: One control switch

- P/N 10-0706 piggy-back pump switch with 20' cord
- P/N 10-0311 piggy-back pump switch with 25' cord
- P/N 10-1956 piggy-back pump switch with 35' cord
- P/N 10-0744 mechanical control switch with 20' cord
- P/N 10-1877 mechanical control switch with 25' cord
- P/N 10-1878 mechanical control switch with 35' cord

#### (D) JUNCTION BOX

J-Box not recommended with this type control.

### SIMPLEX PANEL

#### (B) CONTROL PANEL

- P/N 10-2008 Simplex panel, Model E810 pump, NEMA 4X, with high water alarm and pump circuit breaker, less float switches.
- P/N 10-1212 Simplex panel, Model E815 pump, NEMA 4X, with high water alarm and pump circuit breaker, less float switches.

#### (C) FLOAT SWITCHES - 2 required

Pump: One pump switch  
Alarm: One control switch

- P/N 10-0706 piggy-back pump switch with 20' cord
- P/N 10-0311 piggy-back pump switch with 25' cord
- P/N 10-1956 piggy-back pump switch with 35' cord
- P/N 10-0744 mechanical control switch with 20' cord
- P/N 10-1877 mechanical control switch with 25' cord
- P/N 10-1878 mechanical control switch with 35' cord

#### (D) JUNCTION BOX - optional

- P/N 10-2145 NEMA 4X with 3 cord seals and conduit connection.

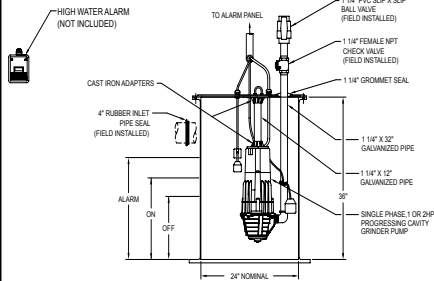
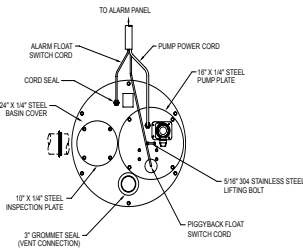
**(E) INDOOR AND OUTDOOR PACKAGED SYSTEMS - PUMP & CONTROLS NOT INCLUDED**

**INDOOR SYSTEM**

**FIBERGLASS BASIN**

Pump suspended from steel cover

- P/N 32-0029 24" X 36"



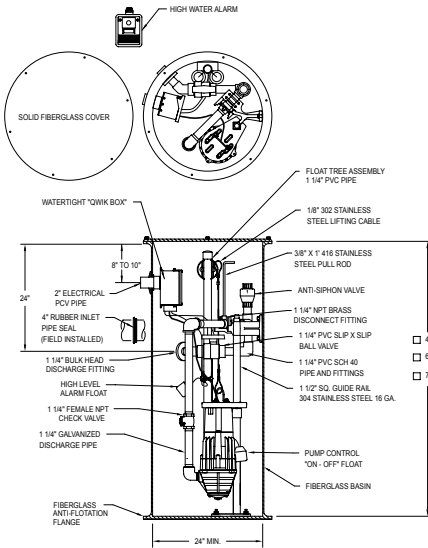
SK2628

- Fiberglass Basin
- Rust Resistant Steel Cover (epoxy coated)
- Inspection Plate
- Pump Plate
- 3" Adaptaflex Vent Seal
- 1 1/4" Adaptaflex Discharge Pipe Seal
- Cord Seal
- 1-4" Rubber Inlet Pipe Seal - Field Installed
- Pump Support Hardware
- 1 1/4" NPT Brass Check Valve - Field Installed
- Ball Valve - Field Installed

**OUTDOOR SYS. w/ SQUARE GRS**

**FIBERGLASS BASIN & COVER  
SQUARE GUIDERAIL SYSTEM**

- P/N 33-0491 24" X 48"
- P/N 33-0492 24" X 60"
- P/N 33-0493 24" X 72"



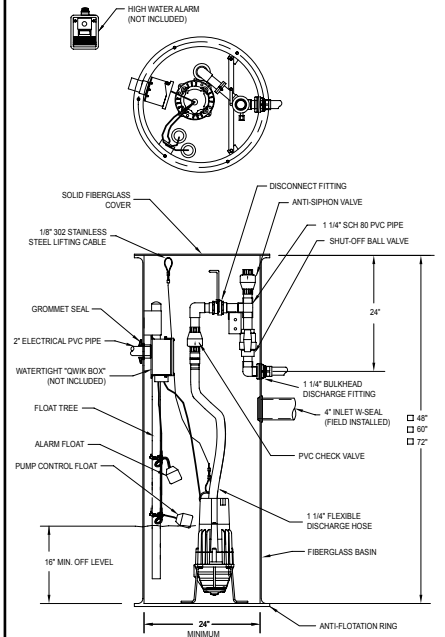
SK2569

- Fiberglass Basin with Anti-flotation Ring
- 1 1/4" Galvanized pump discharge piping to disconnect
- 1 1/4" PVC Discharge Pipe from Disconnect
- 1 1/4" Adaptaflex Discharge Pipe Seal
- Stainless Steel Square Guide Rail System
- 1' Pull Rod
- 8' SS Lifting Cable
- 1 1/4" PVC Ball Valve(s)
- 1 1/4" Brass Check Valve(s)
- 1 1/4" PVC Anti-siphon Device
- PVC Float Tree
- 1-4" Rubber Inlet Pipe Seal (Field Inst.)
- Fiberglass Cover

**OUTDOOR SYS. w/ FLEX HOSE DC**

**FIBERGLASS BASIN & COVER  
1.25" FLEXIBLE HOSE  
w/ DISCONNECT**

- P/N 35-0006 24" X 48"
- P/N 35-0007 24" X 60"
- P/N 35-0008 24" X 72"



SK2540

- Fiberglass Basin with Anti-flotation Ring
- Flex-hose Discharge Assembly with Disconnect Fitting
- 1 1/4" PVC Discharge Pipe from Disconnect
- 1 1/4" Adaptaflex Discharge Pipe Seal
- 1' Pull Rod
- 8' SS Lifting Cable
- 1 1/4" PVC Ball Valve(s)
- 1 1/4" PVC Check Valve(s)
- 1 1/4" PVC Anti-siphon Device
- PVC Float Tree
- 1-4" Rubber Inlet Pipe Seal (Field Inst.)
- Fiberglass Cover

**(F) ACCESSORIES FOR FIELD ASSEMBLED SYSTEMS**

**FLEX-HOSE DISCHARGE ASM.**

- P/N 10-2038 w/30" hose

**SQUARE GUIDE RAIL SYSTEM**

- P/N 39-0106 - 48" Deep Basin
- P/N 39-0107 - 60" Deep Basin
- P/N 39-0108 - 72" Deep Basin
- P/N 39-0070 - Rail Extension Bracket

**SS LIFTING CABLES AND ROD**

- P/N 39-0031 8' Cable
- P/N 39-0032 12' Cable
- P/N 39-0069 1' Rod

**PREWIRED CONDUIT  
(10-0580 Qwik Box Required)**

- 5100-0016 - 25'
- 5100-0017 - 35'
- 5100-0018 - 50'

**GALVANIZED 1.25" DISCHARGE ELBOW**

- P/N 018386

**CHECK VALVE**

- P/N 30-0223 1.25" NPT Brass

**BALL VALVE**

- P/N 30-0165 1.25" PVC

# PREPACKAGED AND JOB READY SYSTEMS

## INDOOR

### REQ.

1 810 or 815 Grinder	P/N _____ (A)
1 Alarm Panel	P/N _____ (B)
1 Piggyback Pump Switch	P/N _____ (C)
1 Weight for Alarm Float	P/N _____ (C)
1 Basin, Cover and Hardware	P/N _____ (E)

## OUTDOOR

### REQ.

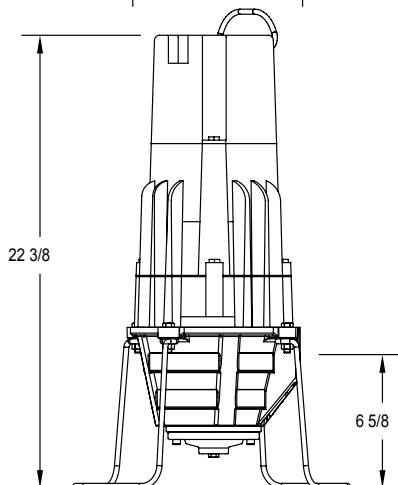
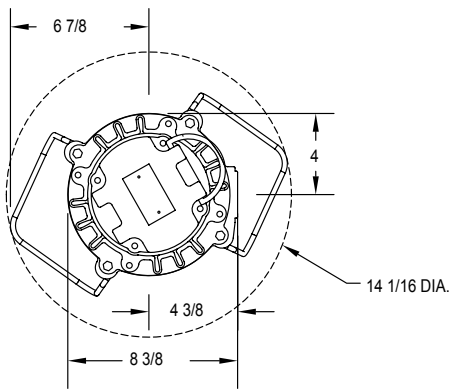
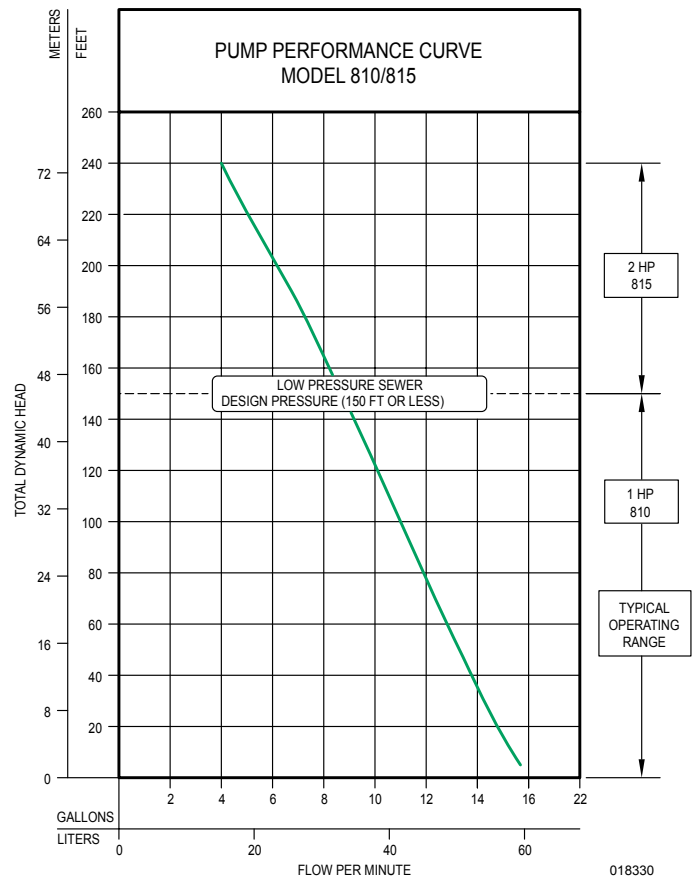
1 810 or 815 Grinder	P/N _____ (A)
1 Control Panel/Alarm System	P/N _____ (B)
1 Piggyback Pump Switch	P/N _____ (C)
1 Control Switch (if required)	P/N _____ (C)
1 Junction Box (if required)	P/N _____ (D)
1 Package Basin Assembly	P/N _____ (E)

# FIELD MOUNT SYSTEMS

## SIMPLEX

### REQ.

1 810 or 815 Grinder	P/N _____ (A)
1 Control Panel / Alarm System	P/N _____ (B)
1 Piggyback Pump Switch	P/N _____ (C)
1 Control Switch (if required)	P/N _____ (C)
1 Weight for Alarm Float (if required)	P/N _____ (C)
1 Junction Box (Optional)	P/N _____ (D)
1 Optional Accessories	P/N _____ (F)
	P/N _____ (F)
	P/N _____ (F)



SK2533

**"922" Packaged Systems**  
 Refer to FM2370 for Packaged Fiberglass or Poly-ribbed Basin Assemblies for the models 810 and 815.

Manufacturers of... *"QUALITY PUMPS SINCE 1939"*